



O'Shannessy's
QUALITY TOURS

RED CENTRE & THE TOP END

Melbourne To Darwin



17 DAY FULLY INCLUSIVE TOUR

15th June to 1st July, 2026

RED CENTRE & THE TOP END *Melbourne to Darwin*

MONDAY 15TH JUNE TO WEDNESDAY 1ST JULY, 2026

Australia's fiery Red Centre is the spiritual heartland of the Outback. It is a living breathing cultural landscape as old as time, with fascinating geological landforms, pockets of lush growth around its many watering holes and an abundance of unique wildlife. Marvel at the magnificence and ever changing colours of Uluru and be enchanted by the soaring rock domes of Kata Tjuta, 500 million years in the making.

TOUR HIGHLIGHTS

- Burra
- Woomera
- Coober Pedy tour
- Kan̄ku - Breakaways Conservation Park
- Uluru - Kata Tjuta National Park
- The Field of Light Exhibition
- Alice Springs Sightseeing Tour
- School of the Air
- Royal Flying Doctor Service
- Western MacDonnell Ranges
- Old Telegraph Station
- Devils Marbles
- Daly Waters
- Warradjun Cultural Centre
- Nitmiluk National Park
- Katherine Hot Springs
- Kakadu National Park
- Nourlangie Rock
- Darwin Sightseeing
- Litchfield National Park

FLIGHT

- Darwin to Melbourne

MULTIPLE NIGHT STAYS

- 2 nights in Coober Pedy, Yulara and Katherine
- 3 nights in Alice Springs and Darwin

CRUISES

- Katherine Gorge Cruise
- Yellow Water Sunset Cruise
- Adelaide River Jumping Croc Cruise
- Darwin Sunset Cruise



COACH



FLIGHT



BOAT



SMALL GRP

As a thank you for travelling with O'Shannessy's Quality Tours, you will automatically receive a saving on the total tour price for your second and subsequent tours.

O'Shannessy's Quality Tours will match single travellers who wish to twin share with another single traveller of the same gender. However, if this is not possible, you will be required to pay the Single Room Supplement.

If you are willing to twin share but are a smoker, have a CPAP machine or snore, you will need to pay a single supplement for a sole use room.

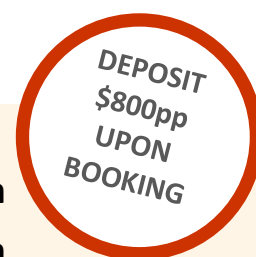


TOUR INCLUSIONS

- **Complimentary Chauffeur Driven Transfers.** Victorian passengers from Greater Melbourne, Bendigo, Torquay, Ballarat, Geelong, the Bellarine and Mornington Peninsulas, Phillip Island and selected areas of Gippsland will be picked up and returned home in a private chauffeured vehicle by one of our professional drivers. For passengers not within this pick up zone, or our interstate passengers, a quote can be provided for home pickup in extended areas.
- **Luxury Touring Coaches.** Our full size, 3 axle luxury coaches have only 32-36 passenger seats allowing you even more personal space and extra leg room. Our coaches are fitted with comfortable reclining seats with aisle arm rests, foot rests, seat belts, panoramic windows with blinds, refrigerator for passenger use, restroom, climate control air conditioning and Road Cam monitors which display the road ahead in real time. Each coach has a second door for easier entry and exit and touchless hand sanitizer dispensers at each entry to help keep everyone safe. Our coaches have full air suspension delivering a smooth and quiet ride which also allows us to lower the coach closer to the ground, making boarding and disembarking even easier.
- **Flight.** Economy flight from Darwin to Melbourne.
- **Tour Directors.** Dedicated O'Shannessy's Quality Tours coach crew (tour directors) on board to ensure your travel experience is memorable.
- **Best Available Quality Accommodation.** Ensuite motel accommodation each night.
- **Attractions.** All tours and interest venues as per itinerary.
- **Meals.** All full cooked breakfasts, morning teas and lunches most days, and two course restaurant dinners daily. Five lunches at your own expense as per itinerary.
- **No Hidden Extras.** O'Shannessy's Quality Tours are fully inclusive.

TOUR COSTS

Twin Share Room First Tour:	\$11,395 per person
Twin Share Room Repeat Traveller 2 - 10 Tours:	\$11,295 per person
Twin Share Room Repeat Traveller 11 - 20 Tours:	\$11,245 per person
Twin Share Room Repeat Traveller 21+ Tours:	\$11,195 per person
Single Room Supplement:	\$ 2,395 per person





DAY 1

Monday 15th June, 2026

MELBOURNE TO MILDURA

Welcome to our tour through the fabulous **Central Australia and Top End**. With chauffeured pickup from home, we are transferred to meet our **O'Shannessy's Quality Tours** coach and crew. We stop enroute for morning tea before continuing to Donald for lunch. This afternoon, we cross the **Wimmera Plains** and travel through the **Victorian Mallee** to **Mildura** for our first night away.

OVERNIGHT: Best Western Chaffey International Motor Inn, MILDURA ★★☆☆★

DAY 2

Tuesday 16th June, 2026

RIVERLAND TO PORT AUGUSTA

Today we drive along the **Riverland** from the **Sunraysia** to **Renmark** in South Australia to **Morgan**, once a very busy maritime port. Leaving the **Murray**, we head for the **Southern Flinders Ranges** calling at historic **Burra** (classified by the National Trust). This afternoon we take the scenic drive through the **North Mount Lofty Ranges** to **Port Augusta**.

OVERNIGHT: Standpipe Golf Motor Inn, PORT AUGUSTA ★★☆☆★

DAY 3

Wednesday 17th June, 2026

PORT AUGUSTA - WOOMERA - COOBER PEDY

We start our journey north on the Stuart Highway to Pimba, before detouring to **Woomera**. Until 1982, Woomera was a prohibited area for travellers. These days, we are welcomed with an interesting Visitors Centre. The town was built by the British and Australian Governments as the headquarters for the **Maralinga** and **Emu Field** - nuclear rocket and atomic bomb test sites. After lunch, we rejoin the Stuart Highway and continue to **Coober Pedy** to check into our two night's accommodation.

OVERNIGHT: Desert Cave Hotel, COOBER PEDY ★★☆☆★

EXPLORING COOBER PEDY

We start the day with an opal-cutting demonstration and town tour, including an inspection of an opal mine, an underground house or “dug out” and a church. Did you know that the **Coober Pedy Golf Course** is the only golf course in the world with reciprocal rights to St Andrews in Scotland??!! We'll also have time for some retail therapy for anyone interested in opals. We have time to purchase lunch before we head to the nearby “**Kanku - Breakaways Conservation Park**” - a stunning natural landscape that has featured in a number of movies such as Mad Max 3, Priscilla Queen of the Desert and Ground Zero. Returning to town, we have some free time to relax, or perhaps some more opal shopping.

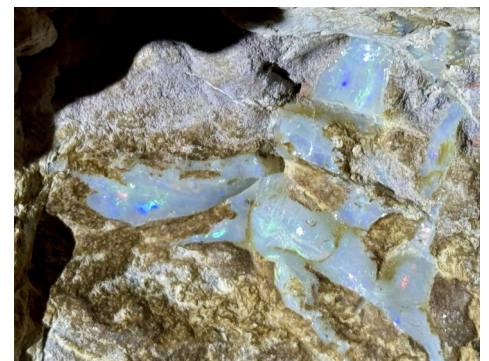
Lunch at own expense and arrangement

OVERNIGHT: Desert Cave Hotel, COOBER PEDY ★★☆☆☆

COOBER PEDY TO YULARA

An early start for a travel day as we head for the border and into the **Northern Territory**. At **Erlidunda**, we head west onto **Uluru Kata Tjuta National Park**. There is an air of excitement in the coach as we are drawn closer to **Uluru**. Upon our arrival, we head straight to **Sunset Strip** to enjoy the spectacle of the changing colour of Uluru as the sun sets behind us. We now make our way to the resort to check in. Dinner will be a little later this evening.

OVERNIGHT: Voyages Desert Gardens Hotel, YULARA ★★☆☆☆





DAY 6

Saturday 20th June, 2026

ULURU AND KATA TJUTA

We have a magical day in store. **Uluru**, previously known as **Ayers Rock**, is located in the World Heritage Listed **Uluru-Kata Tjuta National Park**. It rises 348 metres from the desert floor and has a girth of 9.4kms. It's the world's most famous monolith with at least two thirds of the Rock lying beneath the surface. We spend some time at the Cultural Centre and take a drive around the Rock, stopping for photo opportunities. Lunch today is available from one of a number of restaurants and cafes in the Yulara Shopping Village. Early afternoon we visit the nearby **Olgas**, called by the Aboriginal people **Kata Tjuta**. We'll stop at the viewing platform, then further on, stop for a photo opportunity and a short walk. We return to the resort, but our day isn't over yet as we are in for a special treat – a unique outback experience. We will be seeing internationally acclaimed artist Bruce Munro's once in a lifetime staging of **The Field of Light**. This is the biggest Field of Light exhibition to date and it is held at Uluru. We have the chance to wander through 50,000 slender stems crowned with frosted-glass spheres that will bloom as darkness falls over Australia's spiritual heartland. This display is for a limited time, making the experience that much more memorable. After a fantastic day, we return to the resort for a later dinner.

Lunch at own expense and arrangement

OVERNIGHT: Voyages Desert Gardens Hotel, YULARA ★★☆☆☆

DAY 7

Sunday 21st June, 2026

YULARA TO ALICE SPRINGS

This morning you have the opportunity to view **Uluru**, **Kata Tjuta** and **Yulara** from the air. We reserve a number of seats for an unforgettable 40 minute **Scenic Flight** of the area. This flight is at patrons own expense and is highly recommended. After breakfast we say farewell to Uluru and rejoin the Lasseter Highway, through sand dune country, past **Mt Connor** to **Erlunda** where we stop for our lunch break. This afternoon, we head north crossing the **Finke River** and enjoy the ever-changing scenery as we near **Alice Springs**.

OVERNIGHT: Crowne Plaza Alice Springs Lasseters, ALICE SPRINGS ★★☆☆☆

EXPLORING ALICE SPRINGS

Welcome to “**The Alice**”! We begin today with a view of Alice Springs from **Anzac Hill**. From here we can see the **East** and **West MacDonnell Ranges**, the Stuart Highway, the **Todd River**, the Ghan Line and the prominent city buildings. We take a virtual journey into 'The World's Largest Classroom' which will leave us enlightened and inspired as we visit the **School of the Air**. The film and guide presentations reveal stories about the school and its students, sharing a distinctive history, outback lifestyle and world-renowned innovations of this uniquely Australian school. Next we visit the **Royal Flying Doctor Service** (RFDS). We hear the incredible history of one of the largest and most comprehensive aeromedical organisations in the world. Using the latest aviation, medical and communications technology, the RFDS delivers extensive primary health care and 24-hour emergency service to those who live, work and travel throughout Australia. We enjoy some free time this afternoon to relax or go for a swim. We have a special evening planned tonight. Just 15 minutes out of Alice is **Earth Sanctuary** - a World Nature Centre at **Quandong Homestead**. We will enjoy a mouth-watering bush BBQ with music and entertainment and experience the spirit of the outback through stories of the aboriginal dreamtime. We will even learn how to cook a swagman's damper! After dinner we can relax around the camp fire before heading back to the hotel.

OVERNIGHT: Crowne Plaza Alice Springs Lasseters, ALICE SPRINGS ★★★★★

WESTERN MACDONNELL RANGES

We have a great day in store as we explore the majestic **Western MacDonnell Ranges**. The natural beauty in this area is outstanding! Our first stop is at the monument of the **Reverend John Flynn**, founder of the Royal Flying Doctor Service. We continue the scenic drive to **Standley Chasm** with its towering walls; this is also where we'll enjoy our morning break. Next stop is beautiful **Simpsons Gap** where we can stretch our legs. We head back to town to visit the **Old Telegraph Station** for a tour and lunch. The Alice Springs Telegraph Station Historical Reserve marks the original site of the first European settlement in Alice Springs. It was established in 1871 to relay messages between Darwin and Adelaide along Australia's Overland Telegraph Line. This not only connected Australia's population centre's with the north of the country, but it also connected Australia up with the undersea telegraph network of the British Empire.

OVERNIGHT: Crowne Plaza Alice Springs Lasseters, ALICE SPRINGS ★★★★★





DAY 10

Wednesday 24th June, 2026

ALICE SPRINGS TO TENNANT CREEK

This morning, we farewell Alice Springs and travel north on the Stuart Highway. We stop briefly at **Aileron** to see the “Anmatjere Man” standing proudly on a hill, overlooking his country, spear in hand., and another sculpture of a woman, child and a lizard. We continue past **Ti Tree Creek** and historic **Barrow Creek**. Later this afternoon we spend some time at the “**Devils Marbles**” before arriving into **Tennant Creek**.

OVERNIGHT: Bluestone Motor Inn, TENNANT CREEK ★★☆☆☆

DAY 11

Thursday 25th June, 2026

DALY WATERS - KATHERINE

Today we will be travelling to what is termed the “Top End”. We lunch at **Daly Waters Pub**, a well-known spot for many of the air personnel who served in the Pacific during World War II. This afternoon, our journey takes us to **Katherine** where we settle into our next two nights accommodation.

OVERNIGHT: Knotts Crossing Resort, KATHERINE ★★☆☆☆

KATHERINE GORGE

This morning, we make our way to **Katherine Gorge**. Within the **Nitmiluk National Park** are 13 separate gorges of the extended system through which Katherine River flows. Sheer walls of sandstone dotted with ancient Aboriginal rock art surround the crystal waters of the **Katherine River** where freshwater crocodiles can be seen along the banks with flowering orchids and lilies. After our cruise, we can look through the **Visitors and Interpretive Centre**. Early afternoon, we visit the **Katherine Hot Springs**. Sit back and relax in the beautiful thermal pools. The bubbling natural spring has a constant temperature of approximately 25-30 degrees Celsius. Used by many as a way of healing, we can let our muscles unwind after a morning of cruising!! Back at the resort, we have the rest of the day free to relax and maybe take a swim in the pool.

Lunch at own expense and arrangement

OVERNIGHT: Knotts Crossing Resort, KATHERINE ★★☆☆★

KAKADU - YELLOW WATERS CRUISE

Today we are off to Kakadu National Park and **Deb Frosh - winner of the 2024 Tourism Brolga Award and National Tourism Award** - and an **accredited Kakadu guide** will join us from here to Darwin. She will offer a wonderfully in-depth insight into the lifestyle, culture and landscape of this land. We'll travel to the old gold-mining town of **Pine Creek** before joining the Kakadu Highway into Kakadu National Park. We stop at the **Warradjan Cultural Centre** where we can explore various exhibits that showcase traditional stories, hunting techniques, and the natural history of the park. Close by is **Cooinda**; here we enjoy a cold luncheon, then have some free time to relax. We also have the opportunity to take an optional scenic flight over the incredible wetlands of **Kakadu National Park** (*own expense*) before, late afternoon boarding our magical **Yellow Water Sunset Cruise**. Nowhere else will we see such a concentration of so many species of diverse wildlife than here, including Brolgas, Egrets, Jabiru and hopefully Crocs!

OVERNIGHT: Cooinda Lodge Kakadu, KAKADU ★★☆☆★





DAY 14

Sunday 28th June, 2026

KAKADU TO DARWIN

Our touring this morning includes **Nourlangie Rock**. There are a number of shelters in amongst this large outcrop. The shelters contain amazing paintings that represent the Aboriginal Dreaming, with depictions of Namandi spirits, both male and female figures and one with six fingers on each hand. Pigments are mostly of yellow, white and red ochre, with red ochre being used as a chalk to draw on the rock surface in some places. Deb will interpret the aboriginal art and it will be a most interesting morning. We stop for lunch on the way to **Adelaide River** where we join the **Jumping Croc Cruise** for some close encounters with the resident saltwater crocodiles! We then drive into Darwin, farewell Deb, thanking her for the amazing knowledge she has pass on to us, before settling into our accommodation for the next three nights.

OVERNIGHT: Doubletree by Hilton Esplanade, DARWIN ★★★★★

DAY 15

Monday 29th June, 2026

EXPLORING DARWIN

Today we take in the sights of Darwin. Many people aren't aware of the importance of Darwin during **World War II** so we'll look at the city as it is today and also learn about the involvement and history of the bombings of Darwin. The present city centre was established in 1869 and contains many of its remaining historic buildings such as the Old Court House and Government House. We see the new Parliament House built on the site of the Darwin Post Office bombed during the war, the port area plus the many other fascinating sights of Australia's northern gateway. Our tour concludes at **Stokes Hill Wharf** where there are a lot of options for lunch. This afternoon, we visit the **Flying Doctor Service and Bombing of Darwin tourist facility** - two iconic stories in the one iconic location! Returning to our hotel, we have the rest of the day to relax and enjoy the resort facilities – perhaps a dip in the pool or some retail therapy. Our day isn't over yet though! We enjoy dinner this evening while **cruising on Darwin Harbour**. It is a great way to see Darwin from the water.

Lunch at own expense and arrangement

OVERNIGHT: Doubletree by Hilton Esplanade, DARWIN ★★★★★

LITCHFIELD NATIONAL PARK

We spend the day touring **Litchfield National Park**. This National Park is very understated and offers an unforgettable day out. We travel through **Batchelor** to **Florence Falls** and admire the **Magnetic** and **Cathedral Termite Mounds**, some standing 16 feet (5 metres) high. We enjoy lunch at the Litchfield Café and have some free time at nearby **Wangi Falls**. This is a most relaxing area, perhaps take a swim or a walk. This evening, we will make our way to **Cullen Bay** for dinner together as we watch the sunset.

OVERNIGHT: Doubletree by Hilton Esplanade, DARWIN ★★☆☆☆

DARWIN TO MELBOURNE

After three wonderful nights in Darwin, it's time now to head for home. We'll transfer to Darwin Airport for the return flight to Melbourne. Upon arrival, our chauffeurs will be waiting to transport us home with many interesting stories to tell of our fantastic holiday in the Red Centre and Top End.

Lunch at own expense and arrangement / refreshments on flight



PAYMENT AND CANCELLATION POLICY

Receipt of payment of funds will be taken as acceptance of O'Shannessy's Quality Tours conditions of travel for this tour. Prices include GST and all taxes. Deposit is fully refundable until **61 days** prior to departure date. Balance due on invoice.

Cancellation within 60 days of tour departure date

No Refund

On or after tour date departure

No Refund

If a tour is cancelled for any reason by O'Shannessy's Quality Tours before the departure date, all passengers will be offered the option of transferring to another tour of their choice, hold the funds in trust for a future tour or a full refund. There is no time limit as to when this must be used. If a lockdown is implemented while a tour is in progress, our first priority is the safety and wellbeing of our passengers and ensuring that we get each and every one of them home safely, and therefore we treat every situation individually. The Australian Government (see www.smarttraveller.gov.au) recommends all travellers no matter where you are going, obtain comprehensive travel insurance from a reputable provider. It may enable you to claim back the cost of your tour if you are unable to travel or have to cancel at late notice. Always read the PDS provided, to ensure the cover meets all of your needs. We are able to provide travel insurance through Nib Insurance. If you would like a quote please call our office toll free on 1800 354 352.

CONDITIONS OF TRAVEL

The terms and conditions form the basis of the contract between You and O'Shannessy's Quality Tours (O'Shannessy's Quality Tours "We", "Us", or "Our" contract). It is important that You read the complete list of terms and conditions carefully and that you understand your rights and obligations. This is NOT a complete list of O'Shannessy's Quality Tours Conditions of Travel. A complete list will be provided upon invoice, alternatively they are available upon request via phone, mail, email or on our website. By agreeing to participate in a tour arranged by Us, You are deemed to have accepted these terms and conditions in full.

O'Shannessy's Quality Tours reserves the right to make any alterations to this itinerary as necessary. O'Shannessy's Quality Tours will endeavour to notify you of any significant changes prior to your



Toll Free: 1800 354 352
O'Shannessy's Quality Tours



www.oshannessys.com.au

2121 Point Nepean Road, Rye Vic 3941
Copyright © O'Shannessy's Quality Tours

enquiries@oshannessys.com.au