



O'Shannessy's
QUALITY TOURS

LIGHTNING RIDGE

Expedition

LUNATIC
LŌŌKOUT



8 DAY FULLY INCLUSIVE TOUR

24th May to 31st May, 2026

LIGHTNING RIDGE *Expedition*

SUNDAY 24TH MAY TO SUNDAY 31ST MAY, 2026

There is nowhere in Australia quite like Lightning Ridge.

It is a compelling combination of rural sophistication and the wildly eccentric.

There is a moonscape of mullock heaps,
under which hundreds of obsessed miners toil and dig in search of the black opals
which have made the town famous, juxtaposed against the cosmopolitan Artesian
Bore Baths. Many who come to "The Ridge" for just a short time, end up staying
a life-time without being able to pinpoint the exact reason.

TOUR HIGHLIGHTS

- The Big Strawberry
- Griffith Town Tour
- Kidman Way
- Great Cobar Outback Heritage Centre
- Back of Bourke Exhibition Centre
- Lightning Ridge Guided Tour
- Chambers of the Black Hand
- Opal Mine Adventure
- Cactus Farm
- Amigos Castle
- The Grawin
- John Murray Art Gallery
- Dubbo
- Taronga Western Plains Zoo
- CSIRO Radio Telescope "The Dish"
- Junee Licorice and Chocolate Factory
- Benalla Street Art

MULTIPLE NIGHT STAY

- 3 nights in Lightning Ridge



COACH



SMALL GRP

As a thank you for travelling with O'Shannessy's Quality Tours, you will automatically receive a saving on the total tour price for your second and subsequent tours.

O'Shannessy's Quality Tours will match single travellers who wish to twin share with another single traveller of the same gender. However, if this is not possible, in most cases you shall be provided with single accommodation at the twin share fare (no additional cost).

If you are willing to twin share but are a smoker, have a CPAP machine or snore, you will need to pay a single supplement for a sole use room.



TOUR INCLUSIONS

- **Complimentary Chauffeur Driven Transfers.** Victorian passengers from Greater Melbourne, Bendigo, Torquay, Ballarat, Geelong, the Bellarine and Mornington Peninsulas, Phillip Island and selected areas of Gippsland will be picked up and returned home in a private chauffeured vehicle by one of our professional drivers. For passengers not within this pick up zone, or our interstate passengers, a quote can be provided for home pickup in extended areas.
- **Luxury Touring Coaches.** Our full size, 3 axle luxury coaches have only 32-36 passenger seats allowing you even more personal space and extra leg room. Our coaches are fitted with comfortable reclining seats with aisle arm rests, foot rests, seat belts, panoramic windows with blinds, refrigerator for passenger use, restroom, climate control air conditioning and Road Cam monitors which display the road ahead in real time. Each coach has a second door for easier entry and exit and touchless hand sanitizer dispensers at each entry to help keep everyone safe. Our coaches have full air suspension delivering a smooth and quiet ride which also allows us to lower the coach closer to the ground, making boarding and disembarking even easier.
- **Tour Directors.** Dedicated O'Shannessy's Quality Tours coach crew (tour directors) on board to ensure your travel experience is memorable.
- **Best Available Quality Accommodation.** Ensuite motel accommodation each night.
- **Attractions.** All tours and interest venues as per itinerary.
- **Meals.** All full cooked breakfasts, morning teas most days, all lunches and two course restaurant dinners daily.
- **No Hidden Extras.** O'Shannessy's Quality Tours are fully inclusive.

TOUR COSTS

Twin Share Room First Tour:	\$4,295 per person
Twin Share Room Repeat Traveller 2 - 10 Tours:	\$4,245 per person
Twin Share Room Repeat Traveller 11 - 20 Tours:	\$4,220 per person
Twin Share Room Repeat Traveller 21+ Tours:	\$4,195 per person
Single Room Supplement:	\$ 525 per person





DAY 1

Sunday 24th May, 2026

MELBOURNE TO GRIFFITH

Welcome to our tour to **Lightning Ridge**. With chauffeured pickup from home, we are transferred to meet our **O'Shannessy's Quality Tours** luxury coach and crew. From Melbourne we make our way north to **The Big Strawberry** where we stop for lunch. This afternoon we cross into **New South Wales** and through to **Griffith**. Row upon row, farm upon farm of oranges, grapes, peaches and other delights boldly announce we have entered one of Australia's most magnificent food and wine producing areas.

OVERNIGHT: Kidman Wayside Inn, GRIFFITH ★★ ★★ ★

DAY 2

Monday 25th May, 2026

GRIFFITH TO COBAR

This morning we visit the **Griffith Visitors Centre** where we collect our local expert. Their tour will give us a good introduction to the area and what occurs over a 12 month period, as well as the history of the Griffith area. On the road again, we follow the famous **Kidman Way**. We travel through quite a few little outback towns like **Goolgowi** - the "*Crossroads to the Outback*". It's a relatively new town with settlement occurring in the 1920's when the Mid-Western Highway and the railway encouraged development. Today the town provides a welcome, restful stop for travellers. We continue on to **Hillston**; situated on the banks of the Lachlan River, the town provides a wealth of water orientated activities. The next stop is **Mount Hope** and this is where we enjoy our lunch. Copper Ore was discovered here in 1873 on Coan Downs by a shepherd named MacDowall. This discovery led to the opening of the Grade Central, Mount Allen and Mount Solitary Mines. Gold was also mined here. Mount Hope now has a population of about 20, whereas in its heyday it boasted 3,000. Mid-afternoon we arrive in Cobar and visit the **Great Cobar Outback Heritage Centre** incorporating the **Regional Museum**. The Great Cobar Heritage Centre is the former Administration Building of the Great Cobar Copper Mine. The centre captures the essence of Cobar, with an amazing collection of artefacts revealing the extraordinary and diverse range of local heritage. We then finish our days touring and check into our motel. Dinner is at the Empire Hotel this evening.

OVERNIGHT: Copper City Motel, COBAR ★★ ★★ ★

COBAR TO LIGHTNING RIDGE

We farewell our hosts and head to **Bourke**, situated on the banks of the Darling River. There are some wonderful historic buildings here including the Carriers Arms Inn, frequented by Henry Lawson in the early 1890s and mentioned in some of his stories. While we are here, we visit the **Back of Bourke Exhibition Centre** that will bring to life the story of Outback New South Wales and of course the Back O' Bourke. In true country style, we enjoy lunch at the pub – **The Port of Bourke Hotel** to be exact. **Lightning Ridge** is our destination and we aim to get there late afternoon. This is a three night stop so unpack and get comfortable.

OVERNIGHT: Wallangulla Motel, LIGHTNING RIDGE ★★★★★

LIGHTNING RIDGE

This morning we are in for an intriguing experience. Visit the **Chambers of the Black Hand**, an underground gallery with works carved and painted into the walls by the artist, Ron Canlin. There is no subject off limits here as Ron constantly carves his new works. Next, we experience the atmosphere of an underground mine at **Opal Mine Adventures**. Here we'll learn about opal mining through a video presentation and visit the showroom to view the opals that came from the mine in this area. Then popping into the **Cactus Farm**, you'll be captivated by the beautifully displayed and numerous varieties of cacti. We are then joined by a **local guide** who will lead us on a sightseeing tour of this fascinating outback town before uncovering **Amigos Castle**, a huge Italian Style Castle built by one man. Later, we'll return to our hotel and refresh before dinner.

OVERNIGHT: Wallangulla Motel, LIGHTNING RIDGE ★★★★★





DAY 5

Thursday 28th May, 2026

THE GRAWIN

With our local expert joining us again we head out to **The Grawin**, a group of Opal Fields where the largest opal 'Light of the World' was found. Be treated as a local at the welcoming **Glengarry Hilton**, a unique place for our lunch and no doubt a great place for the Australian larrikin. After our tucker, we head back to 'The Ridge' with enough time to take a look at the **John Murray Art Gallery**. Here John's kept busy adding to his outside mural, affectionately named 'Billygoat Lane'.

OVERNIGHT: Wallangulla Motel, LIGHTNING RIDGE ★★★★★

DAY 6

Friday 29th May, 2026

LIGHTNING RIDGE TO DUBBO

Farewell to Lightning Ridge as we travel south through **Coonamble** and **Gilgandra** to **Dubbo**. We arrive late morning and have some free time to stretch our legs and have some lunch. Dubbo is one of Australia's largest cities - in population terms it is ranked in the top 40. Unlike many other rural centers throughout Australia, Dubbo has experienced quite dramatic growth over the past decade and now offers all the sophistication of a capital city, without sacrificing the benefits of country life. It is situated in the geographical heart of NSW and has a history that goes back more than 180 years. Dubbo is also home to the **Taronga Western Plains Zoo**. The zoo is one of the largest in the world, covering some 300 hectares, where animals live in large natural areas behaving very much as they would in the wild. We are joined by a local guide who will board our coach and provide us with an insight into the animals and zoo (with plenty of stops for explanations and photos). After our tour, we have some free time to revisit the animals. We then check into our accommodation.

OVERNIGHT: Quality Inn Dubbo International, DUBBO ★★★★★

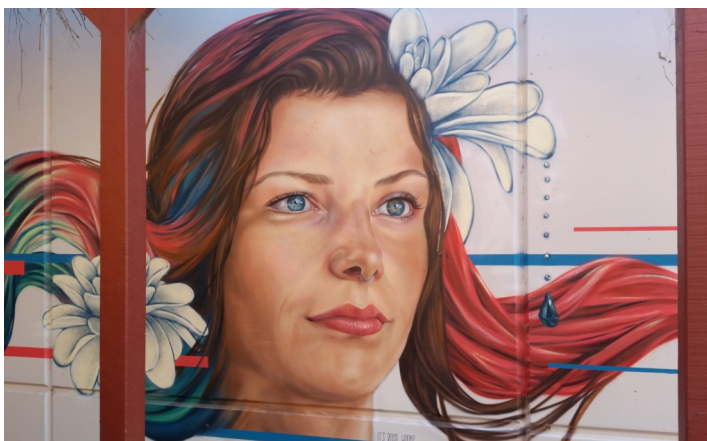
DUBBO TO WAGGA WAGGA

We have a slightly earlier start this morning; from Dubbo we take the Newell Highway through Peake Hill. Just north of Parkes, we visit the **CSIRO Radio Telescope**, also called “**The Dish**”. The visitors centre features many hands on displays and exhibits and our visit also includes an audio-visual experience. Our lunch venue today is in **Grenfell** and our afternoon journey takes us through **Young** and **Cootamundra**. We stop in **Junee** for a tour of the **Junee Licorice and Chocolate Factory** before the last leg of today’s journey which takes us to **Wagga Wagga**.

OVERNIGHT: Mercure Wagga Wagga, WAGGA WAGGA ★★ ★★ ★

WAGGA WAGGA TO MELBOURNE

Unfortunately, our holiday is coming to an end and today is mostly a travel day so sit back and enjoy the ride! We stop in **Albury** for our morning break then drive to **Benalla**. Here, we’ll take a drive to see some of the **Street Art** – artists from around the world were brought together to paint murals on bare walls, some over three stories high. After lunch, we continue on to Melbourne. As always, our chauffeurs await our arrival to transfer us safely home with memories of a sensational Lightning Ridge tour – all part of the **O’Shannessy’s Quality Tours** superior service.



PAYMENT AND CANCELLATION POLICY

Receipt of payment of funds will be taken as acceptance of O'Shannessy's Quality Tours conditions of travel for this tour. Prices include GST and all taxes. Deposit is fully refundable until **46 days** prior to departure date. Balance due on invoice.

Cancellation 45 to 31 days before tour departure date

20% Refund of Tour Cost

Cancellation within 30 days of tour departure date

No Refund

On or after tour date departure

No Refund

If a tour is cancelled for any reason by O'Shannessy's Quality Tours before the departure date, all passengers will be offered the option of transferring to another tour of their choice, hold the funds in trust for a future tour or a full refund. There is no time limit as to when this must be used. If a lockdown is implemented while a tour is in progress, our first priority is the safety and wellbeing of our passengers and ensuring that we get each and every one of them home safely, and therefore we treat every situation individually. The Australian Government (see www.smarttraveller.gov.au) recommends all travellers no matter where you are going, obtain comprehensive travel insurance from a reputable provider. It may enable you to claim back the cost of your tour if you are unable to travel or have to cancel at late notice. Always read the PDS provided, to ensure the cover meets all of your needs. We are able to provide travel insurance through Nib Insurance. If you would like a quote please call our office toll free on 1800 354 352.

CONDITIONS OF TRAVEL

The terms and conditions form the basis of the contract between You and O'Shannessy's Quality Tours (O'Shannessy's Quality Tours "We", "Us", or "Our" contract). It is important that You read the complete list of terms and conditions carefully and that you understand your rights and obligations. This is NOT a complete list of O'Shannessy's Quality Tours Conditions of Travel. A complete list will be provided upon invoice, alternatively they are available upon request via phone, mail, email or on our website. By agreeing to participate in a tour arranged by Us, You are deemed to have accepted these terms and conditions in full.

O'Shannessy's Quality Tours reserves the right to make any alterations to this itinerary as necessary.

O'Shannessy's Quality Tours will endeavour to notify you of any significant changes prior to your departure.



Toll Free: 1800 354 352
O'Shannessy's Quality Tours



www.oshannessys.com.au

2121 Point Nepean Road, Rye Vic 3941

enquiries@oshannessys.com

Copyright © O'Shannessy's Quality Tours