



O'Shannessy's
QUALITY TOURS

CANBERRA FLORIADE

Festival Tour 1



6 DAY FULLY INCLUSIVE TOUR

13th September to 18th September, 2026

CANBERRA FLORIADE *Festival, Tour 1*

SUNDAY 13TH SEPTEMBER TO FRIDAY 18TH SEPTEMBER, 2026

Experience the rainbow of colour from the one million blooms that make up Floriade.

This is the largest flower festival in the Southern Hemisphere and includes horticultural workshops, music and entertainment.

Explore the Australian War Memorial, a world class museum and shrine; Lake Burley Griffin, the masterful centrepiece of Canberra; and delight in the art and world class exhibitions at the National Gallery of Australia.

TOUR HIGHLIGHTS

- Lakes Entrance
- Cooma
- Charles Davis Gallery
- Canberra
- Mount Ainslie Lookout
- Museum of Australian Democracy
- New Parliament House
- Australian War Memorial
- Floriade Festival
- National Gallery
- Tulip Top Gardens
- Cockington Green
- Albury Botanic Gardens
- Benalla

MULTIPLE NIGHT STAY

- 3 nights in Canberra



COACH

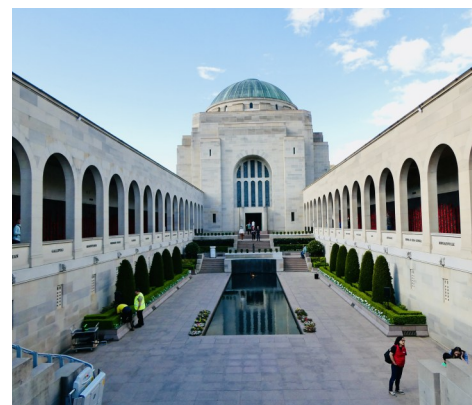


SMALL GRP

As a thank you for travelling with O'Shannessy's Quality Tours, you will automatically receive a saving on the total tour price for your second and subsequent tours.

O'Shannessy's Quality Tours will match single travellers who wish to twin share with another single traveller of the same gender. However, if this is not possible, in most cases you shall be provided with single accommodation at the twin share fare (no additional cost).

If you are willing to twin share but are a smoker, have a CPAP machine or snore, you will need to pay a single supplement for a sole use room.



TOUR INCLUSIONS

- **Complimentary Chauffeur Driven Transfers.** Victorian passengers from Greater Melbourne, Bendigo, Torquay, Ballarat, Geelong, the Bellarine and Mornington Peninsulas, Phillip Island and selected areas of Gippsland will be picked up and returned home in a private chauffeured vehicle by one of our professional drivers. For passengers not within this pick up zone, or our interstate passengers, a quote can be provided for home pickup in extended areas.
- **Luxury Touring Coaches.** Our full size, 3 axle luxury coaches have only 32-36 passenger seats allowing you even more personal space and extra leg room. Our coaches are fitted with comfortable reclining seats with aisle arm rests, foot rests, seat belts, panoramic windows with blinds, refrigerator for passenger use, restroom, climate control air conditioning and Road Cam monitors which display the road ahead in real time. Each coach has a second door for easier entry and exit and touchless hand sanitizer dispensers at each entry to help keep everyone safe. Our coaches have full air suspension delivering a smooth and quiet ride which also allows us to lower the coach closer to the ground, making boarding and disembarking even easier.
- **Tour Directors.** Dedicated O'Shannessy's Quality Tours coach crew (tour directors) on board to ensure your travel experience is memorable.
- **Best Available Quality Accommodation.** Ensuite motel accommodation each night.
- **Attractions.** All tours and interest venues as per itinerary.
- **Meals.** All full cooked breakfasts, morning teas and lunches most days, and two course restaurant dinners daily. Two lunches at your own expense as per itinerary.
- **No Hidden Extras.** O'Shannessy's Quality Tours are fully inclusive.

TOUR COSTS

Twin Share Room First Tour:	\$3,295 per person
Twin Share Room Repeat Traveller 2 - 10 Tours:	\$3,245 per person
Twin Share Room Repeat Traveller 11 - 20 Tours:	\$3,220 per person
Twin Share Room Repeat Traveller 21+ Tours:	\$3,195 per person
Single Room Supplement:	\$ 495 per person





DAY 1

Sunday 13th September, 2026

MELBOURNE TO LAKES ENTRANCE

Welcome to our tour to the spectacular **Canberra Floriade Festival**. With chauffeured pickup from home, we are transferred to meet our **O'Shannessy's Quality Tours** coach and crew. Our journey today has us travelling through the Latrobe Valley and across Gippsland. After a morning tea break to stretch our legs and take in the scenery, we continue to **Sale** for **lunch**. Our destination today is beautiful **Lakes Entrance** and we have plenty of time for a stroll along the Esplanade to inspect the nearby **WW1 Memorial Sculptures** – carved from the original Cypress trees planted as an Avenue of Honour for the servicemen that gave their life during World War 1. We check into our accommodation with a little time to relax before dinner.

OVERNIGHT: Bellevue on the Lakes, LAKES ENTRANCE ★★★★★

DAY 2

Monday 14th September, 2026

CANN RIVER - SNOWY MOUNTAINS - CANBERRA

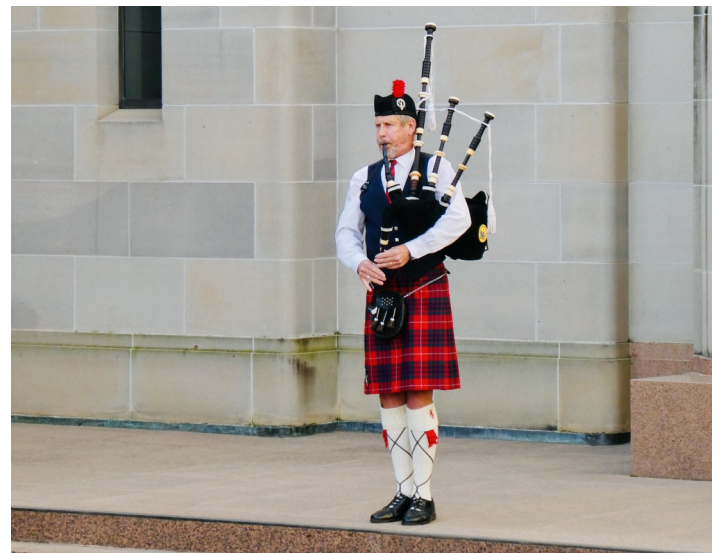
This morning we travel through Eastern Gippsland. We cross the Snowy River and take a drive through the little town of **Orbost** before our morning tea stop at **Cann River**. A scenic drive takes us north into NSW and to the Monaro Plain in the Snowy Mountains region. We enjoy an afternoon break in **Cooma**, set amongst rolling plains, legendary rivers and snow-capped peaks. Cooma is known as the capital of the Snowy Mountains and the administrative centre for the Snowy Mountains Scheme. We'll take a wander through the **Charles Davis Gallery** – home to the award-winning photographic work of Charles himself. We reach our accommodation in **Canberra** late afternoon with time to relax before dinner.

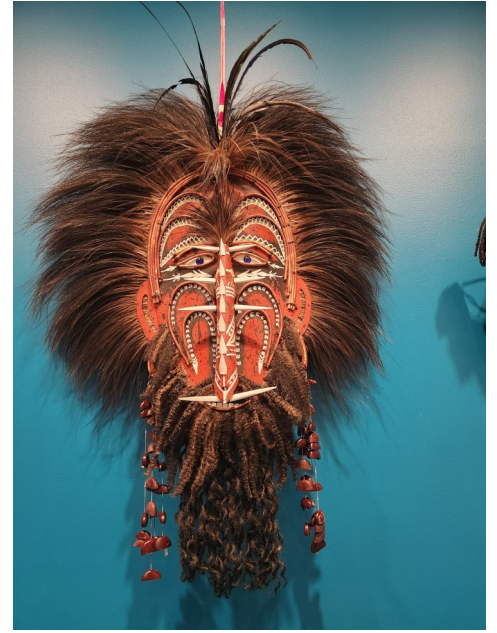
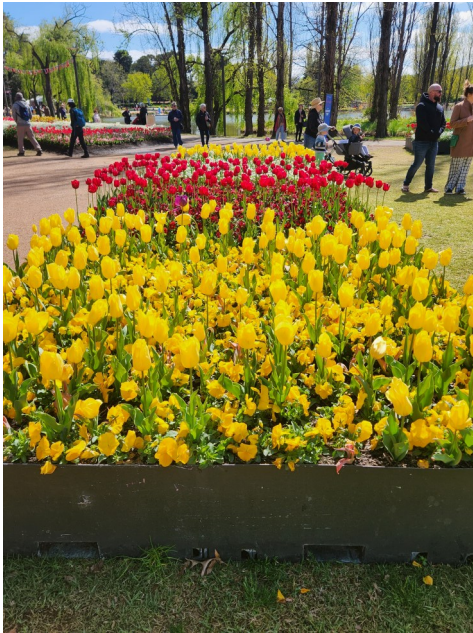
OVERNIGHT: Novotel Canberra, CANBERRA ★★★★★

CANBERRA SIGHTSEEING

This morning we get to know Canberra. We'll start our day with a drive up to **Mt Ainslie Lookout** where we can take in the spectacular views over Canberra and see how Walter Burley Griffin's vision for the city has been brought to life. We will learn of the International Embassies and High Commissions as we pass by in the coach. After our morning break, we'll visit the **Museum of Australian Democracy (Old Parliament House)**. Our tour will have us exploring the ideas, individuals and events of Australian democracy, in the very places where they occurred. We now head over to **New Parliament House** where we discover the must-see highlights of this iconic building. We're enjoying our time here so much we decide to stay on for a late **lunch** at the **Queen's Terrace Café**. The remainder of our day will be spent at the **Australian War Memorial**. Wander at your own pace through this sombre and uplifting memorial, unveiling the sacrifices made by the women and men who served in war. We stay on for the very moving **Last Post Ceremony** before returning to our hotel for dinner.

OVERNIGHT: Novotel Canberra, CANBERRA ★★★★★





DAY 4

Wednesday 16th September, 2026

CANBERRA FLORIADE

With a leisurely start we spend the morning at **Floriade** where **Commonwealth Park** on the edge of Lake Burley Griffin is ablaze with colour, beauty and vibrancy. Be inspired and get ideas from experts in the field, peruse the market stalls, catch a live music performance or simply explore the stunning garden bed displays – the choice is yours. We are free to enjoy lunch from one of the market stalls - there will be something on the menu for all taste buds! This afternoon is at leisure, or alternatively, we have time to visit the **National Gallery**, home to the most valuable collection of art in Australia. The national collection comprises over 155,000 works of art, including the world's largest collection of Aboriginal and Torres Strait Islander art. The significant collection represents the whole of Australian art, modern art worldwide, particularly from Europe and America, and art from across Asia and the Pacific. The collection includes some of the finest examples in Australia of French Impressionism, Dada and Surrealism, the Russian avant-garde, Abstract Expressionism, Pop Art, Minimalism and Conceptual Art.

Lunch at own expense and arrangement

OVERNIGHT: Novotel Canberra, CANBERRA ★★★★★

“...Commonwealth Park hosts the Floriade Festival. It features extensive displays of flowering bulbs with integrated sculptures and other artistic features...”

CANBERRA TO ALBURY

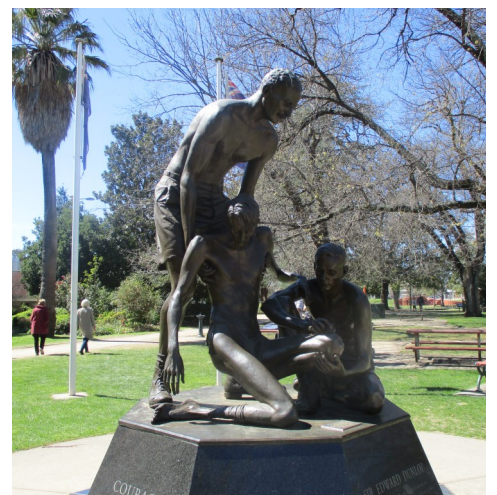
This morning, we make our way to the **Tulip Top Gardens**. The 10-acre garden of magnificent tulips, daffodils, and other spring flowers creates a spectacular display. Hundreds of blossom trees nestle between the flowers and provide a magic pathway to the cascading waterfall and watercourse with classical music wafting through the air in the hidden valley. Next, we travel to the famous world in miniature “**Cockington Green Gardens**”. Cockington Green is one of Canberra’s landmark attractions and offers visitors a unique experience. We will see a delightful display of meticulously crafted miniature buildings set within beautifully landscaped gardens. Farewelling our Nation’s capital, we travel down to **Albury** for our final evening together.

Lunch at own expense and arrangement

OVERNIGHT: Best Western Plus Hovell Tree Inn, ALBURY ★★★★★

ALBURY - BENALLA - MELBOURNE

Sadly, our tour is coming to an end! Taking our last opportunities to celebrate Spring today, we visit the **Albury Botanic Gardens**. Meeting our guide, we begin meandering under the towering trees that line the inspiring gardens, uncovering the impressive plant collections of both native and exotic origins. Arriving into **Benalla** we take time to enjoy the town’s wonderful display of roses. Strolling along the many pathways of beautiful roses at the Benalla Rose Garden - see how many you can identify before reading the labels! Pause at the Sir Weary Dunlop statue and take a moment to reflect his compassion and perseverance during his time as a prisoner of war on the Burma-Thailand railway. Our final lunch today will be at the **Benalla Golf Club**, before making the return to Melbourne to complete a wonderful tour. As always, our chauffeurs will be on hand to take us straight to our door – all part of the **O’Shannessy’s Quality Tours** superior service.



PAYMENT AND CANCELLATION POLICY

Receipt of payment of funds will be taken as acceptance of O'Shannessy's Quality Tours conditions of travel for this tour. Prices include GST and all taxes. Deposit is fully refundable until **46 days** prior to departure date. Balance due on invoice.

Cancellation 45 to 31 days before tour departure date
Cancellation within 30 days of tour departure date
On or after tour date departure

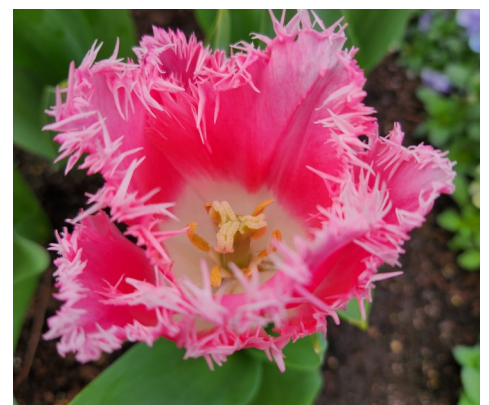
20% Refund of Tour Cost
No Refund
No Refund

If a tour is cancelled for any reason by O'Shannessy's Quality Tours before the departure date, all passengers will be offered the option of transferring to another tour of their choice, hold the funds in trust for a future tour or a full refund. There is no time limit as to when this must be used. If a lockdown is implemented while a tour is in progress, our first priority is the safety and wellbeing of our passengers and ensuring that we get each and every one of them home safely, and therefore we treat every situation individually. The Australian Government (see www.smarttraveller.gov.au) recommends all travellers no matter where you are going, obtain comprehensive travel insurance from a reputable provider. It may enable you to claim back the cost of your tour if you are unable to travel or have to cancel at late notice. Always read the PDS provided, to ensure the cover meets all of your needs. We are able to provide travel insurance through Nib Insurance. If you would like a quote please call our office toll free on 1800 354 352.

CONDITIONS OF TRAVEL

The terms and conditions form the basis of the contract between You and O'Shannessy's Quality Tours (O'Shannessy's Quality Tours "We", "Us", or "Our" contract). It is important that You read the complete list of terms and conditions carefully and that you understand your rights and obligations. This is NOT a complete list of O'Shannessy's Quality Tours Conditions of Travel. A complete list will be provided upon invoice, alternatively they are available upon request via phone, mail, email or on our website. By agreeing to participate in a tour arranged by Us, You are deemed to have accepted these terms and conditions in full.

O'Shannessy's Quality Tours reserves the right to make any alterations to this itinerary as necessary. O'Shannessy's Quality Tours will endeavour to notify you of any significant changes prior to your departure.



Toll Free: 1800 354 352
O'Shannessy's Quality Tours



www.oshannessys.com.au

2121 Point Nepean Road, Rye Vic 3941

Copyright © O'Shannessy's Quality Tours

enquiries@oshannessys.com.au