



BEST OF PERTH

and The Swan Valley



7 DAY FULLY INCLUSIVE TOUR

17th September to 23rd September, 2026

BEST OF PERTH *and the Swan Valley*

THURSDAY 17TH SEPTEMBER TO WEDNESDAY 23RD SEPTEMBER, 2026

Welcome to our tour to Perth.

We usually use Perth as a stepping stone to start or finish our Western Australian tours, so it's time we had a good look at the state's capital. And there's plenty to see!

Apart from Perth and Fremantle, it's a great base for day tours to the north - The Pinnacles; the east - The Swan Valley; and Rottnest Island.

Come with us to explore the most remote capital city on the planet!

TOUR HIGHLIGHTS

- Guided tour of Perth
- Kings Park
- The Bell Tower
- Perth Mint
- Mandoon Estate, Swan Valley
- Guided tour of Fremantle
- The Freo Markets
- Western Australian Maritime Museum
- Fremantle Prison
- The Pinnacles, Nambung National Park
- Guided Coach Tour on Rottnest Island

CRUISES

- Swan Valley Cruise
- Return ferry to Rottnest Island

FLIGHTS

- Melbourne to Perth
- Perth to Melbourne

MULTIPLE NIGHT STAY

- 6 nights in Perth



COACH



FLIGHT



BOAT



SMALL GRP

As a thank you for travelling with O'Shannessy's Quality Tours, you will automatically receive a saving on the total tour price for your second and subsequent tours.

O'Shannessy's Quality Tours will match single travellers who wish to twin share with another single traveller of the same gender. However, if this is not possible, in most cases you shall be provided with single accommodation at the twin share fare (no additional cost).

If you are willing to twin share but are a smoker, have a CPAP machine or snore, you will need to pay a single supplement for a sole use room.



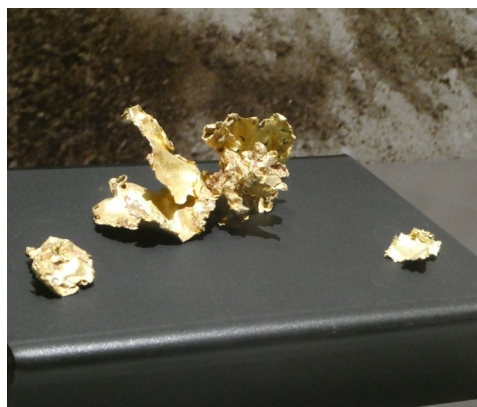
TOUR INCLUSIONS

- **Complimentary Chauffeur Driven Transfers.** Victorian passengers from Greater Melbourne, Bendigo, Torquay, Ballarat, Geelong, the Bellarine and Mornington Peninsulas, Phillip Island and selected areas of Gippsland will be picked up and returned home in a private chauffeured vehicle by one of our professional drivers. For passengers not within this pick up zone, or our interstate passengers, a quote can be provided for home pickup in extended areas.
- **Luxury Touring Coaches.** Our full size, 3 axle luxury coaches have only 32-36 passenger seats allowing you even more personal space and extra leg room. Our coaches are fitted with comfortable reclining seats with aisle arm rests, foot rests, seat belts, panoramic windows with blinds, refrigerator for passenger use, restroom, climate control air conditioning and Road Cam monitors which display the road ahead in real time. Each coach has a second door for easier entry and exit and touchless hand sanitizer dispensers at each entry to help keep everyone safe. Our coaches have full air suspension delivering a smooth and quiet ride which also allows us to lower the coach closer to the ground, making boarding and disembarking even easier.
- **Return Flights.** Economy flights from Melbourne to Perth and return.
- **Tour Directors.** Dedicated O'Shannessy's Quality Tours coach crew (tour directors) on board to ensure your travel experience is memorable.
- **Best Available Quality Accommodation.** Ensuite motel accommodation each night.
- **Attractions.** All tours and interest venues as per itinerary.
- **Meals.** All full cooked breakfasts, morning teas and lunches most days, and two course restaurant dinners daily. Three lunches at your own expense as per itinerary.
- **No Hidden Extras.** O'Shannessy's Quality Tours are fully inclusive.

TOUR COSTS

Twin Share Room First Tour:	\$5,295 per person
Twin Share Room Repeat Traveller 2 - 10 Tours:	\$5,245 per person
Twin Share Room Repeat Traveller 11 - 20 Tours:	\$5,220 per person
Twin Share Room Repeat Traveller 21+ Tours:	\$5,195 per person
Single Room Supplement:	\$ 860 per person

DEPOSIT
\$500pp
UPON
BOOKING



DAY 1

Thursday 17th September, 2026

MELBOURNE TO PERTH

Welcome to our 7 day tour to **Perth**. With chauffeured pickup from home, we travel to Melbourne Airport. Here we'll be greeted by an **O'Shannessy's Quality Tours** representative who will assist us with check in, and see us onto the plane for our direct flight to **Perth**. Arriving at Perth Airport, we will be welcomed by our coach crew who will assist us with our luggage before we board the coach for the transfer into the city. We have time to relax in our lovely accommodation before our first dinner together.

Lunch at own expense and arrangement / Refreshments on flight

OVERNIGHT: Pan Pacific, PERTH ★★★★★

DAY 2

Friday 18th September, 2026

PERTH CITY SIGHTS

Today we spend the morning discovering the unique charm of **Perth City**. With a **local guide** leading the way, we explore the main city block with its unusual combination of skyscrapers and colonial architecture, including St Mary's Cathedral, Government House, Barrack Arch and Parliament House. We'll finish our morning tour with **Kings Park**. One of the biggest city parks in the world, Kings Park gives epic views of the Swan and Canning rivers, and the skyscrapers perched on their banks, this is a vision not to be missed. After lunch, we make our way to Perth Mint, originally opened in 1899 as a branch of the Royal Mint in London. Today it only produces collector's coins and other "one off" things like the 2000 Olympic Medals. The building was constructed with limestone from Cottesloe Beach and features the original Melt House where gold was melted and made into coins. A gold pour will be conducted for us in the same way it was when the building was first constructed. Next, we visit **The Bell Tower**, given to the people of Western Australia as part of the national Bicentennial celebrations in 1988. Via a lift we can access the bell ringing room, the bells themselves and an observation deck. The rest of the afternoon is free, perhaps to have a look through the shops or just to relax back at the hotel.

OVERNIGHT: Pan Pacific Perth, PERTH ★★★★★

THE SWAN VALLEY

There's no better way to see the magnificence of Perth's **Swan Valley** than by water! Relax and enjoy the iconic city skyline and beautiful picturesque landscape as we escape the city and cruise leisurely into the upper regions of the Swan Valley. We'll be treated to a delicious share platter lunch on board with wine, followed by a wine and macaron pairing experience at **Mandoon Estate**! All of this is capped off with live entertainment and tantalizing desserts on board your return cruise.

OVERNIGHT: Pan Pacific Perth, PERTH ★★★★★

EXPLORING FREMANTLE

This morning, we drive to the historic port of **Fremantle** where we meet a local expert who will show us the well-preserved colonial era buildings, the old jetty and the prison and museums. We now have some free time to explore the **Fremantle Markets** followed by lunch at **Cicerello's**, an iconic Fremantle destination since its founding in 1903. It's not only famous for its traditional fish 'n' chips but also home to WA's largest private aquariums. After lunch we visit the **Western Australian Maritime Museum** and take a **tour** through other unique galleries that symbolise WA's maritime past, present and future. Next, we visit the **Fremantle Prison** where we join the "**Behind Bars**" tour to explore the prison and learn of its convict origins in the 1850's until its closure as a maximum-security gaol in 1991. We discover how time was passed in the yards while taking in original prisoner works of art. After a fantastic day of exploring, we then head back to our hotel to freshen up before dinner.

OVERNIGHT: Pan Pacific, PERTH ★★★★★





DAY 5

Monday 21st September, 2026

NAMBUNG NATIONAL PARK - THE PINNACLES

This morning we make our way to **Cervantes** taking the newly opened scenic drive - Indian Ocean Road. We arrive in time for a lunch break before our arrival at the **Lesueur National Park**. A sealed loop road drive circles the park and the main car park adjacent to Mount Lesueur offers a magnificent panoramic view across the park and the pretty coastlines of Jurien Bay and Green Head. Next, we visit the **Nambung National Park** – home to the **Pinnacles**. This unique landscape of limestone pillars is like a moon scene, strange looking formations rising eerily out of the sand, some several metres tall. It is believed the Pinnacles were created millions of years ago as seashells were broken down into sand and then eroded by water and wind. We return to **Perth** where we enjoy dinner in our hotel.

OVERNIGHT: Pan Pacific, PERTH ★★★★★

“...The lunar-like Pinnacles form one of Australia's most unique and fascinating natural landscapes. Formed over millions of years, thousands of tall limestone spires rise eerily out of the yellow desert sands of Nambung National Park...”

ROTTNEST ISLAND

Located just off the coast in the warm clear waters of the Indian Ocean, Rottnest Island is a spectacular world of white sandy beaches, crystal clear blue waters, abundant marine life, rare marsupials and rich history. The island was named "Rottnest" by Dutch explorer Willem de Vlamingh which meant "rats nest" - he mistook the island's unique marsupials - the Quokkas, for giant rats! These curious and cheerful marsupials are recognised around the world and it's worth the journey across from Perth just to see them! The day includes return ferry to the island and a guided coach tour - as well as some free time to relax and enjoy this tranquil place.

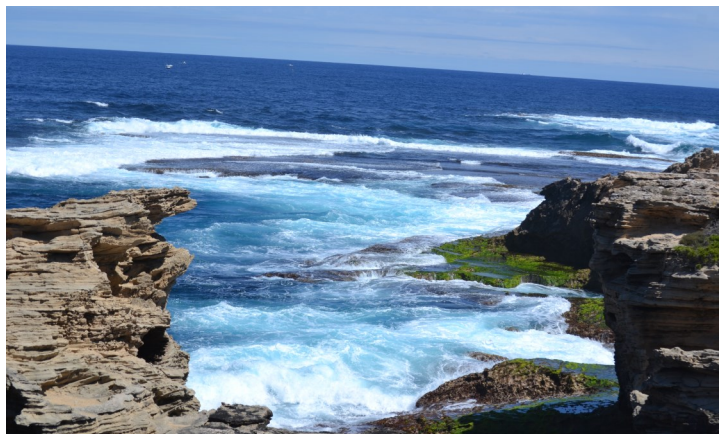
Lunch at own expense and arrangement

OVERNIGHT: Pan Pacific, PERTH ★★★★★

HOMEWARD BOUND

Sadly, our holiday is coming to an end. After breakfast we make our way back to **Perth** Airport for our flight to Melbourne, completing a sensational 7-day tour. As always, our chauffeurs will be there to greet us and transfer us safely home - all part of the **O'Shannessy's Quality Tours** superior service!

Lunch at own expense and arrangement / Refreshments on flight



PAYMENT AND CANCELLATION POLICY

Receipt of payment of funds will be taken as acceptance of O'Shannessy's Quality Tours conditions of travel for this tour. Prices include GST and all taxes. Deposit is fully refundable until **61 days** prior to departure date. Balance due on invoice.

Cancellation 60 to 46 days before tour departure date

20% Refund of Tour Cost

Cancellation within 45 days of tour departure date

No Refund

On or after tour date departure

No Refund

If a tour is cancelled for any reason by O'Shannessy's Quality Tours before the departure date, all passengers will be offered the option of transferring to another tour of their choice, hold the funds in trust for a future tour or a full refund. There is no time limit as to when this must be used. If a lockdown is implemented while a tour is in progress, our first priority is the safety and wellbeing of our passengers and ensuring that we get each and every one of them home safely, and therefore we treat every situation individually. The Australian Government (see www.smarttraveller.gov.au) recommends all travellers no matter where you are going, obtain comprehensive travel insurance from a reputable provider. It may enable you to claim back the cost of your tour if you are unable to travel or have to cancel at late notice. Always read the PDS provided, to ensure the cover meets all of your needs. We are able to provide travel insurance through Nib Insurance. If you would like a quote please call our office toll free on 1800 354 352.

CONDITIONS OF TRAVEL

The terms and conditions form the basis of the contract between You and O'Shannessy's Quality Tours (O'Shannessy's Quality Tours "We", "Us", or "Our" contract). It is important that You read the complete list of terms and conditions carefully and that you understand your rights and obligations. This is NOT a complete list of O'Shannessy's Quality Tours Conditions of Travel. A complete list will be provided upon invoice, alternatively they are available upon request via phone, mail, email or on our website. By agreeing to participate in a tour arranged by Us, You are deemed to have accepted these terms and conditions in full.

O'Shannessy's Quality Tours reserves the right to make any alterations to this itinerary as necessary.

O'Shannessy's Quality Tours will endeavour to notify you of any significant changes prior to your departure.



Toll Free: 1800 354 352
O'Shannessy's Quality Tours



www.oshannessys.com.au

2121 Point Nepean Road, Rye Vic 3941

Copyright © O'Shannessy's Quality Tours

enquiries@oshannessys.com