

DECEMBER
2025

THE LMDA ANCHOR

LMDA BOARD MEMBERS

Elaine Garry

President Emerita

Teresa Boysen

President

Jo Dohrer

1st Vice President

Open Seat

2nd Vice President

Connie Korthals

Secretary/Treasurer

Mike Anderson

Dan Carlson

Murray Driggs

Kyle Elenkiwich

Bob Ellsworth

Jim Farquhar

Gary Fikse

Eddie Fischer

Luke Fortney

Jackie Haggard-Tuschen

Don Helberg

Martin Jarrett

Steve Koch

Larry Kotten

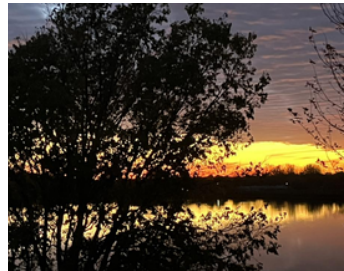
Mark Kuca

Clint Sargent

Mike Swiden

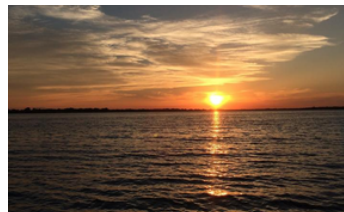
Bob Van Liere

Mike Walz



Representatives Needed!

The LMDA makes every effort to have one representative from each homeowner's association on the lake. At the present time, we are looking for a rep from Sunset Harbor and a second vice president. If you are interested in serving on the Board, please contact Teresa, LMDA President.



Upcoming Meeting Dates February 4th May 12th August 2nd

All LMDA Members are welcome to attend our Board meetings. If you would like to present an idea or concern at the meeting, please send an email to lmdasd@outlook.com.



Our Mission:

Our mission is to promote water safety and to protect the water quality, natural resources, and ecosystems of Lake Madison and the surrounding watershed by promoting conservation, research, and education so the natural beauty and environment of the lake and surrounding area may be preserved for the enjoyment of people today and for generations to come.

It's hard to believe the end of 2025 is upon us. As you're preparing for year-end and tax preparation, please remember that LMDA is a non-profit organization and your membership helps us fulfil our mission.





WHY BE A MEMBER OF THE LMDA?



PROTECT WHAT YOU LOVE

Your membership directly supports efforts that keep Lake Madison clean, safe, and beautiful



STAY INFORMED AND CONNECTED

Members receive The LMMA Anchor e-newsletter with updates & events on the lake



STRENGTHEN OUR LAKE COMMUNITY

LMMA brings residents, businesses, and lake enthusiasts together to promote Lake Madison



SUPPORT LAKE SAFETY

LMMA invests in public awareness around boating, fishing, and ice safety



PRESERVE THE LAKE FOR GENERATIONS

Your dues help fund long-term initiatives that protect water quality and ensure future generations experience the same beauty we enjoy today



BE PART OF SOMETHING BIGGER

Membership connects you with others who share the love for Lake Madison

Support the Lake you Love.

As the year comes to a close, there's no better time to stay anchored in all things Lake Madison.

Your LMMA membership helps finish the year strong by supporting the work that protects and enhances our lake—everything from water testing and shoreline preservation to community education and local improvement projects.

When you join or renew before year's end, you're not just supporting important initiatives — you're choosing to be part of a community that cares deeply about keeping Lake Madison clean, safe, and thriving for the future.

Help us wrap up the year with purpose and continue making a positive ripple across our lake community.

JOIN US!

SVE Awards ORU Grant to Rec Trail

Sioux Valley Energy's Operation Round Up program is a powerful example of how a few pennies can create lasting community impact. Through this voluntary initiative, cooperative members can choose to round up their monthly electric bill to the nearest dollar. Those extra cents—less than a dollar each month—are pooled together to support local projects and organizations through a grant process.

This year, the Lake Madison Development Association (LMMA) was awarded a \$1,000 grant from Operation Round Up to support ongoing recreational trail maintenance. These funds help ensure our trail system stays safe, enjoyable, and accessible for residents and visitors alike.

This contribution went into a perpetual fund, designed to grow over time. Only a limited portion of the account can be used each year, ensuring long-term sustainability. That means there will always be resources available to support trail upkeep and other community-enhancing projects.

Thanks to Sioux Valley Energy and its members who choose to round up, small daily acts of generosity continue to fuel long-term improvements across our region—one penny at a time.



Year-End Tax Deductible Contribution

As 2025 draws to a close, we invite you to consider a year-end, tax-deductible donation to the Lake Madison Recreation Trail. Your contribution directly supports the construction of a safe, accessible recreation trail around the lake.

Completing the trail will provide lasting benefits for our community and visitors alike, offering new health and recreation opportunities for walkers, bikers, and runners. It will also help stimulate economic growth for local businesses.

Thank you for supporting a project that will strengthen our community for years to come.

**Donate to the
Rec Trail
Maintenance Fund**

**Donate to the
Rec Trail
Program Fund**

LMDA Offers Incentive to Landowners



The Lake Madison Development Association (LMDA) Board of Directors approved payment of an incentive to landowners who want to help improve the lake's water quality. Landowners must own at least forty acres within the Lake Madison Watershed and enroll this land into the Conservation Reserve Program (CRP), Conservation Reserve Enhancement Program (CREP), or any other Government-approved Best Management Practice (BMP) program. The land must be located within one-fourth mile of any surface water body, such as a lake, river, stream, slough, etc.

A representative of LMDA and the East Dakota Water Development District (EDWDD) will evaluate the land and certify that it qualifies for this incentive.

The incentive is a one-time payment of \$50 per acre as a thank you in aiding our efforts to improve the water quality in Lake Madison. Twenty-five dollars is paid by LMDA, and the other half is paid by EDWDD.

Over 250 land parcels, owned by 145 different landowners, meet the criteria for this incentive.

The project is currently funded at \$40,000; \$20,000 committed by each entity. These funds would cover grants for a total of 800 acres.

Any interested party may also make a donation to LMDA, specifically requiring the donation be used for water quality efforts. These donations can be made by mailing a check to LMDA, P.O. Box 296, Madison, SD 57042.



Lake Restaurant Hours



Monday-Thursday | 11AM-9PM
Friday & Saturday | 11AM-2AM



Monday, Tuesday, Thursday | 3-10PM
Friday | 3-12PM
Saturday 12PM-12AM
Sunday | 12PM-9PM



Wednesday, Thursday & Sunday
11AM-8:30PM
Friday & Saturday | 11AM-9:30PM



Closed for the Season

Clean & Clear After Every Snow Storm

Watching for falling snow and ice

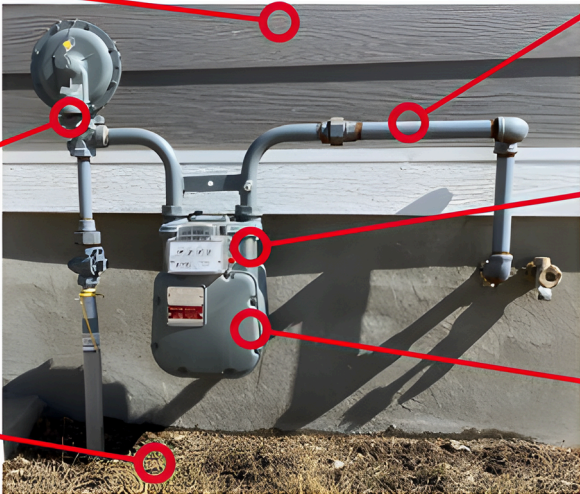
Snow should also be cleared from the roof above the meter to prevent falling snow or ice from damaging the meter or associated piping.

Keep your regulator vent clear of snow and ice

Your natural gas meter's regulator vent must always be clear so the flow of natural gas into the home can be regulated properly.

Clear a path to your meter

Be sure there is a path to your gas and electric meter in case we need to access them in an emergency.



Clear snow from all piping

Heavy snow on piping can cause pipes to break leading to gas leaks.

Never use a shovel on the meter

Clear off your gas meter gently using your hands or a broom

Clear all snow from the meter

Allowing a winter's worth of snow to pile up on a meter can lead to pipes breaking, causing dangerous gas leaks.