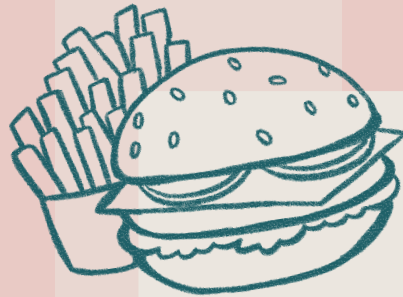


HEY KIDS!



Hungry? You've come to the right place!



Mains

MAC & CHEESE (V)

Classic macaroni pasta and cheese

BEEF BURGER & FRIES

American cheese, lettuce, tomato ketchup

FISH & CHIPS

Peas, lemon

CHICKEN SCHNITZEL

French fries, peas

SIRLOIN STEAK 6OZ

+5 Supplement
Grass-fed 6oz sirloin, fries

Please ask your server if you would like any dishes served puréed or mashed.

INCLUDES

Dessert

ICE CREAM SCOOP

Choice of vanilla, chocolate, pistachio or strawberry sorbet

+

Drinks

CHOOSE FROM

Coca-Cola, Diet Coke, Coke Zero, Fanta or Lemonade

JUICES

Apple, Orange, Pineapple, Cranberry, Grapefruit or Tomato Juice

BUBBLE TEA

Peach & Mango or Passionfruit & Strawberry
+5



Time for a sweet treat!

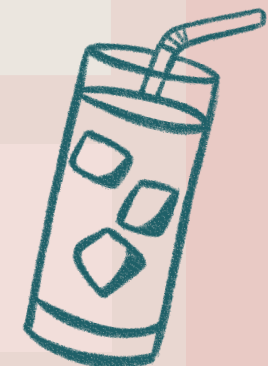


Turn over for fun activities



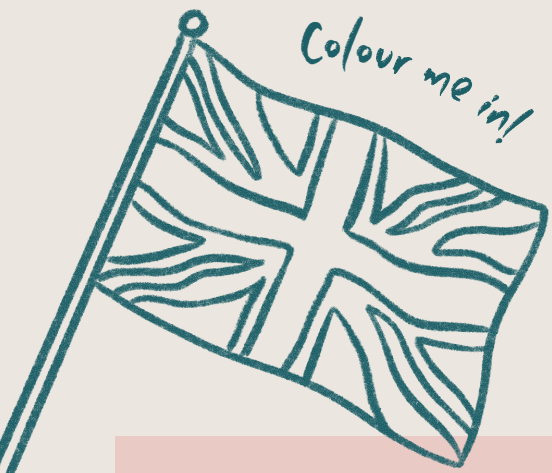
Allergens & more

Scan the QR code for nutritional values & food allergens. Adults need around 2,000 kcal a day



Steak and Company

Please use the key to find suitable dishes: V Vegetarian / VG Vegan. Guests with allergies and intolerances should make a member of the team aware before placing an order for food and beverages. Guests with severe allergies or intolerances should be aware that although all due care is taken, there is a risk of allergen ingredients still being present. A discretionary service charge of 12.5% will be added to your bill. Proceeds are shared with our team.



Let's have some fun!

Landmark Scramble

Unscramble the letters to find the names of 3 famous London landmarks

HTE IHRGKNE

RWETO GRBIDE

NLDONO YEE

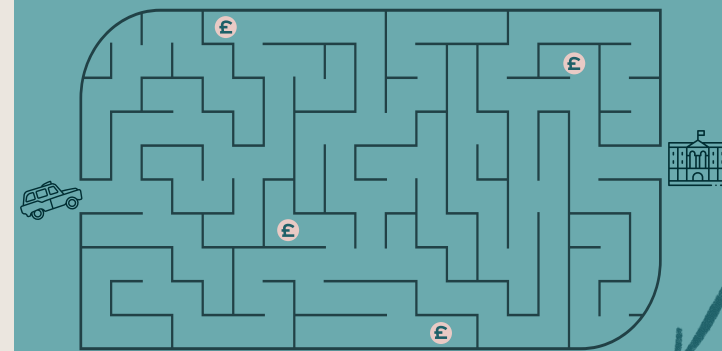
Let's Colour!

Bring Big Ben to life with your favourite colours!



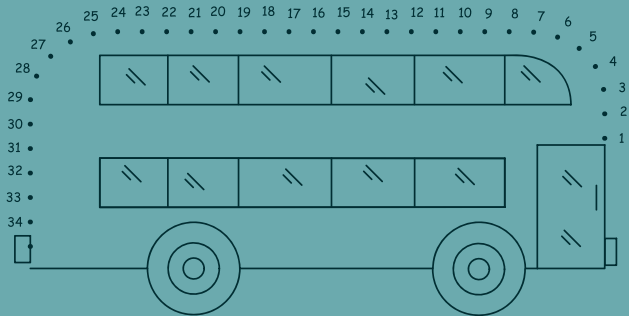
The Palace Maze

Can you guide the taxi through London's streets all the way to the Buckingham Palace? Don't forget to collect the pound coins along the way!

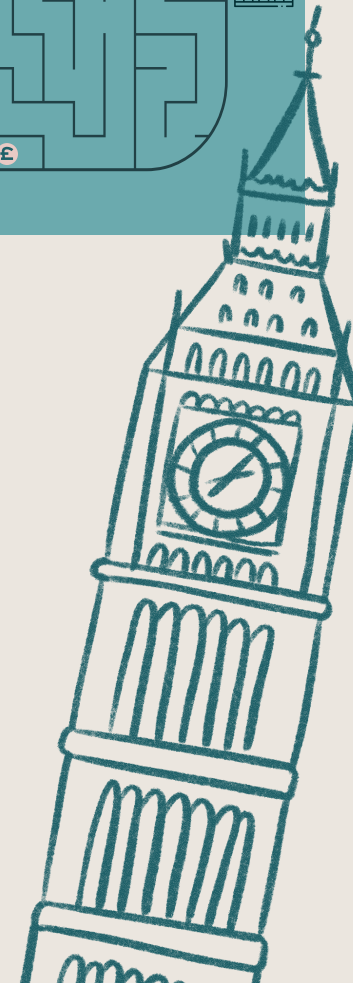


Connect the dots!

Join the dots to reveal a London double-decker bus!



Add a splash of colour!



Steak and Company