

PRODUCT OVERVIEW

OpenText™ Exceed™ TurboX

Access graphically demanding software remotely with a virtual application and desktop solution with an exceptional user experience and low internet bandwidth demands



Implement lean, cost-effective virtualization for Windows®, Linux® and UNIX®



Provide full remote Windows usability



Work remotely with local-like performance



Protect systems and IP with security

Hybrid work is the new normal. Organizations are rethinking how their IT services are delivered to best serve both on-site and remote employees. To modernize and increase efficiency, organizations are implementing an application virtualization infrastructure model that can be hosted in datacenters or in the cloud, providing high-performance virtual desktops and apps.

OpenText™ Exceed™ TurboX enables lean and cost-effective implementation of virtual desktop (VDI) infrastructure for all Windows® and Linux® desktops. The solution scales from a few users to large-scale VDI systems supporting several thousand users.

Exceed TurboX enables remote work for the most graphically demanding Windows and Linux applications, such as those used in engineering for product design. Organizations looking to host 3D and 2D product design software in centralized datacenters or in the cloud can rely on Exceed TurboX for performance and interactivity superior to those provided by free or Open-Source software.

Implement lean, cost-effective virtualization for Windows, Linux, and UNIX

Exceed TurboX enables secure, virtual desktops and applications, allowing a hybrid cloud Virtual Desktop Infrastructure (VDI) so staff can work from anywhere using any device. It requires less software and hardware infrastructure than competing solutions, allowing a lean, cost-effective virtualization environment.

Leading airline IT provider leverages OpenText™ Exceed™ TurboX for centralized administration, robust security and solution stability.

"We have a 24/7 technical help desk. With OpenText Exceed TurboX, we can look into the system, share screens, as well as take over sessions to troubleshoot critical issues. We can better support our customers using session sharing than we can by dealing with the problem over telephone or email. Any customer issues can quickly lead to costly flight delays. It is helping us when we are helping our customers."

Christian Baumbach
Senior Project Manager
Lufthansa Systems

[Read the Success story](#)

Provide full remote Windows usability

The Exceed TurboX Windows Direct protocol, which is faster than RDP, provides a great user experience even over low-bandwidth connections. Users can take advantage of features such as local printing, using local-USB devices and audio and video streaming. Administrators can fine-tune local access settings to preserve digital IP security.

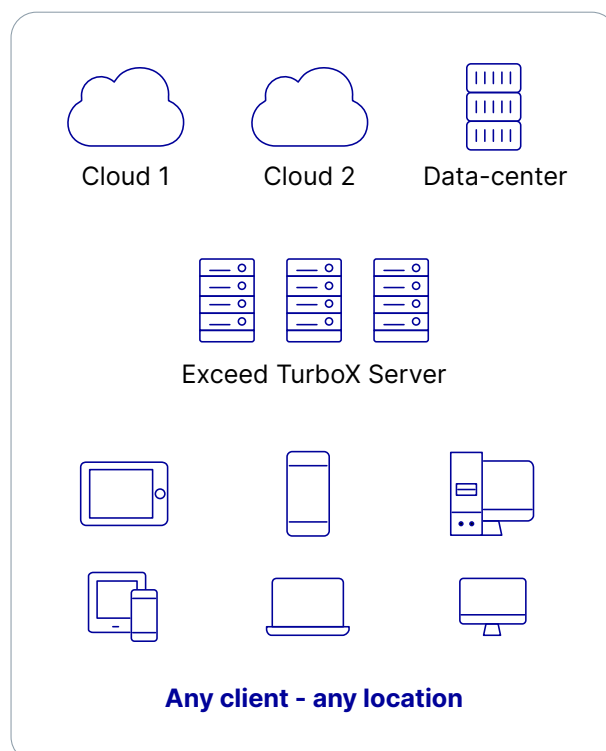
Work remotely with local-like performance

A well-performing virtualization infrastructure allows for a local-like, high-end user experience, ideal for highly specialized desktop applications. GPU balancing for Windows DirectX applications provides a better shared GPU experience and dual-screen 4K monitor support.

Protect systems and IP with security

Organizations can encrypt all data streams between the ETX server, application servers and clients using OpenSSL version 3. Security can be taken even further with optional Windows Direct protocol support for smartcards on local devices for remote authentication.

Exceed TurboX provides leaner and cost-effective VDI compared to Citrix® and VMWare®. Power users will appreciate the performance and stability of Exceed TurboX over competing solutions (free, Open-Source and Microsoft® RDP). One easy web dashboard allows IT to configure application servers, load balancing, users, user groups, remote desktops, remote applications, authentication configuration, maintenance, licensing, notification thresholds and reporting.



New features of Exceed TurboX 12.5

Administrative features

ETX Server for Windows

Added the video driver version used in the proxy logs

Administrators can now access the end users' performance panel from the Server Manager Sessions grid

New redirection options on profile to support enabling USB, Smart cards, and printers

New ability to register a Windows node on a different server without needing to uninstall

Define a maximum file size limit to transfer

ETX is now using the latest VirtualGL 3

'Max search result' option in the sessions grid in SM

Applications can now be configured to run in Windows Direct mode

Ability to define the maximum number of sessions per user by Node group

Ability to define a minimum size for the dynamic resizing policy

Ability to notify a user when their session has been reassigned

Moved the etxproxy to the cgroup slice so resource constraints or management commands are applied to the users proxy

Added an option to apply changes made to default user settings to all existing users and/or user groups to REST call

Provided an option to terminate suspended sessions for administrators

New REST API call to kill all sessions

Permit the change of a domain username in ETX though an API

New option to disable the Help icon on the ETX dashboard

A new URL to return the load average based on CPU load of ETX Server

New 'Node roles' search options in Server Manager

Ability to message to users running on a specific Node Group

New prompt to warn users on a profile deletion

Session termination warning uses the session description

Disable mail notification for Admin (Read-Only) user accounts

Performance features

Performance improvements made to better support dual 4K monitors

Ability to run a Windows application using the fast Windows Direct mode

Transferring files that need compressing now use streaming compression

New features of Exceed TurboX 12.5

Security features	For enhanced security, the Content-Security-Policy has been set to default-src 'self'
	Implemented the use of OpenSSL 3
	Added Kerberos authentication for connection nodes
	Improvements to CA Siteminder authentication
	Added a utility to mask sensitive data in the database dump file
	Added an expiration attribute to the ETX_JSESSIONID_XXX cookies
User features	Suppress file transfer messages over ETX direct session
	Ability to initiate the start of a user defined Windows application in Xstart
	Provides the ability to forward audio to the user through Windows Direct sessions using native client
	Provides the ability to forward audio to the user through Windows Direct sessions using web client
	Provides the ability to use and connect a local USB stick on the client side to the application host server
	Added support to use UDP for audio redirection
	Restrict the resizing of windows when 'fixed' is defined in the profile. Once the session has started, the root window size will no longer change, and number and size of the monitors will no longer change
	Added the ability to recover a session after an unexpected ETX Server failure
	Limit the minimum resize policy to 800×600 for Mac® client
	Improved the behavior and accessibility of the FS toolbar for various configurations
	Retain the sort order in the Dashboard and Server Manager grids
	Language support for Simplified Chinese and Traditional Chinese
	Modifications made to profile tiles to better present the suspend and information options
	File and Print Manager window can now be minimized while in use
	New option to swap the Control and Command keys for Mac O/S
	Ability to show more than 12 users in the Session Manager window
	Suspended Session description is now shared on three lines
	Keep session owner screen static on Mac when sharing session, resize sharing user screen to match owner
	Support for BEPO and Colemak keyboard
	Option added to allow session participants (not just session owner) to add additional users to shared session
	Added an option to PIN the full screen toolbar by default
	Messages sent to suspended sessions now pop up to user once session is resumed
	Improvements to dynamic session resizing for Windows 10 using web client

New features of Exceed TurboX 12.5

Suspended native client session in multi-window-mode is resumed in multi-window-mode

Added the ability to allow a user import multiple users to a session by uploading a CSV formatted string to the Session manager screen

Supported platforms

ETX Server

- Red Hat® Enterprise Linux® 7.9 or later, 64-bit
- CentOS® 7.x, 64-bit
- Oracle® Solaris® SPARC® 11.4 or later, 64-bit
- Oracle Solaris x86-64 11.4 or later, 64-bit
- SUSE® Linux Enterprise Server 12.3 or later, 64-bit
- Windows 8.1, 10, 11, 64-bit
- Windows Server® 2012 R2, 2016, 2019, 2022 64-bit

Connection Node

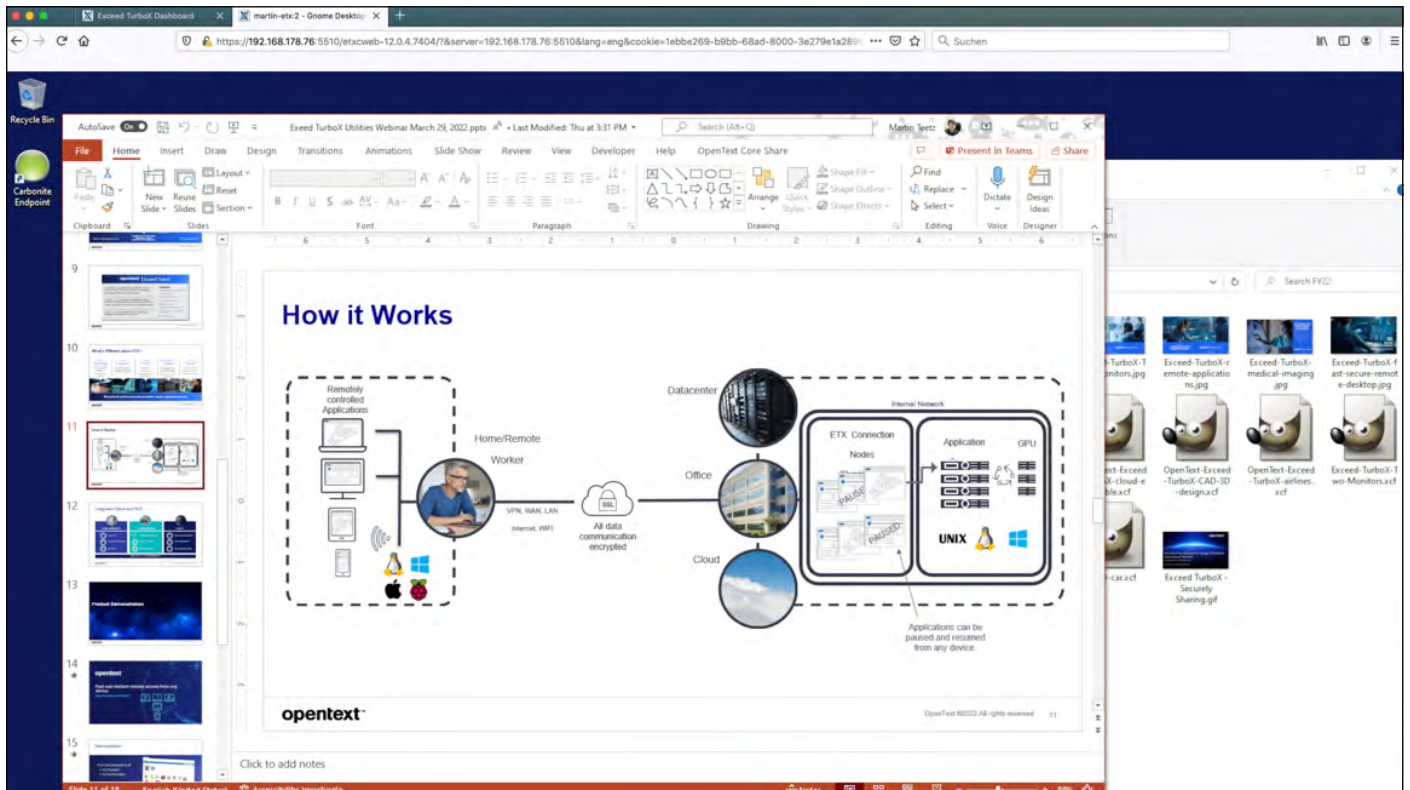
- Oracle Solaris SPARC 11.4 U13 or later, x86- 64-bit
- Oracle Solaris x86-64 11.4 U13 or later, x86-64-bit
- Red Hat Enterprise Linux 7.9 or later, x86-64-bit
- SUSE® Linux Enterprise Server 12.3 or later, x86-64-bit
- CentOS 7.x, x86-64-bit
- Ubuntu 20.4 or later on ARM Linux 64-bit
- IBM AIX® 7.2 TL4 or later, 64-bit
- Windows 8.1, 10, 11 x-86-64-bit
- Windows Server® 2012 R2, 2016, 2019, 2022, x86-64-bit

Client

- Windows 8.1, 10, 11, x86-32-bit and x86-64-bit
- Windows Server® 2012 R2, 2016 and 2019, 2022, x86-64-bit
- Red Hat Enterprise Linux 7.9 or later, x86-64-bit
- CentOS 7.x, x86-64-bit
- Ubuntu 20.4 or later on ARM Linux 64-bit
- MacOS™ 10.15 (Catalina) or later

Web Browsers

- Microsoft Edge®
- Mozilla® Firefox®
- Google Chrome™
- Apple® Safari®



Windows virtual desktop in a browser tab. Exceed TurboX web client.

[Learn more](#)

[Request a trial](#)

About OpenText

OpenText, The Information Company, enables organizations to gain insight through market leading information management solutions, on-premises or in the cloud. For more information about OpenText (NASDAQ: OTEX, TSX: OTEX) visit: [opentext.com](https://www.opentext.com).

Connect with us:

- [OpenText CEO Mark Barrenechea's blog](#)
- [Twitter](#) | [LinkedIn](#)