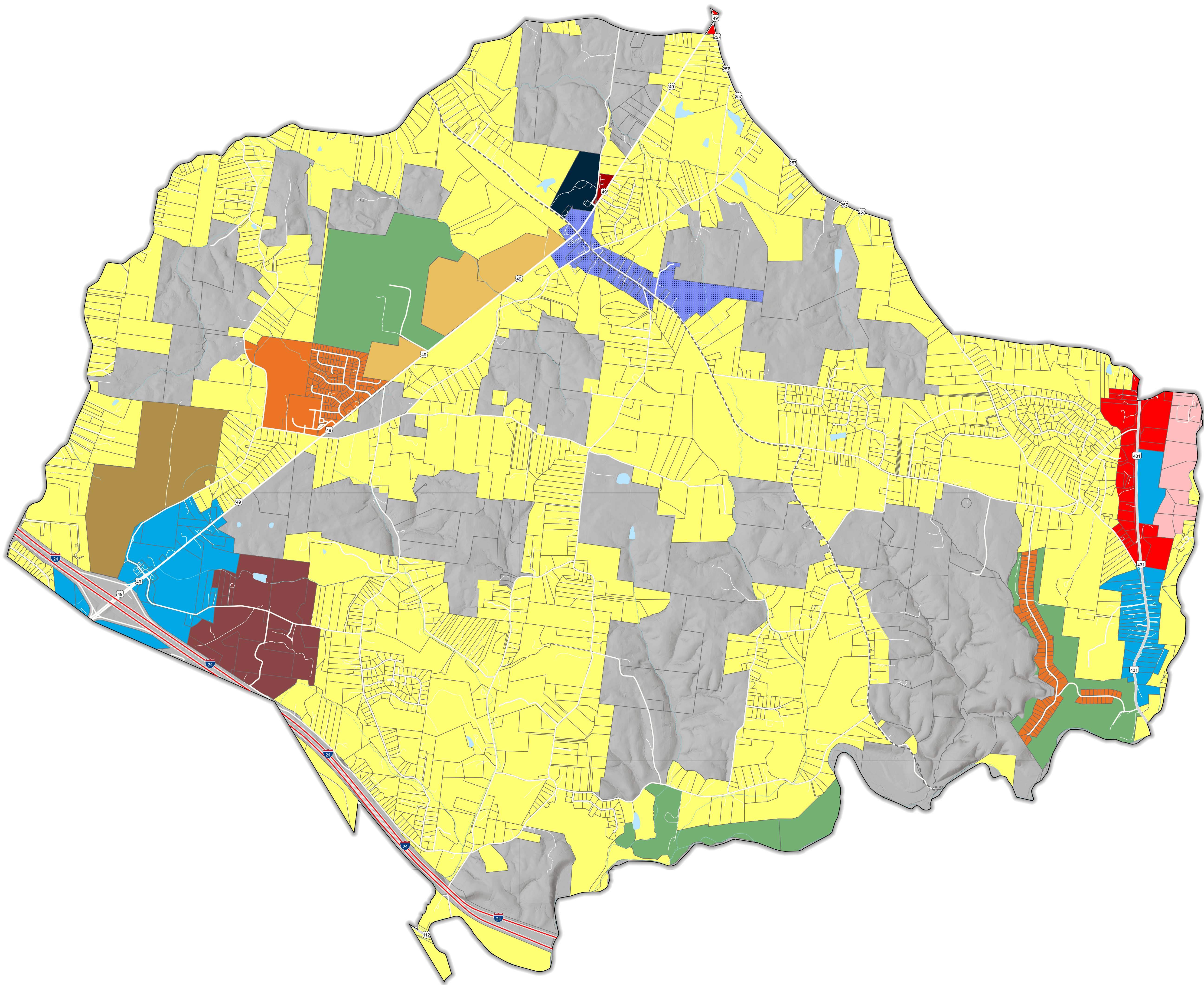


**Illustration 13**  
**Coopertown Development**  
**Plan Concept**



**Future Land Use Designations**  
**2024**

- Agricultural Preserve Areas
- General Commercial
- General Industrial
- Interstate Industrial
- Mixed Use Industrial or Commercial
- Mixed Use Residential/Commercial (MURC) or Commercial
- Mixed Use Residential/Commercial (MURC) or Medium-High Density Housing
- Medium/High-Density Residential
- Mixed Use Commercial, Public Service
- Parks/Recreational
- Public Service
- Rural Residential
- Town Center
- Trail of Tears National Historic Trail
- Corporate Limits
- Parcels

