

CCT
6500K
CRI: 80 Ra

Applications

Outdoor
Park
Landscape

Construction:

Body: ABS
Ambient temperature: -20°C to +50°C
Installation: Wall Mounted

Working Mode

Sensor + Off
Sensor + Slight Light
20% brightness of fully bright
OFF

Solar Wall Light OWL I

Features:

- Innovative Design with Presence sensor
- Adjustable 130° for each eyeball movement
- Attractive design
- Easy installation and operation
- Different Working modes
- Rated lifetime :20,000 hours



Product Variants

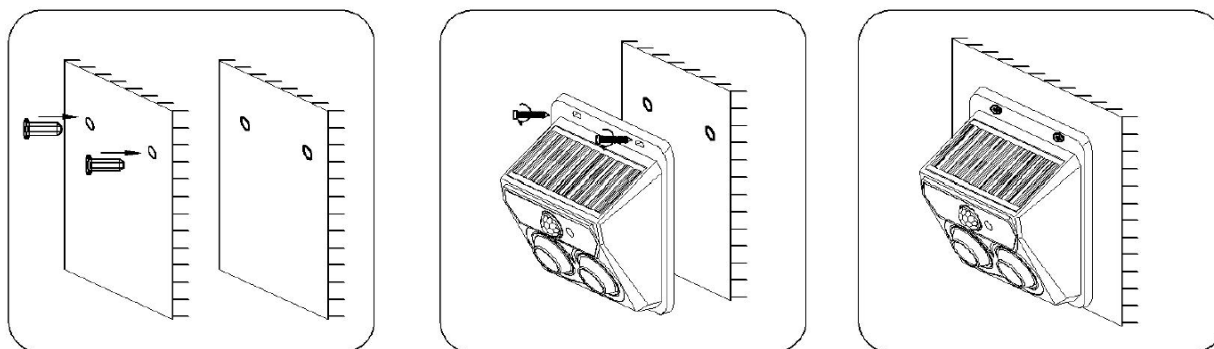
Product Code	Wattage	lumens (lm)	lm/W	Dimension: mm (LxWxH)
FEWLSO1WOWLI	1W	40	40	116x58x116

Solar Panel and Battery Specs

Voltage	Wattage	Battery
5.5V	0.5W	1200mAh

Light Control	Automatic turn-off & charging on day-time; Automatic turn-ON at night.
Sensor Mode	Infrared Induction
Sensor Distance	3-5Meters
Beam Angle	36° C of Lens, 130° max of Eyeballs
Charging Time	4-6hours (>40000lux)
Luminous Flux of Full ON	40LM(max)
Unit Size	116*58*116mm
Material & Color	ABS in Black
IP Rating	IP65

Installation Instructions.



- 1) Mark the installation holes on the wall.
- 2) Use a drill to make holes at the marked position, insert the plastic expansion tubes into the holes.
- 3) Fix the lamp on the wall with screws.
- 4) Press the Switch to select the working mode.

Operations Instructions.

Press the Switch to select Control Mode, which can be switched cyclically. No need to choose again after select mode:

- 1) Press the button to enter Sensor+OFF mode: Lamp will be fully bright when people around, lamp will be OFF after people left in 20 seconds.
- 2) Press again the button to enter Sensor+Slight Light mode: Lamp will be fully bright when people around, lamp will be slight light after people left in 20 seconds.
- 3) Press again the button to enter Constant Light Mode: Lamp will be light 20% brightness of fully bright.
- 4) Press again the button to enter OFF mode: Lamp OFF.

Product Description

- 1) This lamp is solar photovoltaic lighting, green and environmentally friendly, low voltage & safety.
- 2) Widely used in courtyards, lawns, gardens etc.
- 3) Please do charging under sunshine for 6 hours at least before use.
- 4) The lamp will be automatically charged during the daytime, and automatically lighted up at night.
- 5) Easy installation, no wiring, no electricity connection.
- 6) When installing, please install the lamp in a place with strong sunlight and pay attention to the installation angle to ensure that the solar panel has enough sunlight to charge the battery.
- 7) The charging effect of the solar panel depends on the sunlight, light time and weather conditions. The lamp will be charged faster under stronger sunshine. In rainy or cloudy days, the charging effect will be weakened and the lighting time will be shorter.
- 8) The lamp has charging over-voltage protection and low-voltage discharge protection, safety & stable quality.
- 9) Creative appearance, Independent R & D and production, patented private mold.

Warning

Please keep the installation tools away and put them out of the reach of children.
It contains batteries, which are recyclable items, please do not throw them away.
It contains batteries. The product is strictly prohibited from being placed on fire, as it may explode.
Please do not connect to 110/220V AC electricity to avoid damage.
In order to get better use effect, clean up the dust or debris on the solar panel every 3-4 months.
In autumn, winter, continuous cloudy or rainy days, the charging effect will be weakened and the lighting time will be shortened, which is normal.
Do not install lamps near air conditioners, heating objects, or high-voltage power grid systems.