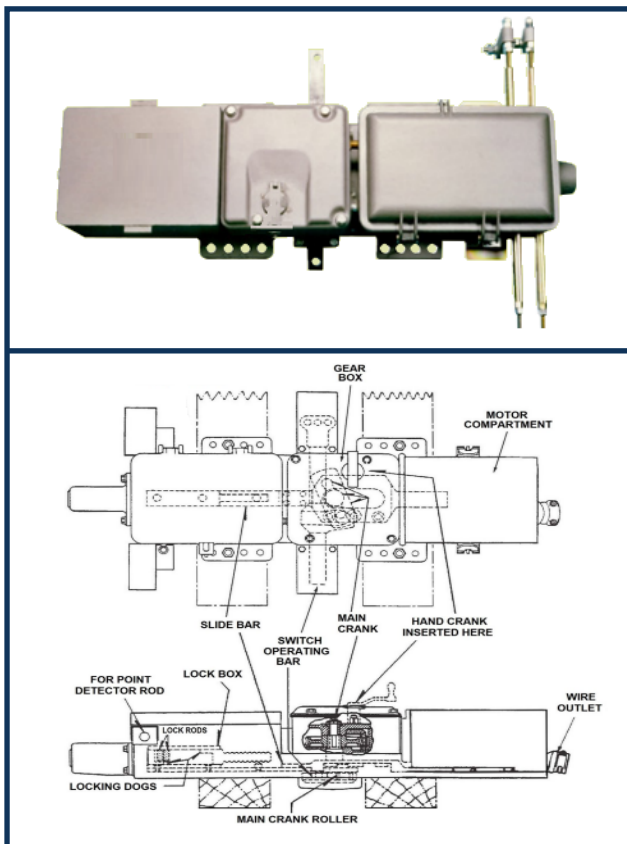


ELECTRIC SWITCH MACHINE

Model IRM3A



TECHNICAL DETAILS:

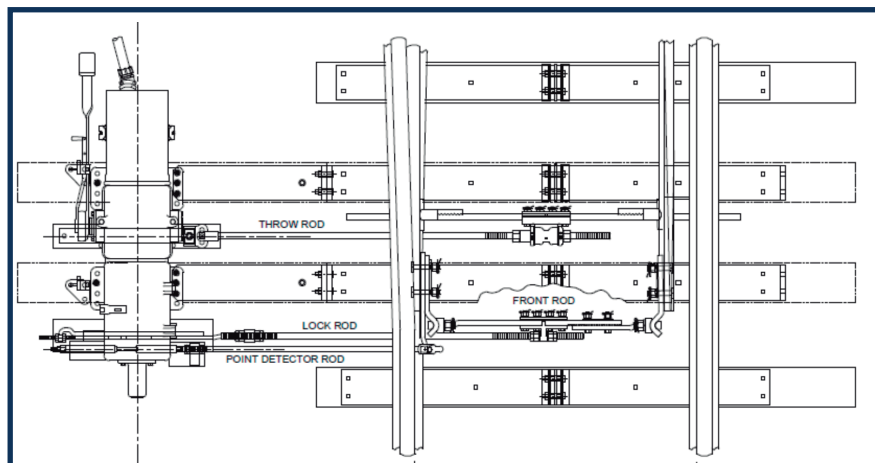
Length x Width x Height:

63.5" L x 33" W x 10.25" H

Weight: 810 Lbs (367 Kg)

Motor Voltage	Throw Time	Gear Ratio	Clutch Setting
110 Vdc	4.5 seconds	189:1	14 amps
110 Vdc	8.0 seconds	360:1	10 amps
20 Vdc	15 seconds	360:1	23 amps
20 Vdc	26/34 seconds	528:1	12 amps

The Electric Switch Machine Model IRM3 is a fail-safe equipment, in accordance with the AREMA Standards (AAR), which is used to drive the points (AMV's), by remote or local command, determining its position in normal or reverse locking, ensuring the locking of the points (AMV's) and providing position indication (normal/reverse).



Lay-outs

5 years warranty against manufacturing defect.

Part Numbers:

Right Hand: 2-04-2-1303-A-R

Left Hand: 2-04-2-1303-A-L

Contact us for special configurations