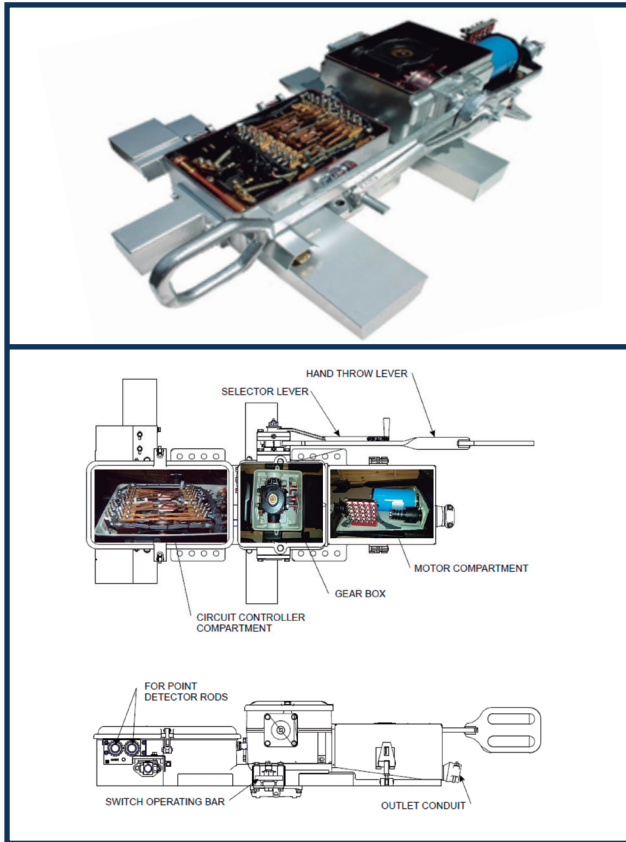


# Intertech•Rail®

## ELECTRIC SWITCH MACHINE

Model IR M23A



### TECHNICAL DETAILS:

Length x Width x Height:

60-1/4" x 33" x 14"

Weight: 900 Lbs

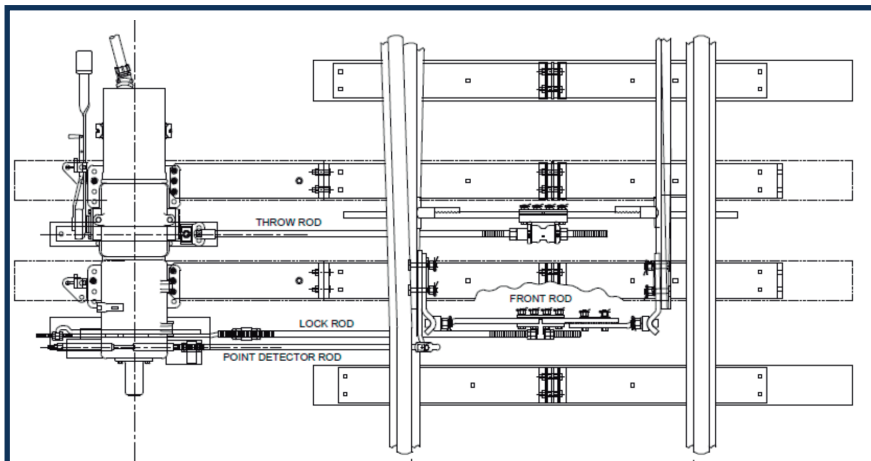
Motor Voltage: 110 VDC

Nominal Speed: 3 sec

Gear Ratio: 189:1

Clust Adjustment: 15A

The Electric Switch Machine Model IRM23A is a fail-safe equipment, in accordance with the AREMA Standards (AAR), which is used to drive the points (AMV's), by remote or local command, determining its position in normal or reverse locking, ensuring the locking of the points and providing position indication (normal/reverse).



Lay-outs

5 years warranty against manufacturing defect.