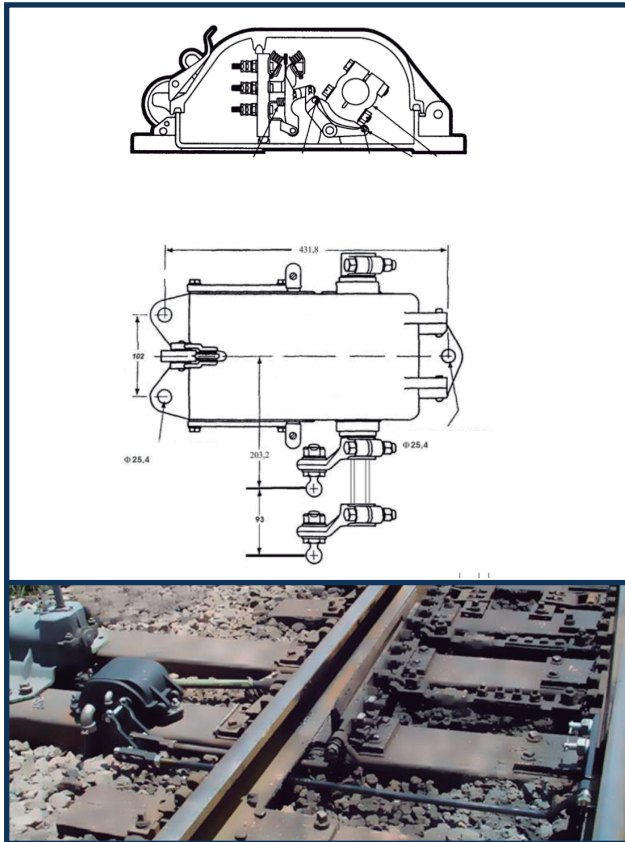


SWITCH CIRCUIT CONTROLLER

IR100 & IR210



The IR100 and IR210 switch controllers are sensitive because the contacts are transferred from their position with an adjustable movement between 3 and 6 mm in the switch points; It is reliable because it has positive action contact mechanism with spring contact pressure resistance against vibration; Both are versatile due their set of operation adjustable cams contacts that shall works simultaneously or progressively, being able to operate to the right or left side of the track, with a simple inversion of the con-centric axis. Simple maintenance where the cover provides easy inter-nal access to the contacts, adjustab-le mechanical parts and electrical connection terminals.

The IR100 and IR210 switch circuit controllers are for wide range of application monitoring the position of rail switch points, one or two points of the switch points, providing electrical signals to control the indication of electric switch locks, electric switch machines, hand-operated mechanical switches, spring switches, derail blocks, etc. IntertechRail circuit controllers meet the most demanding regulatory specifications and is prepared to act in the most stringent requirements of the railway sector, in adherence with the AREMA and CENELEC standards. They have high sensitivity, reliability and robustness to support mechanical stresses under a wide variety of environmental conditions.

