

Galebreaker CalfHub

Optimising Calf Housing



EST. 1984

Galebreaker[®]
AGRI

01531 637900
galebreaker.com

Calf Health and Housing

Calves are often housed in sub-optimal conditions yet a healthy calf is the foundation of a profitable dairy or beef enterprise. For more than 40 years, Galebreaker has been at the forefront of livestock housing research, now together with our **Animal Welfare Team**, have developed a calf rearing system which prioritises the importance of the environment on calf health and welfare.

Optimising the Key Factors in Calf Health

- Air Speeds/Draughts
- Temperature
- Moisture
- Fresh Air
- Hygiene

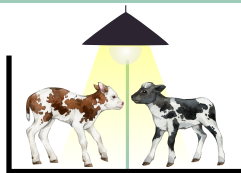


The CalfHub Journey Day 1 - 80



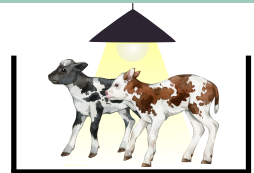
Day 1

Individually boxed with heated lid to enhance drying after birth and maximise colostrum uptake.



Day 2-3

Paired calves visible through the dividing panel, with a heat lamp and cover applied if needed.



Day 3-5

Paired with adjacent calf through removal of central divider. Heat lamp and cover applied if required.

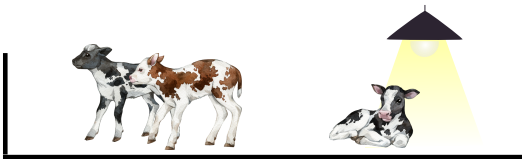
The Galebreaker Solution

The Galebreaker CalfHub is a group calf housing system that combines proven design principles with smart technology to deliver consistent fresh air, healthier calves and simpler daily management – whatever the weather.

From day one through to weaning, the Galebreaker CalfHub supports calves at every stage of their development. A seamless transition from individual to group housing ensures the right environment at each phase.

The Galebreaker CalfHub delivers real benefits on farm:

- ✓ Strong growth rates - up to 250g per day more than hutch systems
- ✓ Improved health & welfare
- ✓ Up to 75% reduction in labour time
- ✓ Better working conditions



Days 5-30

Enters group pen and introduced to automatic feeder. Infrared heat lamp applied to bedding area, automatically switched on if pen temperatures are less than 13°celsius.



Days 30-49 | Days 49-70 | Days 70-80

Infrared heater removed as the calves are becoming more robust.

Galebreaker CalfHub © 2026 Patents Pending

A comprehensive range of design features, considerations and products have been carefully selected to create the Galebreaker CalfHub, delivering group calf housing that combines proven ventilation design with smart technology for a healthier environment.

Ventilation Ridge exhausts warm, stale air along the length of the building

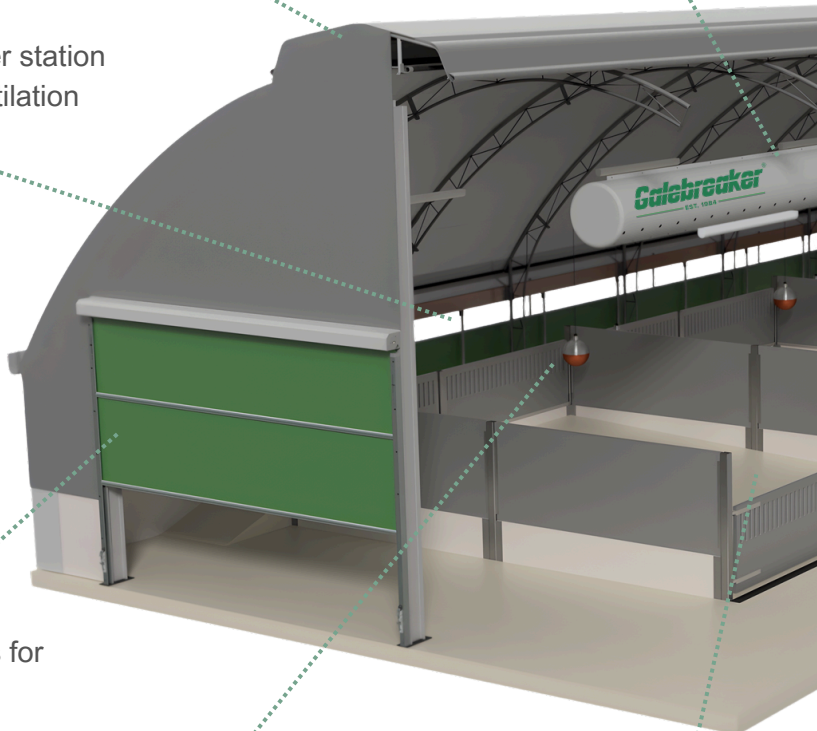
VentTube Fresh

VVS® with weather station for automated ventilation control

Agridoor Classic Plus for easy access

Pen infrared heat lamps

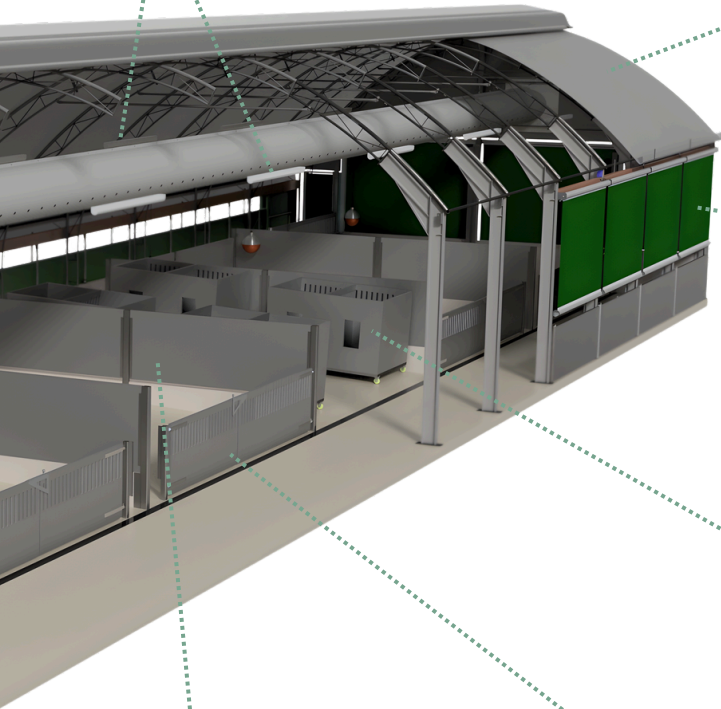
5% sloping floor for efficient pen drainage





Automated LED Lighting

Translucent Fabric covering creates an aerodynamic finish and enhances natural light



Rollerscreens above each gate provide extra ventilation or weather protection as needed

Moveable individual calf boxes for days 1-5 or to isolate sick calves

Cleanable pen partitions and doors

Drive in pen access through each bay

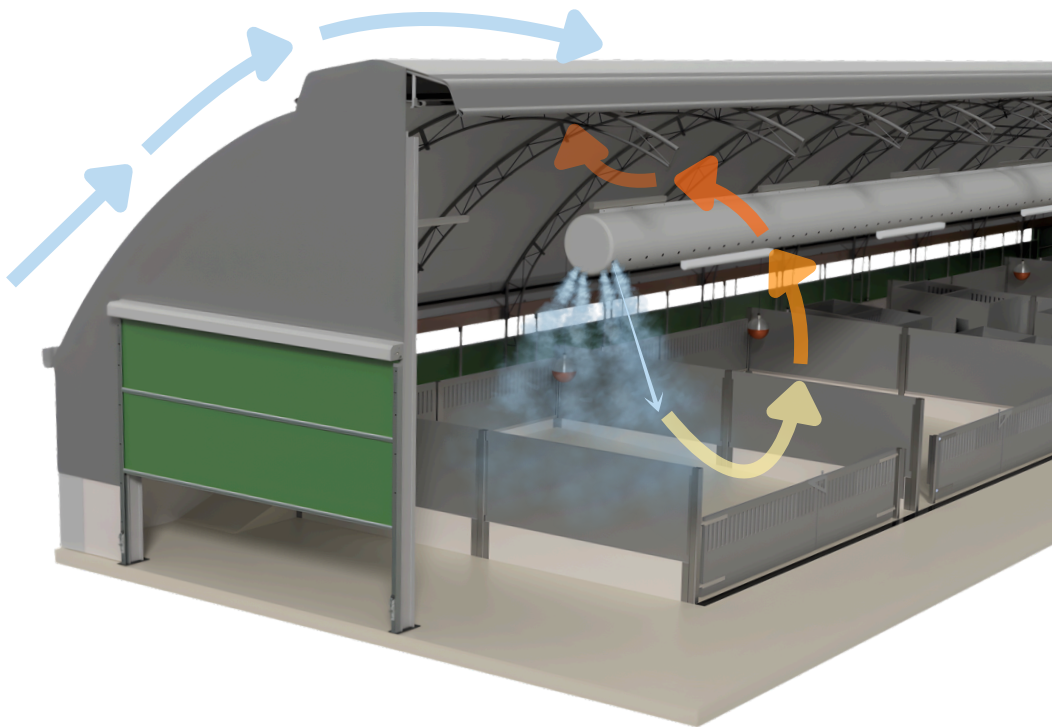


An Optimised Environment

The Galebreaker CalfHub needs to be positioned with the prevailing wind passing over the ridge – this maximises natural ventilation through the side curtains with the acceleration of air over the ridge causing low pressure which draws air out of the building – further enhancing ventilation throughout the building.

The building needs to be orientated to allow the prevailing wind to pass over the ridge, and should be positioned upwind from other livestock buildings.

VentTube Fresh (Galebreaker's Positive Pressure Tube Ventilation system) provides 8 air exchanges every hour, all year-round. Fresh air enters across the length of the building to push out stale air, lowering pathogen levels and giving each pen direct fresh air. Air speeds stay below 0.3 m/s at calf height to avoid drafts while keeping the environment fresh.



When the building reaches a set temperature the **Galebreaker VVS**® curtains automatically open, and **Rollerscreens** can be retracted to create an open building with more than 40 air exchanges/hr. In high winds or rain, the curtains close with edge sealing strips preventing drafts and rain from entering. A birdnet covers the curtain openings to prevent birds from entering when the curtains are open.



The building features a **translucent roof** which maximises natural daylight and brings additional warmth to the building during clear winter days.

The **Galebreaker VentLogic**® controls the VVS® automatic side curtain, lighting, VentTube and pen infrared heaters. It monitors temperature, humidity, CO₂, NH₃, external lux, temperature, wind speed, wind direction, rain, water usage, and dry feedbin weight. Data is available via a mobile app (with system override) and a web portal for accessing and exporting historical data.



An Optimised Design

The Galebreaker CalfHub includes several design features which saves time and labour on routine tasks allowing more time for assessing calf behavior, for instance:

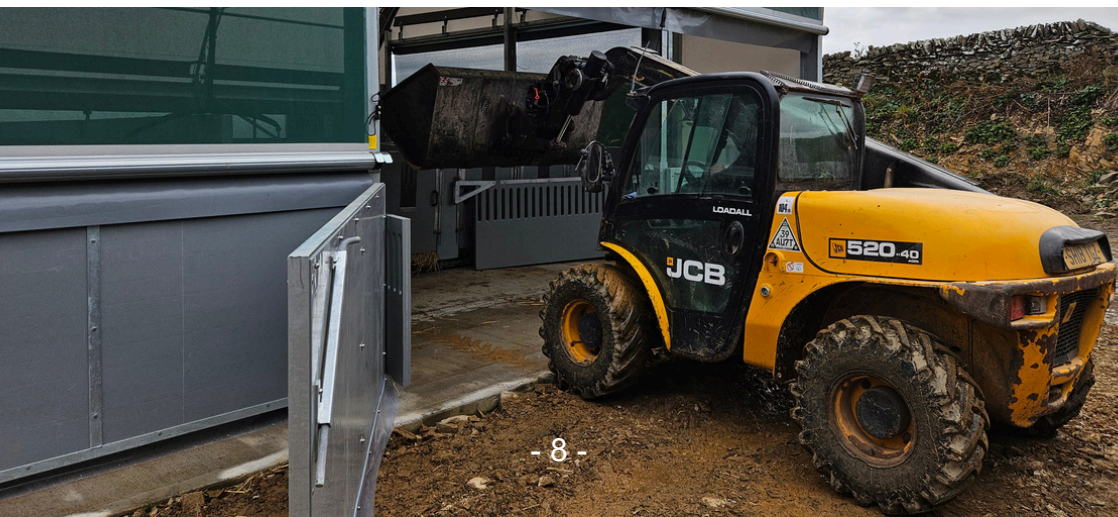
Pen Layout and Kitchen Storage: group pens are positioned around a central kitchen with feed storage and cleaning facilities. Individual pens are placed at either end of the building, with rear and front walkways allowing good visibility of all calves.

Drive in pen access is designed for easy and safe access for cleaning and bedding changes.

Pen Partitions* Pen partitions are made from durable plastic panels that are easy to clean, with a concrete upstand at the base for easy scraping out with machinery.

Auto Feeders* Programmed feeding curves with daily monitoring ensure calves receive the correct amount of milk, with notifications if they don't meet their requirements.

**The Galebreaker Calfhub can utilise a range of third party systems of your choice.*

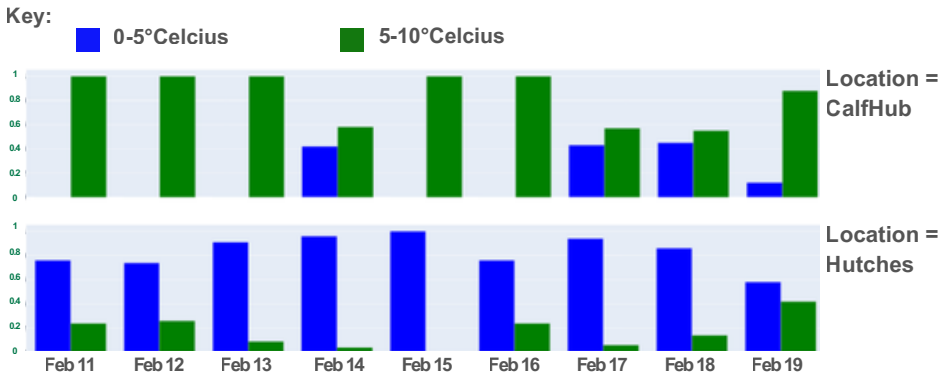


Proven Results

Tested during a 12-month independent trial undertaken by SRUC. During the CEVEC (Cost Effective Ventilated Environment for Calves) project, the Galebreaker CalfHub delivered numerous benefits when compared to hutch-based systems, with the same nutritional intake:

- Higher growth rates (150-250g per day)
- Improved respiratory health & lung scores
- Significant reduction in labour through system automation and monitoring (75% saving in daily labour time)
- Greater calf activity indicating improved welfare (25% increase in activity)
- Projected on-farm carbon reductions through improved calf/cow health and productivity - saving around 5% in carbon emissions.

Across all seasons, Galebreaker CalfHub maintained more stable and comfortable conditions than traditional hutch systems – reducing the impact of heat stress during hotter months and cold stress during colder months.



The graph indicates that calves in hutches are exposed to lower temperatures and must use additional energy to stay warm. This can slow growth and weaken the immune system, increasing the likelihood of diseases such as pneumonia and scours. Calves in the CalfHub system have a warmer environment which is further enhanced by the heat lamps.



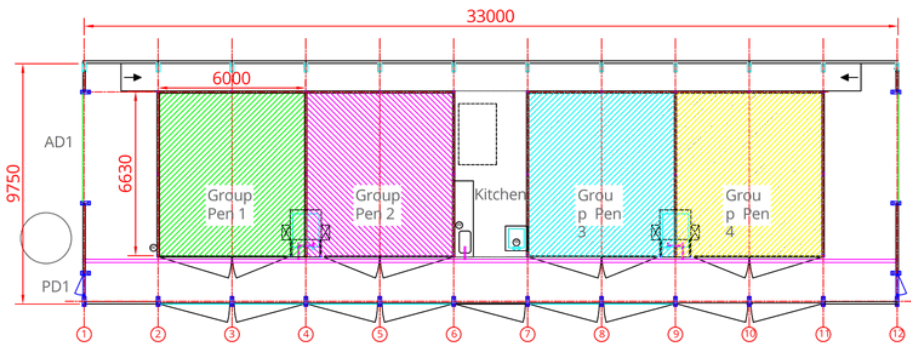
The Right Design For You

The Galebreaker CalfHub is a modular building, and our team works with you to determine the right size based on several factors, including:

- Calf numbers based on herd size and calving rate
- Stocking rates will determine space allocations based on industry standards
- Age at weaning will impact numbers of calves within your system
- We recommend resting each pen for 5-7 days between batches



The Galebreaker CalfHub is available in a 3, 4, 6 and 8 pen layouts accommodating calf numbers from 40 to 160, at one time.



Our sales team will talk through these considerations with you, as well as understanding your budget and the space available to agree the best design and layout.

Your Journey With Us

Galebreaker is a UK-based, family-run company allowing access to a single point of contact, who will support you through the entire project – we don't underestimate the investment you are making in your farm, and will be here to guide you through the process.

STAGE 1

Consultancy, Design and Planning – your Galebreaker contact will work with you to agree the design, layout and support you with drawings for planning submission. An outline cost will be provided.

STAGE 2

Detailed Design – following planning approval, Galebreaker will assign a Project Manager to confirm details such as groundwork contractors, third party equipment suppliers, utility connections, agree a timeline and final price.

STAGE 3

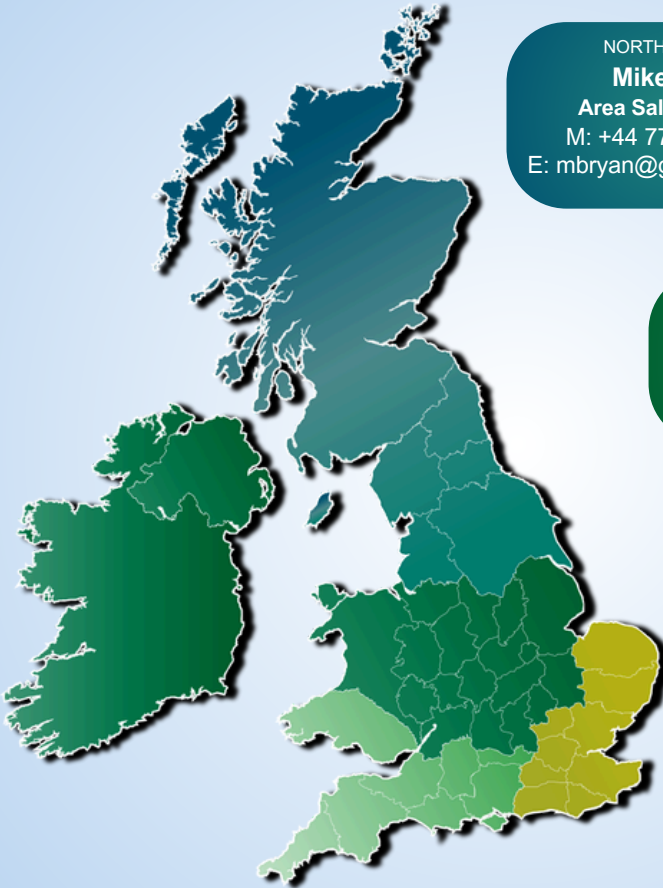
Construction – Galebreaker will oversee and manage your Project, keeping you updated throughout the build.

STAGE 4

Handover – in addition to Technical training on all new products, our Animal Welfare Team will support you while you embed your new CalfHub system.

Our experienced Sales Team are available to visit farm to discuss ventilation and weather protection solutions. Give us a ring Today.

Details of your Area Sales Manager can be found below.



NORTHERN AREA

Mike Bryan

Area Sales Manager

M: +44 7768 618 103

E: mbryan@galebreaker.com

MIDLANDS AND IRELAND

Matt Sellers

Area Sales Manager

M: +44 7827 772 659

E: msellers@galebreaker.com

EASTERN AREA

Will Johnson

UK & Ireland Agri Sales Manager

M: +44 7887 426 937

E: wjohnson@galebreaker.com

SOUTH WEST AREA

Tim Hackett

Area Sales Manager

M: +44 7435 945 383

E: thackett@galebreaker.com

EST. 1984

Galebreaker[®]
AGRI

01531 637900
marketsupport@galebreaker.com
galebreaker.com