



BUCKEYE BUILDS THE HOME,  
YOU BUILD THE MEMORIES.

**A available lot**

**S sold**

**M model**

**Spec Home**

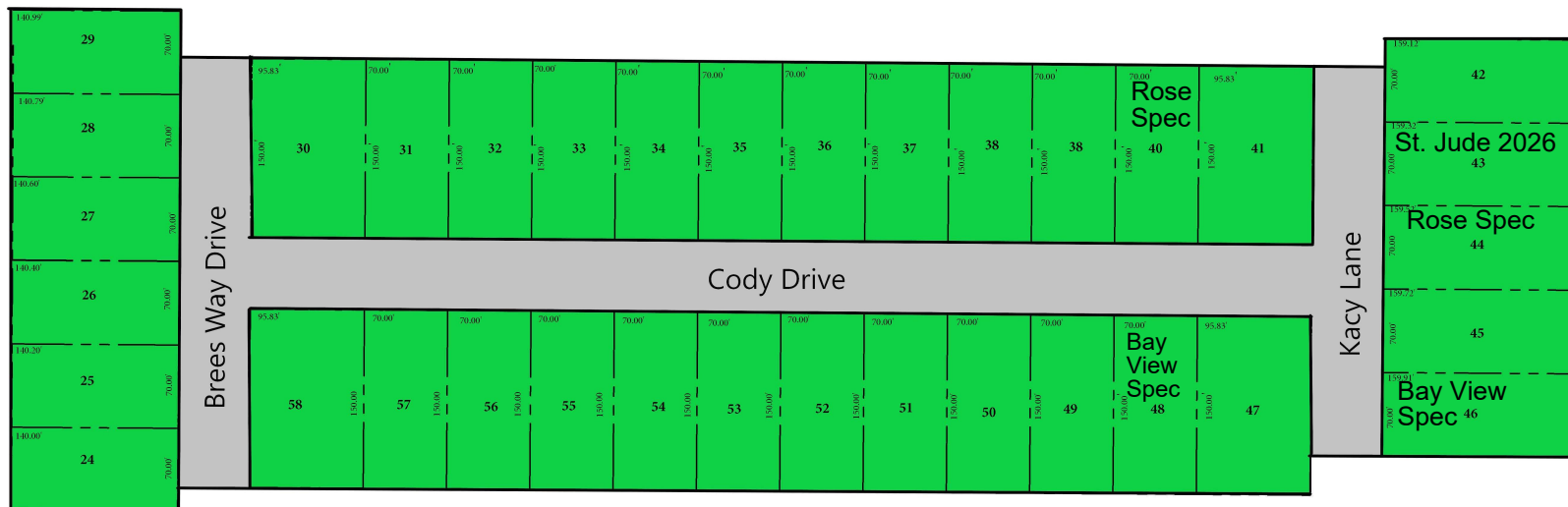
**R reserved**

**These Lots  
Won't Last!**



# Bay Meadow Estates - PLAT 2

Available Lots  
*Prices are Subject to Change*



419-843-2625

[www.buildwithbuckeye.com](http://www.buildwithbuckeye.com)

01 05.25

