

gpc family camp 2026

Roxmont includes Lake view Lodge, Lake View Cabins, Gibbes House

Roxmont 3-Night		Roxmont 4-Night		Roxmont 5-Night		Roxmont 6-Night	
Senior	\$415	Senior	\$553	Senior	\$692	Senior	\$830
Adult	\$495	Adult	\$660	Adult	\$825	Adult	\$990
Youth	\$245	Youth	\$353	Youth	\$441	Youth	\$530
Child 6-8	\$180	Child 6-8	\$240	Child 6-8	\$300	Child 6-8	\$360
Child 3-5	\$125	Child 3-5	\$166	Child 3-5	\$125	Child 3-5	\$250

Mid includes State Line, Chapel Line, College Row, Cottage F, Cabin Z, Tree Cabins, Malden

Mid 3-Night		Mid 4-Night		Mid 5-Night		Mid 6-Night	
Senior	\$355	Senior	\$473	Senior	\$592	Senior	\$710
Adult	\$425	Adult	\$567	Adult	\$708	Adult	\$850
Youth	\$225	Youth	\$300	Youth	\$375	Youth	\$450
Child 6-8	\$150	Child 6-8	\$200	Child 6-8	\$250	Child 6-8	\$300
Child 3-5	\$115	Child 3-5	\$153	Child 3-5	\$192	Child 3-5	\$230

Greene includes Dock Road, Pasture Line, Peat, Repeat, and Inn

Greene 3-Night		Greene 4-Night		Greene 5-Night		Greene 6-Night	
Senior	\$300	Senior	\$400	Senior	\$500	Senior	\$600
Adult	\$368	Adult	\$490	Adult	\$613	Adult	\$736
Youth	\$200	Youth	\$266	Youth	\$333	Youth	\$400
Child 6-8	\$125	Child 6-8	\$166	Child 6-8	\$125	Child 6-8	\$250
Child 3-5	\$110	Child 3-5	\$150	Child 3-5	\$185	Child 3-5	\$220

GPC Family Camp 2026

Treat yourself to a delightful three to six-night Winni Getaway at Geneva Point Center, where relaxation, adventure, and family bonding come together on the stunning shores of Lake Winnepesaukee. Imagine spending your days exploring scenic forest trails, kayaking on the peaceful lake, and trying out a variety of fun activities. With cozy accommodations and all meals taken care of, this multi-day escape is sure to create unforgettable memories for you and your loved ones.



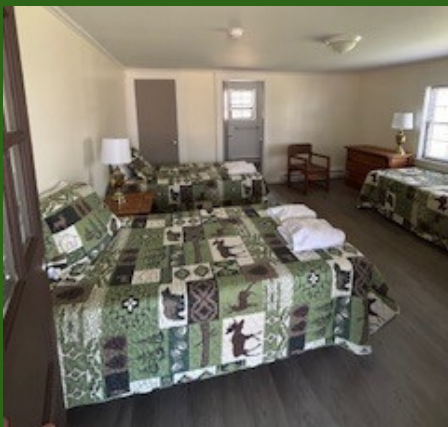
Disc Golf
Kayaks
Canoes
Trails
Swimming
Volleyball
Camp Fires
Ping Pong
Corn Hole
Board Games
Giant Jenga



Winni Scoops Ice
Cream Shop
Self Guided
Scavenger Hunt



Roxmont Housing



Four duplex-style cabins (2 rooms with shared screen porch per cabin) with Lake and Mountain views. Rooms have either 1 queen, 2 twins, or 1 queen and 1 twin and a trundle bed (2twins). All rooms have heat, a private bathroom and a shower,

Emily Gibbes House

Gibbes House's ten bedrooms are centered around a large common space with couches, a gas fireplace, and a kitchen. Each of the bedrooms has heat, carpeting, a bathroom and shower. Gibbes House is ideal for retreats, board meetings, club gatherings and family reunions.



Lake View Lodge

Lake View Lodge. Each of the Lodge's ten rooms offers a spectacular view of the lake and the Ossipee Mountains. The rooms have heat, a bathroom with a shower, a private entrance from the porch, and two double beds. Rollaway beds may be added in the rooms. The Lodge also has a common room with lake views and a small kitchen. Perfect for family reunions and individual stays!

Mid Housing



College Row

Six cabins with one set of bunk beds and a king or 2 or-3 twin beds, private bathroom or shower



Chapel Line

Eight cabins with heat, one bunk set and 2 twin beds, and a private bathroom and shower



Tree Cabins

Two duplex style cabins (4 units), each with one bunk set and 2 twins or one queen bed, private bathroom and shower.)



Stateline (not pictured)

Four private cabins with a queen bed and one bunk set with a cold water half bath and a private shower room next door.

Cottage F and Cabin Z (not pictured)

Four rooms with 2 twins, private bathrooms and showers and heat.



Malden

Four second floor rooms with either a double or 2 twins, heat and a shared bathroom and shower with 3 other rooms.



Greene Housing



Dock Road

Nine bunk houses. Each cabin has three built-in double bunks and one single bunk (seven beds total) and a cold water half-bath. Hot showers are available nearby in the Shower House.



Peat/Repeat

Two bunk houses. Each cabin has three built-in double bunks and one single bunk (seven beds total) and a cold water half-bath and heat. Hot showers are available nearby in the Shower House.



Inn

Nineteen rooms on the second floor of a historic boarding house-style Inn. Two twin beds or one double bed, a desk, and a small closet. A shared three stall bathroom and single shower stall is down the hall



Pastureline

Three cabins that can be separated into 2 rooms each. Front rooms have 2 bunk sets and a coldwater half bath. Back rooms have three bunk sets and a cold water half bath. Hot showers available at nearby shower house.