

## PROJECT GOAL

The goal is to turn one of Geneva Point's historic but least comfortable and seldom used buildings into one of our most requested and enjoyed accommodations.

## WHAT MAKES COTTAGE E SPECIAL

Situated on the corner of the green, just a few steps from Barn, Cottage E's location provides quick easy walking access to most of our key activity locations, without walking up and down the hill to and from the lower campus housing units. Cottage E also has an impressive vista up the green to the Winnepesaukee Inn.

## PROJECT ADOPTION GOAL



GPC's Board of Directors has set a goal to raise \$90,000 for the Cottage E Project by the end of August 2026.

## ADOPTION OPPORTUNITIES

Whole Cottage\* \$30,000  
Room\* (4) \$12,000  
Screened Porch\* (1) \$10,000  
Deck\* (1) \$10,000

Cottage E Supporter \$100 and up

Donors may receive tax benefits by making a donation to support this project at Geneva Point Center, a 501(c)(3) charity. Please consult your financial advisor to determine your tax benefits.

\*Acknowledgement plaque on exterior of the cottage, room, porch or deck. All Cottage E contributors will have the opportunity to help rename the building.

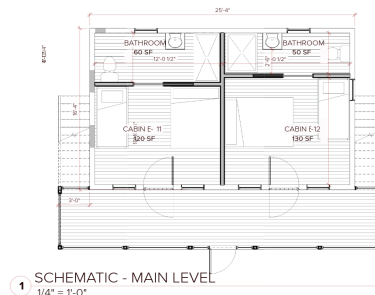
For more information about Cottage E Adoption Opportunities, visit the Cottage E page on our website, or contact Peter Claypoole at [pclaypoole@genevapoint.org](mailto:pclaypoole@genevapoint.org) or (603) 253-2066.



## COTTAGE E

In the early days of the Roxmont Poultry Farm, Cottage E, along with Cottage F, were moved from elsewhere in the Moultonborough area and placed next to Cottage A (known today as Shaw Cottage). Both Cottages E and F were lived in by workers who helped build the horse barn (which became the Winnepesaukee Inn), an incubator barn (where the Chapel now stands) and other structures that were needed for the poultry farm. Cottage E was eventually moved again to its current location at the end of the Green near the Barn, where it has served as an affordable summer accommodation for guests and staff ever since.

## RENOVATION PLAN



When the renovations are complete, the cottage will have four comfortable guest rooms, suitable for one to three guests. Each room will have a private bathroom and shower. A key part of the project will be the removal of the interior stairway to give each of the new rooms more space. New exterior stairs will provide access to the upper-level rooms. The original front porch will be screened in, and a new open-air deck will be added above it. The project also includes new windows and doors, a new roof, new siding, electrical upgrades, and all new furnishings.

By supporting the Cottage E Project, you will be part of restoring and improving a piece of Geneva Point's history and making it an even better part of GPC's future.



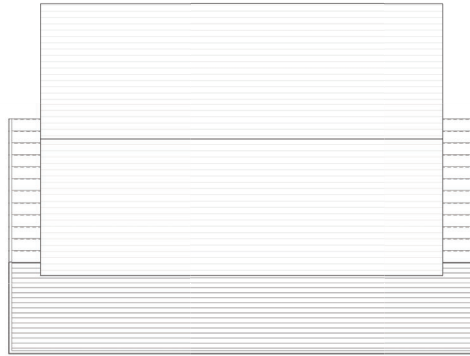
## Geneva Point Center Adopt-A-Cabin Program



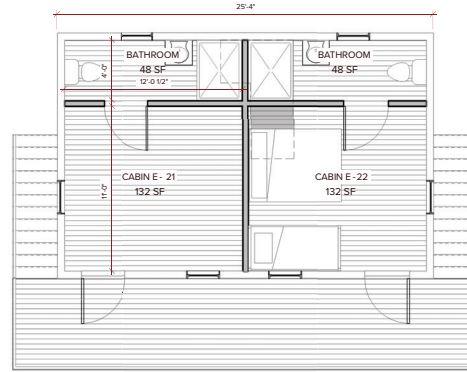
## Cottage E Project

*Another opportunity for friends of Geneva Point Center to make a difference by making a significant financial contribution to get an important project completed.*

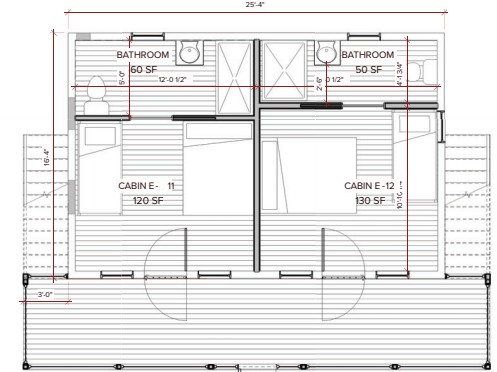
# Geneva Point Center



3 SCHEMATIC - ROOF RIDGE 3  
1/4" = 1'-0"



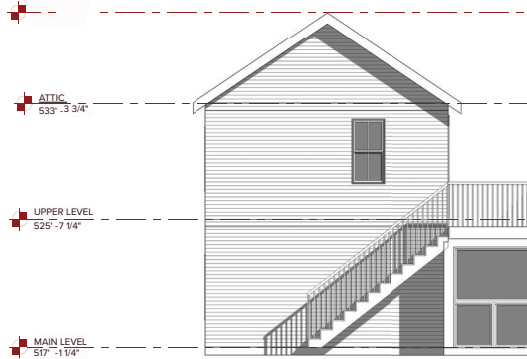
2 SCHEMATIC - UPPER LEVEL 2  
1/4" = 1'-0" ROOF RIDGE 539'-4 1/2"



1 SCHEMATIC - MAIN LEVEL 1  
1/4" = 1'-0"



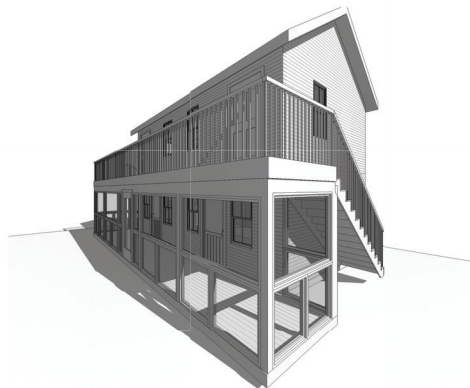
8 SCHEMATIC - PERSPECTIVE 2 OPTION 4



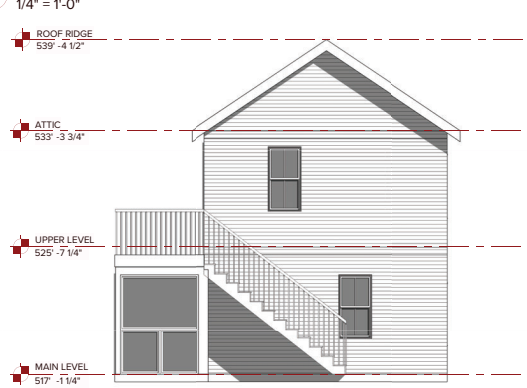
6 SCHEMATIC ELEVATION - EAST  
1/4" = 1'-0"



4 SCHEMATIC ELEVATION - NORTH  
1/4" = 1'-0"



9 SCHEMATIC - PERSPECTIVE 2 - OPTION 4



7 SCHEMATIC ELEVATION - WEST  
1/4" = 1'-0" 6 5



5 SCHEMATIC ELEVATION - SOUTH  
1/4" = 1'-0"

Cottage E Project Target Completion Summer 2028