



# ANNUAL REPORT

TE PŪRONGO Ā TAU  
2024 – 2025



Mere Rikiriki – Craig Kawana





Hui-ā-Iwi Expo 2025





# TABLE OF CONTENTS

01

## MOEMOEĀ & VALUES

|                         |   |
|-------------------------|---|
| Moemoeā, Whāinga .....  | 2 |
| Ngā Uara – Values ..... | 3 |

02

## BOARD & STAFF REPORTS

|                                  |    |
|----------------------------------|----|
| Tiamana Report .....             | 4  |
| Kaiwhakahaere Matua Report ..... | 7  |
| Ngā Tangata ā te Rūnanga .....   | 11 |
| Taumata Hou .....                | 15 |

03

## 2024–2025 IN REVIEW

|                             |    |
|-----------------------------|----|
| Acknowledgements .....      | 18 |
| He Maimai Aroha .....       | 20 |
| 2024–2025 at a Glance ..... | 21 |
| Social Media Report .....   | 22 |
| Website Analysis .....      | 23 |
| Ngā Pou o Rangitāne .....   | 25 |
| He Aho Tangata .....        | 26 |

04

## ROMCT

|                                      |    |
|--------------------------------------|----|
| Ngā Uara – Values .....              | 28 |
| Whakamarama, Moemoeā & Whainga ..... | 29 |
| Tiamana Report .....                 | 30 |
| Ngā Tangata ā te Rūnanga .....       | 33 |

05

## WHĀNAU

|                                |    |
|--------------------------------|----|
| Whānau Feedback .....          | 36 |
| RoMST Entities Structure ..... | 37 |




# *Moemoeā*

## **Rangitāne kia Angitu!**

Striving to excel  
toward

### **Rangitānetanga**

Rangitānetanga was handed down by our tūpuna and is to be passed on to our mokopuna. It defines who we are and what we want to become.



**WHĀINGA**  
**Tē riro taku**  
**pikihuia,**  
**ko taku tū, ko**  
**tōku reo,**  
**ko aku tikanga,**  
**kia Rangitāne**  
**ake nei te eke**

The mission of Rangitāne o Manawatū Settlement Trust is to work with our whānau and hapū so that our heritage will be preserved, celebrated and sustained in the future.



# KO NGĀ UARA

## MAURI

### RESPECT & HUMILITY

Mauri acknowledges the interconnectedness of all life, reflected in how we interact with others. By being humble, we honor the mauri of others, understanding that no one being is greater than another.



## WAIKUATANGA

### SPIRITUALITY

Like our tūpuna, Rangitāne o Manawatū Settlement Group acknowledges a source of power greater than our own. We will embrace our role of kaitiaki of the natural environment and for the wellbeing of our people.



## MANA TANGATA MANA WHENUA

### EMPOWERMENT OF PEOPLE & LAND

We are inseparably connected to our land and waterways. We will exercise our jurisdiction over our whenua and waterways for the well-being and empowerment of our whanau, hapū and iwi.



## NGĀKAU PONO, NGĀKAU AROHA, NGĀKAU TIKA

### APPROACHABLE, TRANSPARENT, ACCOUNTABLE

We will promote best practice in all we do to create confidence and trust. We are available to our people when needed and will lead by example in the examples set by our tupuna.







## **Tēnā koutou e te whānau whānui o Rangitāne o Manawatū,**

As Chair of the Rangitāne o Manawatū Settlement Trust, I'm proud to reflect on the breadth of mahi our Trust has undertaken in recent months, and to share a forward-looking view aligned with our strategic pou:

## **TIAMANA REPORT**

George Davis

### **Governance & Leadership**

I want to begin by acknowledging the appointment of Roly Fitzgerald as our Deputy Chair. His steady leadership and deep understanding of our kaupapa continue to strengthen our board and the work we do collectively. To our trustees—Craig Kawana, Fiona Kale, Nuwyne Te Awe Awe Mohi, Rahera Hapi Moresi, and Roly Fitzgerald—your insight, courage, and commitment are the backbone of our governance. Everyone contributes a distinct perspective and experience, collectively representing the strength of your whānau, hapū, iwi, hāpori and our organisation. Your mahi reflects the whakataukī: "Ehara taku toa i te toa takitahi, engari he toa takitini" — My strength is not that of a single warrior, but that of many. This speaks to the way you uphold the mana of Rangitāne o Manawatū—not through individual effort, but through shared wisdom, unity, and purpose.

### **Rangitāne Tūrangawaewae – Our Place to Stand Together**

Our visibility and presence across the rohe continues to grow. The ROMST hub at Taumata Hou remains a vital anchor for our operations and engagement, and we are actively strengthening formal partnerships with local councils, Crown agencies, and our other Rangitāne entities within our Rangitāne ecosystem. Our social media reach has expanded significantly, with increased engagement across platforms helping to amplify our kaupapa and connect with uri near and far.

Planning for Hui ā Iwi is well underway, promising a major milestone in collective engagement and storytelling. The delivery of the Puanga exhibition and renovations to Te Uru Karaka shed further reinforce our commitment to cultural infrastructure and visibility.





# TIAMANA REPORT

George Davis

## Rangitānetanga – Prominent in the Lives of Our People

We were proud to confirm the appointment of Taihākurei Durie and Melissa Albert-Marshall to the Kaimatakitaki roles. These positions are vital to nurturing cultural leadership and creating meaningful opportunities for whānau to grow in confidence and capability. Their presence will help ensure our tikanga remains active, visible, and intergenerational.

Our Reo Revitalisation Strategy continues to flourish, with monthly wānanga, seasonal intakes, and rangatahi-focused initiatives endorsed by the Board. Planning is underway for a rangatahi wānanga in October, alongside the development of digital resources and online access to our Rangitānetanga. These efforts support the wider implementation of Poupoua Toi and the advancement of our education pathway.

## Our People – Healthy and Thriving Whānau, Hapū, Iwi

Under the stewardship of Debbie Te Puni our Kaiwhakahaere Matua and her dedicated team, our operational arm has delivered practical outcomes with precision and care. From kaumātua outreach and grant distribution to biodiversity initiatives and cultural property renovations, their mahi ensures our strategic vision is translated into tangible benefits for our people.

We continue to build on what we have, with a bona fide focus on empowering our whānau through education, housing, kai security, and leadership development. Our commitment to Te Tiriti partnerships remains strong, ensuring Crown entities uphold their obligations while we pursue new opportunities that align with our values and aspirations.





# TIAMANA REPORT

George Davis

## Developing Our Economy – Prosperity for Our People

We formally acknowledge the retirement of Matua Ruma Karaitiana as Chair of RoMIT, effective December 2025. His leadership has laid a strong foundation, and we are committed to a respectful and strategic recruitment process.

Our economic strategy continues to evolve, with active partnerships being explored through CEDA and other regional entities. We are scoping opportunities for micro-business incubation, collective ventures, and increased presence in the local economy. Investment frameworks are being monitored closely, and we remain focused on growing our landholdings and building both tangible and intangible assets for future generations.

## Environment – Preserving and Caring for Our Taiao

Environmental stewardship remains a cornerstone of our mahi. The appointment of Kahurangi Hapi Tangaroa as Pou Taiao has strengthened our capacity to engage in biodiversity planning, climate response, and conservation partnerships. We continue to work closely with DOC, Horizons, and Massey to manage cultural settlement assets and restore ecological balance.

Ongoing site monitoring reflect our commitment to healthy waterways and ngahere revitalisation. We are also exploring education grants and mentoring pathways to grow Rangitāne capacity in the environmental space, ensuring our whānau remain connected to whenua and awa.

---

E te iwi, our mahi is grounded in kaupapa and driven by collective aspiration. I remain humbled by the dedication of our trustees, kaimahi, and whānau who continue to breathe life into our vision. As we look ahead, our focus remains clear: to uphold the mana of Rangitāne o Manawatū, protect our taonga, and create enduring opportunities for our uri. Together, we walk forward—guided by our tūpuna, united in purpose, and determined in our pursuit of angitū.

*Ngā manaakitanga,*

*George Davis*

*Chairperson Rangitāne o Manawatū Settlement Trust*





**“Ehara taku toa i te toa takitahi, engari he toa takitini -**

*My strength is not that of an individual, but that of the collective.”*

## Te Rīpoata ā-Tau o te Kaiwhakahaere Matua | CEO Report 2024–2025 - *Debbie Te Puni*

Tēnā koutou katoa e te whānau, e ngā hapū, e te iwi o Rangitāne o Manawatū.

The 2024–2025 year has been one of growth, reconnection, and reflection — a time in which we have strengthened our foundations, deepened relationships, and navigated significant shifts across the motu. As your Post-Settlement Governance Entity, our purpose remains clear: to advance iwi aspirations, uphold the mana of our tūpuna, and build enduring opportunities for our mokopuna.

### **He Hononga ki Te Tiriti**

We have continued to anchor our mahi in Toitū Te Tiriti, recognising the enduring promise of Te Tiriti o Waitangi as the foundation of our engagement with Crown and local authorities. The current political climate has brought new challenges, with tightening funding environments and shifting policy settings that directly affect iwi and hapū. As local body elections approach in 2025, we are preparing to ensure that the voice of Rangitāne remains strong in these spaces and that our rights to whenua, wai and decision-making are upheld. Our advocacy remains focused, deliberate and values-driven.

### **Ngā Huringa Nui – Significant Transitions**

This year, iwi Māori across Aotearoa acknowledged the passing of Kīngi Tūheitia Pōtatau Te Wherowhero VII, June 2024 — a moment of deep aroha and collective reflection. The extraordinary display of unity and solidarity from iwi Māori during his tangihanga spoke to the strength of his legacy and the shared commitment to kotahitanga. In the months that followed, we welcomed the leadership of Kuini Ngāwai Hono Te Atairangikaahu II, whose vision signals both continuity and renewal for te ao Māori.





### **Whakatupuranga – Growth, Opportunity & Collaboration**

Throughout the year, we saw the continued growth of our iwi register, reflecting more whānau reconnecting with Rangitāne whakapapa and engaging in kaupapa. Our kaumātua were supported through grants and winter packs, while rangatahi and whānau accessed learning opportunities through scholarships, wānanga and cultural programmes. Hui ā Iwi and our Waitangi Day commemorations once again brought our people together in large numbers, celebrating our identity and collective strength.

New collaborations with local and national organisations, councils and agencies have opened exciting pathways in tourism, arts, education and taiao. These relationships reflect the increasing visibility and influence of Rangitāne in shaping regional development. Major kaupapa such as the Māra Kai wānanga, the mau rākau programme, the Diabetes hauora initiative, and the launch of our waiata resource have strengthened whanaungatanga and cultural expression across generations. Artistic leadership flourished through He Aho Tangata and the Puanga Exhibition, while our tohunga whakairo ensured our tikanga continues to be reflected in taonga and public spaces.

On the whenua, our taiao kaupapa continued to grow. Biodiversity projects at Moutoa and Pohangina, planting of pā harakeke, and extensive restoration activities have affirmed our kaitiakitanga. Progress was made at Kikiwhenua alongside PNCC and RACE, and at Te Uru Karaka in partnership with Massey University, while our active role in the governance of Te Motu o Poutoa remains strong.

### **Pou Tahua – Financial Overview**

Our financial position remains strong and stable, reflecting both prudent investment management and a deliberate focus on kaupapa delivery. Total income for the year was \$432,773, while total expenses were \$1,041,742, resulting in an operating deficit of \$623,349. This figure is the outcome of a planned investment strategy that prioritised te reo Māori revitalisation, education, taiao, cultural redress, whānau engagement and internal capability.

Importantly, we closed the year with approximately \$300,000 in cash reserves, demonstrating sound liquidity, and we received a \$510,000 loan repayment from Rangitāne o Manawatu Investment Trust – a clear signal that our investment base continues to provide a reliable financial foundation. Total equity at 30 June 2025 was \$11.56 million, giving us both strength and flexibility for the future.

We also made solid progress on key commercial projects: Tangimoana Forest harvesting and replanting continued, Hokowhitu subdivision sales advanced, the Ranfurly social housing project moved forward, and the Police Station car park development was prepared for tender. These initiatives are designed to build intergenerational wealth and provide ongoing revenue streams to sustain iwi aspirations.

Looking ahead, we will continue to manage our resources carefully, balancing kaupapa delivery with financial responsibility, and ensuring that every dollar spent is an investment in the wellbeing and future of Rangitāne.



**“Ko te pae tawhiti  
whāia kia tata, ko te  
pae tata whakamaua  
kia tina.”**

*“Seek out distant  
horizons and  
cherish those you  
attain.”*



### **Pou Tangata – Our People**

At the heart of our progress are our people. Kaumātua, rangatahi and whānau have been supported through grants, sponsorships, learning opportunities and hui. Our internal systems have also been modernised to improve engagement and communication. Behind the scenes, our Taumata Hou team has shouldered a significant operational load, ensuring that grants are processed, events run smoothly, governance is supported, and systems continue to evolve as our organisation grows. Their mahi is the quiet but vital backbone of our progress.

### **Takutai Moana (MACA) Claims**

This year has also marked an important milestone in advancing Rangitāne’s takutai moana claims. Under the guidance of legal counsel Chris Findlayson, we have continued to progress our applications for customary marine title and protected customary rights. This mahi strengthens our position as kaitiaki of our coastal environment, ensuring our customary interests are recognised in future decision-making and environmental management.

### **Ngā Wero – Challenges and Realities**

Growth brings both opportunities and responsibilities. The changing political landscape, increased environmental pressures, and the complexity of multiple kaupapa require us to plan carefully, strengthen governance, and invest in the right capacity to support iwi aspirations. The dedication of our people – from trustees to kaimahi to whānau – remains our greatest strength in meeting these challenges.

### **Te Tiro Whakamua – Looking Ahead**

Although there are no elections this year, preparations are already underway for the 2026 hapū elections for Ngāti Mairehau, Ngāti Rangitepaia and Ngāti Kapuarangi. This is an opportunity to deepen engagement, strengthen hapū structures, and ensure that our governance reflects the aspirations of our people. In the year ahead, we will continue to embed te reo Māori across our operations, grow partnerships in tourism, arts, education and taiao, and advocate strongly for iwi rights in local government and national forums.

### **He Whakakapi – Closing Words**

This year has been a time of strengthening – of whakapapa, taiao, cultural expression and organisational capacity. We have honoured the legacies of those who came before us and prepared the ground for those yet to come. None of this is achieved alone. It is the result of collective effort – trustees, kaimahi, hapū, partners and whānau moving forward together with shared purpose.

**Ngā manaakitanga**

**Debbie Te Puni**

**Kaiwhakahaere Matua**





## Hui-ā-Iwi Expo 2025

Monrad Students performing  
kapa haka





# NGĀ TANGATA Ā TE RŪNANGA

Rahera Hapi-Moresi  
*Ngāti Rangiaranaki*

Tēnā tatou e te Whānau o Rangitāne.

I would like to start by acknowledging the leadership and commitment of Danielle Harris who before standing down last year, held a position as the Ngāti Tauira trustee since the inception of the Settlement Trust and who also held the position of Chair for consecutive terms. Danielle, you have been a strong advocate for Rangitāne iwi and had an unwavering belief in the strength and potential of our people. Thank you for your ongoing, dedicated service to our iwi.

This year we welcomed Craig Kawana as the representative for Ngāti Tauira. Craig is committed to the success of our iwi and with his wealth of knowledge and lived experience, he adds another layer of skill and value to our Settlement Trust.

One of my highlights this year was attending a Ngāti Tauira hapū hui coordinated by Craig Kawana. The hui included a morning with Pā Peter Te Rangi sharing stories of whakapapa links. For me, it was wonderful to hear stories of Mererikiriki, my great, great grandmother Panga Te Rangi and Mangawhata, where my Mum was raised.

Another highlight for me was attending the opening of the Te Ahu a Turanga highway. Having participated in the haerenga to Wellington the year before to sight the original Deed of Sale of this block, and the dawn karakia for mahi toi created by Warren Warbrick that marks an entry/exit point of the highway, it was wonderful to be part of this auspicious occasion alongside other members of our uri.

This has been a year of achievement and advancement for our iwi. Our Investment Trust and Cultural Trust along with our team at Taumata Hou are thriving as they continue to connect with whānau and create spaces to learn, grow, and develop, together. Thank you all for the amazing mahi you do team.

*‘Kia uru kahikatea te tu’.*





## NGĀ TANGATA Ā TE RŪNANGA

Fiona Kale

*Ngāti Kapuārangi*

Kia ora e te whānau. Ko te tumanako, ka piki te ora tātou katoa.

It is remarkable that as 2025 draws to a close and I look back, that our Trust has experienced significant momentum in the mahi undertaken throughout the year. The departure of long serving Trustees since I began in 2024 has often left me feeling both excited for the road ahead but also contemplative; can we maintain continuity? can we inspire new connections? can we deliver on expectations? and last but not least can we actually make a difference?

Iwi mahi is complex. Relationships have a tendency to be hit or miss but the privilege of being guardians of the Settlement, making good decisions and giving of my best makes me grateful and inspires me to push on.

There has been increased participation by the whānau at events hosted by the Trust, and it is always lovely to catch up on occasions other than Tangihanga. We hope you can make time to come and see how things are going. Many of our Ngāti Kapuārangi whānau also have strong whakapapa links in other Rangitāne hapu and so we get the benefit of staying actively connected.

Finally, a note of huge appreciation to the team at Taumata Hou. Lead by Debbie Te Puni thank you for all that you do for the Board. I especially appreciate the work that goes into preparing our meeting papers. As most of you know I usually have lots to say, and I always appreciate the discussions that follow.

I am looking forward to working with you all in 2026.

Nuwyne Te Awe Awe

*Ngāti Rangitepaia*

E ngā mana,

e ngā reo,

e ngā karangatanga maha,

e ngā ringa raupā o tā mātau iwi o Rangitāne, tēnā rā tātau katoa.

Ki ngā mate huhua o te tau, haere atu rā, hoki atu ki te kainga tūturu o tātou te iwi Māori.

Rātau te hunga mate ki a rātau, tātau te hunga ora ki a tātau.

No reira tēnā tātau katoa.

Kua tatū mai nei mātau ki tēnei pito kōrero o te hapū o Rangitepaia

Over the past year, significant progress has been made in various areas. As the Mangai for Rangitepaia, I have deepened my understanding of our iwi and the extensive work that ROMST does within our iwi and the hāpori o Pamutana.

I have enjoyed bringing my community development and regional development skills into this role, ensuring that meaningful relationships and partnerships are upheld and maintained. I am also focused on succession planning and developing future leadership for our hapū. We have a vast knowledge base within our iwi and many initiatives that whānau can connect with to grow their Mātauranga Māori / Mātauranga Rangitāne.

While there is still progress to be made, I am excited to see the growth within the Settlements Trust and the new ways we are working together.

*‘Hei konei, hei kona’*





## NGĀ TANGATA Ā TE RŪNANGA

Craig Ropiha Kawana  
*Ngāti Taurira*

Roly Fitzgerald  
*Ngāti Hineaute*

Kia ora tātou ngā whānau whānui o Rangitāne.

I feel very privileged to be sitting on the Ngāti Taurira hapū seat, representing my whānau and those who whakapapa to this hapū. This is a new field for me as I learn the formal structures and responsibilities of being a RoMST trustee, though it has been an exciting journey to undertake. As a hapū we have been holding hui every couple of months, where the whānau have asked to learn more about our shared history and whakapapa together. This has only been possible with the awahi of mātua Peter Te Rangī, he mihi nui ki a koe mātua, nāna te mātauranga me te tautoko mō tēnei kaupapa. Peter's wealth of knowledge and skill as an orator came to the fore on our Ngāti Taurira historical hikoi, where he shared with us the depth of his mātauranga. Ka nui te mihi hoki ki a Debbie Te Puni and the wonderful team at the RoMST/Taumata Hou office. You all do an awesome job informing our people and keeping them in touch, as well as providing whānau with opportunities.

Kia ora tātou

Another busy year as the Settlement Trust continues to flourish amidst continued growth and expansion of iwi matters for Rangitane. Bearing the responsibility of our Post Settlement Governance Entity. Rightly so all matters and formal relationships with, for and on behalf of Rangitane belong at the ROMST tepu, where all Rangitane whānau are represented via our Hapū Trustees. Thus it cannot be stressed enough the high level management of the Trust's affairs we receive from Debbie, Georgia and the wider Taumata Hou team, nei ra te tino mihi. Not to forget our many whanaunga in supported roles holding the pen for the many projects that align with the Trust's Strategic Priorities, no reira kia kaha ai tātou kia koutou ma. Finally, as we look to winding up yet another year of growth for the Settlement Trust, we also look forward to the coming together of all Rangitane at this years Ahurei hosted by our Wairau whanaunga. Otirā rātou kia rātou, tātou kia tātou, kia manawanui mai.







## Taumata Hou

Georgia Larkins-Tareha

*Kaitautoko*

Ko Rangitepaia te hapū  
Ko Georgia Larkins-Tareha tenei

Tēnā koutou e te iwi,

Firstly, I would like to thank Debbie Te Puni for her leadership. I will forever be grateful for the opportunity to work, learn, and grow, both as an individual and as part of our Taumata Hou team alongside Debbie. Her unwavering dedication to Rangitāne o Manawātū uri is nothing short of inspirational.

As part of the operational team at Taumata Hou, my mahi is varied, I am most proud of the opportunities available to tautoko our uri in different ways. Through our sponsorship, we see our uri flourishing in the community, their achievements are a powerful reflection of their determination, talent, and the mana they carry.

This year has been one of exciting growth and meaningful connection. We have been on inspiring Haerenga, from celebrating our talented whānau on stage, to hearing valuable kōrero and witnessing stunning mahi. These journeys have given us all the opportunity to connect more deeply through shared experiences.

I am truly proud to be part of the mahi and the growth within our Cultural Trust. I have learnt so much from our trustees and our Pou Taiao. I hold deep respect for the mātauranga and pūkenga each trustee brings and shares, and I am excited to see and be part of the continued development.

It has been a full-on year with many highs and plenty of learning. I look forward to the year ahead and all it holds.

Mauri ora

Māhina Scott-Kawana

*Kaitautoko*

Kia ora e te iwi,

Ko Māhina Tautoki Te Matai Scott-Kawana ahau.

Over the past year as Kaitautoko, I've been fortunate to work across a wide range of kaupapa that reflect the strength and creativity of our iwi. From coordinating our second Puanga Exhibition and facilitating the He Aho Tangata arts collective, to supporting our Hui-ā-Iwi, wānanga, and daily comms, it's been a year full of meaningful connection and busy hands. I've also helped move forward the renovation of our carving shed at Te Uru Karaka, supported the early stages of our cultural hub plans, and continued to write funding applications that support both the practical and aspirational needs of our people.

One space I'm especially looking forward to growing in is the iwi-led tourism strategy, supporting RoMST's involvement in this collaborative mahi and helping to shape how we share our stories with the wider world, on our own terms. To the Taumata Hou team, thank you for the shared laughs, long hours, and kaupapa-driven energy, and to Debz, for your grounded leadership and genuine care for the kaupapa at hand. It's also been a joy to welcome new kaimahi into the team this year, each bringing their unique whakaaro and adding to the mauri of our tare.

Ngā mihi nui, Māhina



## Kahurangi Hapi-Tangaroa

### *Pou Taiao*

Kia ora, my name is Kahurangi, and I am the appointed Pou Taiao for ROMST. My passion is for Te Wao nui a Tāne and all things that exist within his domain, both physical and non-physical. It is these aspects that guide me to do my absolute best within Te Taiao as a representative for my people and a care taker of our whenua.

For the past five years, I have been immersed in the environmental space, building my mātauranga across the health of our ecosystems, pest control, plant and manu identification, the handling of mokomoko, planting, and biodiversity enhancement planning. As a mokopuna of Rangitāne o Manawātū, I carry a deep responsibility to uphold this role with humility, always seeking the guidance of our kaumātua.

A critical part of this mahi is building strong, effective partnerships. We are fortunate to have the support of both the Department of Conservation and Horizons Regional Council. DOC has been instrumental in supporting our on-the-ground efforts with resources like traps, while Horizons has provided vital legislative reports, guidance, and backing for our biodiversity assessments. These relationships are fundamental to turning our environmental aspirations into tangible action.

My core aspiration is to see our whānau actively contributing to this mahi. By enhancing the health of our properties and restoring them as close as we can to their natural state, we do more than just ecological work. There is much to be done, and I look forward to the day our people are fully reconnected to their whenua and being involved in the projects we are advancing for biodiversity on our land and in our waterways.

## Marama Lobb

### *Paemātauranga Co-ordinator*

Tēnā koutou e ngā uri o Rangitāne o Manawātū.

This year marked the establishment of my role as the Pae Mātauranga Coordinator within Taumata Hou. My focus has been on laying strong foundations for our mātauranga kaupapa by building relationships with whānau and kura, understanding current needs, and helping to shape the long-term direction of this space.

Across 2024-2025, we held a series of Mātauranga wānanga as part of our Whānau Engagement Project with the Ministry of Education, and connected with whānau at key iwi events to gather insights about their experiences in education. These kōrero have helped us better understand the factors that influence attendance and engagement and have guided the early development of our priorities.

Te reo Māori revitalisation also continued through the mātauranga space. Tai Huki delivered reo initiatives throughout the year, including Paepae Rau, Reo Rau, and Punaōhi Rau, providing structured opportunities for whānau to strengthen their reo capability and cultural connection.

Rangatahi engagement has begun to grow through hui that create opportunities for young people to connect, share their perspectives, and contribute to iwi kaupapa in meaningful ways.

As this was my first year in the role, my mahi has centred on establishing strong foundations, nurturing relationships, and creating the conditions for future initiatives that support our tamariki and rangatahi to feel confident, connected, and supported in their learning. I look forward to the continued growth of the mātauranga and reo revitalisation space into the future.

Ngā manaakitanga,  
Marama Lobb









# ACKNOWLEDGEMENTS

**He mihi tēnei nāku, te Kaiwhakahaere Matua mō Rangitāne o Manawātū, ki a koutou katoa e kawē ana i te kaupapa nei.**

As Kaiwhakahaere Matua, it is a privilege to acknowledge the many hands, hearts, and minds who make the mahi of Rangitāne o Manawātū possible. Our progress is the result of shared effort — from our Trustees and kaimahi to our pou, cultural leaders, partners, and whānau.

This mihi is offered in gratitude to all who contribute their time, skills, and aroha to our kaupapa. Every action, whether seen or unseen, helps strengthen our iwi and carry our waka forward.



## Trustees and Leadership

With great appreciation from myself, acknowledgements go to our **Settlement Trust Trustees** – Roly Fitzgerald, Fiona Kale, Nuwyne Te Awe Awe Mohi, Rahera Hapi Moresi, and Craig Kawana – for your steady governance, wisdom, and dedication.

A special mihi to our **Chair, George Davis**, whose whānau-focused, te ao Māori approach has kept our mahi grounded in whanaungatanga and manaakitanga.

Ngā mihi nui to our **kaimātakitaki (observers)** – Taihakurei Durie and Melissa Albert – who bring fresh perspectives and help nurture the next generation of leadership.

He mihi aroha tēnei ki a koutou ngā **kaimahi o Rangitāne o Manawātū Settlement Group**. You are the heartbeat of our rūpū – the ringa raupā and ngākau aroha that bring our kaupapa to life every day. I thank the **Taumata Hou team** for your tireless mahi behind the scenes, keeping the heartbeat of the Trust strong and steady.

The dedication of our **Cultural Trustees** – Warren Warbrick, Peter Te Rangi, Charles Matenga, Kahurangi Hapi Tangaroa, and Kararaina Te Puni – whose leadership ensures our kaupapa remain grounded in tikanga and enriched by both mātauranga Māori and Western knowledge, has been invaluable.





# ACKNOWLEDGEMENTS



## Trustees and Leadership

Many thanks are also due to the **Rangitāne o Manawatū Investment Trust (RoMIT) Trustees** – Roly Fitzgerald, Te Ariki Te Puni, and Alexia McEwen – for your careful stewardship of iwi assets, safeguarding prosperity for future generations.

**A special mihi to Matua Ruma Karaitiana**, one of our inaugural RoMIT Trustees, who retires this year. Matua Ruma's wisdom, steady guidance, and unwavering commitment have been instrumental in shaping the financial foundations of our iwi. His legacy will continue to guide us as we carry his vision forward.

Sincere gratitude is also extended to the **Pae Mātauranga Advisory Group** – Meihana Durie, Hinemoana Durie, Debi Marshall-Lobb, and Hohepa Isaac-Sharland – for your expertise and passion in supporting our rangatahi and whānau to thrive.

Recognition must also be given to our **Whakapapa Komiti** – Peter Te Rangi, Charles Matenga, and Kararina Oldridge – for your vital mahi in maintaining whakapapa integrity and protecting the iwi register.

To the **He Aho Tangata rūpū**, who bring Rangitāne artistry into public spaces – I thank you for ensuring our culture is seen, celebrated, and carried forward with pride.

## Whānau and Collective Strength

Above all, heartfelt thanks to our whānau. Your aroha, trust, and participation guide every kaupapa. You are the wind in the sails of this waka. Together, we continue to move forward – grounded in our tikanga, inspired by our tūpuna, and united by the aspirations of our mokopuna.





# He Maimai Aroha- Honouring our loved ones

Each year we pause to acknowledge those of our whānau who have passed on.

*Moe mai rā e ngā mate, e okioki ai i roto i te rangimārie.*

*Haere, haere, haere atu rā.*

Though their voices are stilled, their wairua, wisdom, and aroha remain with us – in our kōrero, our whenua, and the guiding values of Rangitāne o Manawatū.

Their legacy endures in the aspirations we carry for our mokopuna. We extend aroha to their whānau, holding fast to treasured memories while looking to the future in their light.



Tamara Governor

*“Kua hinga te  
Tōtara i te  
Waonui a Tāne”*



Ange Smith



Lorimer Governor



Rangi Fitzgerald



# 2024 – 2025: At a Glance



## Whānau & Membership

- Registered beneficiaries grew from 621 → nearly 800.
- 40+ kaumātua supported with grants and winter packs.
- Ngā Tini Whetū scholarships and rangatahi sponsorships delivered.



## Taiao & Whenua

- Biodiversity projects at Moutoa & Pohangina
- Mekomoko monitoring, new pā harakeke, and thousands of trees planted
- Progress at Kikiwhenua with PNCC and RACE
- Developments at Te Uru Karaka with Massey University
- Active involvement in Te Motu o Poutoa governance and planning



## Finance & Development

- Tangimoana Forest harvesting and replanting continued
- Hokowhitu subdivision sales progressed
- Ranfurly social housing project underway
- Police Station car park development out for tender



## Kaimahi Appointments

- **Pou Tikanga** – Navarone Winikerei Watson
- **Kaitakawaenga** – Jeanette Te Rangi
- **Pou Taiao** – Kahurangi Hapi Tangaroa



*Rangitāne o Manawatu  
Settlement Trust*



## Events & Engagement

- **Hui-ā-Iwi August 2024** – 30+ attendees
- **Hui-ā-Iwi Expo April 2025** – 500+ attendees
- **Waitangi Day** and Hui ā Iwi at Te Uru Karaka
- **Puanga Exhibition 2025** showcasing Toi Rangitāne
- **Māra Kai Wānanga** – whānau grew kai and connections through māra kits, carved pou, and maramataka guidance
- **Mau Rākau Series** – George Davis led a kaupapa that expanded into weekly training at Takaro School hall
- **Diabetes Workshop** – honouring matua Lorimer Governor's mahi, with hauora kōrero, cooking demonstrations, and future plans
- **Ngā Waiata o Rangitāne o Manawātū Vol. 1** – launch of waiata resources preserving pātere and ngeri for the future
- **Te Matatini Haerenga** – whānau haerenga to support our local kapa roopu on the national stage.
- **Te Ahu a Turanga Haerenga** – whānau haerenga with Toi Warbrick, reconnecting with whenua and whakapapa

# Social Media Report

ROMST TAUMATA HOU

## Followers Growth

**+184** Total Increase  
159%

Total Followers

**300+** 

## Views

**85k+**

## Engagement

Total  
**2,840**

Comments Reacts Shares  
**214 | 2,382 | 244**

## Facebook followers



## Popular posts

Kia ora e te iwi,  
Our RoMST Tohunga Whakairo Craig Kawana has just completed a series of stunning murals alongside [SwiftMantis](#) for 2 cabins and a large wall at Tanenuiarangi Manawātū Inc. These murals incorporate native flora and fauna, as well as our local landscape and references to historic Rangitane designs used in our past.  
Ngā mihi.



ROMST  
Taumata Hou  
Cultural Center

39

Ngā mihi nui to all of our stall holders, helpers, and all of our whānau and the community who came through on Sunday to make our Hui-ā-Iwi Expo such a spectacular day!

Please enjoy the video of our Hui-ā-Iwi Expo below, captured by [Sam Millen](#)



51

13

Kia ora e te iwi;

At the dawn of a cold spring morning on 25/09/2024, Motuiti Pā sent its most pre-eminent senior athletes and coach Debbie Te Puni to compete for glory in the annual Kaumatua Olympics at Te Rauparaha Stadium in Porirua. The athletes produced a dazzling display of skill, athleticism and finesse to bring home honours across a diverse range of events.

Ngā mihi nui to the kaumatua who proudly represented !!



36

8



ROMST Taumata Hou

364 followers • 12 following

Nau mai, haere mai! Official page of ROMST and the Taumata Hou office.

Favourites

Sign Up

Posts About Photos Reels More



# Website Analysis

ROMST.CO.NZ

## Visitor location

**50+**

Different cities & towns in NZ

### Top Visitor Locations

|            |                  |            |
|------------|------------------|------------|
| Auckland   | Palmerston North | Wellington |
| <b>867</b> | <b>790</b>       | <b>621</b> |

## Visits & Views

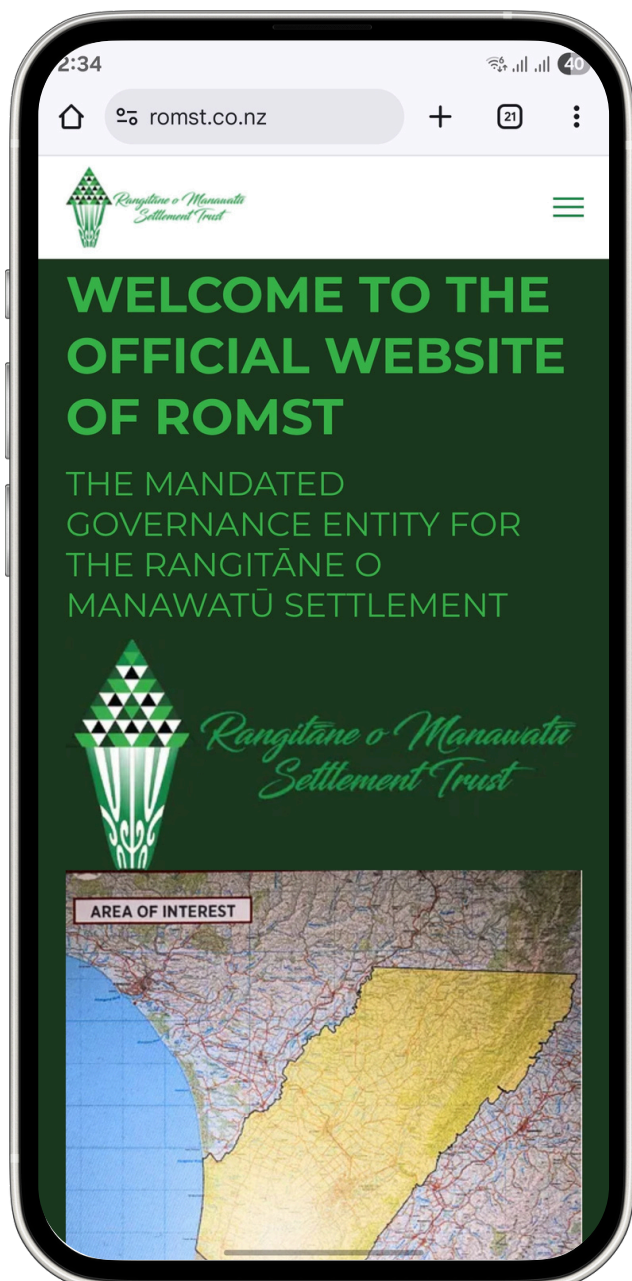
**+51%**

|                 |                 |
|-----------------|-----------------|
| 2023-2024 Total | 2024-2025 Total |
| <b>12,366</b>   | <b>18,687</b>   |

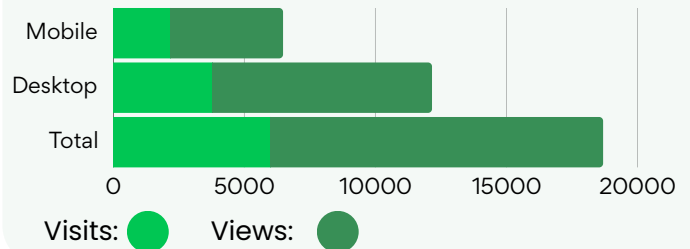
## Form Submissions

**Total 230+**

|            |                     |            |
|------------|---------------------|------------|
| NTW        | Sponsor/Scholarship | Kaumatuā   |
| <b>90+</b> | <b>19</b>           | <b>20+</b> |



## Page Visits & Views



## Popular pages

| Page             | Views |
|------------------|-------|
| 1 Homepage       | 2908  |
| 2 ROMST          | 1446  |
| 3 Register       | 880   |
| 4 Ngā Tini Whetu | 633   |
| 5 ROMIT          | 611   |





Puanga Exhibition  
2025 - *Malachi Oldridge*



## Pou Taiao

Environment & Sustainability

As kaitiaki, we advanced biodiversity projects at Moutoa and Pohangina and established a new pā harakeke. Mokomoko monitoring added to our taiao knowledge. The appointment of Kahurangi Hapi Tangaroa as Pou Taiao has brought vision and rangatahi energy. His mahi reflects the weaving of mātauranga tuku iho with contemporary approaches. Pou Taiao is supported by the Cultural Trust – Warren Warbrick, Peter Te Rangi, Charles Matenga, Kahurangi Hapi Tangaroa and Kararaina Te Puni – guided by George Davis. Their expertise ensures our mahi is both scientifically robust and culturally grounded.

## Pou Tūrangawaewae

Cultural Identity & Whenua

Every step on our whenua strengthens our tūrangawaewae. This year, we progressed the Kikiwhenua process with PNCC and RACE, and advanced Te Uru Karaka with Massey University. Whānau were taken onto wāhi tapu and cultural properties for wānanga and harvesting – strengthening whakapapa knowledge, transferring skills, and keeping our people connected to place. Kaupapa highlight: The haerenga to Te Ahu a Turanga with Toi Warbrick deepened whānau connection to whenua and whakapapa.

## Pou Toi

Arts & Cultural Expression

Rangitāne artistry flourished through He Aho Tangata and the work of our Tohunga Whakairo. The 2025 Puanga Exhibition showcased Toi Rangitāne, with artists gaining recognition and new opportunities. He Aho Tangata expanded its membership and commissions, embedding Rangitāne design into public spaces. Our Tohunga Whakairo, Craig Kawana, completed significant carving projects and supplied taonga for our coffers – gifts for manuhiri that strengthen our tikanga and manaakitanga.

## Pou Mātauranga

Education & Knowledge

Our pursuit of mātauranga is about equipping rangatahi for both te ao Māori and te ao hurihuri. The Whānau Engagement Project with the Ministry of Education created flexible pathways for whānau. The aspiration for a kura ā iwi remains strong, with kōrero ongoing. The Rangatahi Advisory Group gave young people a platform, elevating priorities such as mentoring, reo development, and leadership. Kaupapa highlight: New initiatives included the mau rākau series, hauora workshops, and a waiata resource, broadening learning pathways for whānau and rangatahi.

## Pou Tangata

Our People

Our investment in people remained strong. Kaumātua were supported through grants, winter packs, and hauora outreach. Rangatahi and whānau benefited from Ngā Tini Whetū scholarships and sponsorships across sport, culture, and leadership. Systems were upgraded – with TIKI-OS and MāoriMe ensuring better engagement and communication. Together, these kaupapa reflect our enduring commitment: to uplift whānau, support kaumātua, and empower rangatahi to succeed.

## Pou Rangitānetanga

Whānau, Hapū & Community

Whānau, hapū, and marae are the heartbeat of Rangitāne. This year we supported kaumātua, rangatahi, and whānau through registrations, grants, and hui. Engagement across hapū and marae ensured voices were heard in decision-making, while Hui ā Iwi and collaborations with local providers strengthened connections. Kaupapa highlight: The Māra Kai Wānanga gave whānau opportunities to reconnect with māra traditions, planting kai and strengthening whanaungatanga.

## Pou Tahua

Finance & Investment

Pou Tahua sustains our operations and provides for future growth. This year we acknowledge Matua Ruma Karaitiana, who retires as Chair of RoMIT after guiding it with wisdom and professionalism since its inception. His legacy will endure for generations. Key projects included: Tangimoana Forest harvesting and replanting, Hokowhitu subdivision sales, the Ranfurly social housing project, and the Police Station car park development. Trustees Roly Fitzgerald, Te Ariki Te Puni, and Alexia McEwen continue to strengthen Pou Tahua, ensuring long-term prosperity.





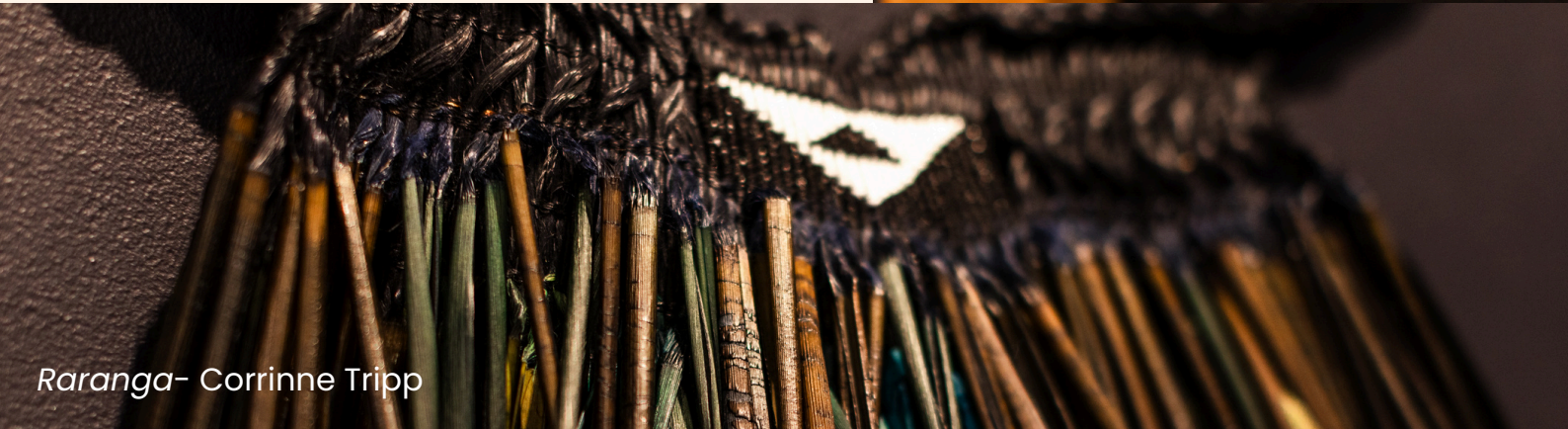
*Rangitane o Manawatu  
Settlement Trust*

# HE AHO TANGATA

*Rangitane Arts collective*



Kō- Warren Warbrick



Raranga- Corrinne Tripp

This past year, He Aho Tangata have continued to carve out their space in the Manawātū art scene. Having hosted a second Puanga Exhibition at Square Edge, He Aho Tangata have also completed mahi for various organisations in the past year including CEDA, PNCC, Manawātū Multicultural Council and more. We were also delighted to welcome in two new members this year, both of whom exhibited for Puanga this year, nau mai haere mai! We also wish to thank PNCC and Square Edge Community Arts for supporting, sponsoring and helping to platform Toi Rangitane this year.

## *Milestones*

- Puanga Exhibition 2025 @ Square Edge
- Kowhaiwhai Wānanga @ Hui-ā-iwi
- Tamakuku Pou opened at He Ara Kotahi, Hei Ara Korero bridge
- Highbury Pou opened at Highbury Shops
- Designs for PNCC internal use
- Designs for Multicultural Hub opposite Te Marae o Hine
- Visual ID for Te Āpiti Manawātū Gorge Governance Group
- Draft curriculum for Te Ahi Kākā







Mau Rākau  
Wānanga

# Rangitāne o Manawatū Cultural Trust



## Ngā Uara Our values



### Whakatipuranga

Strengthen  
heritage through  
whakapapa



### Manaakitanga

Empower whānau  
with resources and  
support



### Taiao

Restore land and  
environment—  
spiritually and  
physically



### Kaitiakitanga

Protect taonga  
and mātauranga



### Kotahitanga

Foster unity through  
transparent hui and  
collaborative  
decision-making



### Tikanga

Celebrate  
connectedness  
and collective  
identity

“Kia pai te to I nga waewae o to mokopuna kia pai ai te haere I pouhungina”,

“Teach your children well so they will know who they are and where they  
come from.”



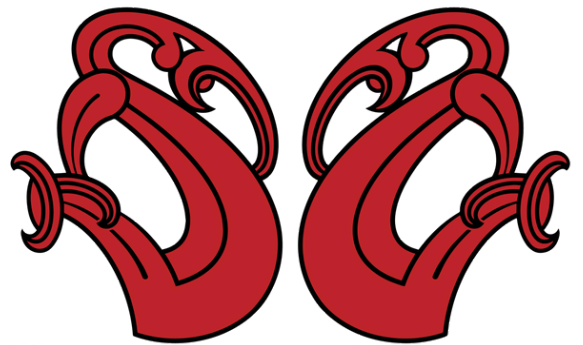
# Rangitāne o Manawatū Cultural Trust



## Whakamārama, Moemoeā & Whainga

### Whakamārama

- The design features two manaia, each representing a different aspect of the iwi's identity and responsibilities:
- One manaia represents the Trust, symbolising leadership, governance, and kaitiakitanga.
- The other manaia represents our people ngā uri whakatipu, acknowledging the connection to whānau, hapū, and hapori.
- The two figures are face-to-face, symbolising reciprocity, communication, and mutual accountability.
- This reflects the principle that information and decisions should flow both ways - from the Trust to the people, and from the people back to the Trust.
- The legs of the manaia have been intentionally designed to resemble the beaks of the huia, which carries its own significance:
- The huia is a symbol of prestige, mana, and unity.
- The beak-like forms evoke the image of being engaged in kōrero, further reinforcing the idea of active dialogue and connection.



*Rangitāne o Manawatū  
Cultural Trust*

### Whainga

**Guiding Philosophy: Grounded in Te Ao Mārama, we aim to:**

- Champion mokopuna resilience and identity
- Heal the environment through kaitiakitanga
- Strengthen mātauranga: bridging generations
- Honour tūpuna and uphold tino rangatiratanga

### Moemoeā

**"Ko wai koe, nō hea koe, nō wai koe?"  
"Who's water do you come from, are  
you well?"**

- A sustainable future for our people, taonga and whenua
- Mātauranga that identifies us as Rangitāne
- Celebration of wāhi tapu and our iwi stories





## Chair's Introduction

Throughout this period, the Rangitāne o Manawātū Cultural Trust has demonstrated deep commitment to strengthening cultural leadership, environmental stewardship, and strategic clarity. Trustees have guided the Trust through a series of considered engagements, each one building upon the last to shape a living, responsive vision for the future.

The strategic plan has evolved into a dynamic document, reflecting the collective wisdom of the board and the values that underpin their mahi. Trustees have worked collaboratively to define Pou, clarify timeframes, and ensure that the plan remains grounded in whakapapa and responsive to whānau aspirations. Internal education has been a key focus—drawing from the mātauranga already present around the table—before extending that learning outward through wānanga and communications.

# TIAMANA REPORT - ROMCT

George Davis

## Cultural Property Engagement

Cultural property visits have been a highlight, offering space to walk the whenua, share pūrākau, and visualise future possibilities. A living cultural property report was initiated to capture mātauranga across sites, with trustees invited to contribute their insights. These visits have sparked kōrero around potential redevelopment of whenua and the establishment of a biodiversity sanctuary.

## Cultural Events & Storytelling

Cultural events and storytelling have also been a vital thread. Local History Week was supported with kōrero from trustees, and the Huia Exhibition was endorsed as a meaningful opportunity to reconnect with taonga and ecological heritage. Trustees have ensured that ROMCT is present, visible, and active in spaces where cultural knowledge and leadership are needed most.

## Strategic Direction & Cultural Leadership

As Chair of the Rangitāne o Manawātū Cultural Trust, it is both a privilege and a deep source of pride to present this summary of our collective mahi from November 2024 to August 2025. I begin by acknowledging our Cultural Trustees — Matua Charles Matenga, Kahurangi Hapi-Tangaroa, Kararaina Te Puni, Matua Peter Te Rangi, and Warren Warbrick — each of whom brings passion, drive, motivation, and aroha to every kaupapa we undertake. Your steadfast dedication to the wellbeing of our whenua, our taonga, and our people is evident in every decision, every wānanga, and every step forward. You honour the legacy of those who came before us and shape new pathways with courage, clarity, and care. This report reflects your integrity, your insight, and the love you hold for Rangitāne — and for each other.





## *Rangitāne o Manawatū Cultural Trust*

### TIAMANA REPORT - ROMCT

George Davis

#### **Partnerships & External Engagement**

Trustees have actively nurtured partnerships with external agencies, including AgResearch, DOC, Horizons, and local councils. ROMCT has ensured that perspectives are always through a Rangitāne lens making sure they are embedded from the outset.

Environmental kaupapa have remained central. Trustees have engaged in bird translocation planning, emergency management hui, and pest control strategies. This process is slowly but surely enhancing relationships with a commitment to deeper collaboration, particularly around erosion control, water testing, and RM reforms.

Local government engagement has included critical feedback on the PNCC stormwater strategy and cultural input into lagoon restoration projects. Trustees have raised concerns about iwi voice and have coordinated responses to ensure whānau perspectives are heard, prompting thoughtful reflection on cultural impact and future involvement.

#### **Closing Reflections**

This summary reflects the depth, integrity, and collective strength of the ROMCT trustees. Their mahi has been deliberate, courageous, and grounded in tikanga. The Trust continues to move forward with clarity, unity, and a deep sense of responsibility to the whenua, the people, and the legacy they are shaping.

*Nāku noa, nā*

*George Davis*

*Tiamana*





ROMCT Seedbank  
Haerenga - May 2025



Te Ahu a Turanga  
Haerenga - June 2025



Te Matatini Haerenga -  
February 2025





## Rangitāne o Manawatū Cultural Trustees

### Kararaina Te Puni

Ko Kararaina Te Puni tōku ingoa  
Ko Ngāti Mairehau tōku hapū

It's been a real privilege to serve as Vice Chair for the Rangitāne o Manawatū Cultural Trust this past year. Although we're still in our early days, the Trust has already been involved in some incredible kaupapa, and the amount of mahi that's gone in reflects the strength and dedication of everyone around the table. One of the things I've really valued is the relationships we've built with other organisations. These connections have made it easier to engage in consultation and have opened up opportunities that align with our values and long-term vision. On a personal level, it's been refreshing to work alongside a rūpū that genuinely cares about doing what's right for our whānau, past, present and future. I feel lucky to be part of this space and proud of what we've achieved together. Ngā mihi nui to everyone who has contributed to the kaupapa this year. The collective energy, care and commitment across the Trust has been inspiring, and I'm excited to see where our mahi takes us next.

Ngā mihi.

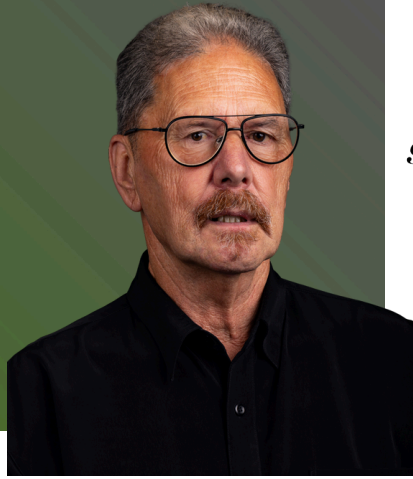
### Warren Warbrick

Ngāti Te Rangitepaia, Ngāti Hineaute

Since joining the trust in mid-2024, my greatest highlight has been visiting the lands held in trust for the iwi. I have found it empowering to visit as a roopu, to bring together the history and land in situ, from our collective mātauranga. As we develop our understanding, I hope that we, as the trust, can bring you along with us on the same journey and share the whenua and pūrākau with you.

Another highlight was supporting whanaunga to present some of our Rangitane pūrākau during our city's Local History Week and Heritage Month 2025.





# Rangitāne o Manawatū Cultural Trustees

## Charles Matenga

Tena tātou ngā uri o Rangitāne

Another year is almost at an end.

I would like to acknowledge all fellow trustees involved with the cultural trust, our chairman, George Davies, deputy chair, Kararaina Te Puni, Kahurangi Hapi-Tangaroa, Peter Te Rangi and Warren Warbrick, and also the Admin. They all bring to the table a great understanding and professionalism of the take and kaupapa that is in front of them. A great cross section of ages, each bringing to the table their own areas of expertise; to bring forth the kōrero of a by gone era and to build on it can only but help realise the “dreams” and hopes” of our people.

Tiaki pai i te ahi o te tūmanako

## Kahurangi Hapi-Tangaroa

It has been a privilege and honour to step into this role, where I can apply my hands-on experience and environmental knowledge across our cultural redress properties. Sitting alongside some of our kaumātua who hold deep, intergenerational kōrero and historical insights of our iwi has been both humbling and inspiring. Their guidance has been instrumental in shaping my approach as I grow into this role and has strengthened my personal connection to the whenua through the mahi that ROMCT has enabled me to undertake.

As one of the younger voices at the table, I have valued the opportunity to contribute a fresh perspective while continuing to learn from those who have paved the way before me. In a relatively short timeframe since our trust's establishment, we have made considerable progress. Our collective efforts are focused on building strong, meaningful relationships that create opportunities to enhance and protect our cultural redress properties. I'm excited for the future of our cultural trust and the potential it holds for whānau to reconnect with and engage more deeply in the care, use, and celebration of our whenua.





# Rangitāne o Manawatū Cultural Trustees

## Peter TeRangi

Kia ora tātau,

My name is Peter TeRangi. I may be familiar to those who have been born and bred locally but for those who don't know me I am the son of Inia & Jeanette TeRangi and I have been born and bred in Rangiotu, attended Rangiotu School, Palmerston North Boys High School, and then on to Massey University thereafter. After graduating I did a range of different jobs, until settling on being a school teacher and took this career to the time I retired in 2018. My wife Rosemary, my 2 daughters as well as 5 mokopuna form "Team TeRangi" who are among my greatest supporters as well as my greatest inspiration for all that I do.

The Rangitāne o Manawatū Cultural Trust has been formed under the mandate of the Settlement Trust which is now the legitimate body to represent our tribal interests after the Treaty of Waitangi Settlement to Rangitāne. It is important to acknowledge those who worked hard to bring our claim to resolution and now we move forward.

When we consider the word "culture" it covers a very wide sweep of endeavour, past, present and future. This has provided us with some thought provoking challenges as we formulate our vision and priorities for us as an iwi. We are fortunate to have a competent leadership and management team who are cognisant of this, and trustees who bring their respective experience and skillset to the table in your service.

Kia pai te tō i ngā waewae o tō mokopuna

Kia pai ai te haere i Pouhangina.

A whakataukī of Rangitāne which says it all.

Naku iti noa

Peter H TeRangi



# WHĀNAU FEEDBACK

"Was a really great day with so much interaction going on, great Kai, awesome stalls & lots of info on services that are available. Well done to the organisers 😊"

"Thank you so much for this beautiful wānanga. This journey is just the beginning for me :)"

"Great day Debz and ROMST staff"

"He mihi nui for providing such an amazing experience for Rangitāne!"

"Nga mihi nunui ki a koutou e te whanau o ROMST Taumata Hou"

**"KEEP GOING! I LOVE THE MAHI YOU GUYS DO!"**

*Awesome whanau* ❤️❤️

"Mihi nui ki a koutou katoa o Rangitaane"

"Ngā mihi nunui for this opportunity to participate"



# Rangitāne o Manawatū

## SETTLEMENT GROUP ENTITIES



Rangitāne o Manawatū  
Investment Trust



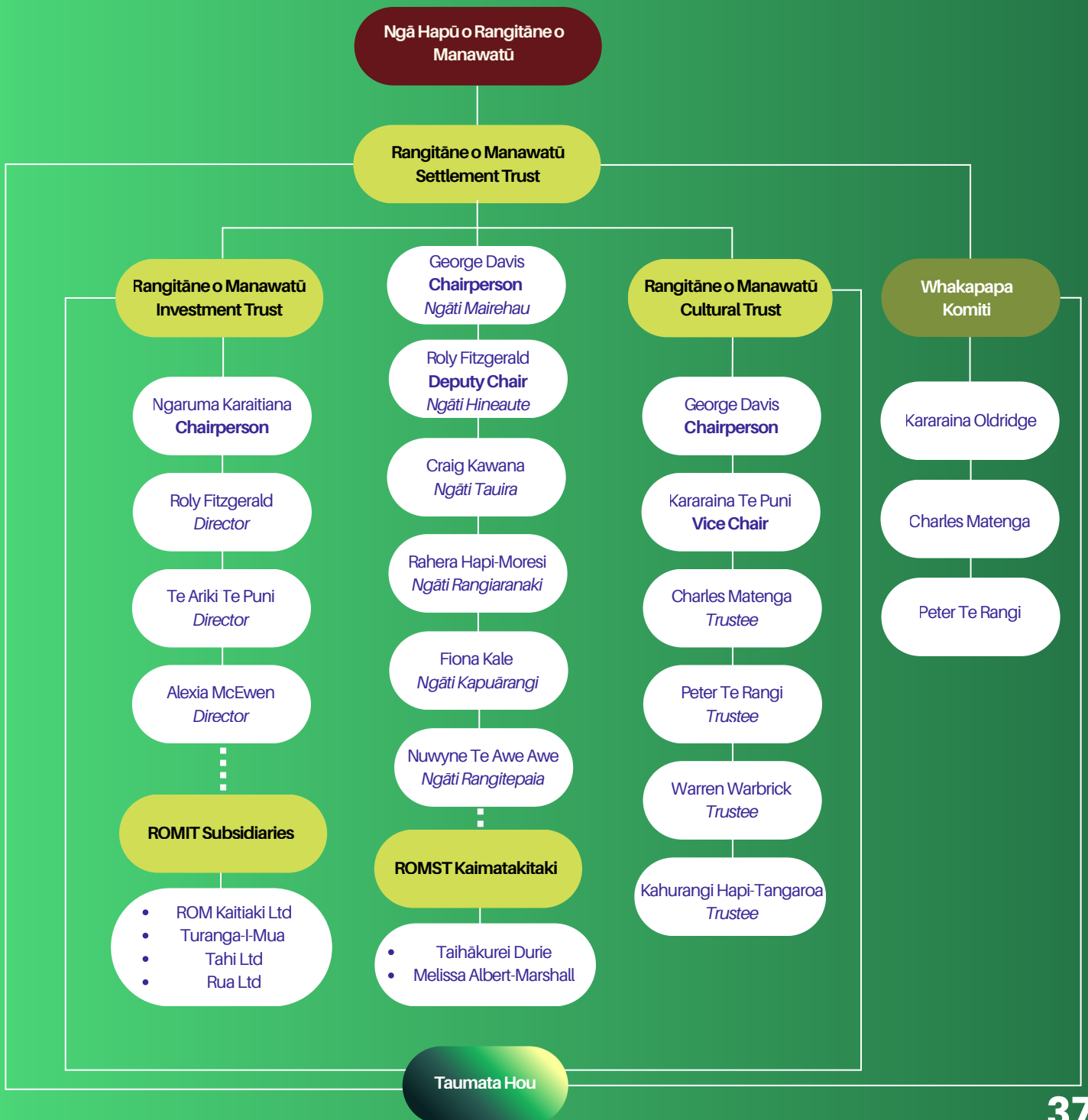
Rangitāne o Manawatū  
Settlement Trust



Rangitāne o Manawatū  
Cultural Trust



Rangitāne o Manawatū Settlement Trust







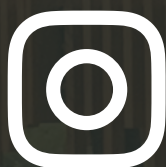
[www.romst.co.nz](http://www.romst.co.nz)



[info@romst.iwi.nz](mailto:info@romst.iwi.nz)



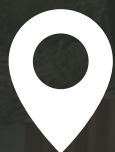
ROMST Taumata Hou



[romst.taumata\\_hou](https://www.instagram.com/romst.taumata_hou)



PO Box 1042, Papaioea



Unit 2, 74 Grey St,  
Papaioea



*Rangitāne o Manawatu  
Investment Trust*



*Rangitāne o Manawatu  
Cultural Trust*



*Rangitāne o Manawatu  
Settlement Trust*

**TAUMATA HOU**