

ST. JUDE CATHOLIC CHURCH

10526 166th Avenue NE, Redmond 98052

www.stjude-redmond.org



The Feast of the Dedication of the Lateran Basilica in Rome

November 9, 2025
Parish Bulletin

FEAST OF THE DEDICATION OF THE LATERAN BASILICA NOV 9, 2025

NEW TO REDMOND OR ST. JUDE? WELCOME!

We would be glad to have you as a member of our parish! Please fill out a registration on our website or by scanning the QR code, so we can get to know and serve you better.



CHURCH OFFICE

Telephone: 425-883-7685

Office Hours: Monday - Thursday 9 AM to 4 PM
Friday 9 AM to 12PM

Church Address and Mailing Address:
10526 166th Avenue NE, Redmond, WA 98052

Website: www.stjude-redmond.org

PARISH STAFF

Pastor

Rev. James Johnson frjohnson@stjude-redmond.org

Parochial Vicar

Rev. Raphael Ambadan fraphael@stjude-redmond.org

Deacon

Reuben D'sa reuben@stjude-redmond.org

Pastoral Associate

Betty Reyes bettyreyes@stjude-redmond.org

Pastoral Assistant for Administration

Krista Schafer kristas@stjude-redmond.org

Front Office, Registration, Sacramental Records

Avril Allori avril@stjude-redmond.org

Faith Formation

Rick Casolary rick@stjude-redmond.org

Joan Archana Chandran joan@stjude-redmond.org

Database Coordinator, Ministry Events Scheduling

Dorota Milewska dorota@stjude-redmond.org

Office Manager, Communications, Events

Norma Estoy norma@stjude-redmond.org

Facilities Coordinator

Angel Herrera angel@stjude-redmond.org

CELEBRATION OF THE SACRAMENTS

SUNDAY MASS

Saturday Vigil Mass: 5:00 PM

Sunday: 9:00 AM and 11:00 AM

DAILY MASS

Monday, Wednesday, Thursday, Friday: 9:00 AM

Please see Weekly Calendar on insert for any updated week-to-week schedule changes.

EXPOSITION OF THE BLESSED SACRAMENT

Fridays after 9:00 AM Mass until 9:00 PM. Sign up in advance at <http://stjude.weadorehim.com/> to help us ensure someone is always present with Jesus.

CONFESSIONS

Wednesdays, 8:30 — 8:50 AM

Saturdays 3:30 — 4:30 PM or by appointment

COMMUNION TO THE HOMEBOUND

Please contact the office to schedule a visit.

BAPTISM OF INFANTS

Infants and children under 7 are baptized monthly at Mass. A preparation session is required for parents and Godparents. Please contact Betty Reyes.

BECOMING CATHOLIC

Are you a non-baptized adult or were baptized in another Christian community and would like to become Catholic? Or have children age 7+ who would like to be baptized Catholic? Contact Deacon Reuben.

MARRIAGE

A preparation program over a period of several months is required. Contact Fr. Johnson to begin the process.

ANointing OF THE SICK

In case of serious illness, impending surgery or advanced age, please contact the parish office or Fr. Johnson. The sacrament should not be delayed until the person is unconscious or in imminent danger of death.

FUNERALS

Contact Fr. Johnson through the office at 425-883-7685.

CATHOLIC CEMETARIES SERVING ST. JUDE

Calvary 206-522-0996 Holyrood 206-363-8404

ASSISTANCE TO THOSE IN NEED

ST. VINCENT de PAUL

- SVdP Helpline number for assistance: 206-767-6449
- To learn more or to join the ministry contact: Diane Murphy at svdp@stjude-redmond.org
- To donate furniture or household items email: svdpfurniture@stjude-redmond.org

SAFE PARKING

Contact: safeparking@stjude-redmond.org

Safe Parking Helpline: 425-658-4982

CATHOLIC COMMUNITY SERVICES

Marriage, adolescent, family and individual counseling and referral. Call 1-800-872-3204

KNIGHTS OF COLUMBUS

knightsofcolumbus@stjude-redmond.org

THE FEAST OF THE DEDICATION OF THE LATERAN BASILICA (St. John Lateran)

Dear parishioners,

This weekend we celebrate the **Feast of the Dedication of the Lateran Basilica** in Rome, the Pope's Cathedral. However, it really is a celebration of the whole universal Church. Therefore, it is quite appropriate that the Lateran Basilica is known as, *"the mother and head of all the Churches of the city and the world."* The Church is, on the one hand, the living institution of all those chosen and called by God to be conformed to him in baptism as members of his Body. At the same time, Church is symbolized by the structures we erect to worship the Lord. This is the place where the Church becomes visible and is sustained by the living presence of the Lord. The church is called a mother, because she is meant to nurture and sustain the faith of believers.

Pope Benedict beautifully describes the significance of this feast: *The Word of God during this Solemnity recalls an essential truth: the stone temple is the symbol of the living Church, the Christian community, that the Apostles Peter and Paul had, in their Letters, already understood as a "spiritual building", constructed by God with the "living stones" that are the Christians, upon the one foundation that is Jesus Christ, who is in turn compared to the "cornerstone". "Brethren,... you are God's building", St Paul writes, and he adds, "God's temple is holy, and you are that temple" (1 Cor 3: 9c, 17). The beauty and the harmony of churches, destined to render praise to God, invites us human beings too, though limited and sinful, to convert ourselves to form a "cosmos", a well-ordered construction, in close communion with Jesus, who is the true Holy of Holies... Today's feast celebrates an ever current mystery: that God desires to build himself a spiritual temple in the world, a community that adores him in spirit and truth (cf. Jn 4: 23-24). But this occasion reminds us also of the importance of the concrete buildings in which the community gathers together to celebrate God's praises... For this we invoke the intercession of Mary Most Holy, so that she might help us to become, like her, a "house of God", living temple of his love.*
POPE BENEDICT

THIS FEAST AND STEWARDSHIP

It is especially appropriate that this feast comes at a time when we are asking us all to renew our commitment to stewardship: stewardship of our Church. We are all called to contribute to building up our parish community to be a place of encounter with the Lord Jesus. At the same time, we need the

Church building, the parish structure, staff, Infrastructure, and utilities to provide a place to worship and encounter the Lord.

Stewardship is a response to God's faithfulness. We share from the generosity of God, a portion of what we have received, trusting in God's providence. Many thanks to all who have made their stewardship pledge already. I am always amazed at your generosity. Your gift builds up our faith community in a wonderful way. Thank you!

If have not made your pledge to stewardship this year, I invite you do so today! This **annual parish stewardship campaign** is when we invite everyone in the parish to commit themselves to giving back to God the "first fruits" of the blessings we have received from the Lord, to support the work of the parish. The Lord reminds us that everything we have comes from God, that we are stewards of those blessings, called to give back and use those blessings to build up the kingdom of God. **How has God blessed you this year? What return shall we make to the Lord for all the good he has done?**

We are inviting you to reflect and pray over how God is calling you to give, and renew your commitment to stewardship. **Please return the commitment cards ASAP to the parish by placing them in the collection basket, mailing them or dropping them by the parish office or by making your pledge online at our website, www.stjude-redmond.org. Please know that we need every family's help. Your gift, whatever the amount, makes a huge difference.**

Remember, too, that stewardship is not only about sharing our monetary resources. The parish needs your time and talent as well to build up the kingdom here in Redmond, Duvall, Carnation, and the surrounding areas. Your response to the Lord's call makes this place go, keeps the heat and lights on, enables us to pass on the faith, reach out to those in need, and worship God in a fitting way.

Finally, I want to express my heartfelt thanks for the way you so generously support our parish with your time, your talent, your treasure, and most of all with your love of the Lord Jesus!

**With gratitude and prayers,
Fr. Johnson**

WEEKLY CALENDAR

Monday, November 10

9:00 AM Daily Mass
10:00 AM Women of Faith
7:00 PM Confirmation Class #4

Tuesday, November 11

Veterans Day—Church & Office Closed

No Daily Mass
6:00 PM Adult Confirmation

Wednesday, November 12

8:30 AM Confessions
9:00 AM Daily Mass
7:00 PM House of Prayer
7:00 PM Gospel Choir Rehearsal
(for 11AM Masses)

Thursday, November 13

No Daily Mass

12:15 PM Steps to Freedom
1:00 PM Rosary Cenacle
6:30 PM Sanctuary Choir Rehearsal
(for 9AM Masses)
7:00 PM OCIA

Friday, November 14

9:00 AM Daily Mass
9:30 AM Adoration until 9PM
10:00 AM Guardians & Angels

Saturday, November 15

10:00 AM & 11:00 AM First Reconciliation
3:30 PM Confessions
3:45 PM Giving Tree Set-Up
5:00 PM Saturday Vigil Mass
Wine & Cheese after Mass

Sunday, November 16

9:00 AM Sunday Mass
11:00 AM Sunday Mass
Coffee & Donuts after both Masses
6:30 PM Teen Group

#TechcumenicalMass

Mass for Tech Professionals

All technical professionals in the Puget Sound,
current and former, are invited to the

Mass of Thanksgiving

Fellowship gathering will follow with food
and drinks.

Tuesday November 18 | 6PM

Saint Jude Catholic Church

10526 166th Ave NE, Redmond, WA 98052



Archbishop Paul D. Etienne will preside
and will impart a special blessing

"Together with its
extraordinary potential to
benefit the human family,
the rapid development
of AI also raises deeper
questions concerning
the proper use of such
technology in generating a
more authentically just and
human global society."

Pope Leo XIV

For more information contact camsww@microsoft.com



DITTY BAGS NEEDED!

Once again, we have been asked by the Catholic Seafarers Center (formerly known as the Catholic Seamen's Club) to include ditty bags with our gifts that we donate to them with our Christmas Giving Tree Project. The ditty bags can be constructed of almost any material (pattern or plain) that when hemmed are approximately 12"x14" in size with a drawstring close. They need to be completed by December 7. Any number of bags that you would be able to sew are appreciated. Please leave them at the Church office or under the Christmas Giving Trees that will be in the Narthex beginning November 15.

If you have any questions, please contact
Susan Pilawski
(425) 417-6590.



WELCOME TO OUR PARISH FAMILY!

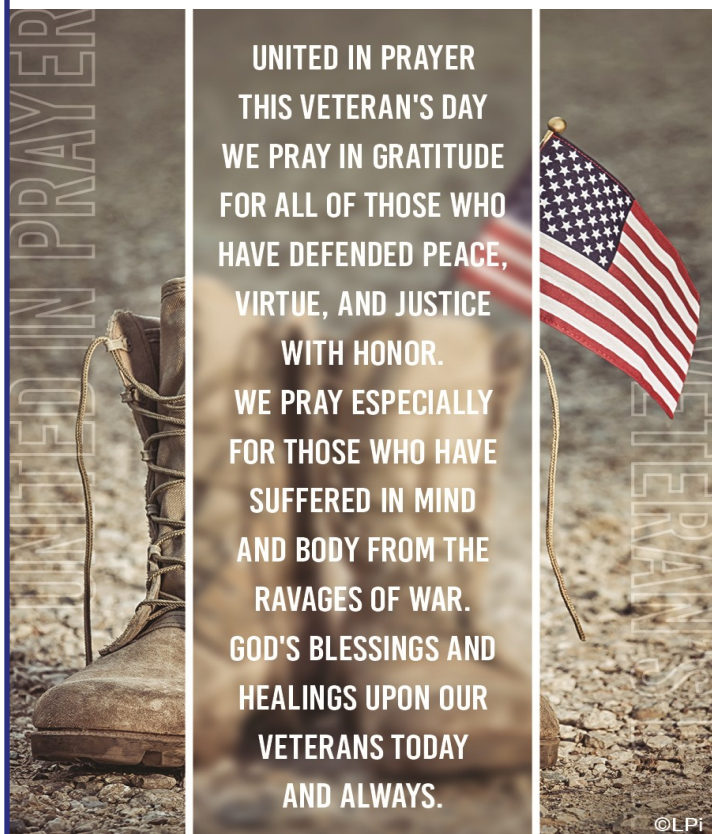
St Jude | Holy Innocents
Mission Church of St. Anthony

PARISH NEWS



— HONORING — VETERANS DAY

The Church and Parish Office will be closed in observance of Veterans Day. Thank you to all our veterans, God bless you.



FUNERAL RECEPTION MINISTRY

Our funeral reception ministry has been busy this fall and is in **need of some new workers and cooks**. Our mission is to help the grieving family by taking one item off their list of things that need to be done. This is a great ministry, especially if you do not like meetings! We ask for salads or desserts for the receptions and need about four people to help set up, serve, and clean up.

Thank you for considering this ministry.

Blessings,
Ann Case, Funeral Ministry Lead
Thecaseplace@comcast.net

If you can help by washing table cloths after funeral receptions, please contact Betty.
Thank you and God bless you!
bettyreyes@stjude-redmond.org

Mass Schedule Update No Daily Mass Nov. 13, Thursday

Please note, there will be **no Daily Mass on Thursday Nov 13, 2025** as Fr. Raphael will be away. Daily Mass is available that day at our sister parish, Holy Innocents in Duvall, at 9AM.

Liturgical Ministers Refresher Courses

Are you presently serving at Mass as an Altar Server, Eucharistic Minister, Lector or Usher? We are having a gathering for each of those involved in these ministries in the coming weeks. It will be a great opportunity to get to know each other as well as look at our current practices. Please mark your calendars and let Betty know that you will be attending. Thank you for your dedication and service to our parish community.

Saturdays 10:30AM—12:00PM

Eucharistic Ministers:

Nov. 22, 2025

Ushers: Dec. 13, 2025

2026 STEWARDSHIP OF TREASURE

You Can Make a Difference

Over the past couple of weeks, we have invited you to reflect on how God has blessed you and to prayerfully consider how you might share those blessings with our parish. Today we heard about the Joy of Stewardship and giving back to God's community.

Your commitment helps sustain the ministries, outreach, and spiritual life of our parish. From sacramental preparation to outreach to our brothers and sisters, your gifts make it possible for us to continue helping one another encounter Jesus Christ. If you haven't yet had a chance to respond, we encourage you to take a moment this week to return your commitment card or make your pledge online. Every gift, no matter the size: we need everyone's help and participation.

Please make your pledge today by scanning the QR code to the right to fill out the Pledge form, or completing the commitment card in the pew, or going to our website www.stjude-redmond.org

If you recently made a pledge to our parish for 2026, thank you so much, **please accept my sincerest thanks and appreciation for participating this year!**

PARISH STEWARDSHIP OF TREASURE.



WE ARE CALLED TO SHARE
OUR TREASURE WITH OTHERS.



WAYS TO FULFILL YOUR PLEDGE:



ONLINE GIVING: Visit our website at www.stjude-redmond.org and click on the online giving tab. Or scan the Online Giving QR Code to the left.

IRA DISTRIBUTIONS

DONOR DIRECTED FUNDS/TRUSTS

STOCKS: Call 800-422-5417 for broker instructions

MINISTRY NEWS



SAVE THE DATE:
Nov. 22,
2025
After 5PM
Mass

As the days take on an autumnal feeling (darker and chillier) it's time for the Diner to turn to our coziest menu. The **Saturday Night Diner** returns on November 22nd after the 5PM Mass. Please join us for chicken pot pie and a colorful winter salad along with a festive cup of hot apple cider – a meal sure to warm your stomach and your soul. So before the holidays get in full swing, take some time to savor our food and the company of friends! And of course, be sure to save room – **because there's always dessert at the Diner!**



**GIVING TREES
COMING SOON**
Nov 15 — Dec 7

Soon our Giving trees will be back as part of our St. Jude traditional Christmas gift to those in need. The trees will be out in the Narthex beginning November 15 until December 7.

The parishioners of St. Jude have always opened their hearts to those in need! When making your Christmas gift-giving lists this year, please try to include room for our "Giving Tree" recipients.

PICTURES FROM THE FEAST OF ST. JUDE INTERNATIONAL POTLUCK

A special thank you to all who came, brought food, worked so hard, and made the Feast of St. Jude and International Potluck such a success!
-Fr. Johnson



Catholic Guidelines on Burial, Cremation, and Ashes: Respect for the Body and Hope in the Resurrection

Death is a profound mystery that stirs a mix of emotions and questions within us about the afterlife, the meaning of life, and how we should say goodbye to our loved ones. In the midst of this pain, the Catholic Church offers clear and meaningful guidelines to help the faithful honor the deceased from a perspective of faith and hope in the resurrection. This article explores the Church's guidance on burial, cremation, and the proper treatment of ashes.

These guidelines are not merely rules but spiritual guides that help us recognize the dignity of the human person and the Christian hope of eternal life. So let us take a moment to reflect on death and resurrection, the meaning of the catholic funeral rites and how to apply them in to our lives.

1. The Christian View of Death and Resurrection

For a believer, death is not a definitive end but a passage toward a full life in communion with God. Christian doctrine holds that, at the end of time, all the dead will rise, and this earthly body—though transformed—will be part of our eternal identity. This is the foundation of the Church's teachings on respecting and caring for the body after death. In Catholic faith, the body is a temple of the Holy Spirit (1 Corinthians 6:19) and a tangible sign of our identity and dignity, deserving special treatment even after passing away.

2. Burial of the Body

It is important to remember that we are created in the image of God: "God created mankind in his image; in the image of God he created them" (Gen 1:27). We know our bodies are precious to God: "Do you not know that your body is a temple of the Holy Spirit within you, whom you have from God, and that you are not your own?" (1 Cor 6:19).

Because of this, our physical bodies require absolute respect, love, and dignity in both life and death. This cherished gift, this body—the only one God has given us—is unique and individual. It is not obliterated, reincarnated, or absorbed into the vast cosmos of the universe when we die. It waits

for the resurrection at the end of time when soul and body will be reunited in heaven with God for eternity.

From the earliest days of the Church, burial of the body has been the Church's preferred way of bidding farewell to the faithful. The early Christians buried their dead in catacombs, not only as a practical necessity but also as an affirmation of their faith in the resurrection. For them, burial was a way to express that the body, as God's handiwork, should rest intact until the time of resurrection. Burial symbolizes an active and hopeful waiting, and this form of body disposition provides the faithful, friends, and family with a physical place to remember and pray. This is why the Church continues to encourage burial in cemeteries as the preferred practice. It shows respect toward the body as created in the image and likeness of God and a visible sign of faith in the resurrection and hope for eternal life.

3. Cremation

With time and cultural changes, cremation has grown in popularity in many societies. While the Church always preferred burial, only since 1997 has it allowed cremation in the United States. However, it has allowed cremation only with certain conditions:

1. That this practice does not contradict faith in the resurrection of the dead.
2. That the Church still prefers the burial of the body.
3. That the preference is that the body be brought to Church for the funeral Mass and then cremated and buried.
4. That **the Church states that ashes must be treated with the same respect as the body.** This means that ashes should remain together and be buried or placed in a sacred location, such as a cemetery or church. The Church strongly discourages practices like keeping ashes at home, scattering them in nature, or turning them into objects like jewelry or keepsakes. These practices are deemed inappropriate because they can lead to a loss of respect for the deceased and diminish reverence for the mystery of death and resurrection.

4. Why the Church Discourages the Scattering of Ashes

The scattering of ashes in the sea, in the mountains, or in other locations has become

popular in some cultures. However, the Catholic Church firmly discourages this practice, as it believes that it does not adequately reflect the dignity of the body or the hope in resurrection. Scattering ashes can dilute the sense of identity and permanence, essential aspects of the Christian concept of the afterlife.

Pope Francis, in the document *Ad resurgendum cum Christo* (2016), explained that keeping ashes in a sacred place helps remember the deceased and promotes prayer for their soul. By being placed in a cemetery or religious site, the ashes can be honored in a dedicated space, allowing relatives to have a reference point for remembrance and prayer.

5. The Spirituality of Grief and the Value of Catholic Funeral Rites

The grieving process is a complex experience that can find relief and comfort in funeral rites. For Catholics, the funeral is not only an act of farewell but also a liturgy of hope, where the community accompanies the family and entrusts the soul of the deceased to God's mercy. The Catholic Funeral Rites of the Vigil, the Funeral Mass, and the Committal at the graveside, provide meaningful moments to reflect on our faith and God's love. These rites allow the community and the family to gather, strengthen each other in faith, and find comfort in the promise of eternal life. The Funeral Mass is particularly important moment of great spiritual significance. In the Funeral Mass the community comes together to pray for the soul of the deceased, gives thanks to God for the gift of their life and asks God to console us and strengthen our faith in the resurrection.

6. Practical Advice for the Faithful and Their Families

Understanding the Church's guidelines on burial, cremation, and ashes can help the faithful and their families make decisions in harmony with their faith:

Plan Ahead: Many people find comfort in expressing their funeral wishes while alive. Talking openly with family members and with the parish priest about options and preferences can make planning easier and ensure that Church teachings are respected.

Choose a Sacred Place: Whether for burial or the placement of ashes, choosing a cemetery or columbarium in a Catholic Cemetery ensures that the location has the respect and sacredness that the remains of a loved one deserve.

Encourage Prayer and Remembrance: Having a sacred place where family members can gather to pray and remember the deceased is important for the grieving process and allows the memory and love for that person to remain alive.

Practices to Avoid: The Church asks the faithful to avoid practices that may dilute respect for the deceased, such as scattering ashes or using them in mementos. Instead, it encourages the faithful to keep ashes in a place that facilitates prayer and reverence. The body should be kept together and treated with love and respect, whether buried or cremated. Human remains cannot be turned into something else, and the burial site needs to be clearly marked. For Catholics, the practical details of dealing with death speak loudly to our faith and our certainty that we will be with God, body and soul, for eternity.

7. Final Reflection: An Act of Faith and Hope

For believers, the moment of death is an opportunity to reaffirm faith in the resurrection and eternal life. The Church's guidelines on burial, cremation, and ashes are not merely norms but expressions of a profound spirituality that seeks to honor human dignity and hope in resurrection. By following these guidelines, Catholics not only respect their loved ones but also bear witness to their faith in God's power to give new life to what has perished. May these teachings inspire in each of us a renewed love and respect for the human body and a living hope in eternal life. In a world that sometimes views death as the final absolute, the Church reminds us that, for God, death is just the beginning of a life fulfilled in His presence.

We know our bodies are precious to God: "Do you not know that your body is a temple of the Holy Spirit within you, whom you have from God, and that you are not your own?" (1 Cor 6:19).

Adapted from A practical guide to death for Catholic – St Anthony Messenger and Catholicus.eu Guidelines from the Catholic Church on Burial...

AROUND THE ARCHDIOCESE



2026 PILGRIMAGE TO ITALY *with Bishop Schuster*



Archdiocese
of Seattle



The Crozier Society

Crozier Society Pilgrimage to Italy

Join the 2026 Crozier Society Pilgrimage to Italy with Bishop Frank R. Schuster.
October 11-22, 2026

Travel to three of Italy's most beautiful and sacred cities: Rome, Assisi, and Florence with Bishop Frank R. Schuster. This transformative journey will open your heart to the living witness of the saints and be a time of prayer, learning and community. Highlights include four major basilicas and Holy Doors in Rome, the tombs of St. Francis and St. Carlo Acutis in Assisi, a walking tour of Florence's Church of Santa Croce, a General Papal Audience – and much more. Limited spots available.

Learn more and register <https://archseattle.org/events/crozier-society-pilgrimage-to-italy/>
Please contact Carin Brown at croziersociety@seattlearch.org if you have any questions.



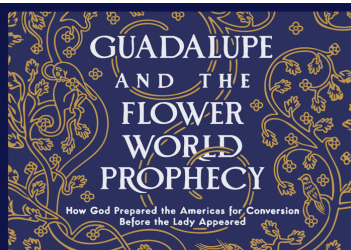
Black Catholic Advisory Circle Annual Conference

THE EUCHARIST FOR INCLUSION AND HEALING

November 15 | 8am–3:30pm | Mass 4pm
St. Paul Catholic Church
10001 57th Ave. S., Seattle



Archdiocese
of Seattle



Authors **Joseph Gonzalez & Monique Gonzalez** on God's preparation of the "New World" for the apparitions of the Blessed Virgin Mary to Saint Juan Diego

FRIDAY, NOVEMBER 14TH at 6pm

EVENT ATTENDANCE IS FREE
(Suggested Donation of \$10)

Friday, November 14th, at 6PM St. Mary Magdalen, Everett
Come listen to Joseph Gonzalez and Monique Gonzalez, authors of *Guadalupe and the Flower World Prophecy*, speak about God's work that, for centuries, prepared the "New World" for the apparitions of the Blessed Virgin Mary to Juan Diego—a moment considered the greatest event of Christian conversion in history.

ST. LOUISE PARISH SCHOOL OPEN HOUSE

Discover the difference a St. Louise education makes — where faith, community, and academic excellence come together to inspire lifelong learners.

SUNDAY | NOV 16 | 10:00-1:00



Scan to Learn More or visit www.stlouiseschool.org

425-746-4220
office@stlouiseschool.org
133 156th Ave SE, Bellevue

FINANCE COUNCIL REPORT

Your generosity supports a wide range of needs of our parish – supporting ministries, maintaining our buildings and parish grounds, ensuring our staff can serve you, maintaining a welcoming environment, and covering everyday necessities like heating and safety. **Most importantly, our stewardship is a fulfillment of our innate desire to give and God's call for us to lead sacrificial lives.**

Stewardship of Treasure

Parish Financial Giving/Sunday Offertory

July 1, 2025 through October 26, 2025

Actual... \$320,863

Goal... \$285,300

Over (Under) Budget \$35,563

Ways to Give

QUALIFIED CHARITABLE DISTRIBUTION

A qualified charitable distribution (QCD) is a direct transfer of funds from your IRA custodian, payable to a qualified charity. A QCD excludes the amount donated from taxable income, which is unlike regular withdrawals from an IRA. QCDs don't require that you itemize, which due to recent tax law changes, means you may decide to take advantage of the higher standard deduction but still use a QCD for charitable giving.

ONLINE GIVING: To donate, scan the QR Code or visit our website at www.stjude-redmond.org



IRA DISTRIBUTIONS (RMD)

By utilizing an IRA for charitable giving, you can satisfy your required minimum distribution (RMD) obligations starting at age 73, while also supporting a cause you care about. The donated amount is excluded from your taxable income, which can provide a tax advantage, especially if you do not itemize deductions.

DONOR ADVISED FUNDS

A charitable investment account for the sole purpose of supporting charitable organizations.

STOCKS: Call 800-422-5417 for broker instructions

MATCHING EMPLOYER GIFTS

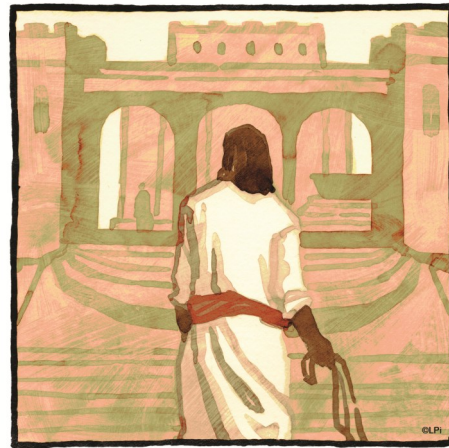
GIVING ENVELOPES: Mail, use collection baskets at Mass or drop off at office.

MASS INTENTIONS

Mass Intentions

Week of November 10 — November 14

Monday, November 10	Floare & Cornel
Wednesday, November 12	Larry Gregory
Thursday, November 13	Feliza Victorio †
Friday, November 14	Edward Lopez †



To those who sold doves he said, "Take these out of here, and stop making my Father's house a marketplace." His disciples recalled the words of Scripture, Zeal for your house will consume me.

— Jn 2:16-17

Excerpts from the Lectionary for Mass ©2001, 1998, 1978 CCD

LIVE THE LITURGY INSPIRATION FOR THE WEEK

"You are the temple of God," Paul tells us. But in today's Gospel we see how easily even temple areas become corrupted. Jesus, purge the greed and selfishness from our hearts. Make them fit dwellings for your Holy Spirit.



Receive St. Jude news straight to your inbox! Sign up for our email newsletter by scanning the QR code or signing up on our website.



Peace of Mind
ADULT FAMILY HOME

Where Residents are Family!
Call for a tour at 425-442-0930
Sheila Navaluna, RN, BSN
"Recommended by longtime parishioner Meg Lewis"

Special Eyes
EYECARE

Located in **COSTCO** Redmond, WA
specialeyes2020.com

Book an Appointment
Call Us Today!
(425) 406-5397
specialeyes2020.com

COLUMBIA & HARVEY FUNERAL HOME
Serving Catholic Families
Funeral Home Manager
K.C. Engle-Fortna
Parishioner of St. Stephens the Martyr
(206) 722-1100
columbiainfuneralhome.com

IF YOU LIVE ALONE

MDMedAlert!™ As Low As **\$19⁹⁵** /mo.

✓ Ambulance ✓ Police/Fire
✓ Family/Friends ✓ GPS & Fall Alert

CALL NOW! 800.808.9294 • md-medialert.com

Service and New Efficient Systems

FISCHER
Heating and Air

206-783-1190
425-974-1003

Guaranteed work!
"Ask your neighbor!"
40 Years of Integrity & Skill

www.fischerheating.com

SUPPORT OUR PARISH

FISCHER PLUMBING

*100,000 Satisfied Customers
206-783-4129
425-455-1310

"The Plumber People Recommend"
40 Years of Integrity and Skill

www.fischerplumbing.com

NOBLE PLUMBING
SNOQUALMIE, WA

noble-plumbing.com • admin@thenobleplumber.com • (425) 200-5642

Residential & Commercial Plumbing

Are you facing challenging care decisions?
We Can Help.

Team Stowe Homes
Kelly and Michelle Stowe
425-761-3674
teamstowe.com

COLDWELL BANKER DANFORTH

Looking to buy or sell a home, or have questions about the Local Market? We are Real Estate Brokers serving our local community for over 10 years and we would love to hear from you!

WE APPRECIATE OUR ADVERTISERS!

Senior Care Solutions
Veronica Griffiths
Certified Senior Advisor
Call us today! (206) 888-7206

BH CONTRACTING

Kitchen & Bath Remodels • Additions
Decks • Small Projects

206-423-9387
www.bhcontractingservices.com

Home Helpers®
Home Care of Kirkland, WA

For more information call Lynn
425-772-7255

- Personal Care • Errands
- Companionship • Meal Prep
- Light Housekeeping • More!

Each office is independently owned and operated.

Señor De Los Milagros Missions Call 425-523-2903

- Children Parent Support Group online - \$25 per meeting
- We give out hygiene/care packages to the homeless (Free)

https://lordofmiracles1.wordpress.com

Inventor Safe Haven Call 206-659-1676

- Starting a Business Workshop online - \$25 per meeting
- Support Group for Inventors, & Creators online - \$25 per meeting

https://inventorsafesaven.wordpress.com

Therapy Guide Counseling 757-266-0333
Psychoeducational Group Sessions online - \$45 per meeting

EASTSIDE CATHOLIC

Unlock Potential,
Transform Your Future
Coed, Grades 6-12

FAIRWINDS REDMOND
A LEISURE CARE PREMIER COMMUNITY

Indoor Pool
Personal Trainers
Large 1 & 2 Bedrooms
Private Transportation
Restaurants on-site
Assisted Living

9988 Avondale Road NE | Redmond, WA 98052
425-558-4700 | www.FairwindsRedmond.com

ROOFSMART
EST. 2011
★ Nailed it! ★

Catholic Owned Business
206-487-4877

cogir KIRKLAND SENIOR LIVING
- BOUTIQUE ASSISTED LIVING -

CALL US TO SCHEDULE A TOUR!
(425) 793-2114

CogirOfKirkland.com