

# 2141 KIPPLING AVE., #209, TORONTO, ON

## 2ND FLOOR OFFICE SPACE FOR LEASE



**KIPLING PLAZA**

**KIPLING AVE. & REXDALE BLVD.**



# PROPERTY HIGHLIGHTS



## 2141 Kipling Ave., Unit 209 – 2nd Floor Office Space For Lease Toronto, Ontario

Welcome to **Kipling Plaza**, located at the busy intersection of Kipling Ave. & Rexdale Blvd. Unit 209 presents an exceptional leasing opportunity—a well-maintained **533 sq. ft.** second-floor commercial space ideally situated at 2141 Kipling Ave, in Toronto.

This professionally managed plaza serves a strong mix of local and national tenants, creating a dynamic business environment. The second-floor location provides a quieter setting while still benefiting from the energy and visibility of the plaza below.

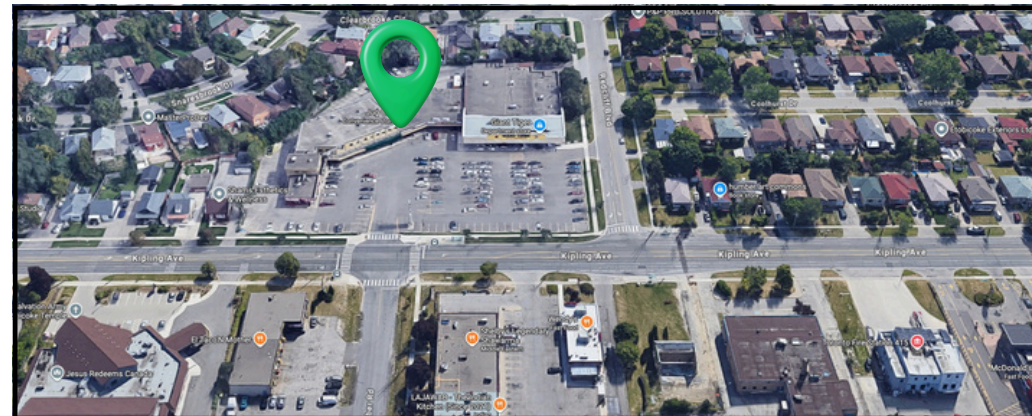
Kipling Plaza is a fully leased, vibrant, high-traffic retail plaza with second-floor commercial space available. Designed for flexibility, this bright and efficient commercial unit is well-suited for a wide range of professional, medical, general office, or service-oriented businesses.

The layout allows for easy customization to accommodate various business needs, whether open-concept or private office configurations. The space is ideal for owner-operators or growing businesses seeking a professional presence without compromising affordability.

Enjoy abundant natural light, easy accessibility, and convenient on-site parking. Elevator and stair access ensure ease of entry for staff and clients alike. Surrounded by established retailers and benefiting from strong pedestrian and vehicle exposure, this second-floor space offers the perfect blend of visibility, functionality, and value in a sought-after location.

With excellent transit connectivity and proximity to major roadways, the property provides seamless access for commuters and customers. This is a rare opportunity to secure space in a high-demand plaza with limited availability.

**Net Rent:** Call Broker  
**TMI:** \$15.00 Per SF (2026)

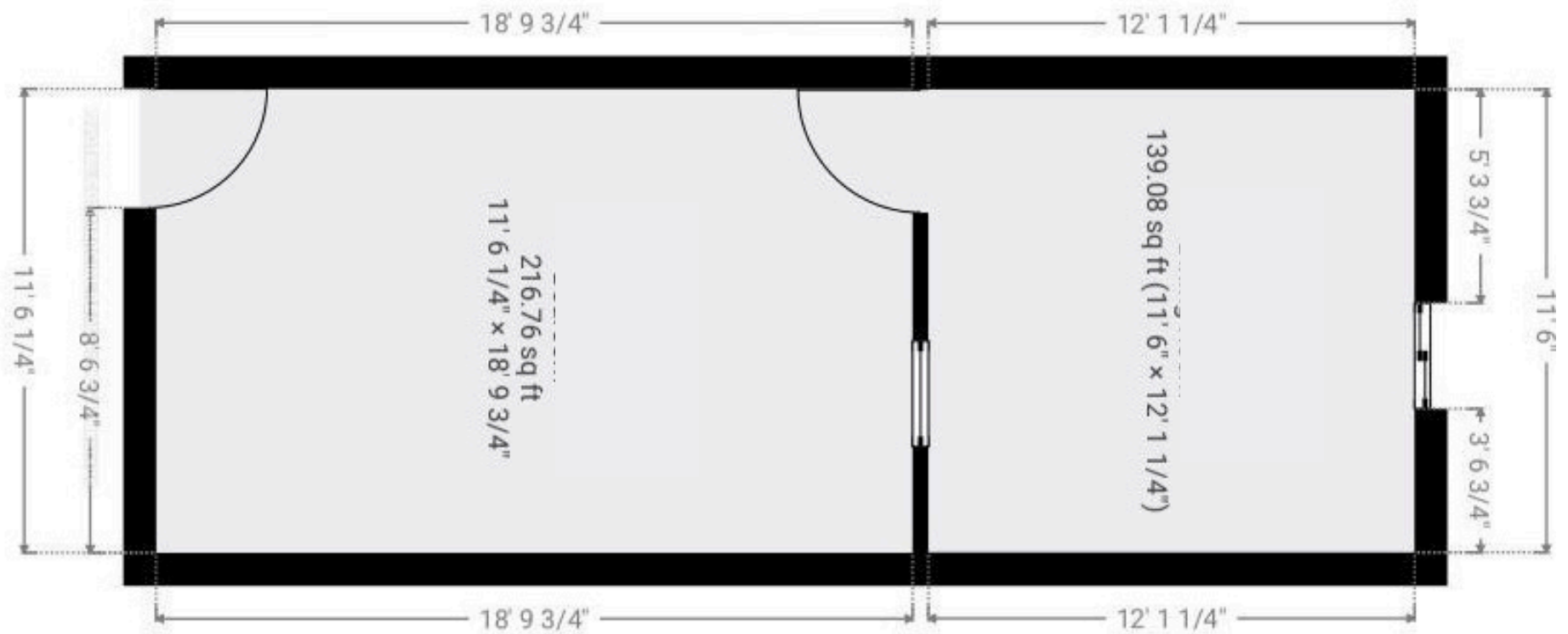




# INTERIOR PHOTOS

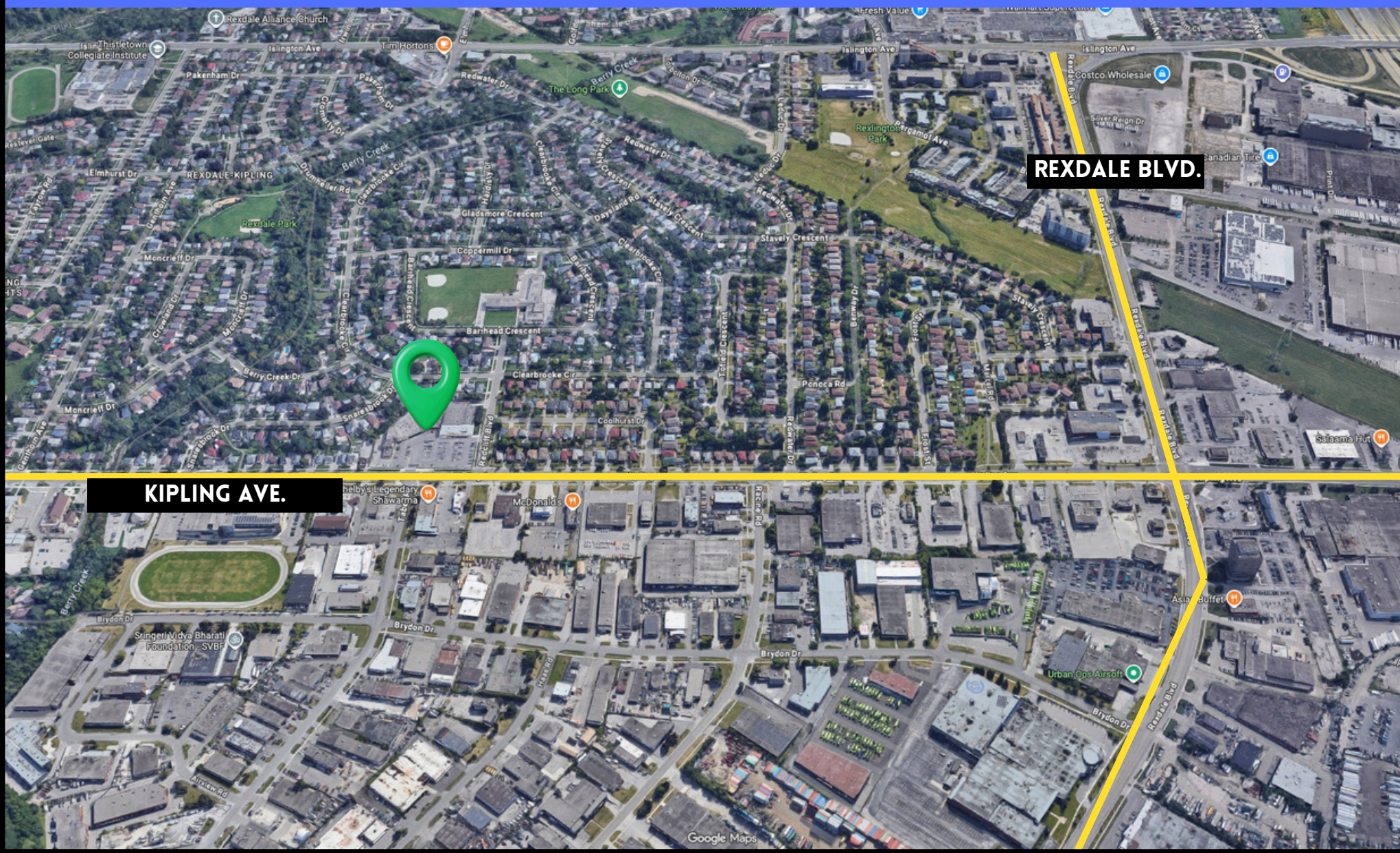


# FLOOR PLAN





# SITE MAP





# CONTACT INFORMATION

## 2ND FLOOR OFFICE SPACE FOR LEASE



**KIPLING PLAZA**

**KIPLING AVE. & REXDALE BLVD.**



**Shawn Abramovitz, BA**  
CEO | Broker of Record  
416.900.3878 Ext: 102  
[shawn@pivotalcommercialrealty.com](mailto:shawn@pivotalcommercialrealty.com)