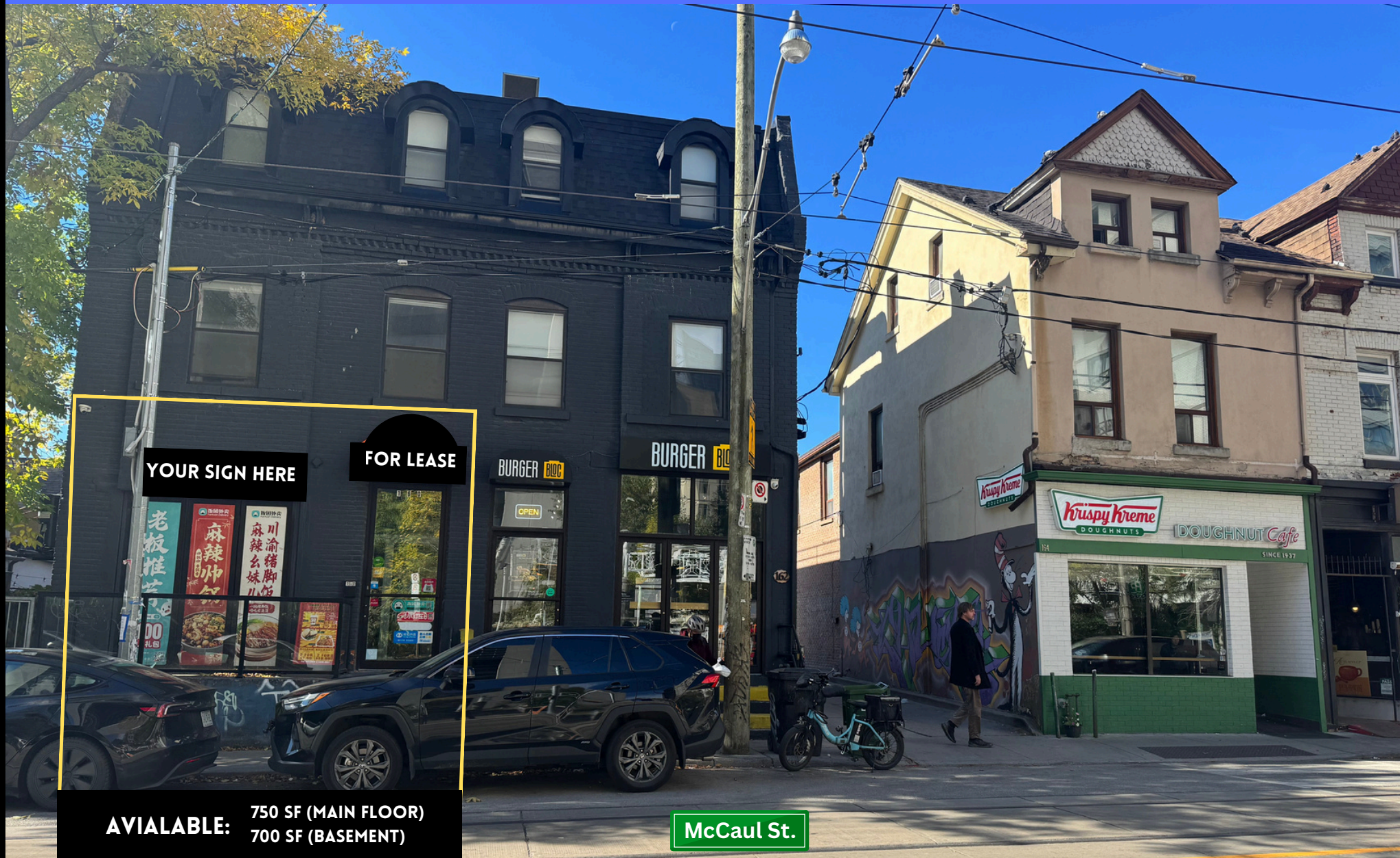


**RESTAURANT-READY
RETAIL FOR LEASE**

**160 MCCAUL STREET
TORONTO, ON**



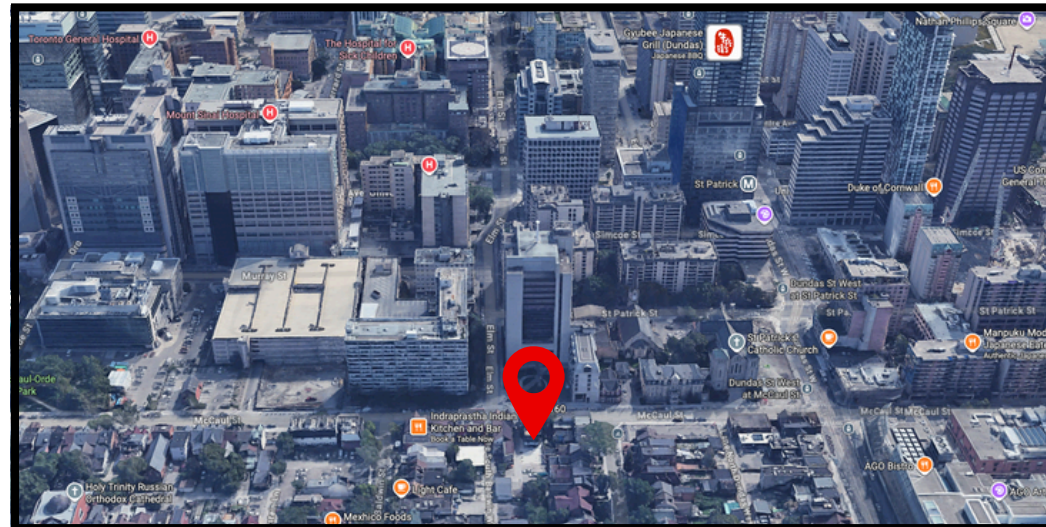
AVAILABLE: 750 SF (MAIN FLOOR)
700 SF (BASEMENT)

McCaul St.

PROPERTY HIGHLIGHTS

Restaurant-Ready Retail Space For Lease | 160 McCaul St, Toronto

- Step into 750 SF of prime, ground-floor retail in a striking three-storey brick & beam building that radiates character, style, and visibility.
- Currently home to Lazy Shack (Asian QSR), this restaurant-ready space is fully equipped with an exhaust hood, walk-in cooler, and freezer — the perfect foundation for your next bold concept.
- The interior is bright, open, and full of life, boasting 10.5 ft ceilings, a wide storefront, and tons of natural light. Plus, enjoy 700 SF of basement space with 8 ft ceilings, ideal for storage, prep, or back-of-house operations, complete with rear delivery access and 600 V / 200 Amp / 3-Phase power.
- Situated in the heart of Downtown Toronto, this space is surrounded by nonstop activity and demand — steps from Mount Sinai, Princess Margaret, SickKids, Toronto General, University of Toronto, OCAD University, AGO, and St. Patrick Subway Station.
- Available Retail: 750 SF + 700 SF Basement
- Net Rent: Call Broker
- T.M.I.: \$20.00 PSF (2025)
- Neighboring tenants include: Krispy Kreme, Jimmy's Coffee, Midi Bistro, TD Bank & more.



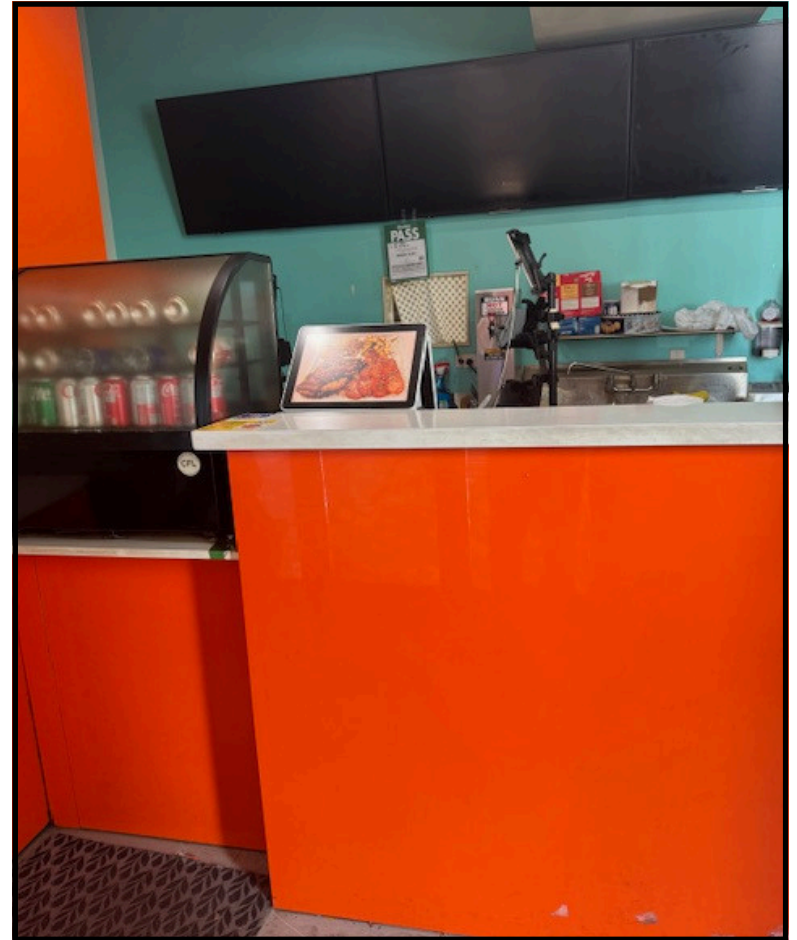
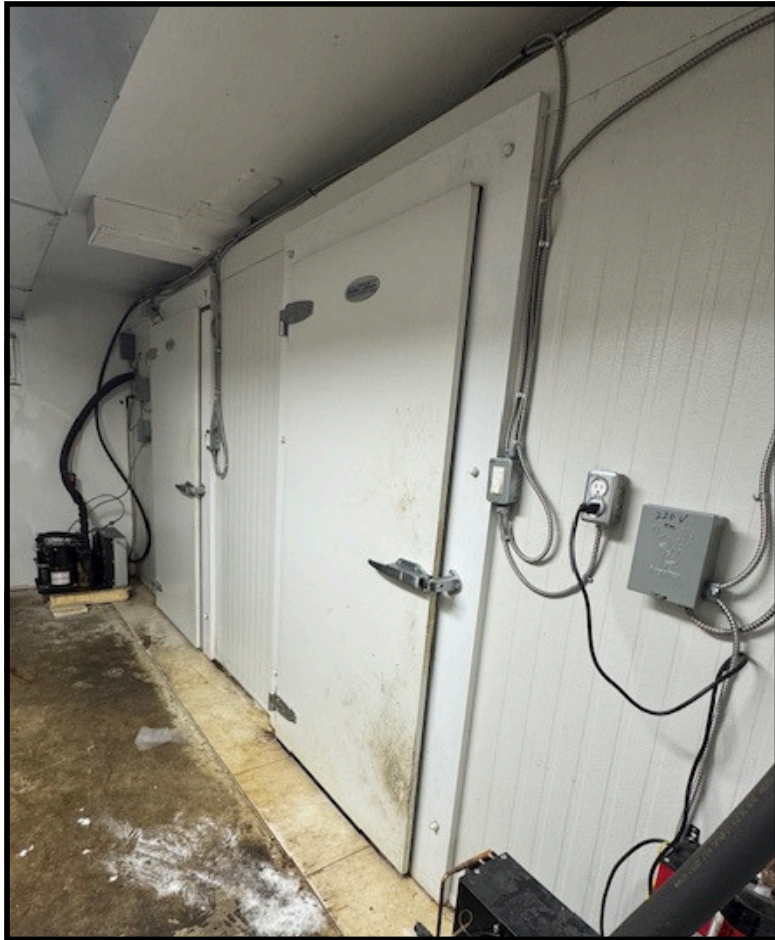
INTERIOR PHOTOS



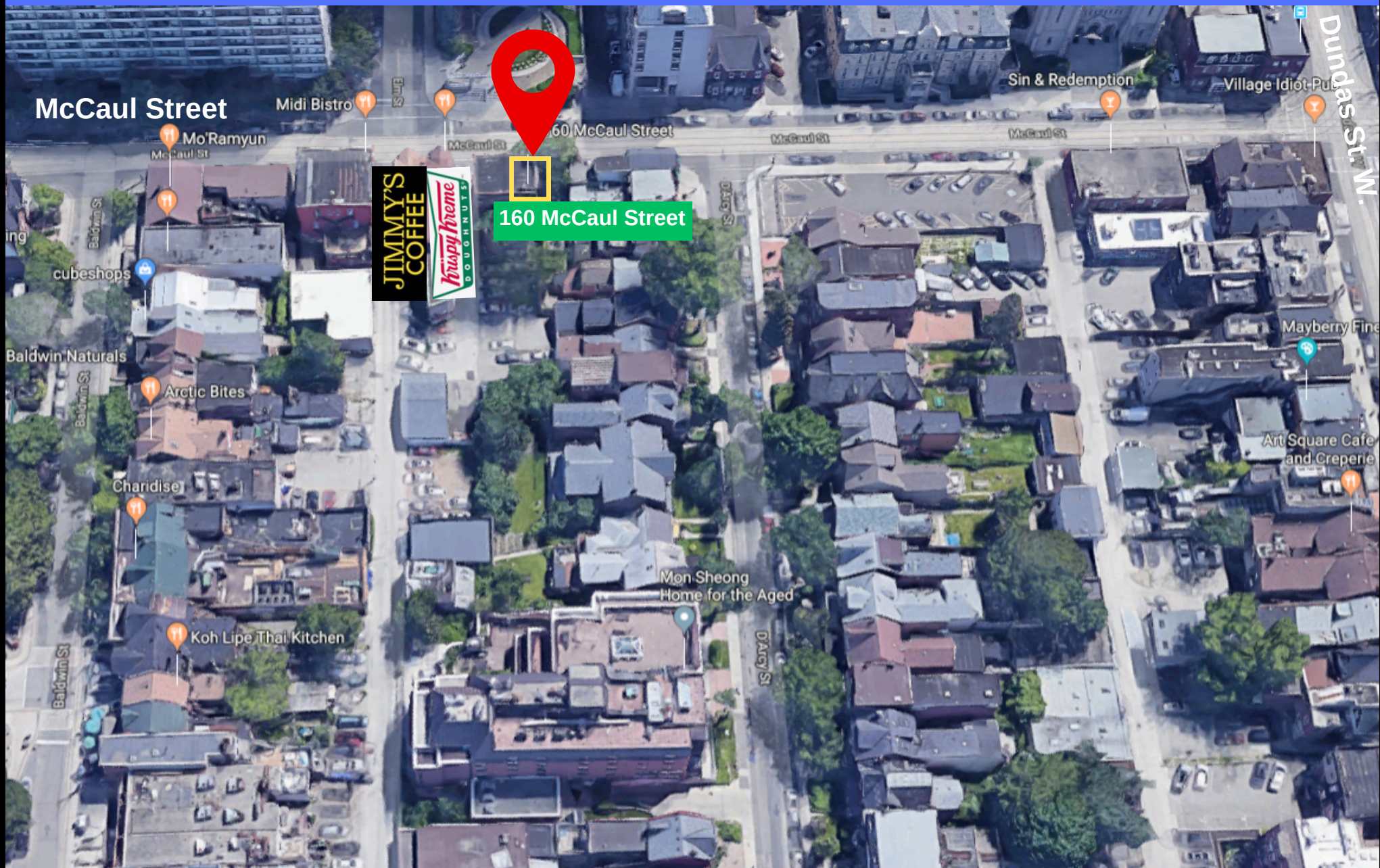
INTERIOR PHOTOS



INTERIOR PHOTOS



RETAIL SITE OVERVIEW



CONTACT INFORMATION

160 MCCAUL STREET TORONTO, ON



YOUR SIGN HERE

FOR LEASE

BURGER BLOC

BURGER BLOC

OPEN

Krumpy Kreme
DOUGHNUTS

Krumpy Kreme
DOUGHNUTS

DOUGHNUT Cafe
SINCE 1937

AVAILABLE:

750 SF (MAIN FLOOR)
700 SF (BASEMENT)

McCaul St.

Shawn Abramovitz, BA

CEO | Broker of Record

416.900.3878 ext. 102

shawn@pivotalcommercialrealty.com