



**CUEVA HOMES**  
OWN YOUR FREEDOM

---

**MODEL: SOLACE**

---



Discover the structure, finishes, and smart systems behind each Cueva home – engineered for durability, comfort, and modern living.

SOLACE

# BUILDING ENVELOPE

“Solace puts big-home comfort into a small-home footprint. The bright, open living area flows into a full kitchen with quartz counters and Germany made stainless-steel appliances, so cooking still feels easy and fun. A serene bedroom, wall-to-wall wardrobe, and in-suite laundry complete the experience of true premium-style living.

## Wall System

- **Steel Stud Framing** – Lightweight, durable, and precision-built for structural integrity
- **4" Closed-Cell Spray Foam** – Superior insulation and airtightness for year-round comfort
- **OSB Sheathing** – Adds strength and structural rigidity
- **Waterproof Membrane** – protects against moisture infiltration and enhances envelope durability.
- **2" Rigid Exterior Insulation** – Continuous thermal protection, reducing heat loss
- **Rain Screen System** – Promotes ventilation and prevents moisture buildup
- **Architectural Cladding** – Sleek, durable exterior finish built to withstand the elements



## Floor System

- **Structural Steel Frame** – Engineered for strength, stability, and long-term durability
- **6" Closed-Cell Spray Foam Insulation** – Delivers exceptional thermal performance and airtightness
- **Cement Fiber Board Subfloor** – Moisture-resistant, durable, and fire-rated surface
- **Premium 6mm SPC Flooring** – Clean, modern design with UV, water and scratch resistance



## Roof System

- **Light-Gauge Steel Joists** – Strong, lightweight support for long-span durability
- **6" Closed-Cell Spray Foam Insulation** – High-performance thermal barrier with excellent airtightness
- **OSB Sheathing** – Provides structural rigidity and load distribution
- **Waterproof Membrane** – Shields against moisture and enhances roof longevity
- **3" Rigid Exterior Insulation** – Continuous insulation layer for superior energy efficiency
- **Standing Seam Metal Roof** – Sleek, modern finish that's weather-resistant and built to last



## Exterior Finishes

### 14ga (2mm) aluminum panel siding and sloped roof

- Roofing Color: Black
- Wall Panel Color: Gun Metal Gray

### Wood accents

- Vinyl Boards
- Color: White Oak

### Exterior doors and windows

- Insulated steel entry door with a smart keyless entry system

### Glazing

- Triple Pane Windows and Sliders
- Privacy tinted glass and low E treatment that improve both privacy and energy efficiency

### Exterior wall lighting

- Included



# Interior Finishes







**CUEVA HOMES**  
OWN YOUR FREEDOM

# Homes That Adapt to Your World

Cueva homes are more than buildings—they're adaptable living spaces that fit your needs and your environment. Whether you're looking to maximize urban space, boost tourism potential, or uplift a remote community, our modular approach delivers beauty, comfort, and speed.



## **Urban Solutions**

Laneway homes for flexible, space-saving rentals



## **Tourism Innovation**

Modern accommodation solutions that are quick to deploy and beautifully designed.



## **Community Impact**

Quality housing for remote regions in need of rapid, sustainable solutions

Dimensions & Layout:  
1 bedroom and 1 bathroom  
495 sq ft- 8' - 10" ceiling height



**General timeline:**

**Permitting:** 4–12 weeks

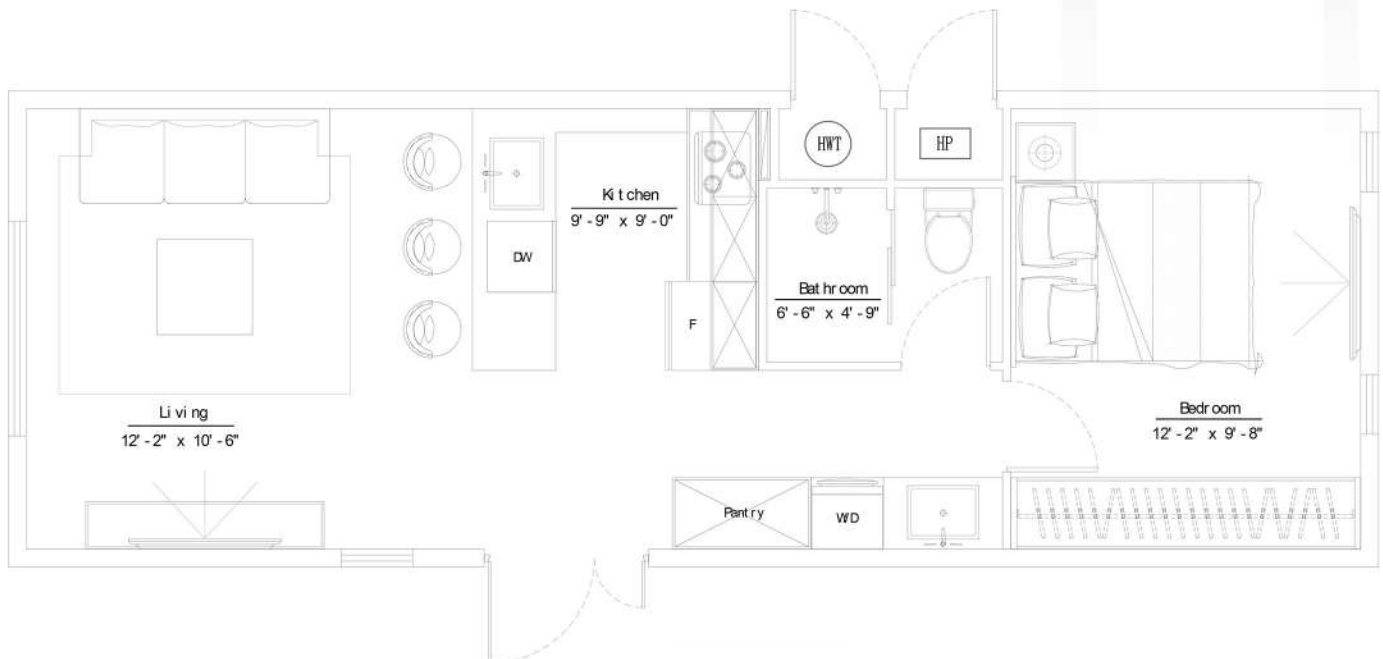
*(depends on city or regional district backlogs)*

**Site Prep:** 2–6 weeks after permits are in place

**Shipping & Setup:** 1–2 weeks once site is ready

End-to-end, from permit application to delivery,  
you're looking at approximately 3–6 months.

# Homes that connect modern living with true freedom.



**SOLACE FLOOR PLAN**





**Designed  
for **Impact.**  
Built for **Life.****



Sales: [info@cueva.ca](mailto:info@cueva.ca)  
More Information: <https://www.cueva.ca/contact>

