



CUEVA HOMES
OWN YOUR FREEDOM

MODEL: EMBER

Discover the structure, finishes, and smart systems behind each Cueva home – engineered for durability, comfort, and modern living.



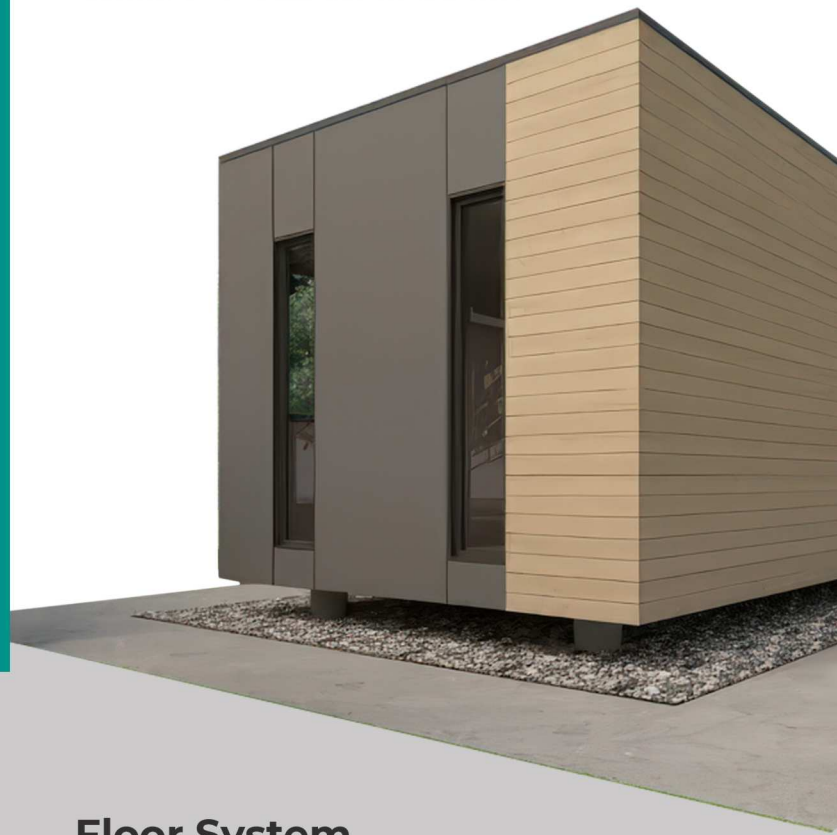
EMBER

BUILDING ENVELOPE

Ember proves you can fit real family living into less than 500 square feet. Two true bedrooms—each with its own door and closet—let kids, roommates or guests enjoy privacy. The open galley kitchen features full-size appliances and a breakfast bar that seats four, making shared meals simple.

Wall System

- **Steel stud framing:** Lightweight, durable, and precision-built for structural integrity
- **4" closed-cell spray foam:** Superior insulation and airtightness for year-round comfort
- **OSB sheathing:** Adds strength and structural rigidity
- **Waterproof membrane:** Protects against moisture infiltration and enhances envelope durability.
- **2" rigid exterior insulation:** Continuous thermal protection, reducing heat loss
- **Rain screen system:** Promotes ventilation and prevents moisture buildup
- **Architectural cladding:** Sleek, durable exterior finish built to withstand the elements



Floor System

- **Structural Steel Frame** – Engineered for strength, stability, and long-term durability
- **6" Closed-Cell Spray Foam Insulation** – Delivers exceptional thermal performance and airtightness
- **Cement Fiber Board Subfloor** – Moisture-resistant, durable, and fire-rated surface
- **Premium 6mm SPC Flooring** – Clean, modern design with UV, water and scratch resistance



CUEVA HOMES
OWN YOUR FREEDOM

Roof System

- **Light-Gauge Steel Joists** – Strong, lightweight support for long-span durability
- **6" Closed-Cell Spray Foam Insulation** – High-performance thermal barrier with excellent airtightness
- **OSB Sheathing** – Provides structural rigidity and load distribution
- **Waterproof Membrane** – Shields against moisture and enhances roof longevity
- **3" Rigid Exterior Insulation** – Continuous insulation layer for superior energy efficiency
- **Standing Seam Metal Roof** – Sleek, modern finish that's weather-resistant and built to last



Exterior Finishes

14ga (2mm) aluminum panel siding and sloped roof

- Roofing Color: Black
- Wall Panel Color: Gun Metal Gray

Wood accents

- Vinyl decking boards
- Color: White Oak

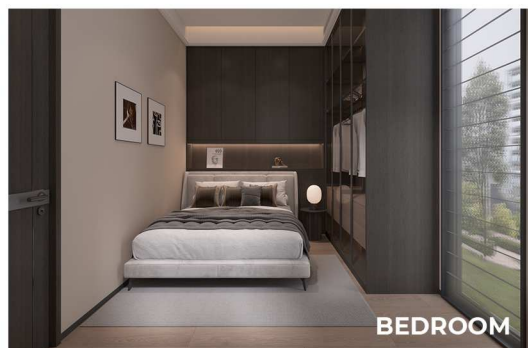
Exterior doors and windows

- Insulated steel entry door with a smart keyless entry system

Glazing

- Triple pane windows
- Privacy tinted glass and low E treatment that improve both privacy and energy efficiency

Interior Finishes





CUEVA HOMES
OWN YOUR FREEDOM

Homes That Adapt to Your World

Cueva homes are more than buildings—they're adaptable living spaces that fit your needs and your environment. Whether you're looking to maximize urban space, boost tourism potential, or uplift a remote community, our modular approach delivers beauty, comfort, and speed.



Urban Solutions

Laneway homes for flexible, space-saving rentals



Tourism Innovation

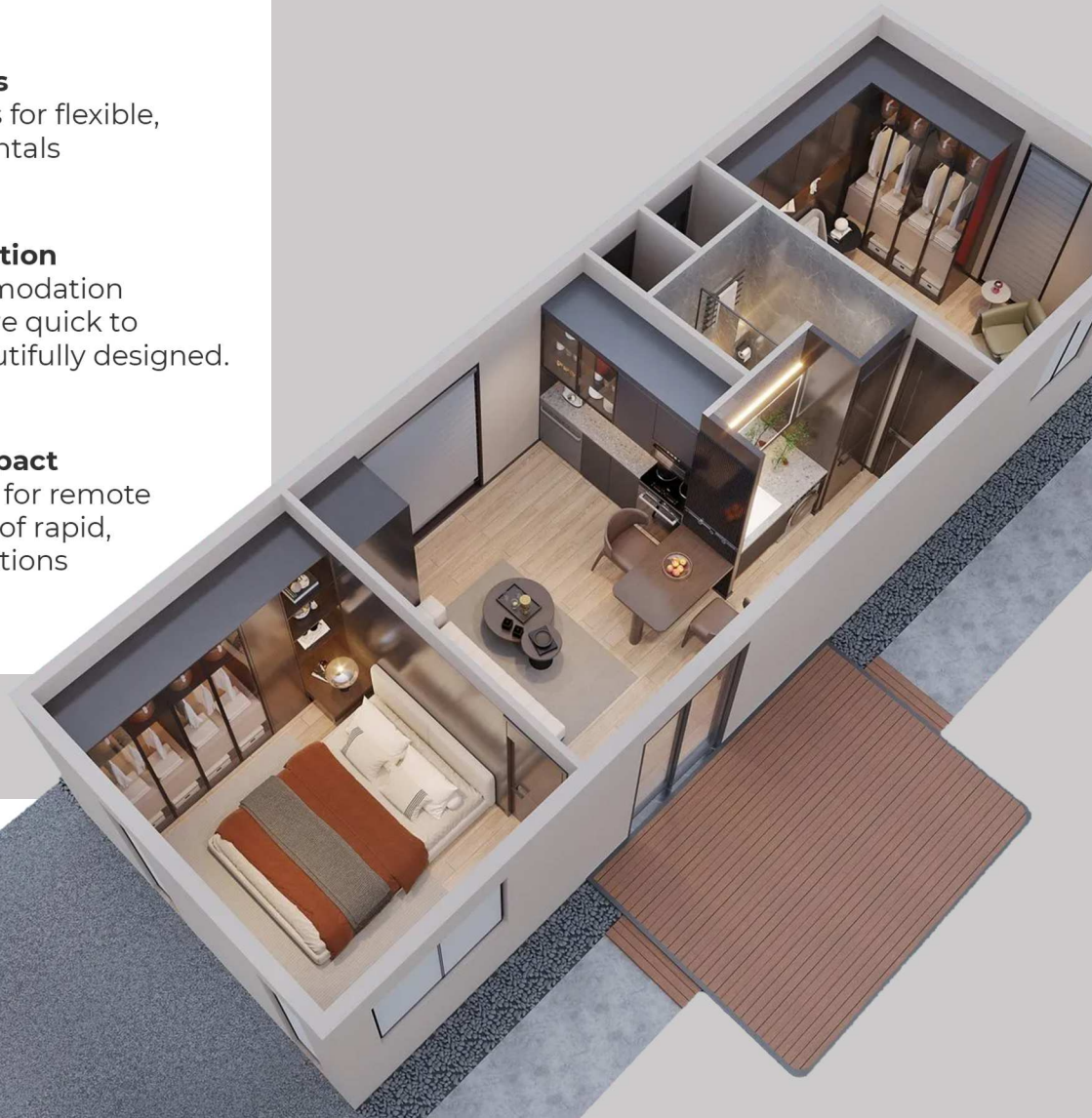
Modern accommodation solutions that are quick to deploy and beautifully designed.



Community Impact

Quality housing for remote regions in need of rapid, sustainable solutions

Dimensions & Layout:
2 bedroom and 1 bathroom
495 sq ft - 8'-10" ceiling height



General timeline:

Permitting: 4–12 weeks

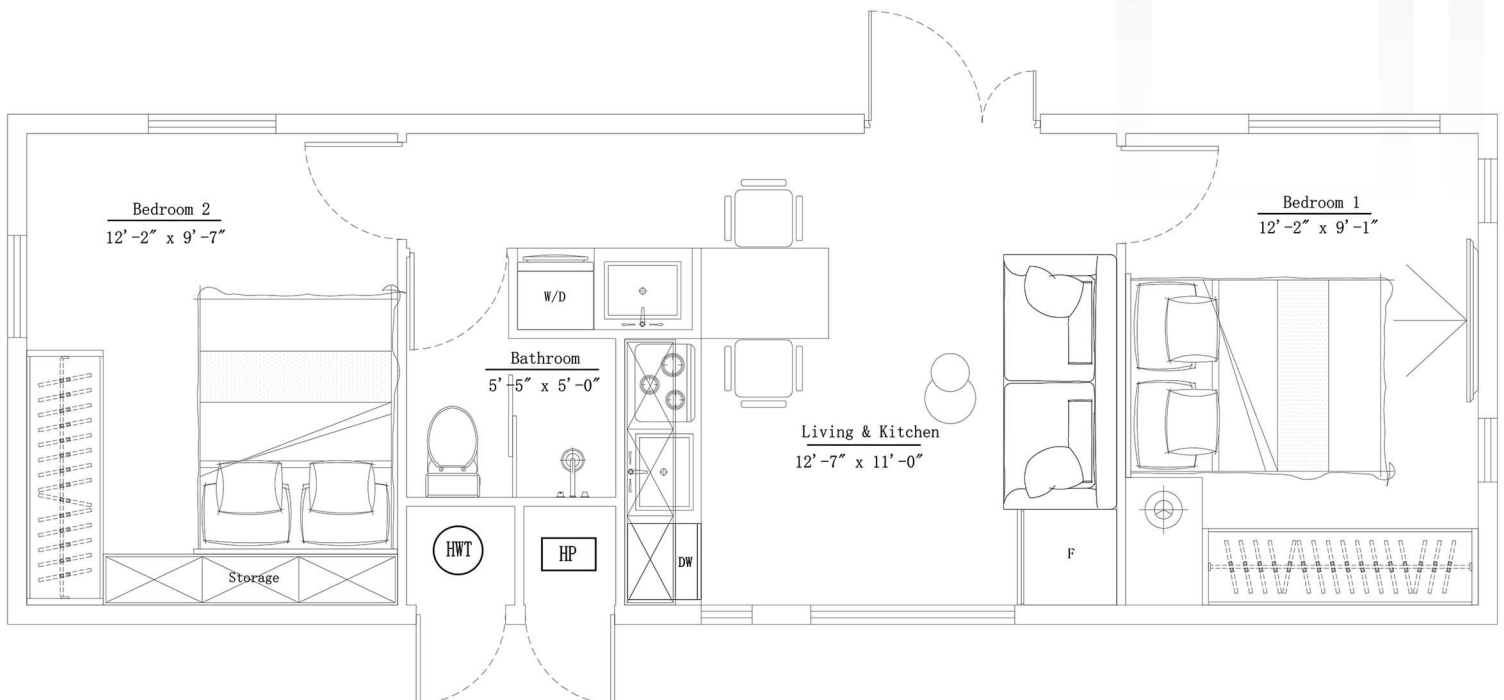
(depends on city or regional district backlogs)

Site Prep: 2–6 weeks after permits are in place

Shipping & Setup: 1–2 weeks once site is ready

End-to-end, from permit application to delivery,
you're looking at approximately 3–6 months.

Homes that connect modern living with true freedom.





Embrace **True Freedom** with Cueva



Sales: info@cueva.ca
More Information: <https://www.cueva.ca/contact>

