

NATURA D5 1.80

Countertop Water Purification System Cut Sheet



Dimensions	Refrigeration / Carbonation Unit (NWSD)	Filtration Kit (NWFS)
Depth	26.3" (670.0 mm) including drip tray	6.0" (152.4 mm)
Width	17.6" (447.5 mm)	16.4" (417.0 mm)
Height	20.0" (508.0 mm) total height with faucets	14.4" (365.8 mm)
Weight	75 lbs (34 kg)	18 lbs (8.2kg)



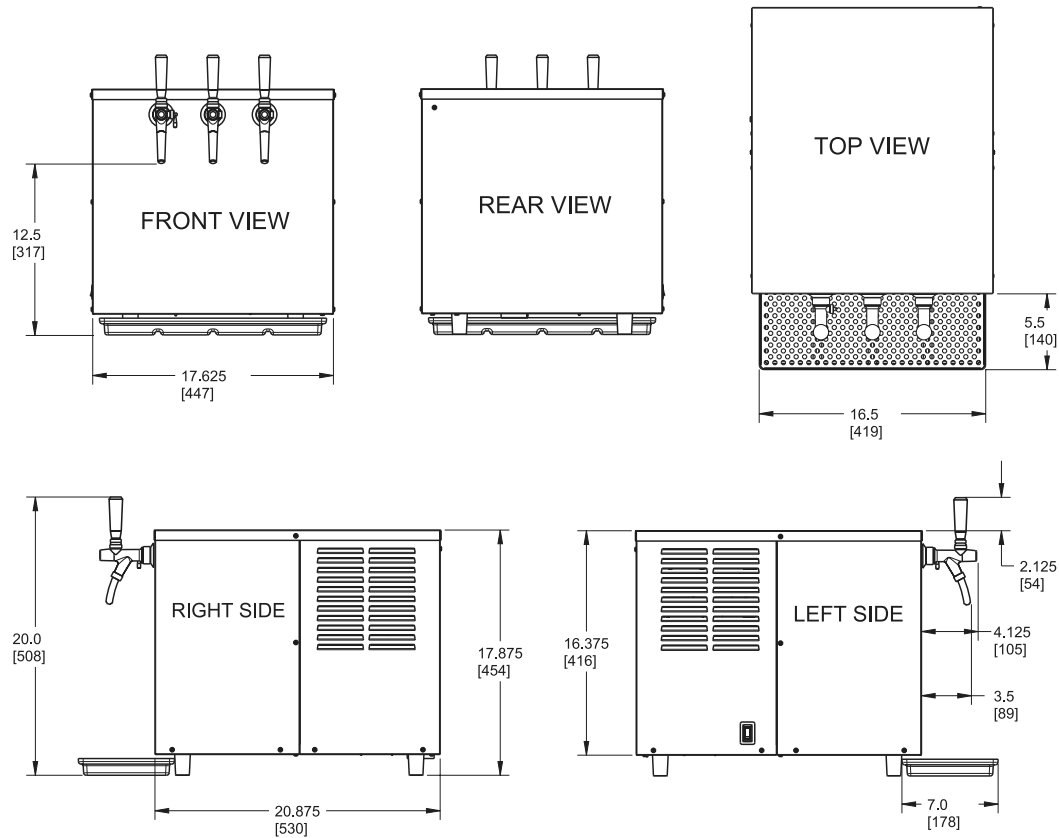
- Chilled Still
- Chilled Sparkling
- Ambient

- Countertop System
- 80 L/Hr. Chilled Sparkling, Chilled Still and Ambient Water
- Ideal for Restaurants, Hotels, Offices, Health and Wellness Spas, etc.

Technical Information

Water Filtration System	3-Stage Filtration: Sediment; Carbon (Chlorine, Taste, Odor); Nanoceram (Lead & Cysts)
Machine Configuration	1 Filtration Kit (NWFS) + 1 Remote Refrigeration / Carbonation Unit (NWSD)
CO2 Cylinder (Not Provided By Natura)	Sold separately - connected with a 1/4" JG tubing and pressure regulator (included) to the Refrigeration / Carbonation unit (NWSD)
Material	Stainless steel
Maximum Chilled Carbonation Capacity	80 liters per hour
Maximum Flow Capacity	150 liters per hour
Avg. Time To Fill A One Liter Bottle	15 sec
Standard Oper'g Water Supply Pressure Psi (bar) - regulated With A Pressure Regulator (included)	40 psi min. - 100 psi max. (2.75 - 6.9 bar)
Electrical (Volts/Hertz/Amps)	110-120V / 60HZ / 6 AMPS (US) 220-230V / 50HZ / 2.5 AMPS (INT'L)
Electric Power Consumption (approximate)	240 Watts Normal Oper'g/ 10 Watts Idle (US) 340 Watts Carbonation Oper'g (US) 170 Watts Normal Oper'g/ 9 Watts Idle (INT'L) 290 Watts Carbonation Oper'g (INT'L)

Technical Drawing



1. Water Supply:

1.1 Water supply shut-off valve that can adapt to a 3/8" compression fitting within 5' (1.5m) of the machine location

1.2 Shut-off valve that will only be used for the Natura unit. Neither the water line nor the shut-off valve can be shared with espresso machines, coffee makers, ice machines, etc.

1.3 Maximum inlet water temperature of 75°F (24°C). High temperature will affect chilled water capacity

1.4 Minimum inlet water flow rate of 2.2 gallons/min

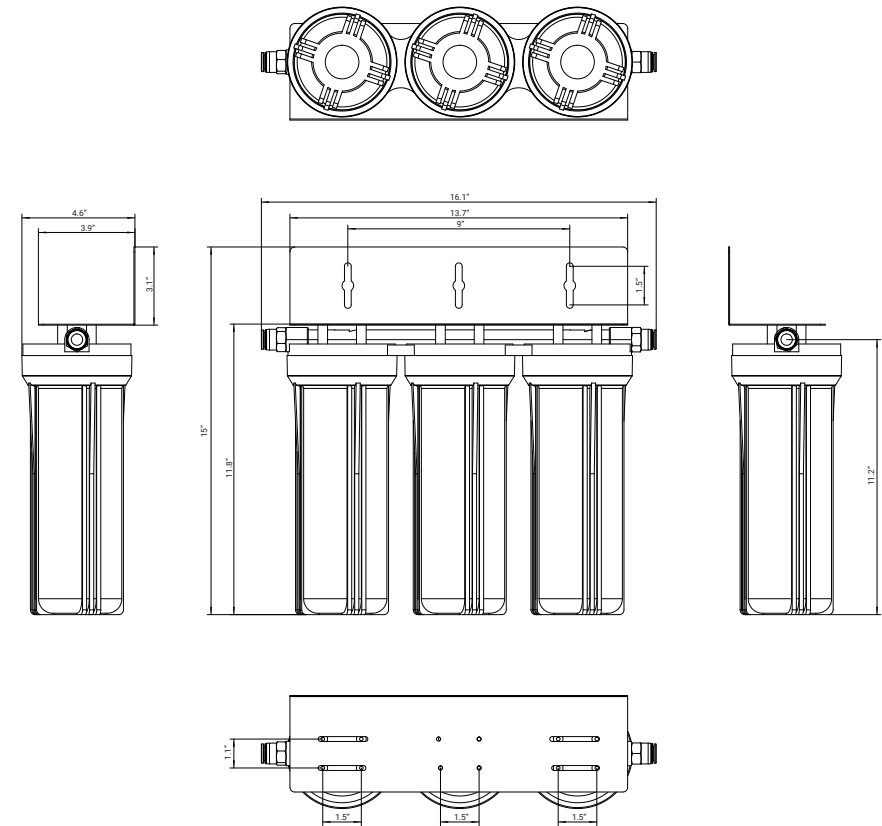
1.5 Water pressure range: 45 PSI - 120 PSI

2. Dedicated CO2 + Electrical Supply:

2.1 Dedicated CO2 canister on-site within 5' (1.5m) of machine location (standard tanks are 5–50 lbs UN1013 Food Grade gas)

2.2 Electrical supply available within 5' (1.5m) of machine location: 115V for B5/B5U/D5/D5U; 230V for B5i/B5Ui/D5i/D5Ui

Filter Assembly



3. For Bulk CO2 Connection Only (to be hooked up by CO2 supplier):

3.1 Dedicated CO2 connection line from the bulk CO2 canister requires the bulk tank to have a dedicated CO2 regulator

3.2 Dedicated CO2 connection line from bulk CO2 canister requires a different regulator (NOT SUPPLIED BY NATURA) within 5' (1.5m) of the machine location

3.3 Dedicated CO2 connection line from bulk CO2 canister requires a minimum pressure rating of 100 PSI

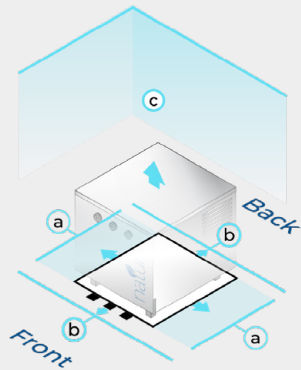
3.4 Dedicated CO2 connection line from bulk CO2 canister requires the pressure regulator set at 60 PSI. Setting higher than 60 PSI will damage the unit and void the warranty

Required Ventilation Clearances:

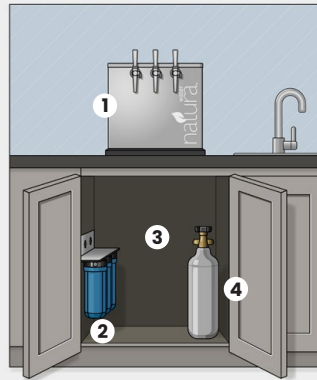
- (a) 6.0" of clearance on both sides of the unit
- (b) 2.0" of clearance in front and at the back of the unit
- (c) 14.0" minimum clearance above the unit for removing the top to (i) perform routine maintenance and to (ii) enable technician to check water reservoir level during preventative maintenance visits

Note: Please remember to factor CO2 canister and Filtration Kit assembly into clearances.

Isometric View Required Clearance (Reference Only)



1. Natura D5 Water System
2. Filtration Kit
3. Water Line (not provided)
4. CO2 Tank (not provided)



3 Stage Filtration System

