

WOMANSPACE

yourguide™

SPRING-SUMMER 2026



Connecting, empowering, creating and transforming our world – one woman at a time.

2026 Glitzy Garage Sale



Friday & Saturday, May 29-30, 9:00a-5:00p
Sunday, May 31, 9:00a-1:00p



Back by popular demand...this mega-sale includes an air-conditioned boutique featuring jewelry, designer clothing, artwork and art supplies. Clothing items for men, women, and children can be found in the spacious Anjali Pavilion. And, much more is available at rock-bottom prices in other tents and garage!

WE ARE ACCEPTING: (ALL MUST BE CLEAN & USABLE ITEMS)

- Books, Videogames, DVDs, Records
- Working small appliances, everyday dishes, glasses, pots & pans
- Art supplies, artwork, frames, craft supplies, seasonal items (NO TREES),
- Purses, belts, scarves, hats, socks, shoes, boots, jewelry
- Clothing for men, women, children & infants (ON HANGERS, PLEASE)
- Pack-n-Plays, highchairs, baby items (NO CAR SEATS or MATTRESSES)
- Toys, games, puzzles, bikes, strollers, swings
- Outdoor furniture, grills, tools, hardware in decent condition
- Sporting goods, SMALL fitness equipment, clean pet items
- Live plants, garden tools & decor

WE ARE NOT ACCEPTING: (SERIOUSLY, DO NOT BE THAT ONE PERSON)

- CDs, VHS or Cassette tapes, computers, monitors, printers, stereo units, TVs
- Textbooks, encyclopedias, dictionaries, mags, books with mold or water damage
- Traverse rods or curtain rods, rugs, linens, luggage, Christmas trees
- Weapons, ammunitions, chemicals, tires, car batteries, specialized "oddities"
- Furniture, large lamps, half used candles, large unique equipment
- Mattresses, infant/toddler car seats, used/opened/expired personal care items

FOR DONATION DETAILS, VISIT womenspace-rockford.org.

If in doubt about an item, call Elaine at 815-871-1617 or email a picture to: elaine@womenspace-rockford.org.

Drop Off Donations May 18-26
 (no sooner; no later; restrictions apply)

MANY VOLUNTEERS NEEDED!

Do you love to work garage sales and have first choice at discovering treasures? Never worked a garage sale? Whatever your past experience – we NEED YOU as often as possible between May 18-31, to help set up, sort, price and staff our most famous, rewarding fundraiser. Glitzy made thrifting fun even before it became wildly popular. There are SO MANY WAYS you can find a perfect match for your interests & talents!

Some examples: You can

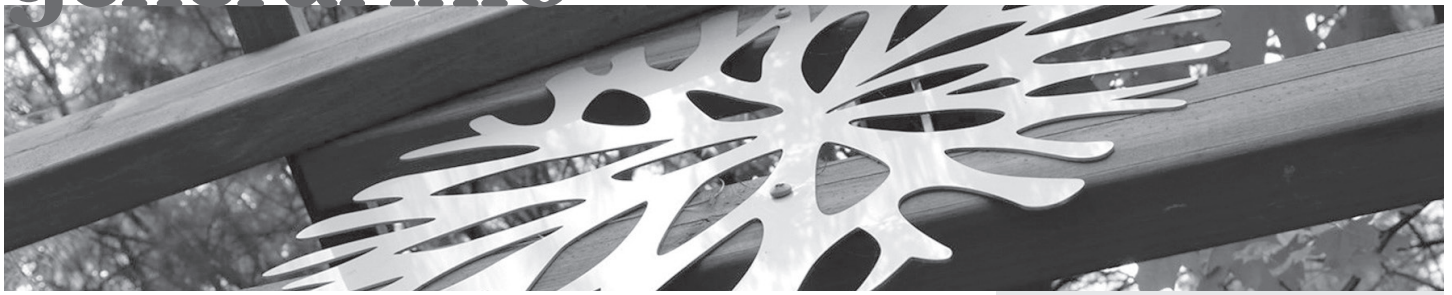
- Choose a specific area to sort or work: clothing, accessories, housewares, books, toys, sports, plants, art. (Those are just a sampling; there are others.)
- OR you can move from area to area, be flexible and fill in wherever needed.
- OR you can bring lunch to feed around 20 hungry volunteers each day. (And, volunteers can look forward to enjoying these delicious lunches while chatting with others.)
- OR you can be the kitchen volunteer who sets out the food, sees that our volunteers are "fed and watered," keeps the kitchen and interior clean and the fridge stocked each day.
- OR you can work behind the scenes, making phone calls to get volunteer slots filled.
- OR you can loan us some tables, shelving, racks etc.
- OR you can loan us some teenagers and husbands (tall & strong) to help set up and clean up.
- OR you could become a cashier, a bagger, an errand runner, a collector of bags. Or... Or... Or...

The possibilities are many. If you commit your time, you will be helping Womenspace tremendously. If you have ANY Glitzy questions, call Elaine, Chair of Glitzy 2026, at 815-871-1617.

Use your Smartphone's camera to scan the QR code to volunteer.



general info



Mission & Philosophy Connecting, empowering, creating and transforming our world – one woman at a time. Womanspace offers programs to enhance the body, mind and spirit, with a focus in the creative arts, holistic health, interfaith exploration, and environmental stewardship.

Womanspace believes every person is a spiritual being, having within them the potential for health, self-reliance, creativity, wisdom and responsible caring. By enhancing her potential, she enriches her own life, the life of her family, and the lives of others. Through the strong, healthy, self-development of each individual, the world we live in is made a stronger, healthier, and more peaceful planet.

Womanspace offers programs that stimulate awareness, develop competence, encourage creativity, and generate healthy decision-making. We provide support that offers honesty, compassion, challenge, and spiritual growth. Womanspace works cooperatively with others, striving for collaborative partnerships in our endeavors.

History Womanspace was co-founded in 1975 by Dorothy Bock and Elaine Hirschenberger, members of the School Sisters of St. Francis. The Center is governed by a volunteer Board of Directors in cooperation with the Executive Director. The seven-acre campus includes two art studios, an outdoor pavilion, a yoga studio and library, a gallery, Gallery2Go gift shop, beautiful gardens and a labyrinth. Womanspace is a not-for-profit 501(c)(3) organization.

Accessibility A ramp is available in the garage for access to the offices and events in the Loretta & William Reif Gallery. The Yoga Studio is currently accessible only to those who can walk stairs. New Dimensions Upper Studio is fully accessible. The Clay Studio has a chair lift.

Hours Office hours are Monday-Thursday, 10:00a-5:00p. Classes are scheduled at various hours, seven days a week. Our gardens, labyrinth and campus are open to the public everyday during daylight hours.

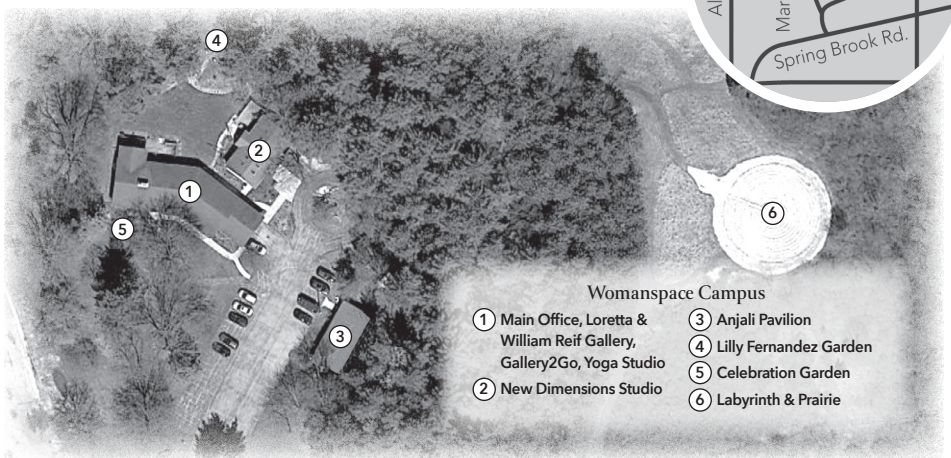


Table of Contents

Glitzy Garage Sale	2
General Information.	3
Note From the Director.	4
FUNdraisers	5
Community	6-7
Book Groups.	8-9
Supper & Film.	10
Mind & Body	11-13
Movement.	14
Mini-Retreats.	15
Galleries, Open Studio.	16
Scholarships	17
Clayworks	18-19
Painting	20
Fine Crafts	21-23
Kids & Families	22-24
Membership Form	25
Registration Form & Policies.	26
Labyrinth	27

Womanspace reserves the right to use photographic images taken at programs, events and classes for promotional purposes.

Womanspace Your Guide, Vol. 51 No. 2. Published by Womanspace, Inc., Rockford, Illinois, and mailed twice a year. Editors: Elaine Hirschenberger, Nicole Landreth Postage & fees paid - Rockford, IL Post Office.

Cover: A reflection invitation. Where are you being invited to grow? Who are the roots and branches in your community helping hold you steady as you reach toward the light? Grab a journal or a friend to reflect.

from the executive director



Dear Friends,

The days are growing longer and brighter, and I feel that shift in my spirit as well. Watching the natural world wake and bloom again, reminds me that darkness is part of the natural cycle, that we are a part of that cycle, and that light, love, and new growth are quietly gathering strength, preparing to break through.

I've been reflecting on what it means to show up in a world that often feels dark and overwhelming. Recently, I was reminded of something vital: we all have an obligation to push back on the temptation to despair. Not with denial or naïveté, but with courage, imagination, and action. When we refuse despair, we make room for possibility – and for the work of shaping something better together.

What does it mean to keep showing up? For our obligations and responsibilities, for our friends and families, and for ourselves? I think this looks different in every life, and different at every phase and stage of living. And that's ok.

At Womanspace, our work has always been rooted in the belief that a better world is not only possible, but worth imagining – and worth building together. From the beginning, this organization has believed in the power of gathering, reflection, creativity, and honest conversation as catalysts for personal and collective change. Our founders were women of bold vision and brave optimism. They understood that creativity, compassion, and deep listening are not luxury activities, but essential acts of resistance against resignation. They believed that thinking differently and feeling deeply are powerful forces for change.

You will see that spirit reflected throughout our Spring and Summer offerings. This season includes long-standing community favorites like Bookwoman and Supper & Film, alongside creative workshops, wellness and movement practices, support groups, skill-building classes, and opportunities simply to gather and be together. Across all of it runs a shared thread: curiosity, care, learning, and connection. You may also notice new pop-up programs appearing throughout the season – offerings that respond to the moment, the energy of our community, and opportunities as they arise.

You'll soon begin to notice some changes in how you interact with Womanspace itself. We are in the process of refreshing our website and modernizing our systems to make registration, communication, and engagement clearer and more intuitive. These behind-the-scenes shifts are part of a larger commitment to building structures that support growth, accessibility, and sustainability – so that the heart of this place can thrive.

As I continue firming my footing in my role as Executive Director, I see this season as both a continuation and a beginning. Over the next few years, my vision for Womanspace is rooted in honoring our history while strengthening our foundation, expanding our relevance, deepening our impact, and affirming our role as a space for reflection, thought leadership, and meaningful community life.

Thank you for being here. Thank you for showing up – for yourselves and for one another. In choosing connection over isolation and hope over despair, we continue the work that has always defined Womanspace.

In community,

Nicole Landreth, Executive Director

Board of Directors

Catherine Forslund, *President*
Katrina Olson, *Secretary*
Denise Osadjan, *Treasurer*
Marsha Hosfeld, *Past President*
Audrey Falzone
Laura Gorton
Tina Hallberg
Mary Jo Hare
Cristi Hopp Kniess
Barbara McDonald
Sallyann Roberts
Usha Sundaram
Nicole Landreth, *Ex Officio*

Staff

Nicole Landreth, *Executive Director*
Pat Lai, *Designer/Office Manager*
Cherie Heck, *Bookkeeper*
Alondra Lavariega, *Program Coordinator*
Denise Colin, *Marketing Coordinator*
Sophia Berger, *Youth Media & Art Intern*
Elaine Hirschenberger, *Director Emerita*


Land Acknowledgement

Womanspace acknowledges that our beautiful campus sits upon land once inhabited by the First Nation Peoples of the woodland tribes, including seven indigenous nations with historical ties to this region of Rockford – the Kickapoo, Potawatomi, Sauk, Meskwaki, Miami, Peoria, and Sioux. When guests come to visit our campus, we invite them to take a moment of silence to honor both the land and the First Nation Peoples who cared for and preserved it. We strive to be intensely connected to nature and at peace with this beautiful land.


We recognize that the First Nation Peoples were forcibly removed from these lands that were their traditional birthright, that they faced centuries of struggle for survival and identity in the wake of that dispossession. We regret the ways our society has erased their stories and cultures. We ask for wisdom in sharing and fostering greater understanding and celebration of indigenous communities in Illinois.

support our FUNdraisers

We love coming together at our fundraiser events – not just to raise support, but to celebrate our shared purpose and strengthen the community that makes everything we do possible. Please join us!



womanspace TADMORE
TAILORING AND ALTERATIONS



RESTYLE
the Runway

FASHION SHOW & LUNCHEON
March 7, 2026, 11:00 am-3:00 pm
Regents Hall at Rockford University,
5050 E State St., Rockford, IL

Enjoy a delicious lunch, sip libations,
enter to win the 50/50 raffle, and
browse the many vendor tables –
all for the best cause in town – **Womanspace**.

Individual ticket - \$75 | Table of 8 - \$550
Space is limited. Purchase tickets and select a
luncheon choice.



womanspace



Bloom Fest

Spring Art & Wellness Festival
Saturday, May 9, 10:00a-4:00p
at Womanspace, 3333 Maria Linden Dr., Rockford

An Festival Full of Locally-Made Goods

- Plant Sales • Family Activities • Community Art Project
- Food & Beverage Trucks • Wellness Experiences
- Beautiful, Peaceful Grounds • Walking Labyrinth

womanspace-rockford.org

Sponsored by
kelley's market | **100 YEARS**
A Valley Women's Cooperative



Beat
— THE —
HEAT

ONLINE AUCTION
JULY 20, 12:00p-JULY 31, 9:00p

For over 50 years, Womanspace has provided programming in the creative arts, holistic health, self-development and social activism for women of diverse socio-economic backgrounds.

We are asking for donations in the form of a service, an experience, a gift certificate, or a unique item to help us raise funds to continue these programs.

Please drop off items and gift certificates to the main office no later than July 1.

If you have any questions pertaining to items, email Marsha Hosfeld, mahosfeld@yahoo.com.



One
ENCHANTED
Evening

SEPTEMBER 18, 6:00-9:00p

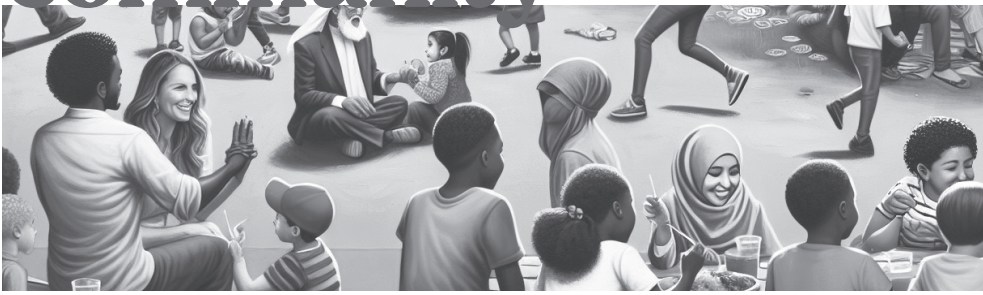
An evening of musical & visual enchantment awaits in the Womanspace gardens, forests and labyrinth. Twinkling lights, music and camaraderie abound as the day dims into the mystery of sunset.

Wine, light hors d'oeuvres, and more surprises are revealed, awakening one to the magic of this time and place.

All proceeds benefit Womanspace.

community

There is no reduction in fees if you are unable to attend all scheduled classes in a series.



Committee Chairwomen

BloomFest Committee

Audrey Falzone,
audreyfalz99@gmail.com

Facilities Committee

Pat Lai, pat@womanspace-rockford.org

Gallery Committee

Cherie Heck,
cherie@womanspace-rockford.org

Grounds Committee

Anne Godin, agodin7733@aol.com

Glitz Garage Sale

Elaine Hirschenberger,
elaine@womanspace-rockford.org

Membership Committee

Katrina Olson,
kmlolson257@gmail.com

Online Auction Committee

Marsha Hosfeld,
mahosfeld@yahoo.com

Restyle the Runway Committee

Barbara McDonald,
bkmcDonald1953@gmail.com
Katrina Olson,
kmlolson257@gmail.com

Scholarship Committee

Elaine Hirschenberger,
elaine@womanspace-rockford.org

Social Outreach Committee

Kay Strand, Kstrand4@aol.com

Something About Merry Committee

Nicole Landreth,
nicole@womanspace-rockford.org

¡Necesito Practicar Más! Conversational Spanish

Si entiendes poco o nada, pero quieres practicar tu español con amigas, then join us! Whatever your background in learning or understanding Spanish, if you're ready to bump up your fluency and practice in a friendly and supportive environment, then we'll see you soon! We meet twice a month and chat about life en español. Registration is required for this group.

2nd & 4th Saturdays | 10:00-11:30a

CG26L-21 | **Mar 21, 28** | Reg. by 3/12

CG26L-22 | **Apr 11, 25** | Reg. by 4/9

CG26L-23 | **May 16, 23** | Reg. by 5/14

CG26L-24 | **Jun 13, 27** | Reg. by 6/11

CG26L-25 | **Jul 11, 25** | Reg. by 7/9

CG26L-26 | **Aug 8, 22** | Reg. by 8/6

Sliding Scale \$5-\$20

Sylvia Candelaria Landreth

Reif Gallery (Mar 21 will be offsite)

Gallery Games: Learn How to Play MAHJONG

Ever wanted to learn Mahjong but felt intimidated by the tiles and rules? This beginner-friendly, three-week introduction to the American version breaks it all down step-by-step in a fun and approachable way. We'll start with the basics, move into rules and strategy, and wrap up with practice games so you can feel confident playing on your own. Temporary Mahjong National Hands & Rules cards will be provided during these sessions. If interest continues, we will offer a follow-up session later in the summer. Come learn, play, and connect – one tile at a time. Min. of 4 people.

Wednesdays | 5:00-7:00p | Reg. by 3/23

GG26-21 | **Mar 25-Apr 8** (3 wk)

\$40 (Member \$30) | Judy Hedegaard

Reif Gallery



Need Space for Your Group?

Ask about renting a space inside or out.

Contact Nicole at:

nicole@womanspace-rockford.org

A meaningful way to give— directly from your IRA

For those age 70½ and older, a Qualified Charitable Distribution (QCD) allows you to transfer funds directly from your IRA to support our mission. This gift can be made tax-free and may count toward your required minimum distribution (RMD), helping you care for your financial future while investing in our shared community. If you are interested, please request a check from your IRA made payable directly to WOMANSPACE, INC. Thank you!



community

RKFD Stationery Club

Love all things related to pens, paper, and creative journaling? Join the Rockford Stationery Club – a relaxed, welcoming space for stationery enthusiasts to gather, connect, and share their love for writing, crafting, and beautiful supplies. There's no set curriculum or structured activity – just time to hang out, swap ideas, and enjoy the simple joy of stationery in good company. Bring your favorite notebooks, stickers, washi tape, or projects you're working on, and join a community that appreciates the art of slowing down and creating together. PLEASE NOTE: this is not a class or workshop, it is a hangout.

Saturdays | 2:00-4:00p

Sliding Scale \$5-\$20 | Caitlin Yarbro | ND Upper Studio

Letter Writing & Journal Meet Up

SGS26-21 | **Mar 21** | Reg. by 3/19

Spring Refresh & Self Reflection

SGS26-22 | **Apr 11** | Reg. by 4/9

Snail Mail & Envelope Decorating

SGS26-23 | **May 16** | Reg. by 5/14

Letters, Journals & Planners

SGS26-24 | **Jun 6** | Reg. by 6/4

Summer Memories, Journal Making

SGS26-25 | **Jul 11** | Reg. by 7/9

Stationery Store Day Debrief

SGS26-26 | **Aug 8** | Reg. by 8/6

Support Group: Learning to Live with Loss

This monthly grief support group is for people learning how to live in a world that's been changed by loss. Grief can affect the body, the mind, relationships, and identity – often all at once. Each session offers gentle education about how grief works, along with time for reflection and optional conversation. There's no pressure to share, no timeline to follow, and no expectation to "move on." The goal is simple: to make sense of grief, reduce isolation, and offer support along the way. This group is supportive in nature and not a replacement for individual therapy.

3rd Thursdays | 6:00-7:30p

SGG26-21 | **Mar 19** | Reg. by 3/17

SGG26-22 | **Apr 16** | Reg. by 4/14

SGG26-23 | **May 21** | Reg. by 5/19

SGG26-24 | **Jun 18** | Reg. by 6/16

SGG26-25 | **Jul 16** | Reg. by 7/14

SGG26-26 | **Aug 20** | Reg. by 8/18

Sliding Scale \$5-\$20 | Rhiannon Yandell | Reif Gallery

Support Group: Autoimmune Diseases

This group's mission is to provide those with autoimmune diseases an opportunity to relate to one another, and talk about things that have helped them adapt to certain challenges. We also are welcoming to friends and family of those with autoimmune diseases.

3rd Wednesdays | 6:00-8:00p

SGA26-21 | **Mar 18** | SGA26-24 | **Jun 17**

SGA26-22 | **Apr 15** | SGA26-25 | **Jul 15**

SGA26-23 | **May 20** | SGA26-26 | **Aug 19**

Sliding Scale \$5-\$20 | Jillian Peppers | Reif Gallery

MUST register by two days before each day.

Creative Co-Work Café

Bring your laptop, sketchbook, knitting, or whatever project you've been procrastinating on. Work alongside others for a boost of accountability and a sprinkle of creativity.

Mondays | 11:00a-5:00p

CGC26-23 | **Mar 2-23** | CGC26-26 | **Jun 8 & 29**

CGC26-24 | **Apr 6-27** | CGC26-27 | **Jul 6-27**

CGC26-25 | **May 4-18** | CGC26-28 | **Aug 3-24**

\$5 Non-Members (FREE Members) | ND Upper Studio

Gratitude & Goal Circle

As the seasons shift, we gather to reflect, realign, and set intentions. In line with Womanspace's equinox and solstice traditions, this circle honors gratitude for what has been and clarity for what is emerging. We'll close with a labyrinth walk, stepping into the season, grounded and supported.

Saturdays | 12:00-2:00p

CGG26-21 | **Mar 14** | Reg. by 3/12 *Spring Equinox*

CGG26-22 | **Jun 13** | Reg. by 6/11 *Summer Solstice*

Sliding Scale \$5-\$20 | Nicole Landreth | ND Upper Studio

Finding the Collective: A Writing Series WR26-23

Sometimes we find ourselves in our own "silos," working by ourselves and focusing on how to improve ourselves and impact our communities. Could discovering a group of kindred people be more helpful in accomplishing both the personal and the community goals? The sky's the limit when we locate and interact with other people who also want to be the change! Learn from Christopher D. Sims who has already built collectives of amazing writers in Rockford, Madison and Wilmington, Delaware. During the process of collective building here, you may find the people with whom you are meant to build a better world!

Fridays | Aug 7-28 (4 wk) | 6:00-7:30p | Reg. by 8/5

\$105 (Member \$85) | Christopher D. Sims | Reif Gallery

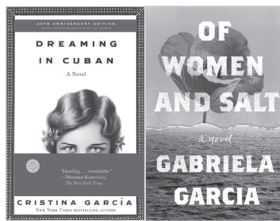
bad girl book club



Join this evening women's book club in the Loretta & William Reif Gallery. And no, you don't have to be a "bad girl" to join the group! This group focuses on books with female authors and unique female protagonists. In depth and honest opinions are encouraged. You don't even have to finish the book to join in. **Registration required.**

***Dreaming in Cuban* by Cristina García & *Of Women and Salt* by Gabriela García** BG26-21

Two powerful, multi-generational novels by Cuban-American authors, both exploring Cuban and Cuban-American women's lives, memory, trauma, identity, and resilience through political upheaval, revolution, and immigration, using interconnected stories, magical realism, and rich cultural detail to examine mother-daughter bonds and the search for home.



Monday | Mar 9 | 6:00-8:00p | Reg. by 3/7
Sliding Scale \$5-\$20 | Andrea Azar & Jenny Redington

***The Book Club for Troublesome Women* by Marie Bostwick** BG26-22

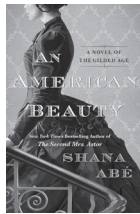
A historical fiction novel set in 1963 Virginia, following suburban housewives Margaret, Viv, Bitsy, and Charlotte as they form a secret book club to discuss *The Feminine Mystique*, sparking feminist awakenings, challenging societal expectations, and forming deep friendships.



Monday | Apr 13 | 6:00-8:00p | Reg. by 4/11
Sliding Scale \$5-\$20 | Andrea Azar & Jenny Redington

***An American Beauty* by Shana Abé** BG26-23

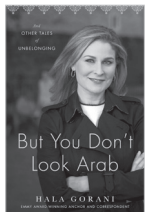
An historical novel based on the life of Arabella Huntington, a woman who rose from poverty in post-Civil War Virginia to become one of the wealthiest women in America during the Gilded Age.



Monday | May 11 | 6:00-8:00p | Reg. by 5/9
Sliding Scale \$5-\$20 | Andrea Azar & Jenny Redington

***But You Don't Look Arab* by Hala Gorani** BG26-24

A memoir exploring the author's complex identity as a Syrian-American with blonde hair and blue eyes, blending her personal journey with her career covering Middle Eastern conflicts, delving into themes of belonging, displacement, and the "otherness" felt by many in the Arab diaspora



Monday | Jun 8 | 6:00-8:00p | Reg. by 12/6
Sliding Scale \$5-\$20 | Andrea Azar & Jenny Redington

***Sense and Sensibility* by Jane Austen** BG26-25

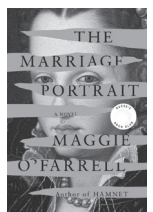
The novel is probably set between 1792 and 1797 and follows the three Dashwood sisters and their widowed mother as they are forced to leave the family estate in Sussex and move to a modest cottage on the property of a distant relative in Devon. There the two eldest girls experience love and heartbreak that tries the contrasting characters of both.



Monday | Jul 13 | 6:00-8:00p | Reg. by 7/11
Sliding Scale \$5-\$20 | Andrea Azar & Jenny Redington

***The Marriage Portrait* by Maggie O'Farrell** BG26-26

An historical novel based on the life of Lucrezia de' Medici, who was married off to the older Duke of Ferrara, Alfonso d'Este, in 16th-century Italy.



Monday | Aug 10 | 6:00-8:00p | Reg. by 8/8
Sliding Scale \$5-\$20 | Andrea Azar & Jenny Redington



LOOKING FOR THE CALENDARS?

A live up-to-date calendar is available to view on our web site:

womanspace-rockford.org/calendar

bookwoman

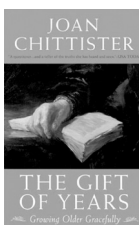


All women are invited to these discussions to share observations, enthusiasm, insights and the pure enjoyment of reading.

The Gift of Years

by Joan Chittister BW26-21

Chittister reframes aging as a blessing, not a burden, encouraging readers to find purpose, wisdom, and joy in later life. She challenges the cultural glorification of youth, exploring the unique opportunities, challenges, and spiritual depth that come with aging.



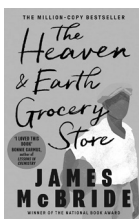
Wednesday | Mar 11 | 10:00-11:30a

Sliding Scale \$5-\$20 | Reg. by 3/9 | Reif Gallery

Heaven and Earth Grocery Store

by James McBride BW26-22

The story begins in 1972 with the discovery of a skeleton in a well, prompting a flashback to reveal the secrets and strong bonds between the residents, particularly focusing on Moshe and Chona Ludlow, who run the titular grocery store and a local theater, and their efforts to help those in their community despite racial and class divides.



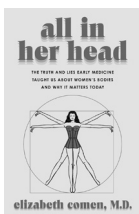
Wednesday | Apr 8 | 10:00-11:30a

Sliding Scale \$5-\$20 | Reg. by 4/6 | Reif Gallery

All in Her Head

by Dr. Elizabeth Comen BW26-23

The historical mistreatment and misunderstanding of women's health by the medical system continues to affect women today. As a breast oncologist, Comen uses her own experiences and extensive research to detail how women have been dismissed, pathologized, and ignored, using the eleven organ systems as a framework to reveal how patriarchal beliefs have shaped medical guidance. The book serves as both an historical account and a call to action for women to advocate for themselves in healthcare.



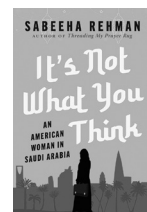
Wednesday | May 13 | 10:00-11:30a

Sliding Scale \$5-\$20 | Reg. by 5/11 | Reif Gallery

It's Not What You Think It Is: An American Woman in Saudi Arabia

by Sabeeha Rehman BW26-24

A wry, incisive account of working in Saudi Arabia that offers insight into that insular patriarchal society. The author describes why expatriates living there find it attractive, and what was contradictory about it for a naturalized American Muslim woman. Rehman's book takes the reader on a journey of discovery that mirrors her own.



Wednesday | Jun 10 | 10:00-11:30a

Sliding Scale \$5-\$20 | Reg. by 6/8 | Reif Gallery

Mrs. Dalloway by Virginia Woolf

A vivid portrait of a single day in a woman's life. When we meet her, Mrs. Clarissa Dalloway is preoccupied with the last-minute details of party preparation while in her mind she is something much more than a perfect society hostess. As she readies her house, she is flooded with remembrances of faraway times. Met with present realities, she reexamines the choices, looking toward the unfamiliar work of growing old.



Wednesday | July 8 | 10:00-11:30a

Sliding Scale \$5-\$20 | Reg. by 7/6 | Reif Gallery

The Forest of Vanishing Stars

by Kristin Harmel BW25-26

Raised in the unforgiving wilderness of eastern Europe, a young woman finds herself alone in 1941 after her kidnapper dies. She happens upon a group of Jews fleeing the Nazi terror. and is stunned to learn what's happening in the outside world. When she is betrayed and escapes into a German-occupied village, her past and present come together in a shocking collision that could change everything.



Wednesday | Aug 12 | 10:00-11:30a

Sliding Scale \$5-\$20 | Reg. by 8/10 | Reif Gallery

supper & film

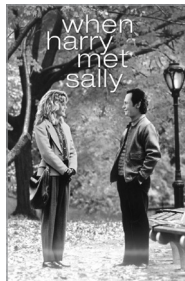
Registration required. NO WALK-INS.



All are welcome! We will watch these films in the Reif Gallery while sharing a delicious dinner prepared by volunteers and then have a discussion of the film, characters, and artistry.

When Harry Met Sally SF26-21

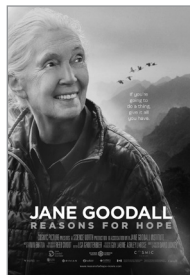
Harry and Sally meet when she gives him a ride to New York after they both graduate from the University of Chicago. The film jumps through their lives as they both search for love but fail, bumping into each other time and time again. Finally, a close friendship blooms between them, and they both like having a friend of the opposite sex. But then they are confronted with the problem: "Can a man and a woman be friends, without sex getting in the way?" 1989 | R | 95 min.



Monday | Mar 23 | 6:00-9:00p
\$20 (Members \$15) | Reg. by 3/21

Jane Goodall - Reason for Hope SF26-22

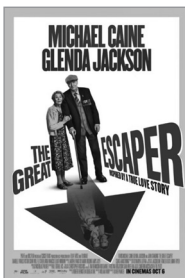
This documentary is a biography of Jane Goodall, primatologist and conservationist. It is particularly concerned with her spiritual development and her message of hope that, working together, humans can overcome our differences and make the world safe and habitable for ourselves and the creatures impacted by our choices. 1999 | NR | 60 min.



Monday | Apr 27 | 6:00-9:00p
\$20 (Members \$15) | Reg. by 4/25

The Great Escaper SF26-23

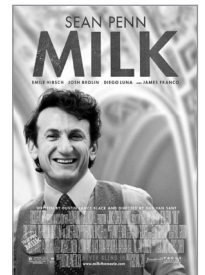
Based on the true story of an 89-year-old British World War II Royal Navy veteran. Bernard Jordan (Michael Caine) "broke out" of his nursing home to attend the 70th anniversary D-Day commemorations in Normandy, France in June 2014. Along the way, he is aided by strangers, makes some new friends and says a heartfelt goodbye to a fallen friend, while news of his "escape" makes him an international sensation. 2023 | PG-13 | 96 min.



Monday | May 25 | 6:00-9:00p
\$20 (Members \$15) | Reg. by 5/23

Milk SF26-24

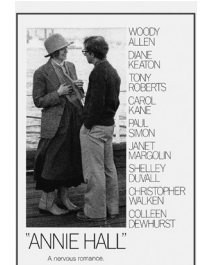
This film traces Harvey Milk's career from his 40th birthday to his death. He leaves the closet and New York, opens a camera shop that becomes the salon for San Francisco's growing gay community, and organizes gays' purchasing power to build political alliances. He runs for office with lover Scott Smith as his campaign manager. Victory finally comes on the same day Dan White wins in the city's conservative district. 2008 | R | 128 min.



Monday | Jun 22 | 6:00-9:00p
\$20 (Members \$15) | Reg. by 6/20

Annie Hall SF26-25

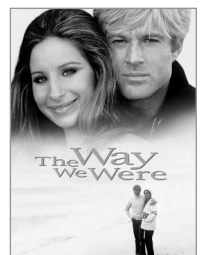
Alvy Singer reflects on the demise of his latest relationship to Annie Hall. Unlike past relationships, Alvy believed he may have worked out all the issues in his life through fifteen years of therapy to make this relationship with Annie last. Alvy not only reviews the many ups and downs of their relationship, but also reviews the many facets of his makeup that led to him starting to date Annie. 1977 | PG | 93 min.



Monday | Jul 27 | 6:00-9:00p
\$20 (Members \$15) | Reg. by 7/25

The Way We Were SF26-26

Set in the period from the mid-1930s to the 1950s, this is a love story involving two markedly different people. Katie is an idealistic, uptight, Stalin-loving political activist. Hubbell is an easy-going, athletic, all-American type, and a talented writer. We see how their different personalities affect their relationship and how they manage despite the differences. 1973 | PG | 118 min.



Monday | Aug 24 | 6:00-9:00p
\$20 (Members \$15) | Reg. by 8/22

mind & body

There is no reduction in fees if you are unable to attend all scheduled classes in a series.



Meditation: A Wellness Practice

Start your day off with greater focus, less stress and more peace of mind from the comfort of your own home this summer. Meditation is the practice and process of paying attention and focusing your awareness. Different forms of meditation are introduced like *Sitting-Breathing*, *Body-Scan* and *Loving-Kindness* meditations. They are practiced in a seated position with a soothing voice guiding you through the process! Join us via Zoom. Those who have taken this class for years say it's a great way to de-stress, re-charge and re-focus – all without having to worry about the commute!

Tuesdays | 8:30-9:30a

MD26-21 | **Mar 3-25** (4 wk) | Reg. by 3/1

MD26-22 | **Apr 7-28** (4 wk) | Reg. by 4/5

MD26-23 | **May 5-26** (4 wk) | Reg. by 5/3

MD26-24 | **Jun 2-23** (4 wk) | Reg. by 5/31

MD26-25 | **Jul 7-28** (4 wk) | Reg. by 7/5

MD26-26 | **Aug 4-25** (4 wk) | Reg. by 8/2

\$50 (Member \$40) | Shiraz Tata, Ph.D. | Zoom

Book Signing:

A Door Closes – A Door Opens WR26-21

Join us in the Reif Gallery for a special gathering with longtime Womanspace member Marge Orchard as she shares her newly released book, *A Door Closes – A Door Opens*, the third and concluding installment of her memoir.

In this deeply personal volume, Marge reflects on her intense journey of self-discovery, thoughtfully revisiting the experiences that shaped her life and the lives of her siblings and mother. Through faith, reflection, and the transformative power of writing, she explores the emotional and psychological healing that led her toward understanding and peace.

Following her talk, there will be a book signing and an opportunity to connect with Marge personally. Don't miss this meaningful celebration of resilience, reflection, and literary achievement.

Wednesday | Mar 18 | 11:00a-12:00p | Reg. by 3/16

Sliding Scale \$5-\$20 | Marge Orchard | Reif Gallery

Self-Love Revolution:

Build a Stronger, Happier You MB26C-21

Discover the power within you!! Unlock the wisdom of embracing your worth, accepting yourself fully, advocating for your needs, and practicing self-care. Each week, embark on an enriching exploration of a component of self-love. Through interactive sessions and engaging homework assignments, you'll cultivate the mindset and habits to nurture your relationship with yourself. Reserve your spot today and let's start this journey together!

Thursdays | Apr 30-May 21 (4 wk) | **6:00-7:30p**

\$100 (Member \$80) | Reg. by 4/28

Denise Colin | Reif Gallery

Wild Food/Wild Medicine:

Take a Walk on the Wild Side HL26C-21

Learn to identify and work with wild plants for food and medicine. During this fun and engaging plant walk, we will identify plants that are edible and medicinal. We will discuss how they can be harvested and prepared for optimal nourishment and healing. Both those new to foraging and those who are experienced will gain insights and inspiration from this walk. During the walk we will harvest a seasonal wild salad that we will sample and everyone will make their own wild plant infused vinegar to take home.

Saturday | Aug 29 | 11:00-1:00p | Reg. by 8/27

\$90 (Member \$75) | Linda Conroy | Grounds & Reif Gallery

CHAKRA COACHING

Explore physical health & wellness, emotions & creativity, inner strength & self confidence, self-care, communication & self-knowledge, intuition & insight, spiritual issues & meaning

Kathy Moehling, RN, MS, Holistic & Chakra Coach

815-633-5553 (landline) 815-494-9524 (texts)

www.energyconnectionholistichealth.com

Individual & Group
Coaching



Riverside Blvd
office

mind & body



Reiki I RK26-21

Reiki (ray-key) is a Japanese word meaning "Universal Life Force Energy" that describes the energy found in all of life. An ancient form of hands-on energy healing, Reiki is a skill obtained through an attunement (opening) to bring the power of Universal Life Force Energy through the human chakra system. The energy is then used to balance the body or an object by bringing it once again into harmony with the universe. Learn the hand positions for self-healing and for the healing treatments of others. We will talk about the seven major chakras and the history of the Usui System of Natural Healing. You will receive your first attunement. We will also have time to practice feeling energy and giving Reiki to each other. **Please wear comfortable, loose fitting clothing, with no jewelry or perfumes. Bring a sack lunch.**

Saturday | Jul 11 | 9:00a-4:00p | Reg. by 7/9
\$145 (Member \$120) | Debby Gaines Rose | Yoga Studio

Reiki II RK26-22

[Must have completed Reiki I. You can sign up for Reiki I and II in the same weekend!] Learn symbols and mantras to focus and deepen the healing treatment of the Reiki energy. We will talk about the sacredness of the Reiki symbols. Participants will receive their Second Attunement, further opening and strengthening their connection to Reiki energy while honoring the integrity and lineage of this practice. Begin to learn ways to send Reiki through time and distance, allowing healing in the past to improve the present. We will have time to practice feeling energy by giving Reiki to each other. **Please wear comfortable, loose fitting clothing, with no jewelry or perfumes. Bring a sack lunch.**

Sunday | Jul 12 | 9:00a-4:00p | Reg. by 7/9
\$145 (Member \$120) | Debby Gaines Rose | Yoga Studio


La Onda^{NFP}
presents

An Evening with
Frida Kahlo

Friday, July 31, 6:00-9:00p
in the Anjali Pavilion at Womanspace

Join us for a celebration of La Onda's month-long Frida Fest! Mingle and chat at this festive evening of drinks, music, and heavy hors d'oeuvres!
A speaker will also enlighten us with a fresh perspective of Frida Kahlo!

This event is a fundraiser
for La Onda NFP.
www.somslaonda.org

Sponsored by

womanspace

BE YOURSELF
SAVE THE WORLD

Eliminate textile waste through alterations and repairs at Tad More. Your footprint matters...
So do you.

TAD MORE
TAILORING AND ALTERATIONS
www.tmtailor.com
779-423-1234

mind & body

Sound Bowl Bath

Sink into a deeply soothing 60-minute sound bath designed to help you unwind, release stress, and reconnect with your inner calm. Each session features crystal singing bowls and other gentle, resonant instruments that create a restorative soundscape for relaxation and energetic balance. Participants are invited to lie or sit down comfortably as waves of sound wash over the body, quieting the mind, easing tension, and supporting mindfulness. Whether you're seeking stress relief, emotional grounding, or simply a peaceful pause in your week, this sound bath offers a nurturing space to reset and recharge. **Bring a comfortable mat, blanket, pillow. Chairs are available.**

Saturdays | 10:00-11:00a

SB26-21 | **Mar 21** | Reg. by 3/19 *Spring Equinox*
SB26-22 | **May 2** | Reg. by 4/30
SB26-23 | **Jun 20** | Reg. by 6/18 *Summer SOULstice*
SB26-24 | **Jul 25** | Reg. by 7/23
SB26-25 | **Aug 1** | Reg. by 7/30
\$25 (Member \$20) | Kristin Krieger | Yoga Studio

Creating Flower Art with The Native Flower Girl

Create, connect, and explore the beauty of botanical art in this hands-on workshop with The Native Flower Girl. Participants will experiment with fresh floral elements to craft their own unique composition, focusing on the creative process and the natural textures, colors, and movement of flowers. Each person will leave with an 8x10 print capturing their finished piece – a lasting reminder of their time creating with nature.

MB26L-21 | **Saturday | Apr 11 | 2:00-4:00p** | Reg. by 4/9
MB26L-22 | **Friday | May 6 | 6:00-8:00p** | Reg. by 5/3
\$80 (Member \$65) | Lindsey Butz | ND Upper Studio

Gongtopia

It's unlike anything you have ever experienced before. Imagine floating in an ocean of sound, where you can let go of all your stress and worries. Gongs, Singing Bowls, Bells, and other instruments ring out, creating waves of vibrations that wash over you. Your body and energy systems are able to realign and recharge, helping to clear out blockages, while leaving you refreshed and reawakened. **Bring a chair or yoga mat/blanket and wear comfy clothing.**

Fridays | 6:30-8:00p

MB26B-21 | **May 15** | Reg. by 5/13
MB26B-22 | **Jul 17** | Reg. by 7/15
\$40 (Member \$35) Walk-in Fee: \$45
Michael Bettine | Anjali Pavilion

Summer Solstice Celebration & Gathering

Join us in honoring the Summer Solstice – the longest day of the year and a powerful turning point in the seasonal cycle. This gathering will be a gentle, heart-centered celebration of light, growth, and presence. Through intentional light movement, breath, and moments of stillness, we'll create space to reflect on what is blooming within us and what we wish to nurture as the season unfolds. This offering is not about performance or perfection, but about connection – to our bodies, our hearts, one another, and the natural rhythms that support us. Expect a grounding yoga practice, opportunities for reflection through journaling, and a shared sense of community as we pause to acknowledge the fullness of this moment. **Bring a water bottle, a yoga mat if you have one, and a journal & writing tool.**

RF26-22 | Saturday | Jun 20 | 6:00-8:00p

\$15 (Member \$10) | Reg. by 6/18
Emma Hernandez & Deborah Gaines Rose | Anjali Pavilion

SINCE 1914
Fitzgerald
FUNERAL HOME
& CREMATORY LTD.

Mulford Chapel

1860 S. Mulford Road, Rockford IL 61108
815-226-2273

Riverside Chapel

3910 N. Rockton Avenue, Rockford, IL 61108
815-654-2484

www.fitzgeraldfh.com



Melinda Hagerman
Funeral Director



Zaih Engebretson
Funeral Director



Diana Clausen
Funeral Director



Jordan Windisch
Funeral Director



Lindsey Smirz
Funeral Director



Damaris Trujillo
Family Services Consultant

movement



Dress comfortably, bring a yoga mat, water bottle and desired props if you have them.

Hatha Yoga

All levels. This class uses breath to movement, taking you through a series of warm-up poses, sun salutations, strengthening asanas, balance postures, and twists, ending with deep stretches and relaxation.

Thursdays | 10:00-11:00a

YG26-21 | **Mar 5-Apr 2** (4 wk; no 3/12)

YG26-22 | **Apr 9-30** (4 wk)

YG26-23 | **May 7-28** (4 wk)

YG26-24 | **Jun 4-25** (4 wk)

YG26-25 | **Jul 9-30** (4 wk)

YG26-26 | **Aug 6-27** (4 wk)

Reg. 2 days before each session

\$50 (Members \$40) | Single class: \$15

Amanda Stivers | Yoga Studio

Rhiannon Yandell (to sub. on 3/5, 6/11)

Forest Therapy MB26H-22

Forest therapy offers an opportunity to come back to your body and remember who you are within and as nature. This guided walk will provide you with invitations to engage in the forest, and to offer a chance to slow down. Don't expect an intense hike or a talk therapy session; this is an easy (less than 3/4 mile) walk, and in forest therapy, the forest is therapist – the guide simply opens the doors.

Saturday | Aug 22 | 10:00a-12:00p | Reg. by 8/20

\$35 (Member \$30) | Callie Hunter | ND Upper Studio



The Gardens Need YOU!

Like to spend time outside playing in the dirt? PLEASE consider being part of our "Adopt-a-Space" opportunity. **We could use your help.** We have many small spaces that need occasional maintenance including weeding, trimming, caring, etc.

Volunteers can be individuals, pairs, families, or groups that work on their adopted space any time and on their own schedule, perhaps weekly or just as needed once you get to know your space.

Contact Anne at agodin7733@aol.com

Unwind at 5:30

All levels. Enjoy a gentle, soulful pause at the end of your day. Guided by breath and intuitive movement, we'll move through a nourishing blend of Vinyasa and Yin to release tension, soften the body, and restore balance. Weather permitting, we'll practice outdoors. Incense is sometimes used.

Tuesdays | 5:30-6:30p

YU26-21 | **Mar 10-31** (4 wk)

YU26-22 | **Apr 7-28** (4 wk)

YU26-23 | **May 5-28** (4 wk)

YU26-24 | **Jun 9-30** (4 wk)

YU26-25 | **Jul 7-28** (4 wk)

YU26-26 | **Aug 4-25** (4 wk)

Reg. 2 days before each session

\$50 (Members \$40) | Single class: \$15

Kyra Nakamatsu | Yoga Studio

Adaptive Yoga

All Levels. This class is being offered online Zoom only! The Zoom link will be sent in your registration confirmation email. Adaptive Yoga is a particularly effective practice and can have therapeutic benefits for those recovering from or living with injury, illness, or disease. This specialty yoga course blends chair yoga, restorative yoga (supported postures), gentle yoga, Pranayama (breath work), individualized attention, and guided meditation techniques combined in such a way that it is an excellent choice for those who need something gentle, yet effective.

Wednesdays | 10:00-11:00a

YT26-21 | **Mar 4-Apr 1** (4 wk)

YT26-22 | **Apr 8-29** (4 wk)

YT26-23 | **May 6-27** (4 wk)

YT26-24 | **Jun 3-24** (4 wk)

YT26-25 | **July 8-29** (4 wk)

YT26-26 | **Aug 5-26** (4 wk)

Register by 2 days before each session
\$80 (Members \$60)

Amanda Stivers | Zoom Only

Friday RECORDINGS | 10:00a

YT26F-21 | **Mar 6-Apr 3** (4 wk)

YT26F-22 | **Apr 10-May 1** (4 wk)

YT26F-23 | **May 8-29** (4 wk)

YT26F-24 | **Jun 5-26** (4 wk)

YT26F-25 | **Jul 10-31** (4 wk)

YT26F-26 | **Aug 7-28** (4 wk)

Reg. by 2 days before for each session
\$25 (Members \$20)

saturday mini-retreats



Join us for any one or any combination of these programs for a mini-retreat experience. In April our focus will be “Sustainability of Self & Earth”, and in June our focus will be “Reflection, Release, and Restoration.”

rooted renewal

Soundbowl Bath: Rooted in Renewal RT26-21

Reset and recharge! Sink into a deeply soothing 60-minute sound bath designed to help you unwind, release stress, and reconnect with your inner calm. Crystal singing bowls and other gentle, resonant instruments create a restorative soundscape for relaxation and energetic balance. Lie or sit down comfortably as waves of sound wash over the body, quieting the mind, easing tension, and supporting mindfulness. **Bring a comfortable mat, blanket, pillow. Chairs are available.**

Saturday | Apr 25 | 10:00-11:00a | Reg. by 4/23
\$25 (Member \$20) | Kristin Krieger | Yoga Studio

Sipping Stillness: Teas for a Calmer Self RT26-22

Join us in this workshop where participants will explore how specific herbal teas can soothe anxiety and restore balance. Through hands-on blending, guided tasting, and short reflection exercises, you'll discover simple botanicals that calm the mind while supporting sustainable practices that honor both self and earth. Learn how to craft your own anxiety-easing tea blend, practice mindful sipping, and leave with tools for cultivating serenity and ecological awareness in daily life.

Saturday | Apr 25 | 1:00-3:00p | Reg. by 4/23
\$30 (Member \$25) | Miranda Grisales-Buell | ND Upper Studio

Forest Therapy RT26-23

Are you feeling overwhelmed and stressed? Are you looking for a place to find peace and calm? Perhaps you have a trauma you are trying to resolve, or maybe you're looking for a place to feel at home? Whatever the reason, all are welcome here. Forest therapy offers an opportunity to come back to your body and remember who you are within and as nature. This guided walk will provide you with invitations to engage in the forest, and to offer a chance to slow down. Don't expect an intense hike or a talk therapy session; this is an easy (less than 3/4 mile) walk, and in forest therapy, the forest is therapist – the guide simply opens the doors.

Saturday | Apr 25 | 3:00-5:00p | Reg. by 4/23
\$35 (Member \$30) | Callie Hunter | ND Upper Studio

healing & integration

Writing for Healing RT26-24

Healing is much needed today. In communities and cities across the country, dedicated and committed people are working without enough healing for themselves. Christopher D. Sims will share literature written about and for healing, and share his own healing writing processes and examples. If you have any reflective pieces to discuss please bring them. This class offers a setting for healing and engaging participants in personal reflection writing.

Saturday | Jun 27 | 10:00a-12:00p | Reg. by 6/25
\$50 (Member \$40) | Christopher D. Sims | ND Upper Studio

Mandalas and Mantras:

A Reflective Workshop RT26-25

Discover the meditative power of art and words in this uplifting workshop where creativity meets mindfulness. We'll begin with a grounding meditation, focus our intentions into a personal mantra, and carry that energy into our mandala art. This experience invites calm, reflection, and connection to your inner strength. No art experience needed – just come as you are. **You may bring a symbol or image to include in your design.** All supplies provided, including canvas, and tools.

Saturday | Jun 27 | 12:00-2:00p | Reg. by 6/25
\$45 (Member \$35) | Nicole Landreth | ND Upper Studio

Creating Flower Art with The Native Flower Girl RT26-26

Create, connect, and explore the beauty of botanical art in this hands-on workshop with The Native Flower Girl. Participants will experiment with fresh floral elements to craft their own unique composition, focusing on the creative process and the natural textures, colors, and movement of flowers. Each person will leave with an 8x10 print capturing their finished piece – a lasting reminder of their time creating with nature.

Saturday | Jun 27 | 2:00-4:00p | Reg. by 6/25
\$80 (Member \$65) | Lindsey Butz | ND Upper Studio

art studios & galleries



New Dimensions Studio

The heart and home of Womanspace arts education! The studios provide a bright, beautiful space for women and men of all ages and abilities to explore their creativity.

The **Upper Studio** offers plenty of space for our many art programs. Throughout the year, we offer classes in a variety of media including acrylic, watercolor, drawing, sculpture, mixed media, fine crafts and more!

The **Clay Studio** is in the lower level of New Dimensions Studio. It is a fully-functioning, brightly lit pottery studio offering a number of clay classes. Find one that intrigues you on the following pages and plan to “come clay with us!” A stair lift is available.

Gallery2Go

This is a unique gift shop with ever-changing displays of one-of-a-kind art and gifts that you will love, most created by our members! Gallery2Go features art, jewelry, books, cards, textiles and more. Open to the public Monday–Thursday, 10:00a–5:00p, and sometimes on weekends and evenings when programs are scheduled.



Upcoming Art Shows in the Loretta & William Reif Gallery

Our premier art gallery and meeting space in our main building is named in honor of Loretta & Bill Reif, major Womanspace friends and benefactors.

WOMEN OF POWER: QUEEN. GODDESS. HEROINE. – March 6–April 26
Spring ArtScene Reception Fri, Apr. 24, 5:00–9:00p; Sat., Apr. 25, 4:00–9:00p.

Notable women from history, mythology, archetypes, and our own mentors, teachers, and inspirations have paved the way to empower and inspire us. This exhibit celebrates these women of power.

YOU ARE WHAT YOU ART: ROCKFORD ART GUILD SHOW - May 1–June 21
Opening Reception May 1, 5:30–7:00p.

A collection of works from the Art Guild of Rockford, spanning many mediums, art forms and talents. Because at the end of the day, you are what you art!

KELLY JAMES: “FIND YOUR LIGHT”– June 26–August 16
Opening Reception June 26, 5:30–7:00p

Kelly finds her own inner light and color as it is reflected in every aspect of her surroundings in landscapes, on glassware, or even on the humble garden vegetable.

“ON THE ROAD AGAIN” – August 21–October 11
Opening Reception August 21, 5:30–7:00p

Once again, Una Ryan and her friends Cindy Hughes, Cynthia Linnabary, Barbara McNamara, Sue Mount, and Nancy McManus Olson share their continuing journey of camaraderie and creativity.

Open Clay Studio

Womanspace offers FEE-BASED open studio times for its students to continue work on their projects. These open studio times are SEPARATE from class time.



Open Studio Policy

- **You MUST be at least an intermediate pottery student OR have completed at least two beginning clay courses here at Womanspace.**
- **Open studio cannot be used to make up any missed pottery classes.**
- You MUST be a current and/or past Womanspace pottery student.
- Because of limited space, you MUST register via **SignUpGenius.com** for specific days and times.
- Please sign-up for the whole time you will be there and leave by your scheduled time.
- Only 6 people (+ studio monitor) are allowed in the clay studio.
- No knives are to be used on the canvas tables.
- You must clean up ALL the areas and equipment you use.

Open Studio Fees

There are three ways to pay for open studio time:



venmo

- Online
- Cash (write your name & amount on envelope provided).
- Venmo

For all payments, indicate on the sign-in sheet in the studio the amount paid and what the payment was for.

STUDIO FEE: \$5.00/HR.

CLAY FEE: \$2.00/LB (wet weight; includes glazes & firing)

art scholarships & awards

Womanspace is happy to manage three separate art scholarships for students *plus* an honorary award for an established adult artist. Listed below, you will find information about the purpose of each award, deadline dates, and both age and geographic eligibility. **Specific details and application forms can be found on our website: womanspace-rockford.org.** Anyone interested in supporting creative learning is encouraged to contribute to our high school scholarship fund.

Two distinct awards:

the deborah newton awards

The two Deborah Newton Awards honor the life and artistry of Rockford's own Deborah Newton.

**DEADLINE TO APPLY:
MARCH 17, 5:00 pm**

womanspace-rockford.org/DLN_Awards

*ROCKFORD AREA: Winnebago to the west, Rockton/South Beloit to the north, Belvidere to the east, and New Milford to the south.

1 art experience scholarship for 7th/8th graders

A scholarship to inspire and encourage new young artists.

ELIGIBILITY

Open to any 7th or 8th grade student currently enrolled in public, private or home-school curriculums within the Rockford area*.

PURPOSE

Award recipient will choose an art-making experience with a recognized local artist in consultation with Womanspace.

See details at womanspace-rockford.org

2 recognition award for an established adult artist

An award to recognize an active and established adult artist.

ELIGIBILITY

Open to any active visual artist within the Rockford area* who has been engaged in studio art-making for 12 mo. or more (past or present). Artists may apply themselves or be nominated by anyone.

PURPOSE

This award offers recognition to an adult artist who is actively engaged in the visual arts. Award includes purchase and exhibition opportunities. See details at womanspace-rockford.org



ELIGIBILITY

Open to high school seniors (all genders) at public or private schools in Winnebago, Boone or Ogle Counties. Must have minimum GPA of 3.0 out of 4.0 and a focus on fine arts.

PURPOSE This \$1000 scholarship is awarded to a high school senior who plans to pursue a degree in fine arts (e.g. drawing, painting, sculpture, art education, music, dance, theater or architecture) at a recognized institution of higher learning. See details at womanspace-rockford.org

DEADLINE TO APPLY: APRIL 15

ESTHER SCHENCK Scholarship for the Arts

ELIGIBILITY

Open to adult residents of Winnebago, Boone, Ogle or Stephenson Counties. Applicant must demonstrate a desire to develop creatively on a personal or professional level.

PURPOSE Established through an endowment from Esther Schenck, this scholarship supports individuals who seek to achieve a definable creative skill. This scholarship is available three times annually to help with costs for a class/program, materials and supplies.

See details at womanspace-rockford.org

**DEADLINES TO APPLY:
JANUARY 31, MAY 31, SEPTEMBER 30.**

clayworks

There is no reduction in fees if you are unable to attend all scheduled classes in a series. Open Studio cannot be used as a make-up for a missed class.



Wear clothes you don't mind getting dirty. Leave your rings and jewelry at home. Supply list: apron, hand towel and your own pottery tools. Fees includes up to 25 lbs. of clay, glazes & firing. Class sizes limited.

Introduction to Wheel Throwing

Age 16+ Beginner. This structured, beginner-level 8-week course meeting for 3 hours each week is designed for students with little to no experience working with clay. Participants will learn essential wheel throwing skills including wedging, centering, and throwing cylinders and bowls. Glazing will be demonstrated after pieces are low-fired, with finished work high-fired to complete the process. **Ideal for first-time potters and students new to Womanspace.** (See above for supply list.)

Tuesday PM | 6:00-9:00p

WT26N-21 | **Apr 7-May 26** (8 wk) | Reg. by 4/5
WT26N-22 | **Jun 2-Jul 21** (8 wk) | Reg. by 5/31
WT26N-23 | **Jul 28-Sep 15** (8 wk) | Reg. by 7/26
\$360 (Members \$300) | Alyssa Noonon | ND Clay Studio

Intermediate Wheel Thrown Pottery

Age 16+ Intermediate. Designed for students with prior wheel experience who are ready to continue developing their skills. This mostly structured class focuses on refining foundational techniques while exploring larger and more complex forms. Students will strengthen consistency, trimming, and finishing skills while completing the full process from wet clay to glazed, fired pieces. **Best suited for returning students who are comfortable with the fundamentals rather than those new to wheel throwing.** (See above for supplies.)

Fridays AM | 9:30a-12:30p

IN26F-21 | ***Apr 10-May 15** (6 wk) | Reg. by 4/8
IN26F-22 | **Jun 5-26** (4 wk) | Reg. by 6/3
IN26F-23 | **Jul 3-24** (4 wk) | Reg. by 7/1
IN26F-24 | **Jul 31-Aug 21** (4 wk) | Reg. by 7/29
IN26F-25 | **Aug 28-Sep 18** (4 wk) | Reg. by 8/26
\$180 (Members \$150) | Jennie Johnson Sic | ND Clay Studio
*Apr 10-May 15 is a two-hour 6 week course (9:30-11:30a).

Beginning Wheel Thrown Pottery

Ages 16+. Beginner. This structured, beginner-level 8-week course meeting for three hours each week is designed for students with little experience working with clay. Participants will work on essential wheel throwing skills including wedging, centering, and throwing cylinders and bowls. Glazing will be demonstrated after pieces are low-fired, with finished work high-fired to complete the process. **Ideal for beginner potters and students wanting to improve their skills.** (See above for supply list.)

Thursday AM | 9:30a-12:30p

WT26A-21 | **Apr 9-May 28** (8 wk) | Reg. by 4/7
WT26A-22 | **Jun 4-Jul 23** (8 wk) | Reg. by 6/2
WT26A-23 | **Jul 30-Sep 17** (8 wk) | Reg. by 7/28
\$360 (Members \$300) | Margo Olson | ND Clay Studio

WOMANSPACE GALLERY SPONSOR



Take the guesswork out of your retirement plan

Discover how our proprietary *Confident Retirement*[®] approach can help answer questions you may have about your retirement, like: *When will I be able to retire? How do I make the most of the money I have? How can I leave a lasting legacy to my loved ones?*

Call me today and learn how you can get on track to retire with confidence.

Call me today at (815) 708.6112



David Boccignone, CFP[®], ChFC[®], MBA
Financial Advisor
An Ameriprise Platinum Financial Services[®] practice

6870 Rote Rd
Ste 102
Rockford, IL 61107

815-708-6112

david.m.boccignone@ampf.com

www.ameripriseadvisors.com/
david.m.boccignone

Ameriprise Financial Services, Inc. Member FINRA and SIPC.
Confident Retirement is not a guarantee of future financial results.
© 2012 Ameriprise Financial, Inc. All rights reserved.



Give Us Your Feedback!

Scan the code and fill out the form online OR just give us a call!

clayworks

There is no reduction in fees if you are unable to attend all scheduled classes in a series. Open Studio cannot be used as a make-up for a missed class.

Wear clothes you don't mind getting dirty and leave your rings, watches and bracelets at home. Supply list: apron, hand towel and your own pottery tools. Unless otherwise stated, fees includes up to 25 lbs. of clay, glazes & firing. Class sizes limited.

Adv. Int. Wheel Thrown Pottery

Ages 16+. [Prerequisite: beginner throwing skills consistently mastered or instructor approval]. This 4-week course will allow you to take your skills further and learn to throw with larger amounts of clay and create more intricate forms such as bottles, plates, and lidded vessels. Students are welcome to suggest forms they're interested in creating and demonstrations will be given based on interest. Students are also free to work on their own personal projects and receive assistance from the instructor as needed. (See above for supplies.)

Mondays PM | 6:00-9:00p

IN26N-21 | **Mar 30-Apr 20** (4 wk) | Reg. by 3/28
IN26N-22 | **Apr 27-May 18** (4 wk) | Reg. by 4/25
IN26N-23 | **Jun 1-22** (4 wk) | Reg. by 5/30
IN26N-24 | **Jun 29-Jul 20** (4 wk) | Reg. by 6/27
IN26N-25 | **Jul 27-Aug 17** (4 wk) | Reg. by 7/25
IN26N-26 | **Aug 24-Sep 14** (4 wk) | Reg. by 8/22
\$180 (Members \$150) | Anya Nelson | ND Clay Studio

Saturdays AM | 9:00a-12:00p

IN26S-21 | **Apr 11-May 2** (4 wk) | Reg. by 4/9
IN26S-22 | **Jun 6-27** (4 wk) | Reg. by 6/4
IN26S-23 | **Jul 11-Aug 1** (4 wk) | Reg. by 7/9
IN26S-24 | **Aug 8-29** (4 wk) | Reg. by 8/6
\$180 (Members \$150)
Jennie Johnson Sic | ND Clay Studio



Please help us reduce paper towel consumption. Bring a rag or old towel to use.

WHAT BUGS YOU?
The Bug Lady Pest Control
815-289-7947
Chris Mei
Owner & Pest Control Specialist
7421 N. Alpine Rd., Loves Park, IL 61111
40+ Years Experience • Kid & Pet Friendly
Service Provider for Womanspace

Basic Handbuilding

Ages 16+. Beg. Join in this fun pottery class to learn the basics of hand building! Working with textures, stamps, decals, different glaze techniques, and more, Nancy will guide you through the process of creating one of a kind pottery pieces. (Supplies above)

Tuesdays AM | 10:00a-12:00p

HB26A-21 | **Apr 14-May 19** (6 wk) | Reg. by 4/12
HB26A-22 | **Jun 2-Jul 7** (6 wk) | Reg. by 5/31
HB26A-23 | **Jul 21-Aug 25** (6 wk) | Reg. by 7/19

Wednesdays PM | 2:30-4:30p

HB26N-21 | **Apr 15-May 20** (6 wk) | Reg. by 4/13
HB26N-22 | **Jun 3-Jul 8** (6 wk) | Reg. by 6/1
HB26N-23 | **Jul 22-Aug 26** (6 wk) | Reg. by 7/20
\$180 (Members \$150) | Nancy O'Neill | ND Clay Studio

Intermediate Handbuilding Pottery

Ages 16+. Intermediate-Advanced. Advance your hand-building skills while having fun in this 6-week class. Explore many hand-building techniques to make mugs, plates, functional pieces and pieces students are interested in creating. Create your own texture and templates and explore many decorating and glazing options. (See above for supplies.)

Thursdays PM | 6:00-8:00p

HB26P-21 | **Apr 16-May 21** (6 wk) | Reg. by 4/14
HB26P-22 | **Jun 4-Jul 9** (6 wk) | Reg. by 6/2
HB26P-23 | **Jul 23-Aug 27** (6 wk) | Reg. by 7/21
\$180 (Members \$150) | Lynette Porter | ND Clay Studio

Whimsical Pottery – Independent Study

Age 18+. Int.-Adv. Join this fun, independent clay study group and create something you are interested in. Use forms, natural elements, and your imagination to build practical, unusual or whimsical forms. Your clay partners will be able to offer some guidance, but no specific instruction will be provided. You must be an intermediate to advanced clay worker and be able to work independently. There are lots of tools to play with, lots of colors to choose from and so many choices for you to enjoy. (See above for supplies.)

Wednesdays AM | 9:30a-12:30p

HB26B-21 | **Apr 8-29** (4 wk) | Reg. by 4/2
HB26B-22 | **May 6-27** (4 wk) | Reg. by 5/4
HB26B-23 | **Jun 3-24** (4 wk) | Reg. by 6/1
HB26B-24 | **Jul 1-22** (4 wk) | Reg. by 6/29
HB26B-25 | **Aug 5-26** (4 wk) | Reg. by 8/3
\$180 (Members \$150) | Independent Study | ND Clay Studio

painting

There is no reduction in fees if you are unable to attend all scheduled classes in a series.



Toes in the Water: Sampler Series

Ages 18+. Beginner-friendly. This watercolor sampler invites you to explore new techniques, approaches, and styles. Each class brings a fresh opportunity for shared exploration. From brushwork to color play, every session offers a unique experience – perfect for first-timers or anyone looking to expand their skills while enjoying the creative flow of watercolor in a supportive community.

Tuesdays | 10:00a-12:00p | ND Upper Studio
WC26-21 | **Mar 3-24** (3 wk; no 3/17) | Reg. by 3/1
WC26-22 | **Mar 31-Apr 21** (4 wk) | Reg. by 3/29
WC26-23 | **Apr 28-May 12** (3 wk) | Reg. by 4/26
WC26-24 | **June 2-30** (3 wk; no 16, 23) | Reg. by 5/31
WC26-25 | **Jul 7-28** (4 wk) | Reg. by 7/5
WC26-26 | **Aug 4-25** (4 wk) | Reg. by 8/2
3-week fee: \$95 (Members \$80)
4-week fee: \$125 (Members \$105)
Cindy Bear (Mar), Laura Gomel (Apr), Various Instructors

Splashdown! Independent Study

Ages 18+. Intermediate-Advanced. This independent study offers watercolor artists the space to create, explore, and refine their skills within a supportive community. Participants work independently, bring their own supplies, and may occasionally invite special guests or share techniques with one another.

Thursdays | 10:00a-12:00p
WC26i-21 | **Mar 5-26** (4 wk) | Reg. by 3/3
WC26i-22 | **Apr 2-30** (5 wk) | Reg. by 3/31
WC26i-23 | **May 7-June 11** (4 wk; no 5/21, 28) | Reg. by 5/5
WC26i-24 | **Jul 7-28** (4 wk) | Reg. by 7/5
WC26i-25 | **Aug 6-27** (4 wk) | Reg. by 8/4
4-week fee: \$100 (Members \$80)
5-week fee: \$120 (Members \$100)
Independent Study | ND Upper Studio



Please help us reduce paper towel consumption. Bring a rag or old towel to use.

Painting Studio with Jaymee

Ages 16+. All levels. In this guided open studio, watercolor and acrylic artists receive highly individualized instruction tailored to their unique goals. Jaymee will provide individual instruction based on your creative goals. Some previous painting experience is beneficial, but not always necessary. Absolute beginners should be prepared to work on painting exercises before moving on to individual work. You'll have space for independent exploration, plus one-on-one support to help you develop your vision. **Bring your own references or draw inspiration from Jaymee's collection of samples. Cost includes a \$20 supply fee for paper, brushes, canvases and paints.**

Fridays | 11:00a-1:00p
PG26J-21 | **Apr 3-May 1** (5 wk)
PG26J-22 | **Jun 5-Jul 24** (5 wk; no 6/19, 6/26, 7/5)
PG26J-23 | **Jul 31-Aug 28** (5 wk)
\$170 (Members \$145) | Reg. by 2 days before each session
Jaymee Fedor | ND Upper Studio

Paint & Sip: Tote Bag Night

Ages 21+. Join us for a fun, feel-good Friday night Paint & Sip! This class is all about re-energizing through creativity, laughter, and connection. We'll paint canvas tote bags with acrylics while listening to music, enjoying the process, and each others company – no pressure, just play. **Bring a friend, bring your favorite beverage (BYOB). All supplies are provided.**

PG26Z-21 | **Friday | Apr 17 | 6:30-8:30p** | Reg. by 4/15
\$40 (Members \$30) | Nicole Zurita | ND Upper Studio

The Painting Studio: Art Movements Series

Join us in exploring your personal painting style through the lens of art history! Over four weeks, we'll dive into four iconic art movements – Impressionism, Fauvism, Surrealism, and Pop Art – exploring the multicultural history behind each while learning the techniques, color palettes, and approaches used to achieve each style. **Supplies list provided. Bring your own sketchbook or notebook for brainstorming and reflection.**

PG26Z-22 | **Tuesdays | Jul 7-28** (4 wk) | **6:00-8:00p**
\$130 (Members \$110); \$35 Single Session
Nicole Zurita | ND Upper Studio | Reg. by 7/5 or 2 days before

fine crafts



Bookmaking: The Zig-Zag Book

Discover the art of creating a zig zag blank book in this engaging two-part class. What is a zig zag book you ask? It's a perfect way to record and display special moments in your life and showcase both your artwork and your memories. You'll have many choices in the process to personalize and decorate your book too. Provided in this class will be all the necessary materials for construction, and step by step instructions along the way. First, we will complete a simple fold blank book, then proceed to a triangle variation fold book. Also included in this class will be suggestions for making these memory books truly unique and individual. **No need to bring anything with you, all supplies will be provided.**

MX26M-21 | Saturday | Apr 11 | 10:00-1:00p
\$55 (Members \$45) | Reg. by 4/9
Maggie Magnuson & Kathy Justis | ND Upper Studio

Flower Moon: Luna de Flor

Join us for an evening of flower arranging with fresh blooms! In this bilingual class in Spanish & English, we'll open with a brief discussion on the history and symbolism of Full Moon names, flowers native to northern Illinois and the Womanspace gardens. Instructors Nicole Zurita, a former floral designer and current hobby florist, and Maria Servin, a current floral designer will demonstrate and give guidance in the art of floral design.

MX26Z-21 | Friday | May 1 | 6:00-8:00p
\$60 (Members \$50) | Reg. by 4/30
Nicole Zurita & Maria Servin | ND Upper Studio

Whimsical Bag Charm Workshop

MUST be age 21+. Let's pretend we're tinker fairies for the night as we gather to make whimsical bag charms. Listen to music, sip on refreshing drinks, and enjoy a playful, creative gathering. Participants will design and assemble their own custom bag charms using wire, clasps, and a curated selection of charms and decorative elements. Learn simple wire-wrapping and attachment techniques to securely build a layered, personalized charm that can clip onto a purse, backpack, or keychain. **All materials are provided—just bring your whimsical imagination.**

MX26H-23 | Friday | Jul 17 | 6:00-8:00p | Reg. by 7/15
\$55 (Members \$45) | Barbara Hernandez | ND Upper Studio



Beginner Sewing Project: Bag

Suggested prerequisite: basic sewing machine knowledge. Do you want to work on a sewing project, but get lost in the instructions? This is the class for you! We will be making a cute heart shape tote bag. We will learn to follow a pattern step by step, and create a unique item to take home. **Must bring in your own machine, its manual and tool kit which includes: sharp scissors, pins, thread, bobbin, needles for your machines that match the fabric you're working with. Supply list provided.**

SW26-21 | Saturday | Jun 13 | 9:30a-12:30p | Reg. by 6/11
\$45 (Members \$35) | Stefi Kruger | ND Upper Studio

Beginner Machine Sewing Skills

Do you know how to sew? Have you NOT done it in a while? Forgot how to thread your machine? Adjust the tension? Bobbin ran out and can't remember how to do that? This class is perfect for first time sewers, sewers who need a refresher course or sewers who want to learn a new machine. We will cover proper machine settings, threading the machine, sewing with the machine and how to troubleshoot/repair machine problems. Plus, we will make a fun little project to take home with you! **Must bring in your own machine, its manual and tool kit which includes: sharp scissors, pins, thread, bobbin, needles for your machine. Supply list provided.**

SW26-22 | Saturday | Jul 11 | 9:30a-12:30p | Reg. by 7/9
\$45 (Members \$35) | Stefi Kruger | ND Upper Studio

"SOMETHING ABOUT MERRY" SPONSOR

Edward Jones



Casondra Rowley, AAMS®
Financial Advisor

4021 N Mulford Road
Loves Park, IL 61111
Bus. 815-637-1668

casondra.rowley@edwardjones.com
edwardjones.com

fine crafts



Fused Glass: Pet Portraits

Ages 8+ (with adult supervision). Bring a photo of your favorite pet and we will recreate it in fused glass! Each student will create their masterpiece on an 8"x10 piece of clear glass. We will apply frit (ground glass in varying degrees of coarse or fine) and small mosaic-style glass pieces, to create a unique remembrance of your favorite pet. Each piece will be fired in a kiln, then mounted upon a piece of wood, or in a frame, for a keepsake to treasure for a lifetime. (*See below for pick-up).

MX26S-21 | **Wednesday | Apr 29 | 6:00-8:00p**

\$75 (Members \$60) | Reg. by 4/27

Pat Sullivan | ND Upper Studio

Fused Glass: Mezuzah or Pocket Vase

Ages 8+ (with adult supervision). Choose your project: a striking fused glass mezuzah or a charming pocket vase! Design and decorate your glass front piece, which will be kiln-fired in stages to add details, shape, and structure. Mezuzahs will be finished with a gold or silver shin; vases with built-in hooks for hanging. Come create something beautiful and meaningful! (*See below for pick-up).

MX26S-22 | **Saturday | Jul 18 | 1:00-3:00p**

\$75 (Members \$60) | Reg. by 7/16

Pat Sullivan | ND Upper Studio

Fused Glass: Jewelry

Ages 8+ (with adult supervision). Create your own wearable art with this fun class! Choose from an assortment of dichroic glass, which gets a jewel-like finish when fired, and create a couple of necklaces or earrings to wear or give. In this class, you will cut glass to fit your vision (tools and safety equipment provided), and assemble your pendants or earrings. Your creations will then be fired in a kiln, and mounted on silver findings of your choice. (*See below for pick-up).

MX26S-23 | **Thursday | Aug 27 | 6:00-8:00p**

\$75 (Members \$60) | Reg. by 8/25

Pat Sullivan | ND Upper Studio

*All fused glass pieces will be ready for pickup in about a week.
Closed-toe shoes required; protective gear provided.

Earth Day: Revamping Jewelry

Ages 12+. Celebrate Earth Day by giving new life to old treasures. In this hands-on workshop, participants will learn how to creatively revamp and reimagine jewelry using a mix of provided materials and personal pieces. This class encourages mindful making, sustainability, and self-expression through reuse and redesign. **All materials are included, but participants are encouraged to bring jewelry they'd like to refresh, repair, or transform.** Whether you're updating a favorite piece or creating something entirely new, this workshop offers a fun, creative way to honor the Earth while making something uniquely yours.

MX26H-21 | **Wednesday | Apr 22 | 6:00-8:00p**

\$30 (Members \$25) | Reg. by 4/20

Barbara Hernandez | ND Upper Studio

Mother & Daughter: Bracelet Making Class

Ages 8+. Celebrate the month of May by honoring the blossoming relationships with the mother figures in our lives. This jewelry-making workshop is designed for pairs – mother and daughter, caregiver and child, or any meaningful duo – to create side by side in a supportive, intentional space. **All materials are provided, and no experience is needed.** Come ready to slow down, connect, and leave with handmade keepsakes that reflect your bond and shared growth.

MX26H-22 | **Saturday | May 22 | 1:30-3:30p**

\$60/pair (Members \$50/pair) | Reg. by 5/20

Barbara Hernandez | ND Upper Studio

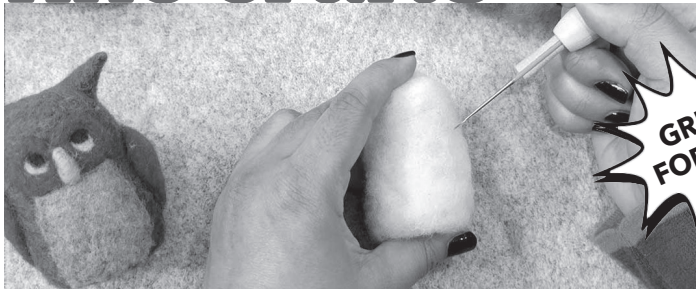
Gibbons
electric Inc.

CAR CHARGERS • STAND-BY GENERATORS • UPGRADES

815-397-1711 • www.gibbonselectric.net

fine crafts

There is no reduction in fees if you are unable to attend all scheduled classes in a series.



GREAT FOR KIDS



Felting with Amanda

Ages 12+. Perfect for beginners and returning felters alike! Poke, shape, and create – yes, we mean stab (the wool) – in this cozy, once-a-month needle felting workshop. Expect a relaxed, welcoming atmosphere, lots of laughter, and plenty of therapeutic poking. So grab some wool, embrace the process, and let's get stabby (safely and artistically, of course). You'll learn needle felting basics – materials, tools, shaping, and finishing – through a guided project, add your own creative flair, and leave with a finished felted creation to take home. Each month will be a different project – check our website for details. **All materials will be provided.**

Saturdays | 10:00-1:00p

MX26A-21 | **Apr 4** | Reg. by 4/2

MX26A-22 | **May 2** | Reg. by 4/30

MX26A-23 | **Jun 6** | Reg. by 6/4

MX26A-24 | **Jul 18** | Reg. by 7/16

MX26A-25 | **Aug 1** | Reg. by 7/30

\$55 (Members \$45) | Amanda Aures | ND Upper Studio

Textiles, Traditions & Frida Kahlo MX26C-21

Ages 12+. Discover the vibrant tradition of Mexican embroidery in this hands-on workshop. Learn basic stitches, color techniques, and traditional floral motifs while creating your own beautifully decorated piece. Perfect for beginners and anyone interested in exploring cultural textile arts in a welcoming, creative space.

Mondays | Jul 6-27 (4 wk) | 6:00-8:00p | Reg. by 7/4

\$140 (Members \$115) \$35 Single session

Paty Chavez | ND Upper Studio

Memorials at Womanspace

Honor a living or deceased person by establishing a specially named fund/feature at Womanspace. Examples:

- a tree or a total area; a bench, boulder, arbor, swing, etc.
- a special program or scholarship
- name a room or special area
- a brick in the Celebration Garden or Peace Circle.

Families and friends are welcome to discuss other ideas for memorials with staff.

Mini-Making Studio: Polymer & Mixed Media

Ages 12+. Join us for a playful, hands-on mini-making workshop where small-scale creativity takes center stage. In this two-hour class, participants will explore polymer clay alongside mixed media materials to create a unique miniature project. This workshop is beginner-friendly and designed for makers of all experience levels. We'll cover basic techniques for working with polymer clay, shaping and assembling forms, and combining materials to bring your miniature ideas to life. A guided project will be provided, with plenty of room to customize and make it your own. Perfect for anyone who loves tiny details, crafty exploration, or simply trying something new in a supportive, creative environment. **All materials provided. No prior experience required.**

MX26A-26 | **Thursday | Jul 23 | 5:30-8:00p** | Reg. by 7/21
\$60 (Members \$50) | Amanda Aures | ND Upper Studio

Collective Magic: Fairy Garden Making

Ages 12+. Begin this workshop by slowing down and stepping onto the Womanspace land together. During the first 30 minutes, we'll explore the grounds, noticing what calls to us and gathering small, natural materials to bring into our work – honoring the land as a shared space and source of inspiration. From there, we'll return indoors to create our own fairy gardens in shallow terra cotta planters. Using natural elements, provided materials, and found objects from our walk, you'll design a tiny world that reflects your imagination. Rooted in the theme of community and connection, this workshop invites us to create side by side, share ideas, and celebrate the beauty that emerges when we gather and make together. **All materials provided. No experience needed – just curiosity, creativity, and a willingness to play.** Each participant will leave with a fairy garden to take home.

MX26A-27 | **Thursday | Aug 20 | 5:30-8:00p** | Reg. by 8/18
\$65 (Members \$55) | Amanda Aures | ND Upper Studio

kids & families



the power of play: a partnership with severson dells

Session 1: The Power of Play with Mary Kay Morrison

[This session is intended for adults.]

Join author Mary Kay Morrison as she talks about her book *Legacy of Laughter: The PLAYbook* and how we all need more play in our lives. This interactive presentation will last about 90 minutes with plenty of tips and tricks on how to bring play into your families' life both indoors and outdoors.



Session 2: Experience Extravaganza

[This is an inter-generational workshop – kids are welcome.]

This immersive workshop will give you exciting play strategies to try with the littles in your life. Foster imagination, confidence, curiosity, and connection through nature play. Liz Wiener, the Public Programs Coordinator at Severson Dells, will connect her Master's Degree in Experiential Education with current research to give you practical tips you can try today!



Both Sessions: \$30/adult; \$5/kid | Single Sessions: \$20/adult; \$5/kid

Thursday | Mar 26 | 6:30-7:30p | Reg. by 3/24
Mary Kay Morrison | Reif Gallery

Saturday | Mar 28 | 10:30a-12:00p | Reg. by 3/26
Liz Wiener | Severson Dells, 8786 Montague Rd., Rockford

coming soon in june

We're thrilled to share that Womanspace has received funding to expand our kids' programming from the Bengt & Mary Kuller fund of the Community Foundation of Northern Illinois' Community Grants Program! This support allows us to offer deeper, year-round programming that blends arts, nature, mindfulness, and mentorship for youth across the Rockford region.

Kids CREATE: Cultivating Resilience, Empathy, Artistry, Tenacity, and Empowerment builds on current programming to include deeper, more accessible, year-round programming for both elementary and adolescent youth. We are grateful for this support to more intentionally align our youth programs with our larger mission of connection, empowerment, creativity, and transformation.



VISIT OUR WEBSITE FOR CLASS UPDATES WOMANSPACE-ROCKFORD.ORG



womanspace membership form

Fill out this form and mail it in with your contribution or register online at womanspace-rockford.org/member.

PRIMARY CONTACT INFORMATION New Renew Former Gift Membership Exp. Date _____

Name _____ Member# _____

Address _____ Birth Date _____

City, State, Zip _____

Home Phone _____ Cell Phone _____

E-mail _____

Emergency Contact Name & Number _____

Additional names for Family/Grand Family memberships:

How did you hear about Womanspace? _____

SIGN-UP FOR THE E-NEWSLETTER? Yes, sign me up! No, thank you! I already receive it.

CHOOSE YOUR LEVEL TODAY! Membership begins with the month the fee is paid.

Basic Member	1-yr	2-yr	3-yr	Member Plus [†]	1-yr	2-yr	3-yr
Individual (18+)	<input type="radio"/> \$50	<input type="radio"/> \$90	<input type="radio"/> \$120	Individual (18+)	<input type="radio"/> \$75	<input type="radio"/> \$150	<input type="radio"/> \$225
Family & Grand Family*	<input type="radio"/> \$75	<input type="radio"/> \$140	<input type="radio"/> \$200	Family & Grand Family*	<input type="radio"/> \$100	<input type="radio"/> \$200	<input type="radio"/> \$300

* Family include Partners or Parent(s) + Child(ren) under 18.
Grand Family includes Grandparent(s) + Grandchild(ren) under 18.

[†] We recognize that some are able & inclined to pay a higher member fee, and we appreciate your support.

I AM INTERESTED IN HELPING WITH:

- Computer (Soc. Media/Data Entry) Events (Organize/Assist) Facility (Maint./Repair/Clean) Fundraise (Grants/Sponsorships)
- Gallery (Plan/Procure/Display) Food Marketing Social Outreach
- Office Work (Reception desk) Grounds (Maint./Garden) Other _____

MEMBERS RECEIVE:

- discounted prices on most programs
- early registration for all classes
- opportunity to sell handcrafted items in Gallery2Go
- use of our library
- discounted rates on facility rentals; rent a studio locker
- space for business card display
- invitation to new member brunch
- a social group to connect with, share talents, and develop or demonstrate leadership skills

PAYMENT METHOD (4% credit card fee applies*)

Cash CHK # _____ MC* Visa* Dis* SQ*

Expiration: ____/____ CID: _____ (3 digits on card back)

OFFICE USE ONLY: FM WA

Date to _____ Notes _____



womanspace registration form

Fill out this form and mail it in with your payment or register online at womanspace-rockford.org. Please print clearly.

Name _____ Member # _____

Address, City, State, Zip _____

Phone _____ E-mail _____

Cash Check # _____ MC* Visa* Discover* Gift Certificate/Coupon (included with payment)
_____ Exp.: ____/____ CID: _____ (on card back)

COURSE #	NAME OF COURSE	START DATE	FEE
_____	_____	_____	_____
_____	_____	_____	_____
_____	_____	_____	_____
_____	_____	_____	_____
_____	_____	_____	_____

Womanspace reserves the right to use photo images taken at all programs for promotional purposes. **TOTAL ENCLOSED \$ _____**

REGISTRATION & PAYMENT

- Courses are filled on a first-come first-paid basis.
- Register and pay early to help ensure minimum enrollment is met and you have a spot.
- **Payment must be made at the time you register or your registration may be cancelled.**
- **There is no reduction in fees if you are unable to attend all scheduled classes.** Partial attendance is not encouraged.

An online account is required for all registrations. You will be prompted to give your name and e-mail at your first registration. You will then receive an e-mail with an automatically generated password that you can change at any time.

- **Online** - Visit womanspace-rockford.org to register. We accept Visa, MasterCard and Discover payments* for programs and membership.
- **By Mail** - Payment must accompany registration form. Make checks payable to WOMANSPACE. There is a \$25 fee for returned checks. Mail the registration form to: Womanspace, 3333 Maria Linden Dr., Rockford IL 61114. Payment must be received by the registration deadline date.

***There is an additional 4% service fee for credit card payments.**

CANCELLATION & REFUND POLICY

Paid enrollment in a Womanspace class must be cancelled in order for the student to be eligible for a refund. A refund (minus a \$10 non-refundable deposit, minus the 4% service fee) will be granted according to the following:

- If you cancel up to 7 calendar days prior to a program or event, your payment, less the non-refundable deposit and service fee, will be refunded.
- If you cancel 4 days in advance, you may have your payment, less the non-refundable deposit, transferred to another program.
- **IN THE LAST 3 DAYS, THERE ARE NO REFUNDS.**
- Womanspace reserves the right to cancel a course due to insufficient enrollment by the registration deadline, in which case, full refunds will be made.

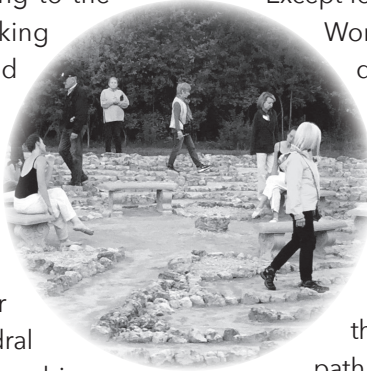
**Womanspace supports a healthy working environment.
If you are not feeling well, please stay home. Thank you!**

our labyrinth



Come discover the ancient practice of circling to the center. The Womanspace Labyrinth is a walking meditation path that is both therapeutic and energizing. A devoted team of volunteers, led by a core group of twelve women, broke ground on our prairie in 2000 and dedicated the Labyrinth on September 22, 2003.

Labyrinths have been in use for over 4000 years. Our eleven-circuit design is modeled after the labyrinth in the medieval Chartres Cathedral in France. It is the largest in Northern Illinois and is listed on the National Labyrinth Registry. The basic design is fundamental to nature as well as many cultures and religious traditions. This sacred space is our gift to the community and available to anyone seeking quiet and reflection.



Except for times when special events are scheduled, the Womanspace Labyrinth is open to visitors seven days a week during daylight hours. To reach the labyrinth, follow the ribbon hoops at the entrance to the woods on the right side of the circle drive. It is not a maze, so once you reach the center, you will have walked on every part of the path. There are no rules, but most prefer to walk to the rosette at the heart of the design, contemplate the experience, and then retrace each step as the path unwinds. Both inward and outward trips offer powerful life metaphors and insights.

If you want to reserve the labyrinth for a special event, please call Womanspace for more information.

ROCKFORD
UNIVERSITY
— 1847 —

**WE'RE IN THE
LEADER MAKING
BUSINESS.**

WWW.ROCKFORD.EDU/ADMISSION/GRADUATE/MBA/

JANE ADDAMS, 1881



womanspace

3333 Maria Linden Drive
Rockford, IL 61114-5481

CHANGE SERVICE REQUESTED

Non-Profit Organization
U.S. POSTAGE
PAID
Rockford, Illinois
Permit No. 380



yourguide

MAR-AUG 2026

Womanspace embraces diversity and strives to create an inclusive, welcoming community for all people. Our space is one of respect, connection, empowerment and kindness, where everyone is valued and encouraged to express their authentic selves.



For up-to-date programs, scan this code with your phone's camera to visit our web site.



Illinois
ARTS
Council

Womanspace gratefully acknowledges support from the Illinois Arts Council.



Womanspace programs are partially supported by a grant from the Illinois Arts Council through federal funds provided by the National Endowment for the Arts.

Important Dates to Remember

- Mar 7 Restyle the Runway: Fashion Show & Luncheon
- Mar 17 Application deadline for the Deborah Newton Awards
- Mar 22 Sound Bowl Bath
- Mar 25 Games in the Gallery: MAHJONG
- Mar 26/28 The Power of Play: A Partnership with Severson Dells
- Apr 4 Felting with Amanda
- Apr 15 Application deadline for Fine Arts High School Scholarship
- Apr 17 Paint & Sip: Tote Bag Night
- Apr 22 Earth Day: Revamping Jewelry
- Apr 25 Saturday Mini-Retreats
- May 1 Rockford Art Guild Show Opening Reception
- May 9 BloomFest: Spring Art & Wellness Festival
- May 15 Gongtopia
- May 29-31 Glitzy Garage Sale
- Jun 20 Summer Solstice Gathering
- Jun 26 Kelly James: "Find Your Light" Opening Reception
- Jul 7 The Painting Studio: Art Movement Series
- Jul 20-31 Beat the Heat Online Auction
- Jul 31 La Onda presents: An Evening with Frida Kahlo
- Aug 21 Una Ryan & Friends: "On the Road Again" Opening Reception
- Aug 29 Wild Food/Wild Medicine with Linda Conroy
- Sep 18 One Enchanted Evening Benefit

So many new and interesting programs throughout...just open & look!