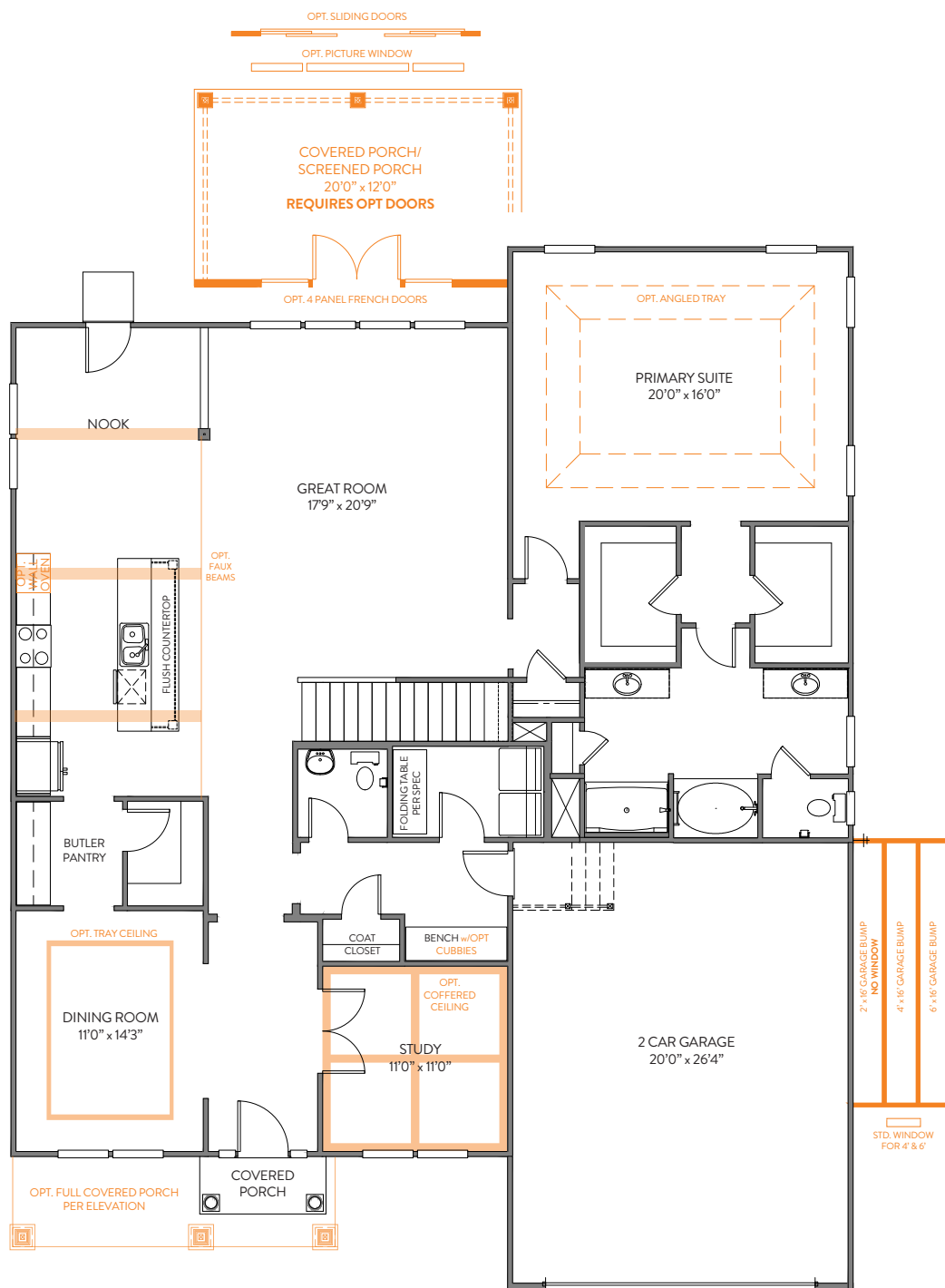


The Kensington 3120

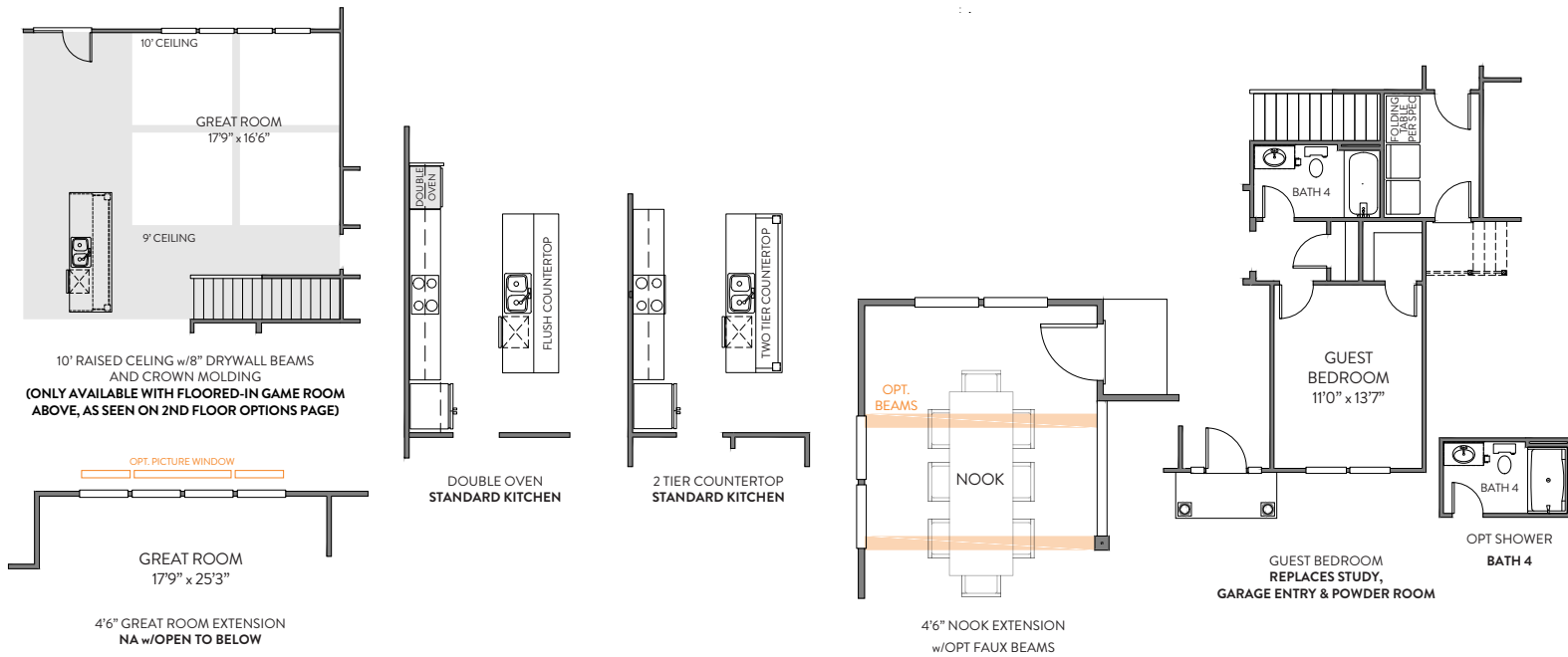
3,461 - 4,167 sq. ft. | Open | First Floor

REV 12.20.24

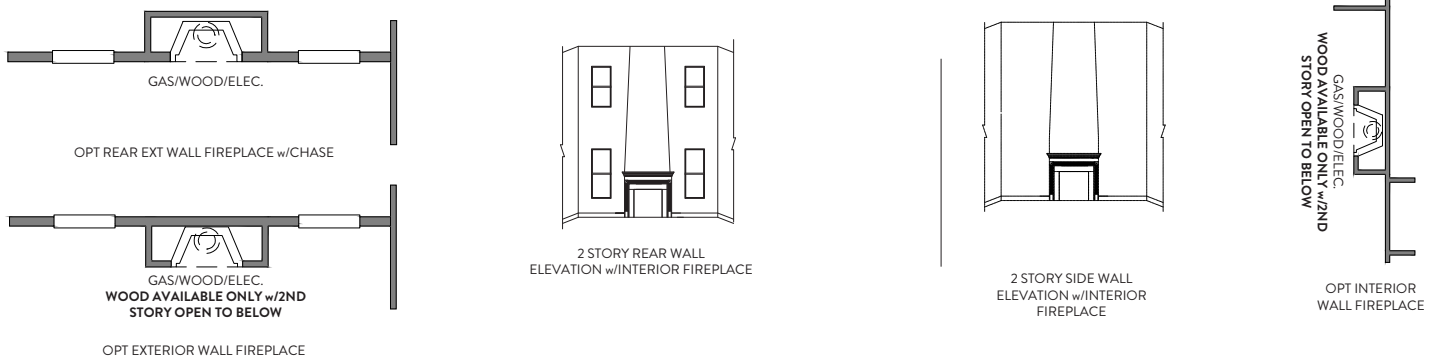


Options

First Floor Options

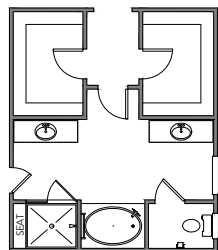


Fireplace Options

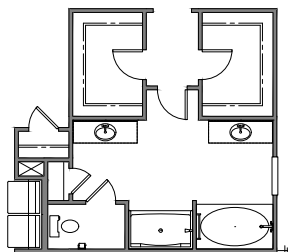


Options

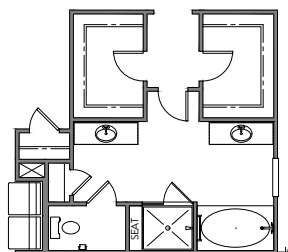
Primary Bath Options



LUXURY BATH OPTION 3
42" X 60" GARDEN TUB w/
CERAMIC TUB SURROUND
42" X 48" FRAMED TILE SHOWER BASE
TILE WALLS w/12" TILE SEAT

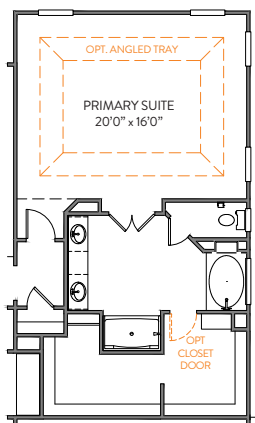


LUXURY BATH OPTION 4
42" X 72" GARDEN TUB
35" X 60" FIBERGLASS SHOWER UNIT

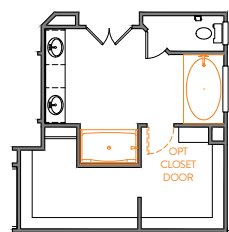


LUXURY BATH OPTION 6
42" X 72" GARDEN TUB w/
CERAMIC TUB SURROUND
42" X 48" FRAMED TILE SHOWER BASE
TILE WALLS w/12" TILE SEAT

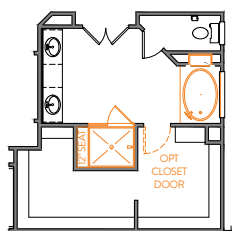
Alt. Primary Bath Options



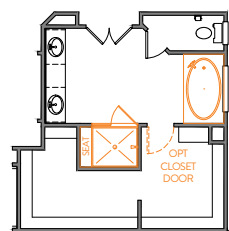
ALT PRIMARY BATH



LUXURY BATH OPTION 4
42" X 72" GARDEN TUB
35" X 60" FIBERGLASS SHOWER UNIT
FOR ALT PRIMARY BATH



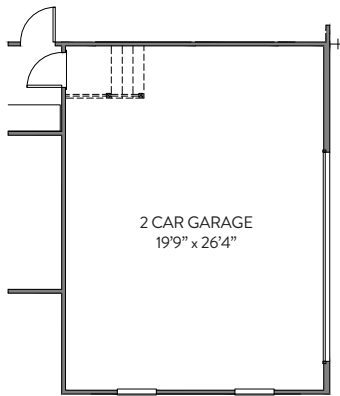
LUXURY BATH OPTION 3
42" X 60" GARDEN TUB w/
CERAMIC TUB SURROUND
42" X 48" FRAMED TILE SHOWER BASE
TILE WALLS w/12" TILE SEAT
FOR ALT PRIMARY BATH



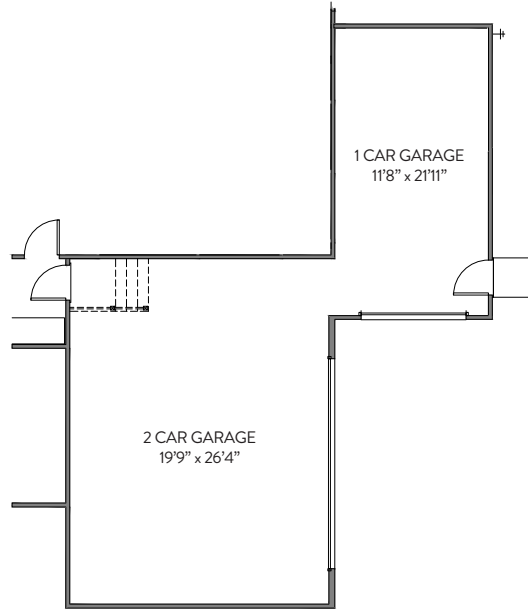
LUXURY BATH OPTION 6
42" X 72" GARDEN TUB w/
CERAMIC TUB SURROUND
42" X 48" FRAMED TILE SHOWER BASE
TILE WALLS w/12" TILE SEAT
FOR ALT PRIMARY BATH

Options

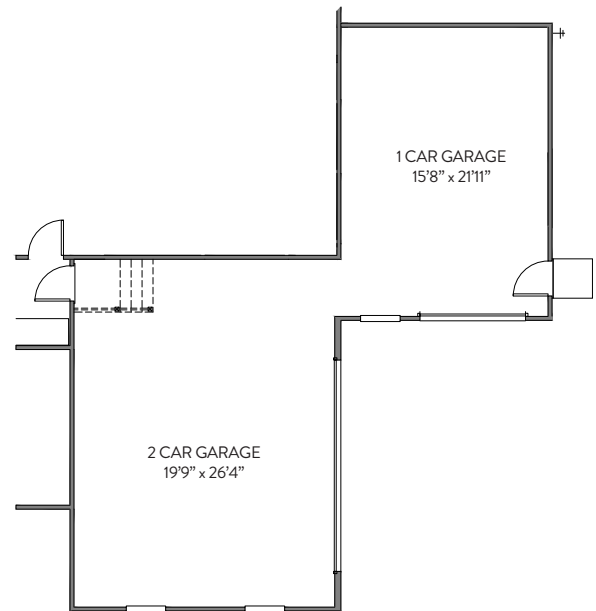
Garage Options



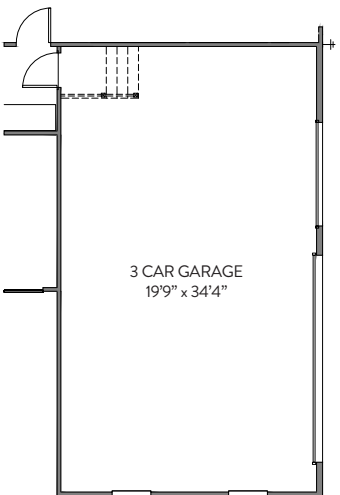
2 CAR SIDE LOAD GARAGE



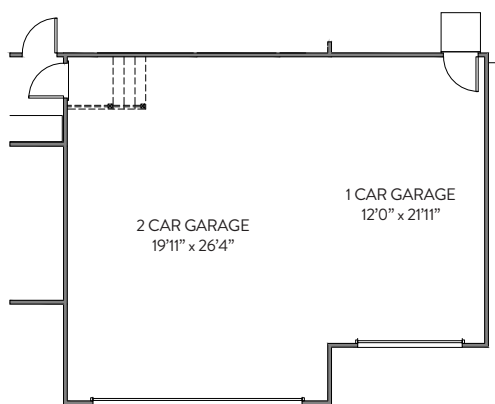
3 CAR COURTYARD GARAGE OPT 1



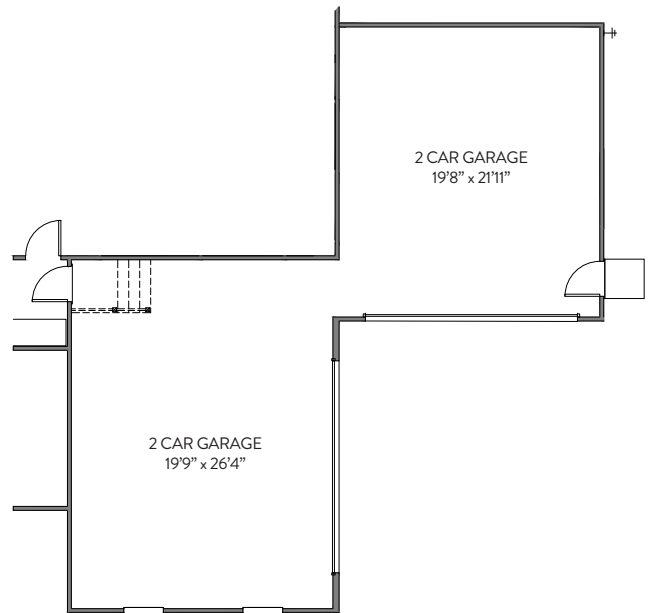
3 CAR COURTYARD GARAGE OPT 2



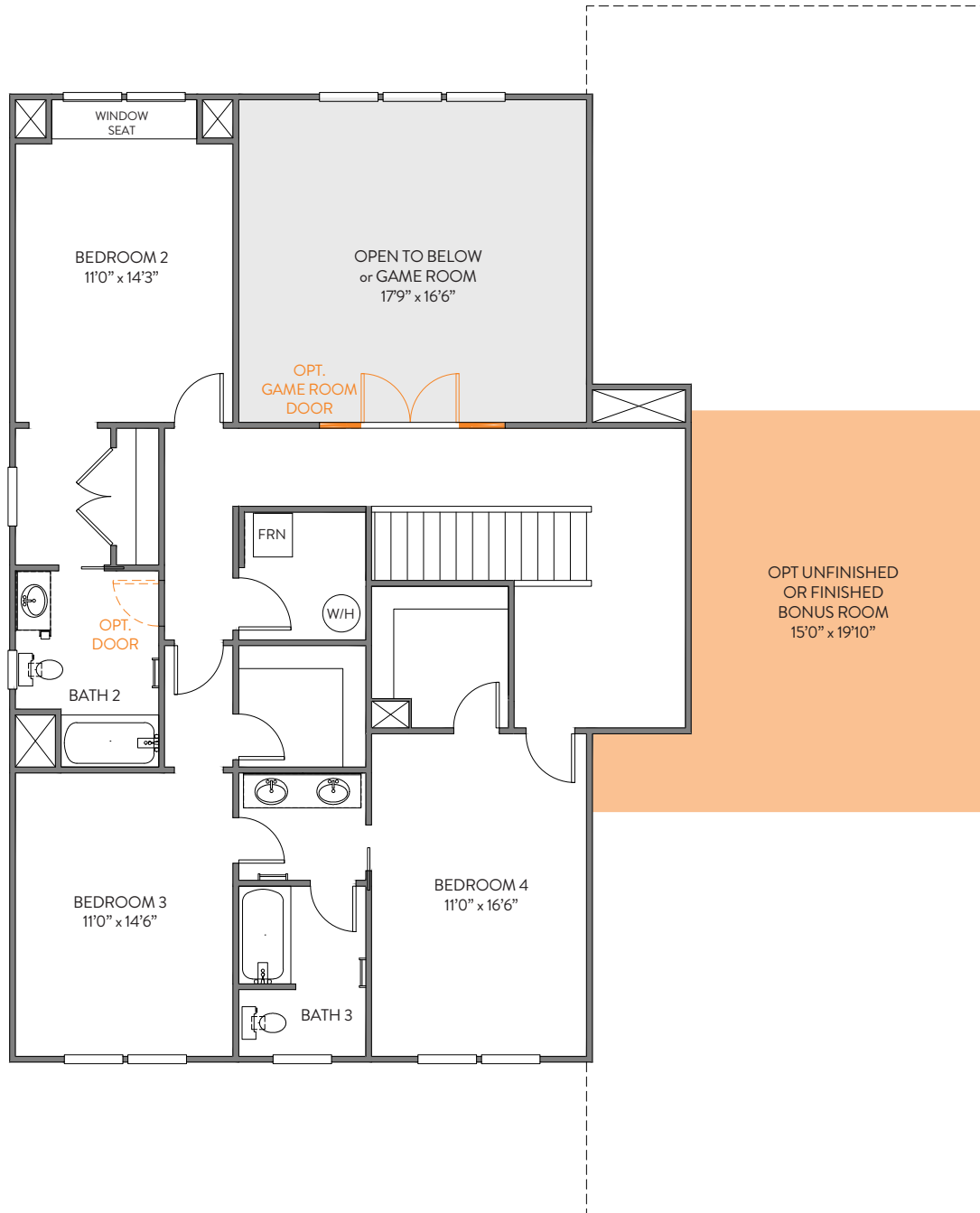
3 CAR SIDE LOAD GARAGE
ADDS 8' TO FRONT OF GARAGE



3 CAR FRONT LOAD GARAGE

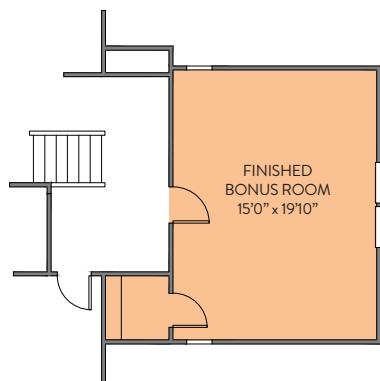


4 CAR COURTYARD GARAGE

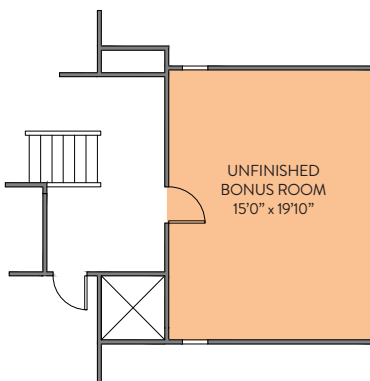


Options

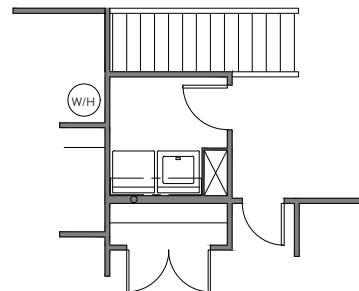
Second Floor Options



FINISHED BONUS ROOM



UNFINISHED BONUS ROOM

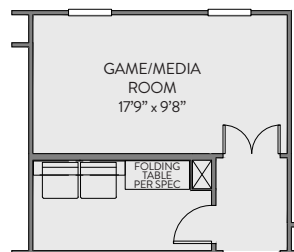


LAUNDRY ROOM OPTION

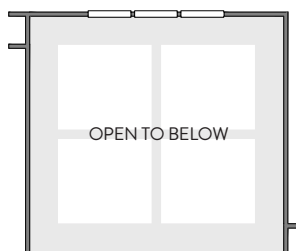
Open to Below Options



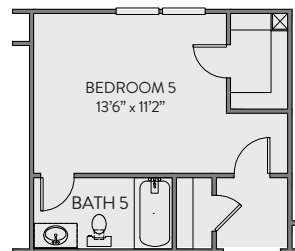
STANDARD GAME ROOM/MEDIA ROOM w/OPT
10' GREAT ROOM CEILING
INCLUDES STEP UP



GAME ROOM/MEDIA ROOM
w/LAUNDRY



2 STORY GREAT ROOM
w/8" DRYWALL BEAMS
AND CROWN MOLDING



BEDROOM w/BATH
SHOWER AVAILABLE ILO BATH