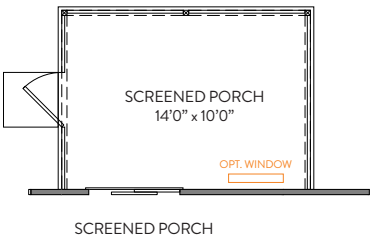
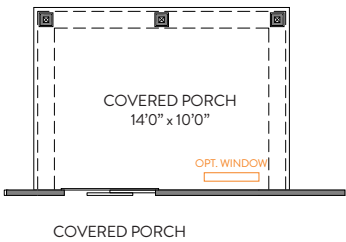
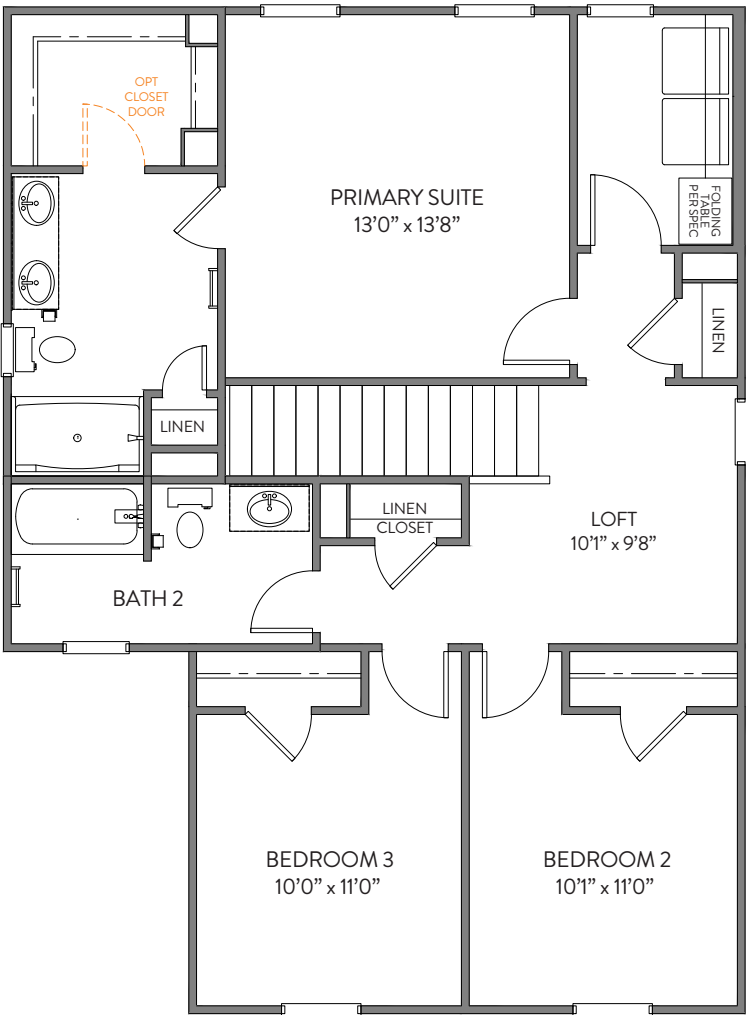


Options

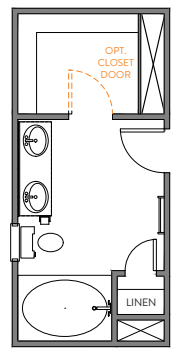
First Floor



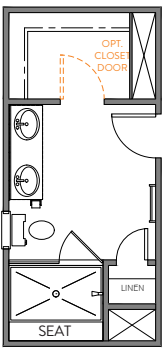


Options

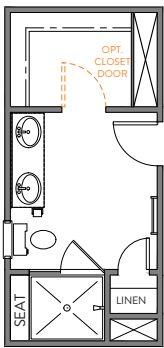
Primary Bath



GARDEN TUB/SHOWER
LOSE 4.5" FROM CLOSET

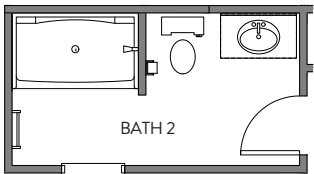


LUXURY SHOWER
LOSE 8.5" FROM CLOSET

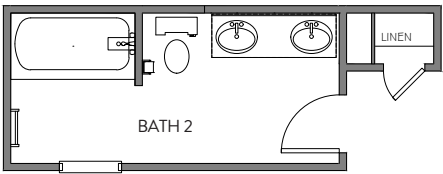


LUXURY SHOWER 2
LOSE 13.5" FROM CLOSET

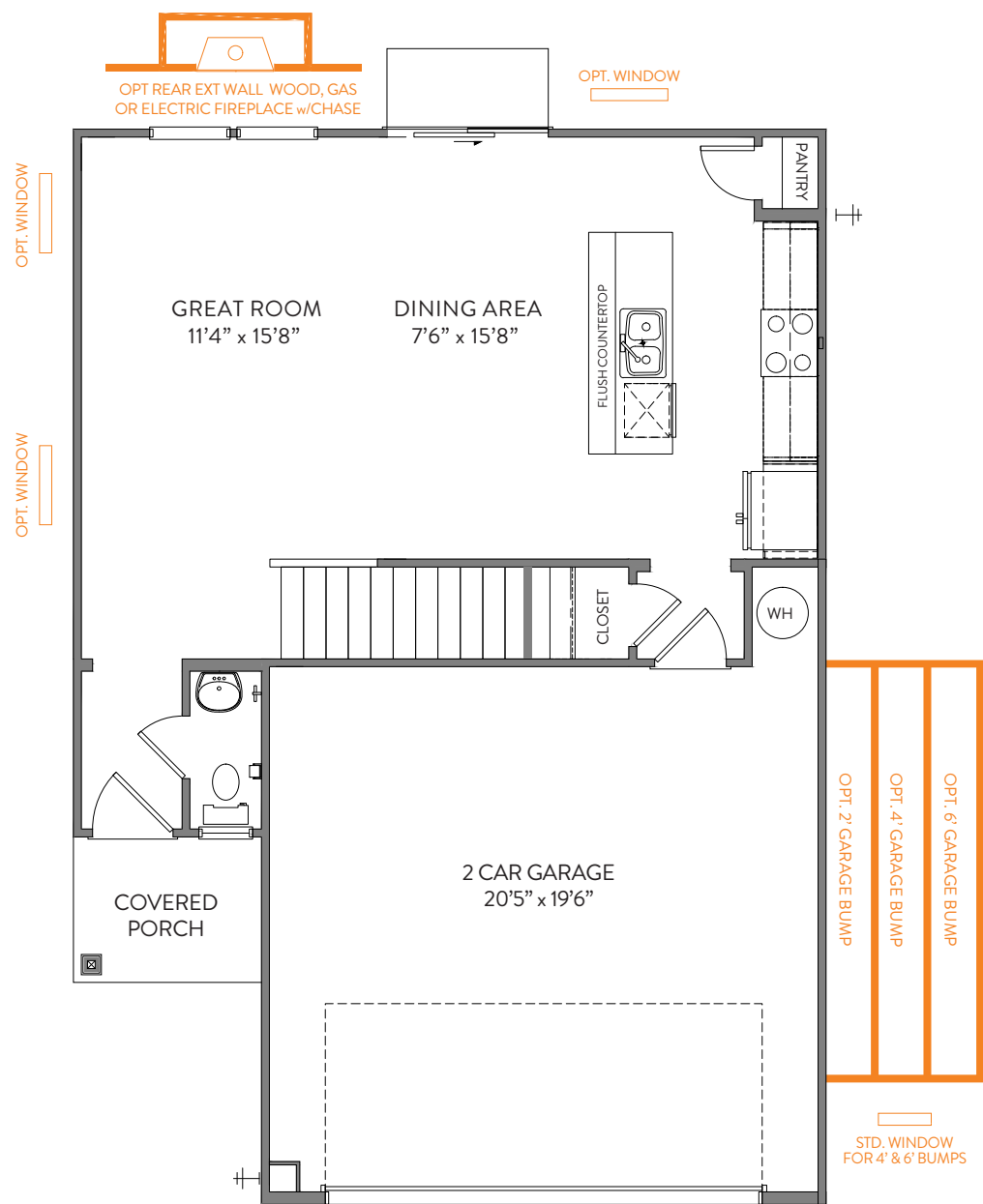
Bath 2



SHOWER

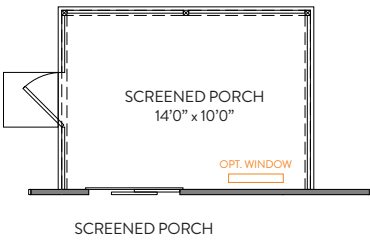
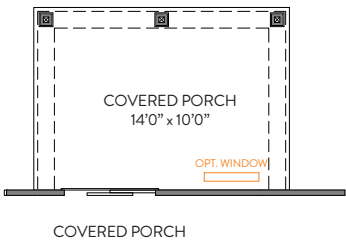


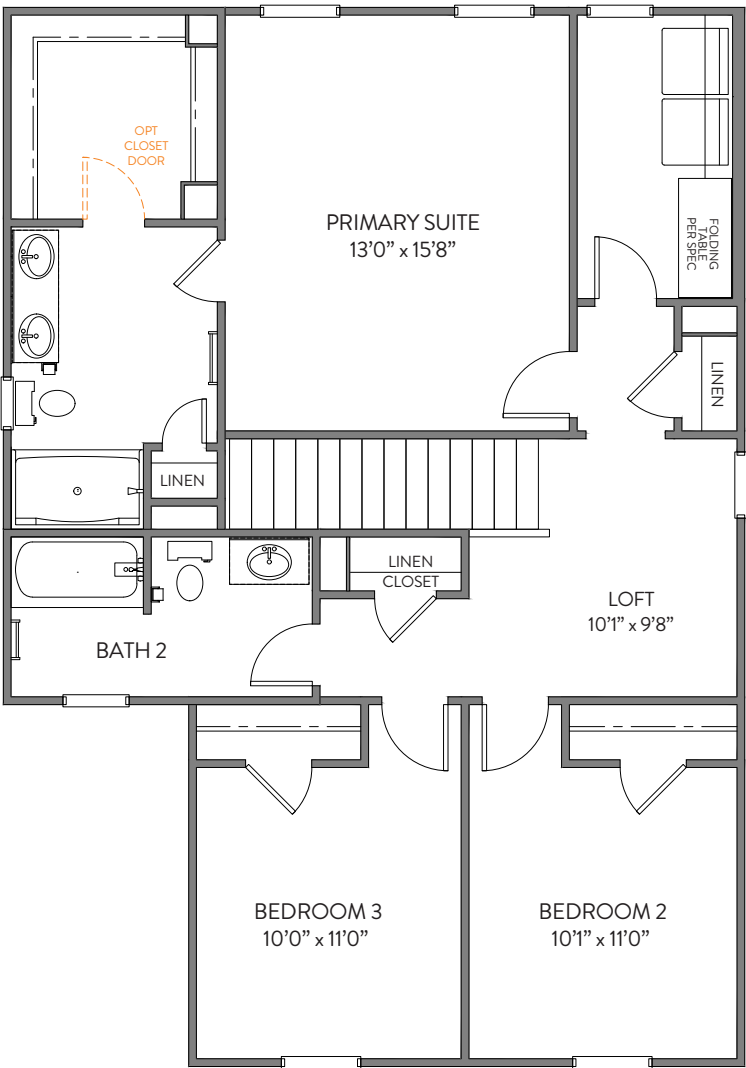
DUAL BOWL VANITY
TAKES 1'10" FROM LINEN CLOSET



Options

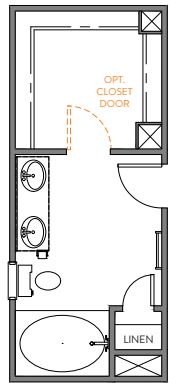
First Floor



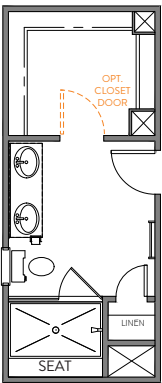


Options

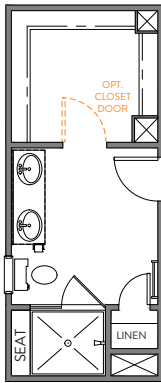
Primary Bath



GARDEN TUB/SHOWER
LOSE 4.5" FROM CLOSET

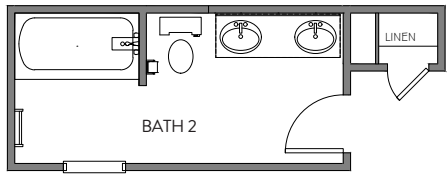
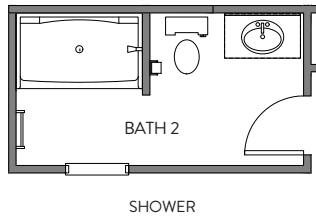


LUXURY SHOWER
LOSE 8.5" FROM CLOSET



LUXURY SHOWER 2
LOSE 13.5" FROM CLOSET

Bath 2

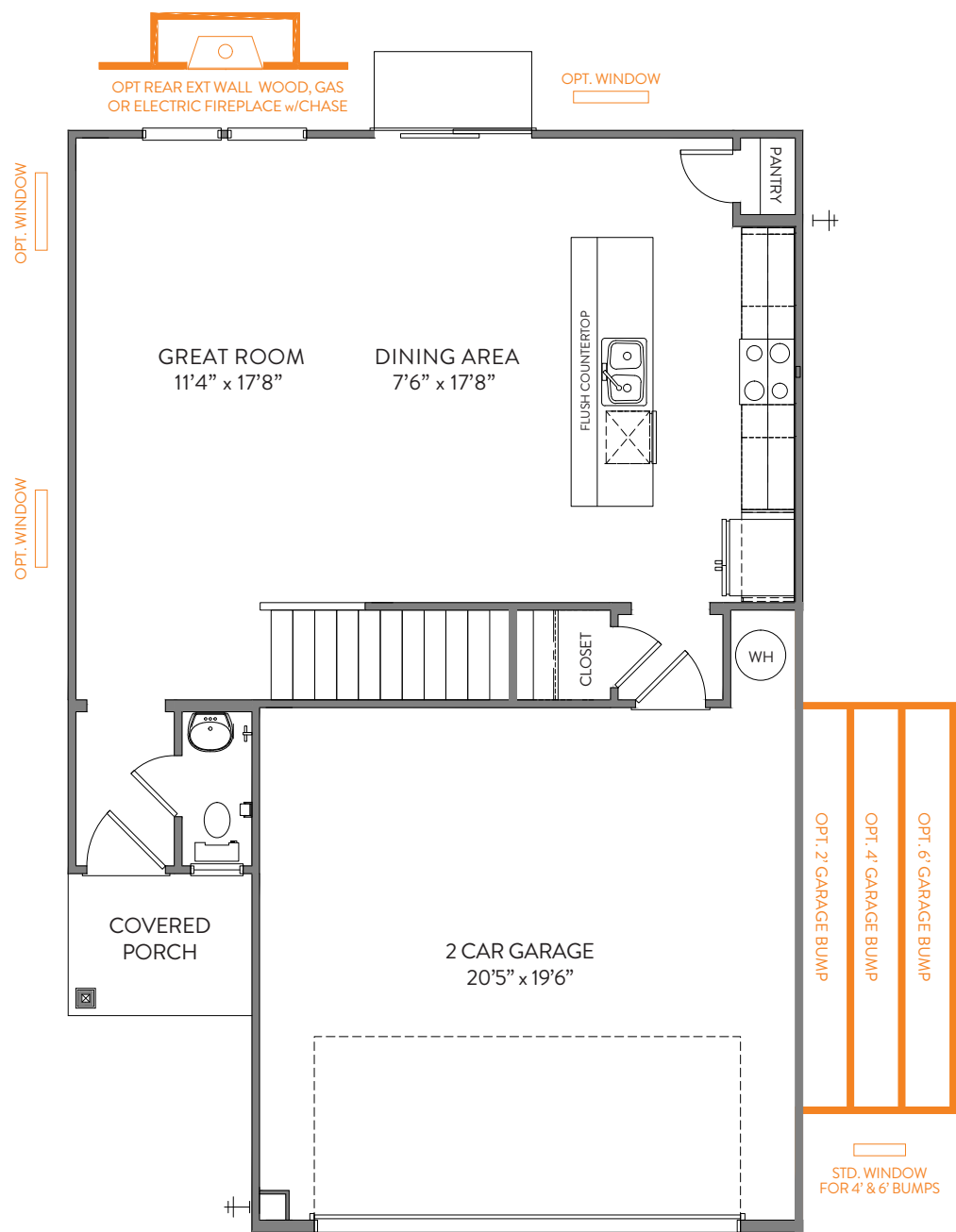


DUAL BOWL VANITY
TAKES 110" FROM LINEN CLOSET

The Alder 1616

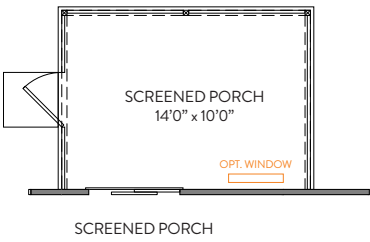
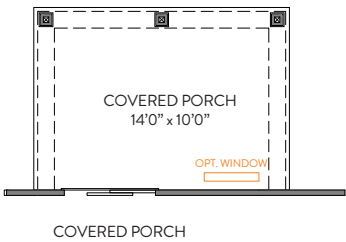
1,732 sq. ft. | Open | First Floor

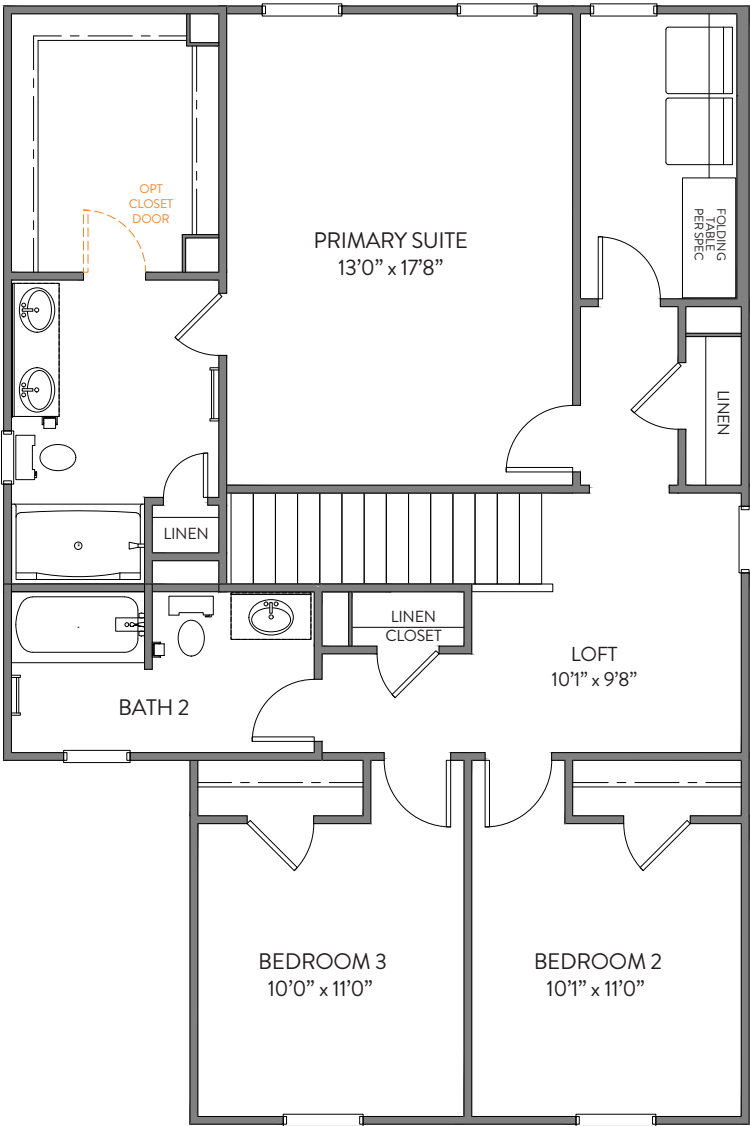
5.9.25



Options

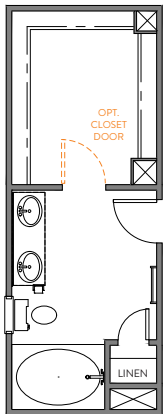
First Floor



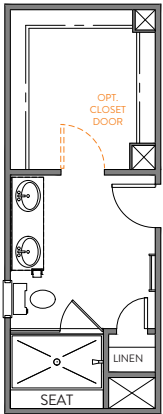


Options

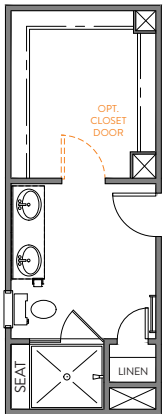
Primary Bath



GARDEN TUB/SHOWER
LOSE 4.5" FROM CLOSET

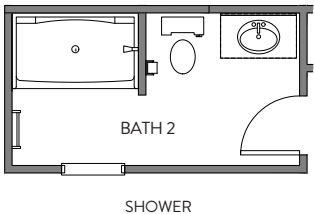


LUXURY SHOWER
LOSE 8.5" FROM CLOSET

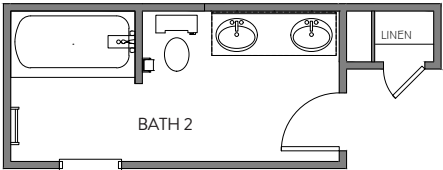


LUXURY SHOWER 2
LOSE 13.5" FROM CLOSET

Bath 2



SHOWER



DUAL BOWL VANITY
TAKES 1'10" FROM LINEN CLOSET