



GIISHKAANDAGO'IKWE

HEALTH SERVICES

SERVICE REPORT

QUARTER 03

OCTOBER 2025 - DECEMBER 2025

*Standing together and working toward a common goal.
Mino Aгаа Win for the Anishinaabeg.*



TABLE OF CONTENTS



GIISHKAANDAGO'IKWE
HEALTH SERVICES

Public Health

Community Health Nursing	03
Environmental Public Health	04

Maternal Child Health

Indigenous Midwifery	06
Children's Oral Health Initiative	08

Child's First Initiative

Child's First Initiative	09
--------------------------------	----

Home and Community Care

Home and Community Care	12
Foot Care & Diabetes	13

Mino Ayaa Ta Win Healing Centre

Withdrawal Management Services.....	14
Rapid Access Addiction Medicine Clinic	14
Bed-Based Treatment.....	15

Mental Health Services

Clinical Case Manager	16
Mental Health Counsellors & Therapist	17
Community Cultural Support Worker	18

Social Emergencies

Mental Wellness Workers	20
Mobile Crisis Response	22
Training & Development Coordinator.....	23
Social Emergencies Coordinator	25
Land Based Counsellors	26
Mememgwaawag Liason/Case Manager	29

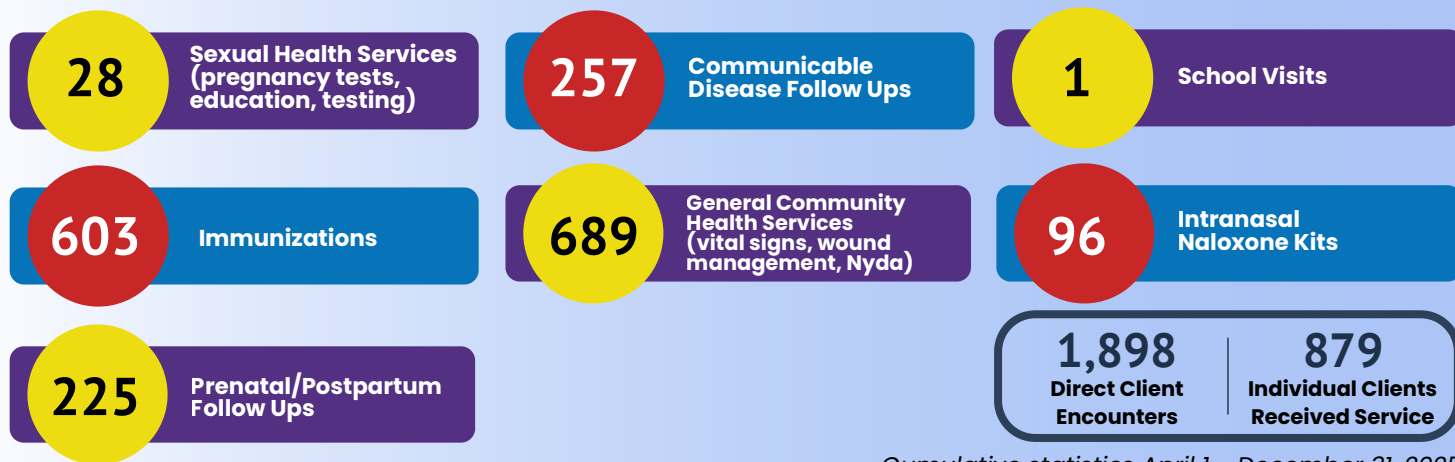


COMMUNITY HEALTH NURSING: HIGHLIGHTS



The Community Health Team administered a total of **266 influenza vaccinations and 130 Covid-19 vaccinations across all communities**. Clinics were provided in all seven communities we service, ensuring equitable access to immunization services to all community members. Through a combination of scheduled and community-based clinics, the community health team **supported timely vaccination, reduced barriers to access and helped protect community members** against seasonal influenza and Covid-19. These efforts demonstrate the continued commitment to prevention, community wellness and responsive service delivery.

COMMUNITY HEALTH NURSING: CLIENT ENCOUNTERS



Cumulative statistics April 1 - December 31, 2025

COMMUNITY HEALTH NURSING: COMMUNITY EVENTS





ENVIRONMENTAL PUBLIC HEALTH: HIGHLIGHTS



During this quarter, the Environmental Public Health Team **provided a total of 93 consultations addressing a wide range of environmental public health issues.** These consultations included responding to inquiries, providing guidance, and supporting communities on matters related to water safety, food safety, housing conditions, waste managements and communicable disease prevention. In addition, **the team conducted 67 in person community visits to conduct onsite assessments, inspections, follow up activities and relationship building** with community partners.



Our team **investigated a reported discharge of untreated sewage effluent into the environment.** In response, the Environmental Health Team conducted a site assessment and collected eight wastewater effluent samples, which were submitted to the laboratory for analysis. Upon receipt and review of the laboratory results, the community was informed of the potential risk associated with the discharge. **The team worked closely with community leadership, Indigenous Services Canada and the Ministry of Environment to coordinate response efforts, facilitate necessary repairs and implement measures to mitigate the identified health risks.** Ongoing communication and collaboration continues to reduce the potential impacts on community health and the environment.



On December 2, and 3 2025, the **Environmental Public Health Officer provided Safe Food Handling course to eight MATW employees.** The two-day training covered essential food safety practices, including prevention of foodborne illness, safe food preparation and storage, temperature control, and hygiene practices. We are excited to announce that all eight participants completed the course requirements and received their Safe Food Handling certifications!

ENVIRONMENTAL PUBLIC HEALTH: CLIENT ENCOUNTERS

41 Inspections: (premises, housing & septic installations)

292 Bacteriological Analysis Samples

293 Food, Health, & Important Consumer Recall Notices/Warnings

9 Boil Water Advisories Issued

198 Quarterly Chemistry Water Samples

9 Boil Water Advisories Lifted

33 Investigation of animal bite exposure to ensure no risk of rabies transmission

74 Additional Water Samples Obtained

200 Comprehensive Annual Sampling

280 Community Consultations

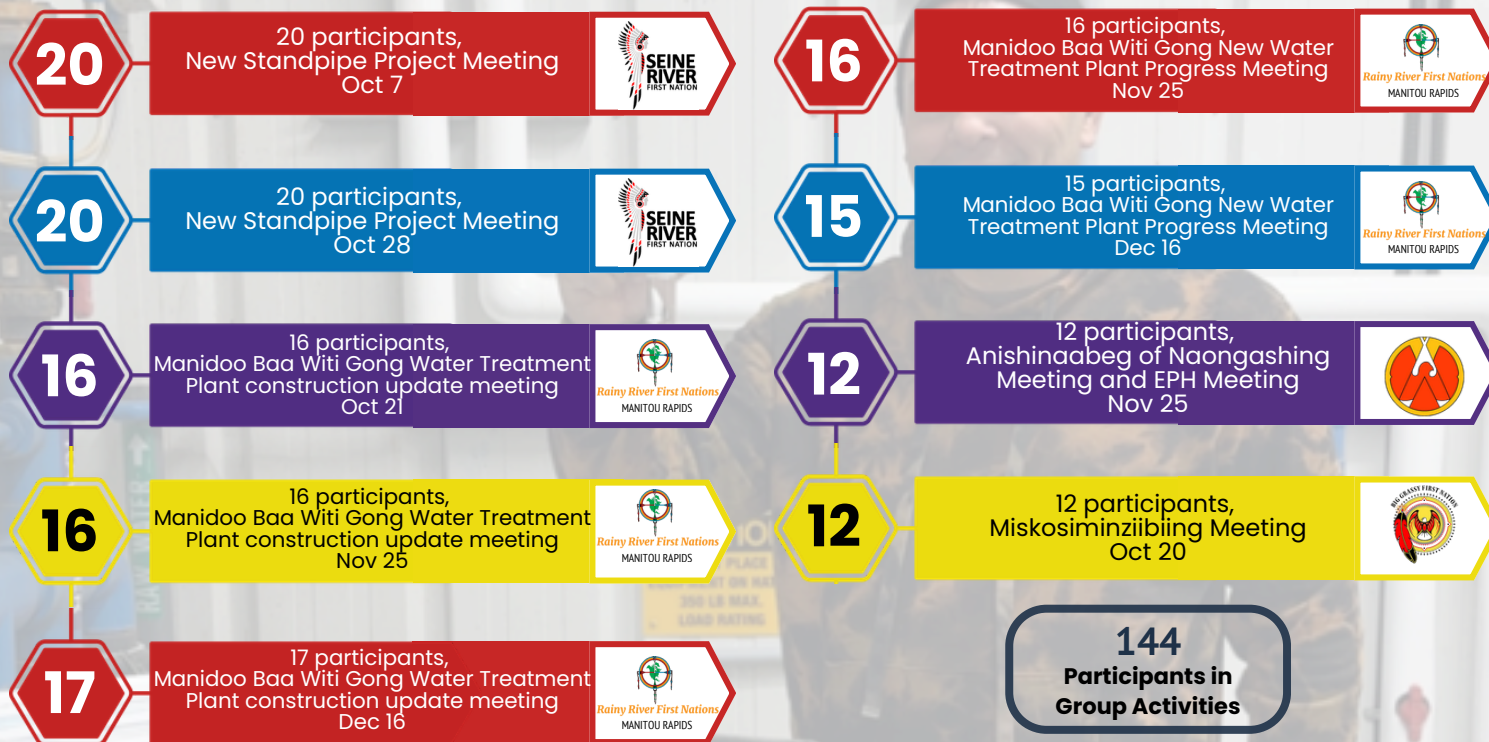
40 Lead in Drinking Water Samples

1469
Direct Client Encounters

Cumulative statistics April 1 - December 31, 2025



ENVIRONMENTAL PUBLIC HEALTH: GROUP ACTIVITIES



ENVIRONMENTAL PUBLIC HEALTH: COMMUNITY EVENTS





INDIGENOUS MIDWIFERY: HIGHLIGHTS

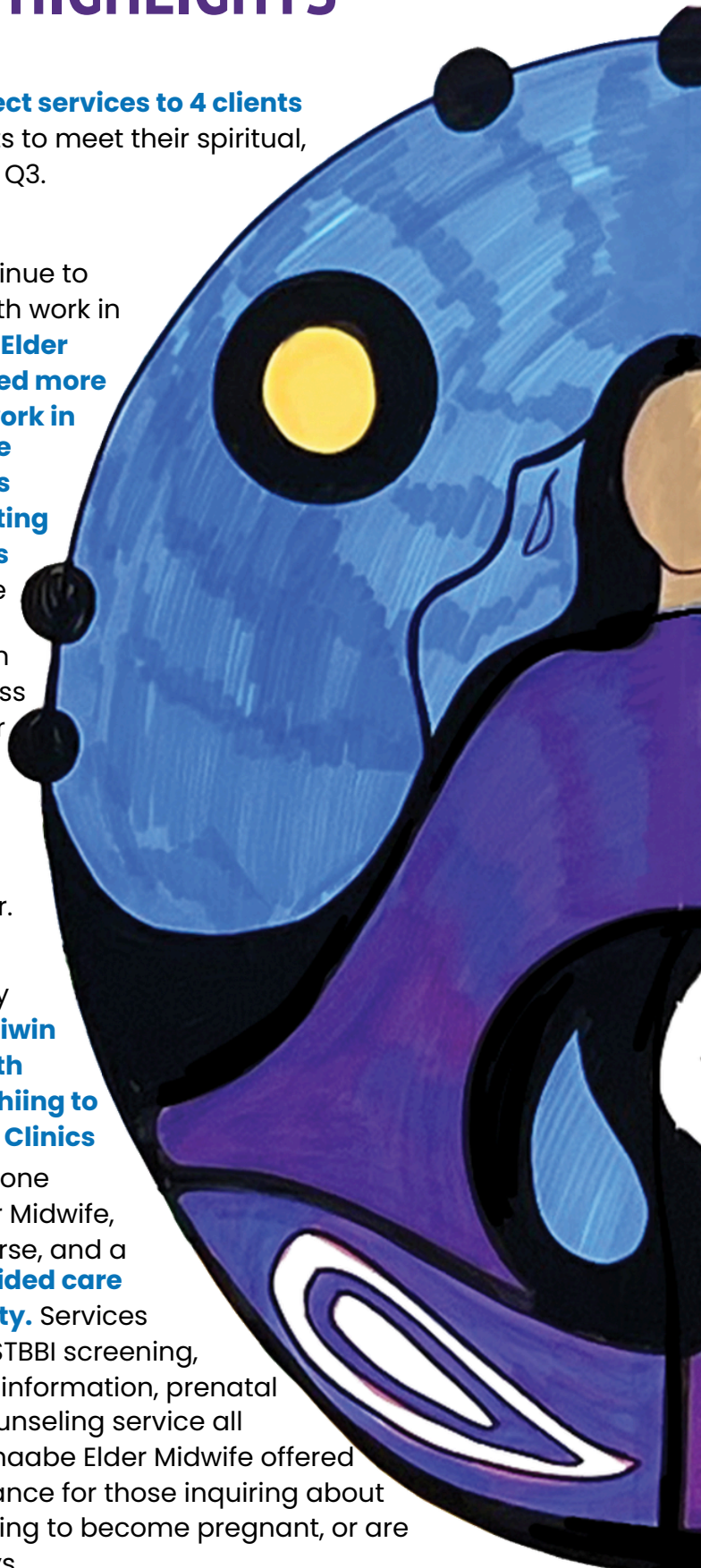


Anishinaabe Elder Midwife provided direct services to 4 clients with ongoing pre and post-natal supports to meet their spiritual, physical, mental and emotional needs in Q3.

Building Our Birth Work Bundle: We continue to focus on building capacity to support birth work in our Communities. **With the Anishinaabe Elder Midwife, 2 recently trained Doulas learned more about midwifery and supporting birth work in Communities through attendance at the National Council of Indigenous Midwives (NCIM) Annual Gathering and participating in the Canadian Association of Midwives (CAM) Conference November, 2025.** The NCIM Annual Gathering was a two-day event designed to support the restoration and growth of Indigenous Midwifery across many Nations' territories. It was a time for those that support the return of birth including Elders, birth workers, health leaders, partners, and midwives to share stories, celebrate culture, build relationships, and learn from one another.

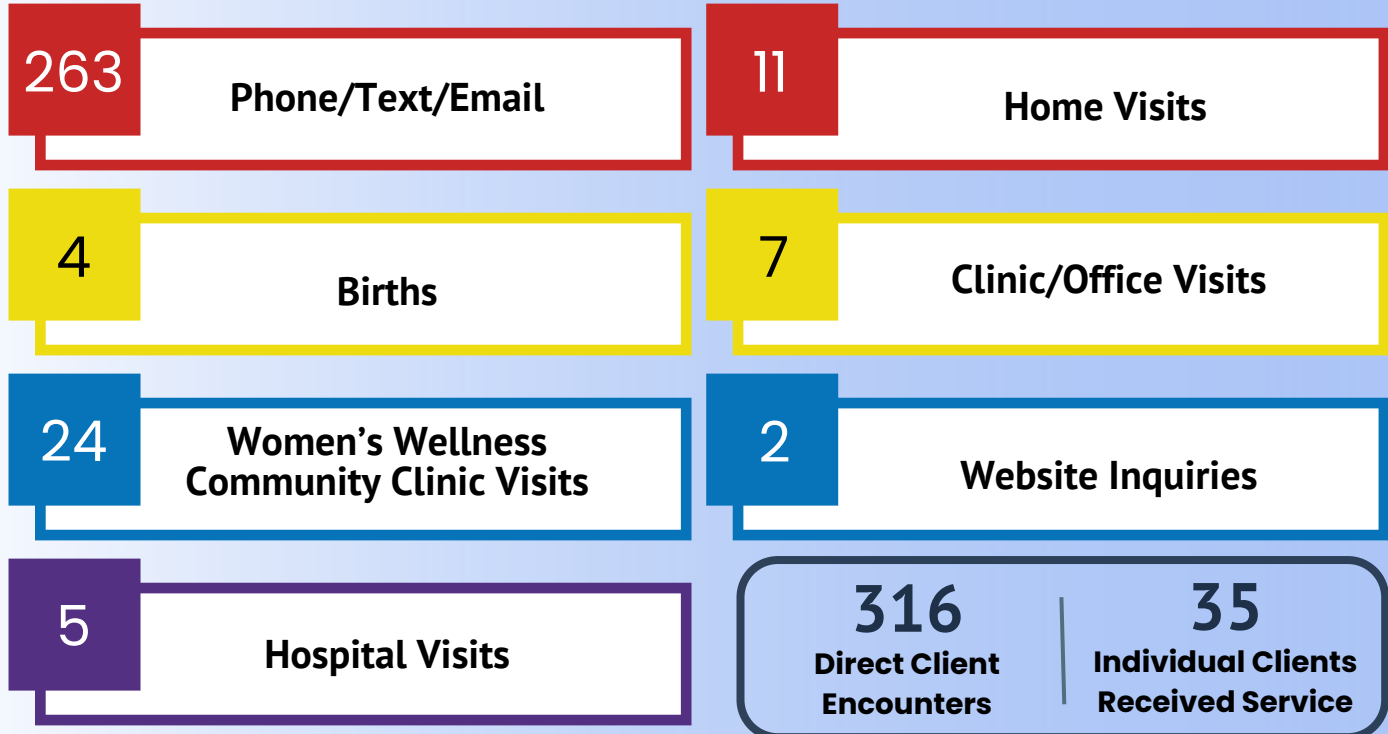


Women's Wellness: Indigenous Midwifery Program **collaborated with Gizhewaadiziwin Health Access Centre, Community Health Program and Anishinaabeg of Naongashiing to plan and implement Women's Wellness Clinics in Community.** The clinic offered one on one appointments with the Anishinaabe Elder Midwife, Nurse Practitioner, Community Health Nurse, and a Mental Health Therapist. The Clinics **provided care rooted in culture, respect and community.** Services offered by providers included Pap tests, STBBI screening, breast health education, sexual wellness information, prenatal and postpartum support and drop-in counseling service all within a culturally safe space. The Anishinaabe Elder Midwife offered traditional knowledge, support and guidance for those inquiring about the Indigenous Midwifery Program, planning to become pregnant, or are in the prenatal or early parenting journeys.



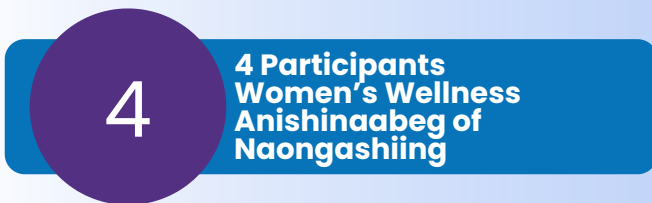


INDIGENOUS MIDWIFERY: CLIENT ENCOUNTERS

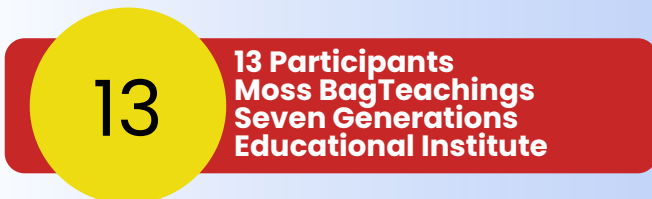


Cumulative statistics April 1 - December 31, 2025

INDIGENOUS MIDWIFERY: GROUP ACTIVITIES



INDIGENOUS MIDWIFERY: COMMUNITY EVENTS



MATERNAL CHILD HEALTH



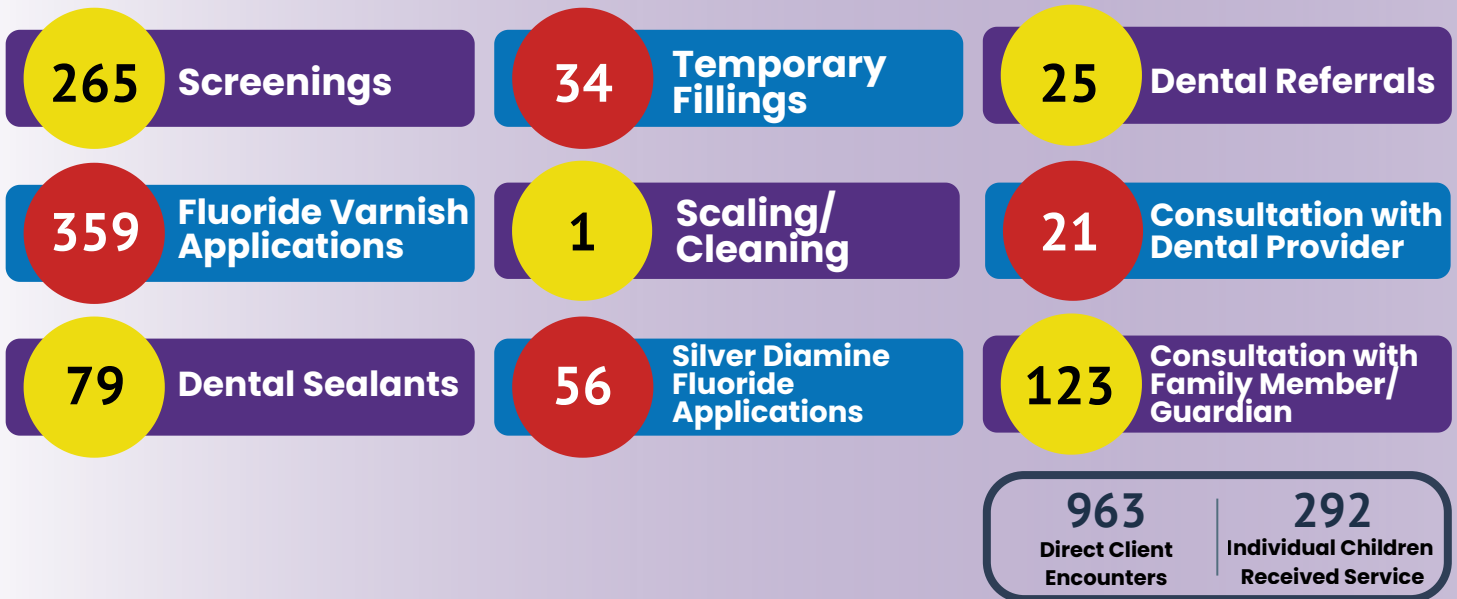
CHILDREN'S ORAL HEALTH INITIATIVE: HIGHLIGHTS

In the third quarter, the COHI team resumed preventative dental services for children through Grade 8 at Mikinaak Onigaming, Pegamigaabo, and Zhingwaako Zaaga'Iganing schools.

Attended the ISC Ontario Region Annual COHI Meeting on November 27, 2025, which focused on calibration and data form review.

To recognize the contributions of community COHI Aides, the COHI team celebrated the holiday season with a gathering on December 4, 2025. Activities included porch pot making at Lowey's Greenhouse and lunch at the Flint House.

CHILDREN'S ORAL HEALTH INITIATIVE: CLIENT ENCOUNTERS



Cumulative statistics April 1 - December 31, 2025

CHILDREN'S ORAL HEALTH INITIATIVE: COMMUNITY EVENTS





CHILD'S FIRST INITIATIVE: HIGHLIGHTS



The CFI team provided weekly clinical and case management support to children and families from the Southern Treaty 3.



During this quarter, the team **supported children and families with school support and navigation identifying needs, plans for service and intervention.** The CFI team also continued **supporting the transition to school plans and identified goals.** Case managers focused on individualized meetings at schools, plans for service with children and families and collaboration with community education departments, Community Care Prevention teams and health professionals.



Early Years Playgroups were offered in Anishinaabeg of Naongashiing, Chima'aganing, Nigigoonsiminikaaning, Couchiching, Mishkosiminziibiing Nations, Mitaanjigamiing, Onigaming, Rainy River and Naicatchewenin First Nations. These groups are open to families currently supported by the Child's First Initiative team and **focus on play based learning, companionship, and a support network for parents engaged in the group.** The playgroups offered **provided opportunities for the Child's First Initiative team to identify future needs to support children and families that would otherwise not be available.** These groups have been very successful and have strengthened relationships within the communities both with children and families as well as community partners. The Community Resource Workers also collaborated with Gizhewaadiziwin Health Access.



The CFI team **hosted a Cook and Connect sessions in Couchiching First Nation as well as the Minwanjigedaa Cooking Workshop.** The Cook and Connect session brought youth, ages 12 and over, together to **learn about healthy foods and basic cooking skills** in a fun and supportive environment, while Kids the Minwanjigedaa workshop **encouraged children to participate in the preparation and cooking of a meal and a sit down dinner following with their families.** The Dietitian lead these cooking activities, but was joined an interdisciplinary team of Physiotherapists, Occupational Therapists, Case Managers, and Children Mental Health Therapists who were all there to support the activities and offer any support for the youth/children if needed.



In December, the CFI team **focused on activities for children to do over their winter break and Christmas activities** while also prepared the winter/spring session planning.



CHILD'S FIRST INITIATIVE: CLIENT ENCOUNTERS

279 Speech Language Pathologists

799 Occupational Therapists

787 Communication Assistants

573 Occupational & Physical Therapy Assistants

897 Children's Mental Health Therapists

279 Dietitian

438 Physiotherapists

2909 Case Manager/
Family Navigators

423 Infant Child Development (ICD)/Family Navigator

10 Cultural Support Worker

327 Behaviour Consultant

7814 Direct Client Encounters | **454** Individual Children Received Service

Cumulative statistics April 1 - December 31, 2025

CHILD'S FIRST INITIATIVE: COMMUNITY EVENTS

11

11 Participants
Minwanjigedaa Meal Prep
Couchiching First Nation

13

13 Participants
Infant Massage
Couchiching First Nation



CHILD'S FIRST INITIATIVE



CHILD'S FIRST INITIATIVE: GROUP ACTIVITIES



HOME AND COMMUNITY CARE



HOME AND COMMUNITY CARE: HIGHLIGHTS

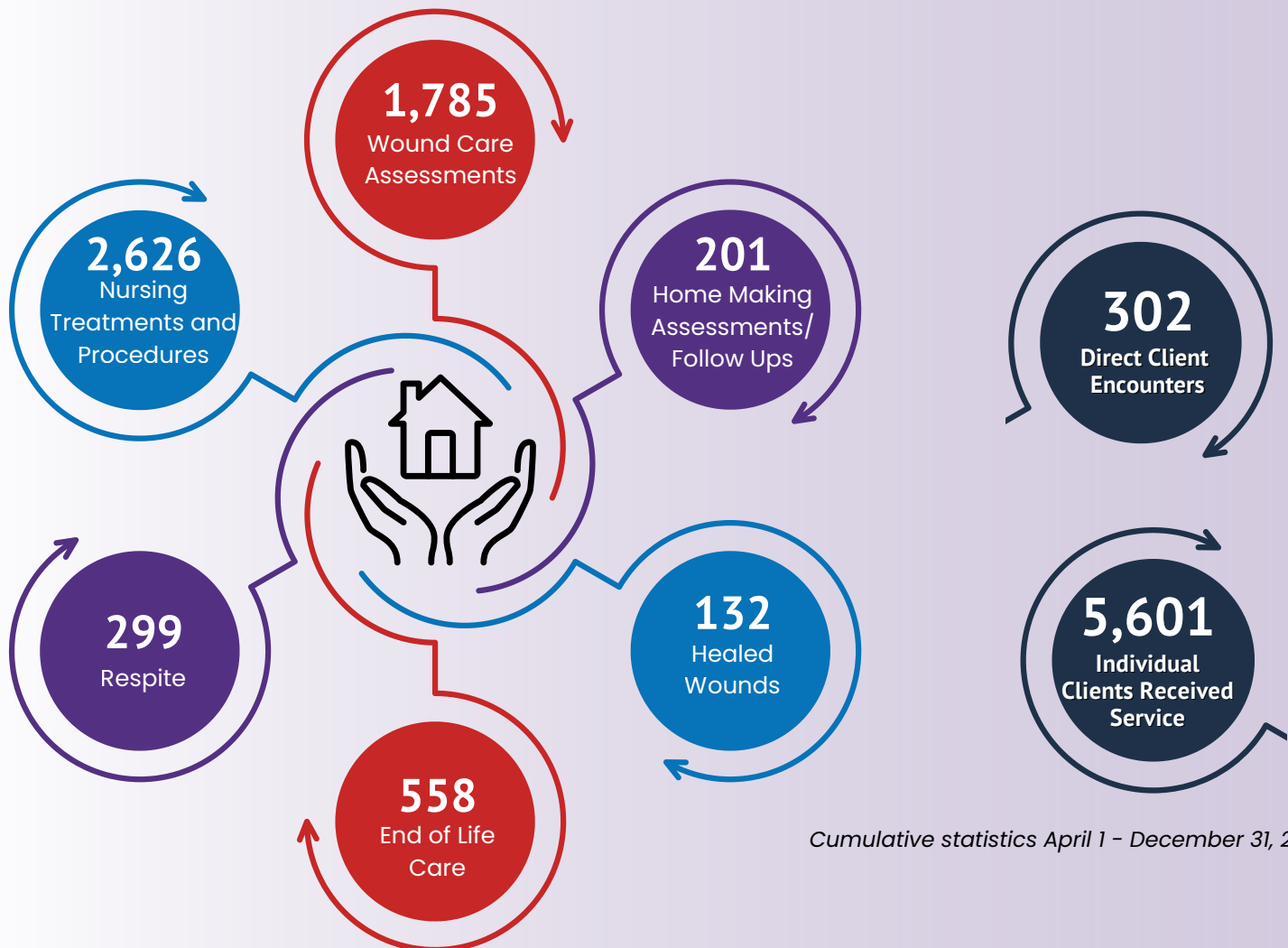


2 of the HCC nurses completed Advanced Wound Debridement training, allowing for increased options for maintenance and treatment of wounds.



Attended the CERAH Aging Across the Lifespan Conference; aimed at increasing networks and sharing knowledge on aging in place, dementia and senior's mental health, Indigenous Peoples' health and aging, and palliative care.

HOME AND COMMUNITY CARE: CLIENT ENCOUNTERS



Cumulative statistics April 1 - December 31, 2025



FOOT CARE & DIABETES: HIGHLIGHTS

FOOT CARE



Provided foot care services to at risk individuals at the National Housing Day Event in November. This event was in collaboration with the HOPE Centre in Fort Frances. Foot care kits were provided; which included socks, risk assessment pamphlet, and education material.

DIABETES



Provided diabetes education services to at risk individuals at the National Housing Day Event in November. This event was in collaboration with the HOPE Centre in Fort Frances.

FOOT CARE & DIABETES: CLIENT ENCOUNTERS

FOOT CARE

1,362 Foot Care Services

250 Debridement

13 Pairs of Shoes Distributed

1,625
Direct Client Encounters

473
Individual Clients Received Service

Cumulative statistics April 1 - December 31, 2025

DIABETES

90 Diabetes Clinics

180 Food Boxes Delivered

715 Diabetes Education Assessments

985
Direct Client Encounters

156
Individual Clients Received Service

Cumulative statistics April 1 - December 31, 2025



WITHDRAWAL MANAGEMENT SERVICES: HIGHLIGHTS AND CLIENT ENCOUNTERS

PROGRAM HIGHLIGHTS

Addictions awareness event 2 communities
 Fall Feast
 Mitten making
 All staff meeting
 Online education

Q3 (Oct 1-Dec 31)

DIRECT ENOUNTERS CONTACT TYPES

Admissions - 86
 Bed Inquiries - 259
 Case Management - 187
 Doctor Assessment - 9
 Telephone Pre Screen - 146
 Sublocade Injection - 7
 Follow Up Bed Offer - 19
 Unavailable Bed - 20
 Correspondance - 14
 Medical assessment - 446
 Medication Management - 817
 Wound Care - 4

2,014

Direct Client Encounters

64

Individuals Received Service

Cumulative statistics April 1 - December 31, 2025

RAPID ACCESS ADDICTION MEDICINE: HIGHLIGHTS AND CLIENT ENCOUNTERS

PROGRAM HIGHLIGHTS

Breakfast program x7
 All staff meeting
 Opioid webinar x2
 Fall ceremony
 Addiction Awareness 2 communities

Q3 (Oct 1-Dec 31)

DIRECT ENOUNTERS CONTACT TYPES

Education
 Medication Management
 RAAM Clinic
 RAAM Follow Up
 Specimen Collection
 Sublocade Injections
 Referrals/Linkages

2,689

Direct Client Encounters

219

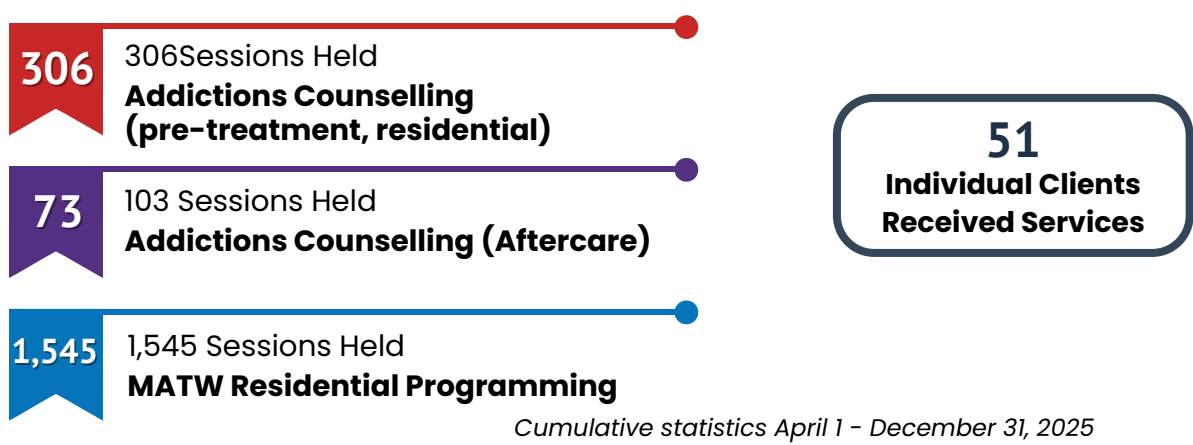
Individuals Received Service

Cumulative statistics April 1 - December 31, 2025

BED-BASED TREATMENT: PROGRAM HIGHLIGHTS

- The second 56 Cycle was delivered during the 3rd quarter, beginning on September 17th and concluding on November 12th
- On December 2nd and 3rd the Public Health team delivered the Safe Food Handling Course to MATW staff, with a 100% pass rate.
- On December 9th, 10th, and 11th, through funding from Indigenous Services Canada, the Crisis and Trauma Research Institute delivered training to MATW staff and NNADAP workers. Topics delivered were: "Decolonizing Your Helping Practice - Weaving Indigenous and Western Healing Approaches"; "Frontline Skills for Social Services"; "Land-Based Wellness – Nurturing Mental and Environmental Health". Elder Andrew Jourdain joined to provide Anishinaabe teaching to the topics.

BED-BASED TREATMENT: CLIENT ENCOUNTERS



BED-BASED TREATMENT: GROUP ACTIVITIES



BED-BASED TREATMENT: COMMUNITY EVENTS





MENTAL HEALTH CLINICAL CASE MANAGER: HIGHLIGHTS

Our Clinical Case Manager continues to support most of the community forums and event booths to display our Mental Health Services programming and to meet with several community members and external resources. This supports collaboration efforts and increases knowledge on both internal and external resources that best support clients accessing our services. Our Clinical Case Manager also supports the Breakfast programs offered at the Shelter of Hope and frequently connects with clients there as well as in our communities. Our Clinical Case Manager also completed trainings during quarter three which included CTRI Solution Focused Therapy and Motivational Interviewing.

MENTAL HEALTH CLINICAL CASE MANAGER: CLIENT ENCOUNTERS



Cumulative statistics April 1 - December 31, 2025

10 10 Participants
Shelter Hope Connection Hub Event
November 20

100 100 Participants
MH OHT Awareness Event
November 3

100 100 Participants
Shelter of Hope Breakfast Buddies Program
4 sessions

75 10 Participants
GCT#3 All Girls Gathering
October 29





MENTAL HEALTH COUNSELLORS & MENTAL HEALTH THERAPIST: HIGHLIGHTS

The Mental Health Services team has **participated in 2 additional psychiatric service educational** sessions during quarter three. The Kenora Rainy River District Health Partners Network provided a virtual education sessions that our Mental Health Services team participated in regarding psychiatric discharge from facilities. These sessions **increase knowledge and awareness of resources**. Dr. Jack Haggarty also visited the team for **consultation and education on how A.I. (Artificial Intelligence) is impacting our clinical work and psychiatry services**. The Mental Health Services team **supported the Social Emergencies team for community crisis support 25 times** throughout the quarter as well as support with the Mental Health Direct Line a total of 22 days.

MENTAL HEALTH COUNSELLORS & MENTAL HEALTH THERAPIST: CLIENT ENCOUNTERS



Cumulative statistics April 1 - December 31, 2025

MENTAL HEALTH COUNSELLORS & MENTAL HEALTH THERAPIST: GROUP ACTIVITIES



MENTAL HEALTH COUNSELLORS & MENTAL HEALTH THERAPIST: COMMUNITY EVENTS





CULTURAL COMMUNITY SUPPORT: HIGHLIGHTS



Our Cultural Community Support program **provided a total of 19 sweatlodge ceremonies** during quarter three and supported several community and agency based drumming events. With a total of nearly 596 people in attendance at our sweatlodge ceremonies alone in the quarter; the program has grown substantially with much higher participation than years prior. The addition of the Shkaabewiz (firekeeper) continues to be a tremendous asset to the program. We have also recently **started utilizing the Anishinabemowin name for our Wiidokaazo previously known as our Cultural Community Support Worker position.**

CULTURAL COMMUNITY SUPPORT: CLIENT ENCOUNTERS

120

Face to Face

35

Phone

30

Crisis Reponse

185

Direct Client Encounters

31

Individual Clients Received Service

Cumulative statistics April 1 - December 31, 2025

CULTURAL COMMUNITY SUPPORT: GROUP ACTIVITIES

154

**Sweatlodge Ceremony
Community Based**
Various Communities & Dates

500

**Remembrance Day PowWow
Veterans Day Service**
FFHS
Nov 11

400

**Chiefs Assembly Drumming
GCT#3**
Oct 1-2

80

**Drumming for National
Addictions Awareness Event**
Nov 24

300

**Drumming for Fall Harvest
Manidoo Baa Witi Gong**
Oct 7-8

100

**OHT Community Awareness Event
Guest Speaker & Drumming**
Nov 3

150

**Remembrance Day PowWow
Couchiching**
Nov 11

1,684

Participants in Group Activities



CULTURAL COMMUNITY SUPPORT: COMMUNITY EVENTS

24

Men's Drumming x3

239

Sweatlodge Open Ceremony x6

356

Sweatlodge Special Request Ceremony x13

25

Shkaabewiz Support with MATW Sweatlodge

45

Pipe Ceremonies

689

Participants in Community Events



SOCIAL EMERGENCIES



MENTAL WELLNESS WORKERS: HIGHLIGHTS



Couchiching First Nation Prevention Team manager met with the program to **request a series of “lunch and learn” presentations to the staff regarding self-care, team building, and building team capacity** around social issues in the community.



The Program completed a series of **“Nishmas Challenges” on Facebook to promote community spirit and togetherness** and provide another way to engage with workers from the program in a unique way. Workers did the draws via video posted to Facebook and winners were able to attend the office for prizes. The online community has come to expect this annual tradition and workers and clients alike enjoyed the weekly challenges.

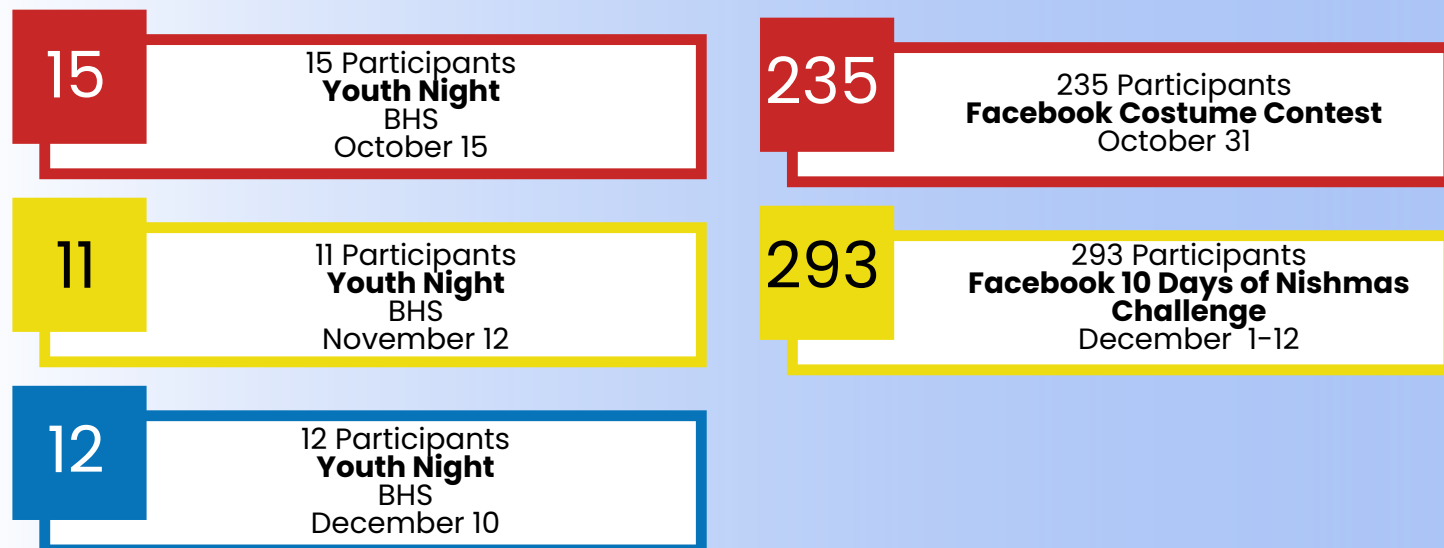
MENTAL WELLNESS WORKERS: CLIENT ENCOUNTERS



Cumulative statistics April 1 - December 31, 2025

MENTAL WELLNESS WORKERS: GROUP ACTIVITIES

MENTAL WELLNESS ACTIVITIES SUPPORT



SOCIAL EMERGENCIES



MENTAL WELLNESS WORKERS: COMMUNITY EVENTS

OUTREACH EVENTS

54

Lunch & Learn
FFHS
6 Sessions

2,000

McTavish Trail of
Terror
October 29-30

2,000

McTavish Winter
Wonderland Trail of
Lights
December 9-10



MENTAL WELLNESS WORKERS: COMMUNITY EVENTS

COMMUNITY WELLNESS EVENTS

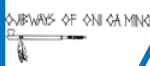
19

19 Participants
Wellness Check Ins x4



14

14 participants
Wellness Check Ins x 3



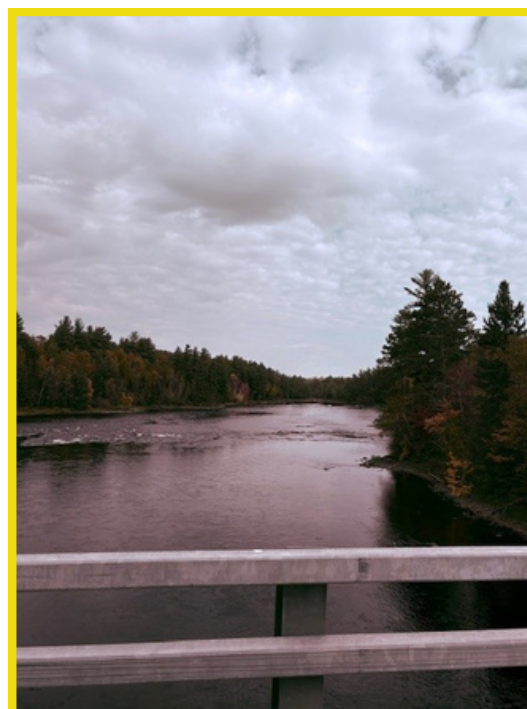
100

100 participants
Mental Health Humbolt
Presentation
November 3



31

31 participants
National Housing Day
November 20





MOBILE CRISIS RESPONSE: HIGHLIGHTS

This quarter, the Mobile Crisis Response Program participated in a number of community engagement activities:

- Fort Frances Santa Clause Parade
- Stuff a Cruiser for Food Bank
- Flag Raising Ceremony: Remembrance Day
- Naicatchewenin Christmas Lights/Parade
- Naicatchewenin Halloween Trunk or Treat



MOBILE CRISIS RESPONSE: CLIENT ENCOUNTERS

342 Face to Face

4 Community Crisis

244 Virtual (Phone & Video/Email)

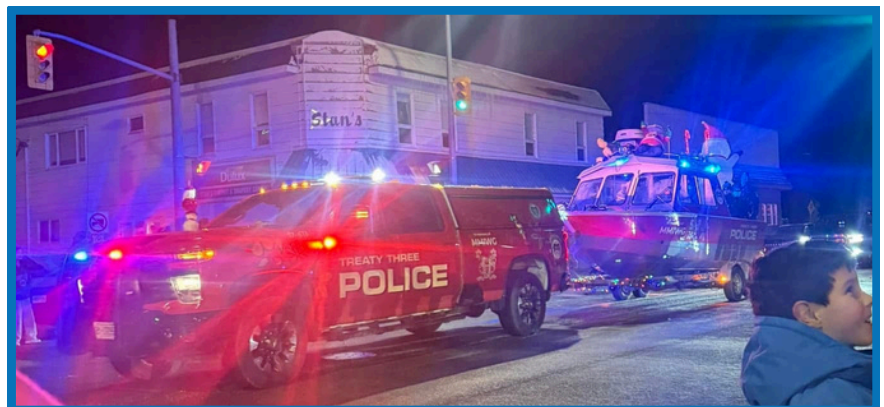
590

Direct Client Encounters

160

Individual Clients Received Service

Cumulative statistics April 1 - December 31, 2025



SOCIAL EMERGENCIES



TRAINING & DEVELOPMENT COORDINATOR: HIGHLIGHTS



Naicatchewenin & RRFN Fall Harvests: This quarter the Training Coordinator assisted RRFN Fall Harvest by running the Wild Rice Station. This was a **two day event that had students and community members attend** from Donald Young School, Sturgeon Creek School & Nestor Falls School. Training Coordinator **also assisted with Naicatchewenin Fall Harvest** which invited community members and Crossroads School Students to explore a variety of harvesting skills.



During this quarter, a priority has been placed on **training our Training & Development Coordinator to be able to provide: ASIST** (Applied Suicide Skills Intervention Training).



SOCIAL EMERGENCIES



TRAINING & DEVELOPMENT COORDINATOR: COMMUNITY EVENTS



TRAINING & DEVELOPMENT COORDINATOR: GROUP ACTIVITIES

EMPLOYEE PROFESSIONAL DEVELOPMENT



SOCIAL EMERGENCIES



SOCIAL EMERGENCIES COORDINATOR (SEC): HIGHLIGHTS

- The Social Emergencies Coordinator leads the co-development of a capacity-building program in partnership with Anishinaabeg Communities, focused on preparing for, responding to, and mitigating health and social emergencies through culturally grounded and community-driven strategies
- The program has experienced a vacancy in employee coverage; however, operational support has been maintained through the Social Emergencies and Mental Health Program.
- Recruitment is currently underway, with the goal of filling the position by Quarter 4.

SEC: COMMUNITY EVENTS

COMMUNITY SOCIAL EMERGENCY PREVENTION

22 Breakfast Buddies Outreach

October 8
HOPE Centre

26 Breakfast Buddies Outreach

November 17
HOPE Centre

26 Breakfast Buddies Outreach

October 24
HOPE Centre

24 Breakfast Buddies Outreach

November 26
HOPE Centre

SEC: COMMUNITY EVENTS

COMMUNITY SOCIAL EMERGENCY RESPONSE



**Community
Crisis Response**
11 Days



**Community
Crisis Response**
17 Days

SEC: COMMUNITY EVENTS

COMMUNITY SOCIAL EMERGENCY RECOVERY



**Community
Funeral/Wake
Support**



**Community Crisis
Follow-Up Debrief
(Individual) x13**



**Community Debrief
Event x2**



**Community Crisis
Follow-Up Debrief
(Individual) x24**

SEC: COMMUNITY EVENTS

PROGRAM AWARENESS

The Social Emergencies Coordinator attended two Inter-Agency Networking Meetings.

SOCIAL EMERGENCIES



LAND BASED COUNSELLORS: HIGHLIGHTS



This quarter we got to sit with an Elder to **learn about rattles and how to make them for the purpose of Sweatlodge use or personal ceremonial use.** The ceremony preparations before starting/after and acknowledging the hide and grandfathers we use to make the rattle. Highlight is to have one we can use in programming and in the Sweatlodge for cultural support.



This quarter the Land Based Program has **created space for individuals to learn different beading styles and projects** such as beaded earrings, medallions, Christmas earrings and beaded regalia cuffs. Which enhances their spiritual grounding and overall wellbeing by **reconnecting to their roots through crafting.**



Through **cleansing cedar bath ceremonies** we continue to offer this support for clients to **reconnect and become balanced in their mental, emotional, spiritual and physical wellbeing.** This also creates connections for clients with elders and knowledge keepers.



LAND BASED COUNSELLORS: CLIENT ENCOUNTERS

55

Face to Face

70

Crisis Response

46

Community Outreach

171

Direct Client Encounters



Cumulative statistics April 1 - December 31, 2025

SOCIAL EMERGENCIES



LAND BASED COUNSELLORS: GROUP ACTIVITIES

14

14 Participants
Out on the Land x10

42

42 Participants
Fort Frances Lunch & Learn

45

45 Participants
Outreach School Wellness x2

36

36 Participants
Residential Treatment Program Land Based Support x4

46

46 Participants
Evening Beading Circle

23

23 Participants
Residential Treatment Sweatlodge Ceremony x3

18

18 Participants
Pipe Ceremony with Elders

54

54 Participants
Community Crisis/Cultural Support

14

14 Participants
Manoomin Teachings

152

152 Participants
Open Sweat - Cultural Support

40

40 Participants
Women's Hand Drumming

503

Participants in Group Activities

19

19 Participants
Community Transition Outreach: Nelson House x2

SOCIAL EMERGENCIES



LAND BASED COUNSELLORS: COMMUNITY EVENTS

26

26 Participants
**Full Moon Ceremony &
Sweatlodge x3**
BHS

16

16 Participants
Cedar Bath Ceremony x2
Mitaanjigamiing First Nation

16

16 Participants
Women & Girls Sweatlodge
BHS

12

12 Participants
Youth Sweat
BHS

5

5 Participants
Rattle Making
Chima'aganing First Nation

8

8 Participants
Ice Safety
BHS

15

15 Participants
Cedar Bath Ceremony x2
BHS

47

47 Participants
Mental Health Support
Onigaming School

145

**Participants in
Community Events**





MEMENGWAAWAG ANTI-HUMAN TRAFFICKING: HIGHLIGHTS

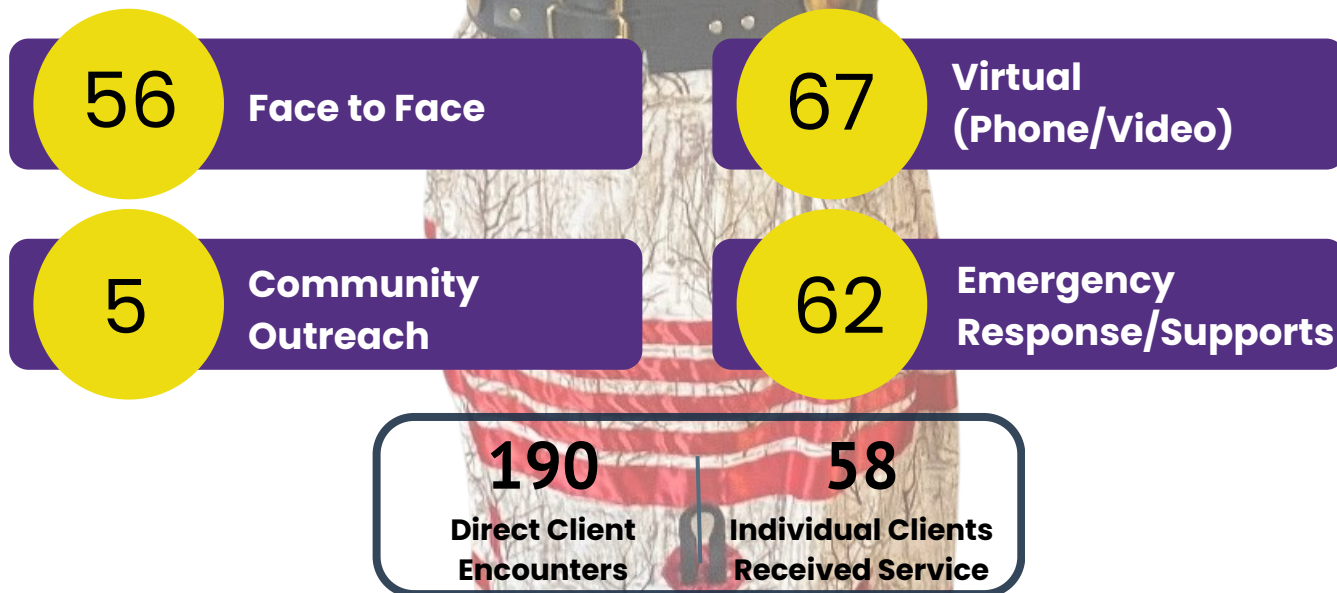


During this reporting quarter, the Memengwaaweg Worker position remained vacant. In the interim, the Social Emergencies Program provided ongoing support to direct service clients to ensure continuity of care.



As part of a program restructuring initiative, recruitment is currently underway to fill two Memengwaaweg Worker positions. One additional position was created to strengthen service delivery for direct service users and to enhance program capacity in providing awareness, education, and youth-focused supports.

MEMENGWAAWAG ANTI-HUMAN TRAFFICKING: CLIENT ENCOUNTERS



Cumulative statistics April 1 - December 31, 2025

MEMENGWAAWAG ANTI-HUMAN TRAFFICKING: GROUP ACTIVITIES

8 Anti-Human Trafficking Outreach x2



LOCATIONS & HOURS

 (807) 274-2042

Administration

1458 Idylwild Drive
Mon. to Thurs. 8:00am–4:00pm
Fri. 8:00am–3:30pm

Child's First Initiative

780 Kings Hwy
Mon. to Thurs. 8:00am–4:00pm
Fri. 8:00am–3:30pm

Behavioural Health Services

601 Kings Highway
Mon. to Thurs. 8:30am–4:30pm
Fri. 8:30am–4:00pm

Human Resources

540 Kings Hwy (Unit B)
Mon. to Thurs. 8:00am–4:00pm
Friday 8:00am–3:30pm

Maternal Child Health

375 Scott Street
Mon. to Thurs. 8:00am–4:00pm
Fri. 8:00am–3:30pm

Mino Aya Ta Win Healing Centre

Fire#1107 Highway 11
Mishkiki Miikaan Road
Mon. to Fri. 8:00am–4:00pm

Home & Community Care

300 Sinclair St
Mon. to Thurs. 8:00am–4:00pm
Fri. 8:00am–3:30pm

Children's Oral Health Initiative

375 Scott Street
Mon. to Thurs. 8:00am–4:00pm
Friday 8:00am–3:30pm

Diabetes & Foot Care

540 Kings Hwy (Unit D)
Mon. to Thurs. 8:00am–4:00pm
Friday 8:00am–3:30pm

Public Health

540 Kings Hwy (Units E & F)
Mon. to Thurs. 8:00am–4:00pm
Friday 8:00am–3:30pm



To find our **Quarterly Service Report and more** on our website,
www.fftahs.com scan the QR Code.

To request a copy of the QSR by mail or e-mail, please call
(807) 274-2042, press 0.



REFERRALS OR INQUIRE

To make a referral or to further inquire about any of the
Giishkaandago'ikwe Health Services programs or
services, please contact:

Mino Aya Ta Win Healing Centre

Telephone: (807) 274-7373

Mental Health & Cultural and Community Supports

Telephone: (807) 274-2042



GIISHKAANDAGO'IKWE
HEALTH SERVICES