



Te Paatu ki Kauhanga Trust

Rau rangatira mā tēna koutou katoa. Tēna koutou i ō tātou tini mate kua huri ki tua o te ārai. Nā koutou i tangi, nā mātou anō i tangi. E ngā mate haere atū ki te kāinga tūturu mo tātou te tangata.

Nei rā te mihi nui. Te manako nui e ora pai ana te noho a o tātou whānau ki roto i ngā wā kāinga.

He nui ngā kaupapa kei mua tonu i te aroaro i tēnei tau. He tawhiti kē tō tātou haerenga kia kore e haere tonu. He nui rawa o tātou mahi, kia kaua tātou e mahi nui tonu.

Kia kaha tātou, kia māia!

Nau mai haere mai to our whānau who have recently enrolled with Te Paatu ki Kauhanga Trust.

A brief reminder that our AGM and first Hui a hapu will be held tomorrow at Kauhanga Marae beginning at 10am.

Nau mai, haere mai, piki mai.

In this newsletter:

Claims Update

SH1 Mangamuka
Gorge Update

Manawa Ora
SEEC and
COVID update

Kauhanga
Marae
Fundraiser



Te Paatu CFRT Claimant Group

We take this opportunity to welcome Sharleen Houghton and Robert Gabel as members of our claimant group.

Shar is a co-claimant for Wai 1670 alongside Emily Latimer and lives in Kaitaia. Robert is claimant for Wai 1668 and Wai 1886.

The members of our claimant group are:

1. Trevor Wi Kaitaia
2. Susan Peters
3. Ngaire Tauhara-White
4. Waha Tauhara
5. Atihana Moana Johns
6. Tina Latimer Wai
7. Leah Marie Wright Wai
8. Tarewa Rota
9. Emily Latimer
10. Shar Houghton
11. Robert Gabel

Our claimant group continue to meet every month to discuss any updates in relation to the Wai 45 Renewed Muriwhenua Inquiry.



Monthly Land and Takutai Subcommittee Update

- Last month the Crown Forestry Rental Trust considered our funding request for post-1930s research for the Wai 45 Inquiry. The application was made in response to Memorandum-Directions Wai 45 #2.922 dated 26 January 2024 and supported by Te Runanga a Iwi o Ngāti Kahu. We will need to see how the Tribunal moves forward with commissioning this research. The funding request has been declined by Crown Forestry Rental Trust.
- Sunrise Archaeology have worked a total of 505 hours on our wāhi tapu project, undertaking field visits and writing up archaeological reports.



- Thanks to all our whānau who have been involved in interviews and taken the time to share stories of life and growing up around our places of significance. Thanks to Auntie Ruth, Trevor, Ngaire, Leah, Sandy, Atihana,
- 18 March 2024, Judge Wainwright commissioned contract historians Heather Bassett and Suzanne Woodley to prepare Muriwhenua Post-1865 Block Narratives – Report One and Report Two, for the Renewed Muriwhenua Land Inquiry (Wai 45, #2.925 and #2.926).
- On Tuesday 18 June 2024, from 10am – 11:30am, Tribunal staff will hold a research hui online for claimants and their counsel to be introduced to the researchers, receive updates on the progress of their research reports, and to ask any questions relating to the reports.
- Over the next few weeks our claimants and counsel will be reviewing the Draft Te Paatu Wāhi Tapu and Portable Tāonga Report.

Special thanks to our Research Team for their invaluable contributions to our research projects.

James Eruera
Cultural Advisor

Ben Leonard
Historian

Justin and Jennifer
Archaeologists

Ardmore Research
Research Project Assistance

David Armstrong
Historian, Peer Reviewer

- Once the Wāhi Tapu Report has been finalised we look forward to continuing the research for our Te Paatu Tribal Landscape project with the support of James Eruera and Ben Leonard.





SH 1 Mangamuka Gorge slip repairs - May 2024 update



Slip A6 – Night works drilling piles in preparation for the day team to install the reinforcing cages.

As the dry autumn rolls into winter, we are making the most of it by running 3 shifts day and night.

While all of the work across the gorge is continuing at pace, a large part of the focus this month has been around the realignment of State Highway 1 (SH1) at slip A11.

With 3 critical slip repairs now complete, we are working at pace to repair the remaining 12 critical sites. In addition, throughout the gorge we're upgrading the damaged or existing drainage, so it's better equipped to handle future weather events.

Mangamuka Gorge project wins at the Āpōpō Asset Management Excellence Awards

The project has been recognised in the sustainability category at the Āpōpō – Infrastructure Asset Management Professionals Incorporated Awards.

The awards recognise the work the project has undertaken around sustainability, for both the environment and communities we are working in.

Community engagement is crucial, ensuring alignment with local needs and concerns through updates, meetings, and transparent communication.

Environmental preservation is key, given the area's biodiversity and it being classified as an area of outstanding natural landscapes. Beyond construction, the project aims to leave a lasting positive impact on the community and environment.

It was a night of recognition for Te Tai Tokerau with the SH10 Kāeo Bridge upgrade project also recognised in the community category.

Congratulations to both teams and everyone involved with the projects. Part of the project team with the sustainability award at the Āpōpō awards ceremony last week.



From the left: Jeremy McIntyre, Mandeep Ghadiya, Tina Mackay, Kullum McIntyre, Kylie Harris, Paul Nicoll, Kent Thompson.



Slips A1 and A2

All enabling works and permanent casings for the 1050mm diameter piles are complete. Now the piling on A6 is finished, the piling crews will move down to start work on this slip. These are the last slip repairs that require the installation of the larger piles..

Slip A3

Rehabilitation works – complete!
Anchors installed waiting for testing. This will be fully complete at the end of the month.

Slip A4

Rehabilitation works – 6/36 permanent piles complete.

The piling team is maintaining an impressive pace on permanent piling - drilling a pile to the required depth one day, and then installing reinforcing cages and concrete the following.

By coordinating activity like drilling, installing reinforcing cages and concrete deliveries, we are able to meet the demands of the entire site, ensuring there are no interruptions.

With a similar approach to slip A9, bentonite (a special type of clay mix) has been introduced to help stabilise the piles to prevent them from collapsing until the reinforcing cage and concrete has been poured.

As mentioned in a previous newsletter, bentonite works by suspending the particles being drilled to strengthen and stabilise them. It helps stop water getting into a drilled pile by forming a filter on the side of the hole. The product is reusable so once it's been used, it can be taken out, treated and reused.



Slip A6

Rehabilitation works – 50/54 permanent piles complete.

We are continuing to run night and day shifts on A6.

Once the final 4 piles are installed, the crew will mobilise all their machinery, tools, and equipment to slips A1 and A2.

Photo below: Pile cages being installed.



Slip A7 and Slip A8

Site preparation has been completed on slip A7 with the main works programmed once piling on slip A26 is complete at the end of the month.]

Vegetation clearance and site preparation started on 20 May. This included cutting an access track down-slope for the drill to access under the road on slip A8.

Slip A9

Rehabilitation works – 53/53 permanent piles complete.

The steelfixers and capping beam team are at the halfway mark. The capping beam is expected to be complete in mid-June.



Slip A26

Rehabilitation works – 52/72 permanent piles complete.

Progress is going well as the crew has moved to the northern (lower) end of the site, where they are in the process of installing the final 20 beams. Following this, the reinforced concrete panels will be installed and secured for the wall to be completed





Slip A11

Despite the challenging ground conditions, the team has moved over 12,500 cubic metres of material to date.

With several minor weather events over the last month, sediment and erosion controls have been highly effective at both A11 and at the fill site, to prevent any sediment and material from entering waterways.

Despite hold ups from the wet weather, progress remains on programme.

Excavation is well underway.

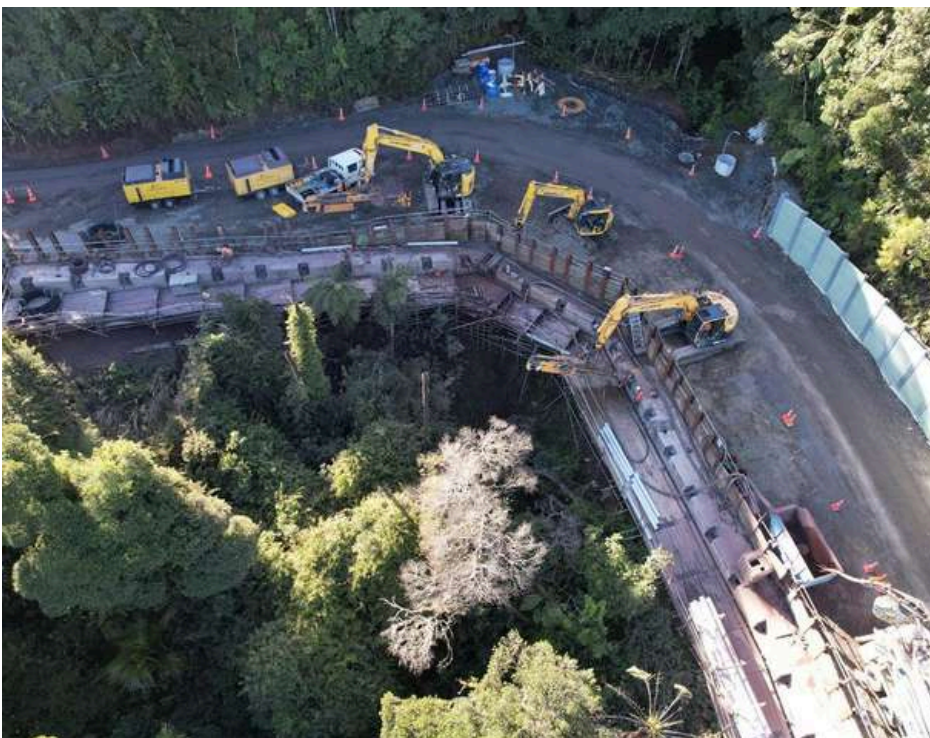
Slip A12

Enabling works – complete.

Rehabilitation works – 38/38 permanent piles complete.

The anchor drilling team is progressing with their work with 2 drill rigs onsite for the anchors to be installed on this slip.

Anchors being installed.



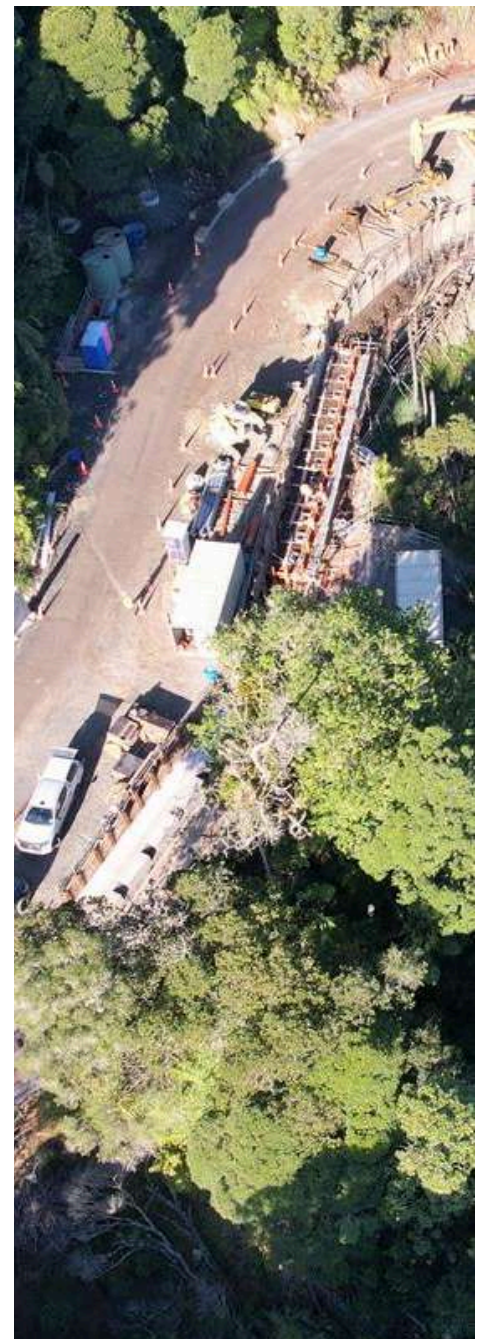
Slip A13

Rehabilitation works – 43/43 permanent piles complete.

Piling is complete. The capping beam is currently being installed with the first of 3 sections being completed.

Once the capping beam is installed, the anchor team will continue from A12 onto A13 to complete all the works in this immediate area.

Completed capping beam at the bottom, installed cage in the middle and the final stage to be completed at the top of the picture.





www.kauhanga.nz | admin@kauhanga.nz | 0800 837 288



Trista Raharuhi continues to work with whānau in the Manawa Ora Healthy Homes Initiative.

The Manawa Ora Healthy Homes Initiative is a FREE service that supports whānau with tamariki to create a warmer, drier, healthier home.

Trista's role is to help identify eligible families and work with them to carry out a comprehensive housing assessment and complete an individualised action plan to create a warmer, drier, healthier home.

Trista can also help whānau to get the interventions they need to create a better living environment, especially for their children.

Interventions given to these families include help with:

- accessing insulation
- curtains
- beds and bedding
- minor repairs
- floor coverings
- ventilation
- heating sources
- Full And Correct Entitlement assessments through Work and Income
- Support with power bills
- finding alternative accommodation as needed.

For more information about Manawa Ora Healthy Homes Initiative, contact:

Trista Raharuhi
phone 027 252 0666
email trista@kauhanga.nz

Support for Energy Education in Communities Programme

The SEEC Programme was established following recommendations to government from the 2019 Electricity Price Review. It complements other initiatives across government, the community and private sector that focus on making homes warmer and more energy efficient.

The SEEC Programme includes funding to build and expand the network of services to support people experiencing energy hardship achieve warmer, more energy-efficient homes and lower their energy bills.


Te Paātu ki Kauhanga Trust applied to the Ministry of Business Innovation and Enterprise for funding in the 2022/2023 to deliver Ahikāroa Energy Wellbeing Packs to support local Māori whānau transition from energy hardship to energy wellbeing.



Our Ahikāroa packs include a range of resources free of charge to whānau including LED lightbulbs, hygrometers, hot water bottles, blankets, door stoppers and information about how to keep your whare warm, drier and healthier.

We look forward to being able to roll out Ahikāroa packs to whānau in the next few weeks.

Te Paātu ki Kauhanga Trust
PO Box 297
Kaitaia 0482

 **0800 TE PAATU**
0800 837 2288

 **admin@kauhanga.nz**

 **www.kauhanga.nz**

COVID-19 Update

As at Monday 27 May 2024 the 7-day rolling average for new Covid infections has increased to 948.

In the last week 6,636 new cases and 39 reinfections were reported.

Only household contacts who develop one or more Covid-19 symptoms are recommended to stay at home and test for the virus. Testing with a RAT is recommended if a person is presenting the following symptoms: a runny nose, sore throat, cough, fever, vomiting, diarrhoea, headache, loss of smell or taste, and/or shortness of breath.

RAT's are available free for collection from Kaitaia Hospital, Monday to Friday between 9am and 4pm. For other collection sites across New Zealand visit the Healthpoint website or call 0800 222 478 option 1.

Our trust continues to provide medical support and help with referrals to other services for food assistance where required.

ENVIRONMENTAL KAITIAKI

Our Environmental Kaitiaki Thomas White continues to attend a range of hui in relation to the Doubtless Bay Catchment Group and local surveys.

Thomas recently commenced riparian planting along the Peria River with 100 pukio plants, 86 cabbage trees and 38 harakeke planted to date!





MATARIKI FUNDRAISER 2024

Tēnā koutou katoa!

Support Kauhanga Marae and celebrate Te Tau Hou Māori in style.

Order MATARIKI and PUANGA clothing for you, your whānau and friends!

KIDS	Sizes:	6, 8, 10, 12
	Tees \$25	Hoodies \$50
ADULTS	Sizes:	S, M, L, XL, 2XL, 3XL
	Tees \$35	Hoodies \$70
	Sizes:	4XL, 5XL
	Tees \$40	Hoodies \$80

Account Details

Bank: ASB

Account Name: Kauhanga Marae

Account Number: 12-3096-0235376-03

Reference: KAKAHU24

*To confirm delivery options or for any other queries,
please email: tepaatu.kauhanga@gmail.com*

Order/Payment Deadline:

Monday, 3rd June 2024 (King's Birthday Holiday)

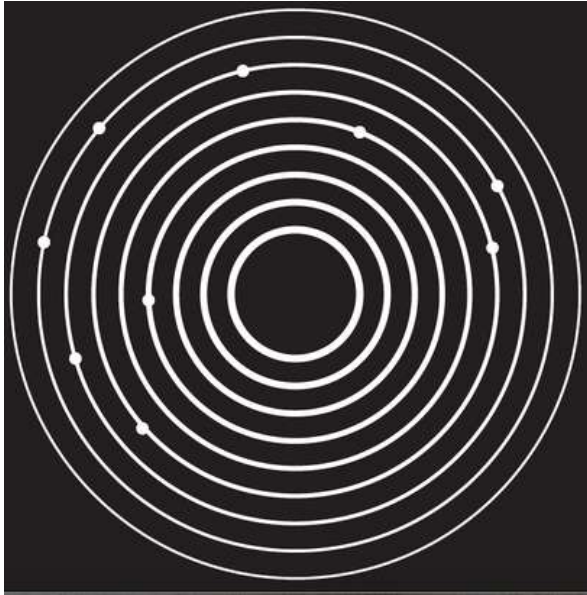
Click [here](#) to place your order



MATARIKI

T-SHIRTS, HOODIES

FRONT



BACK



LOGO



Artist: **Noel Tainui Hilliard**
(Ngāti Kahu, Ngapuhi, Ngāti Raukawa, Ngāti Toa)

KĀKAHU 2024

Click [here](#) to place your order



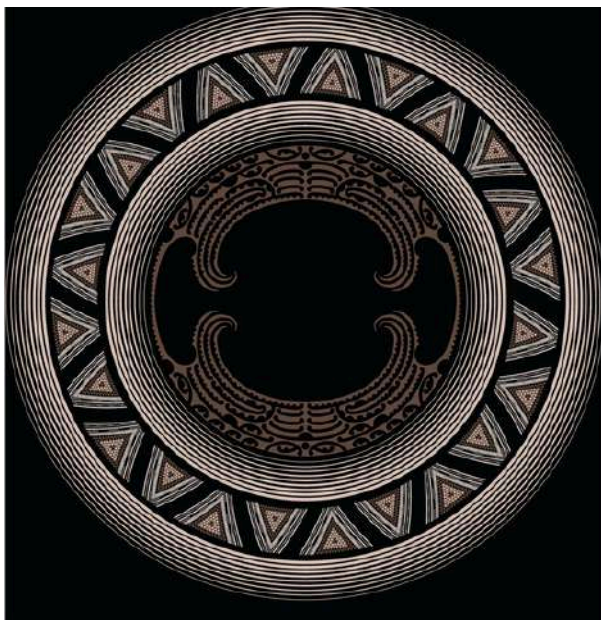
PUANGA

T-SHIRTS, HOODIES

FRONT



BACK



Artist: **Noel Tainui Hilliard**
(Ngāti Kahu, Ngāpuhi, Ngāti Raukawa, Ngāti Toa)

KĀKAHU 2024

Click [here](#) to place your order