

Technical specifications

HiLight

V7+ KH ROW

Frequency: 50 | 60 Hz

Factory: Wux, China



HiLight V7+ for reference

General description

The innovative light tower incorporates state-of-the-art surface mount device (SMD) LED lighting technology to provide excellent performance and efficiency. Operators at construction sites, events, mines, emergency applications and rental companies will be able to reduce their carbon footprint and operating costs while improving sustainability levels, with 20% more Light coverage than COB LED type.

Combining the use of a low-consumption diesel engine, the new HiLight V7+ light tower offers users maximum efficiency setting to make the most of the energy available.

TECHNICAL INFORMATION

Reference conditions		
Absolute inlet pressure	bar	1
Relative humidity	%	30
Air inlet temperature	°C	25
Performance data		
Light Coverage (20 lux avg)	m ²	7.360
Light Coverage (min 1 lux - 75°)	m ²	12.102
Rated Frequency	Hz	50 60
Rated voltage	Vac	230 240
Power output	kW	2,3 2,4
Operating temperature (min/max)*	°C	-25 / +49
Altitude capability	m	3500
Relative air humidity maximum	%	85
Maximum sound power level (LWA)**	db(A)	87 90
Sound pressure level (LpA) at 7 m	db(A)	65 68
Fuel tank capacity	l	98
Oil service interval	h	250
Mast height	m	7,5
Mast type / rotation		Manual / 340°
Wind speed stability***	km/h	80
Fuel consumption at all floodlights ON	l/h	0,81 0,93
Fuel autonomy at all floodlights ON	h	121 105

*Option "Cold weather" might be needed.

**Complies with 2000/14/EC

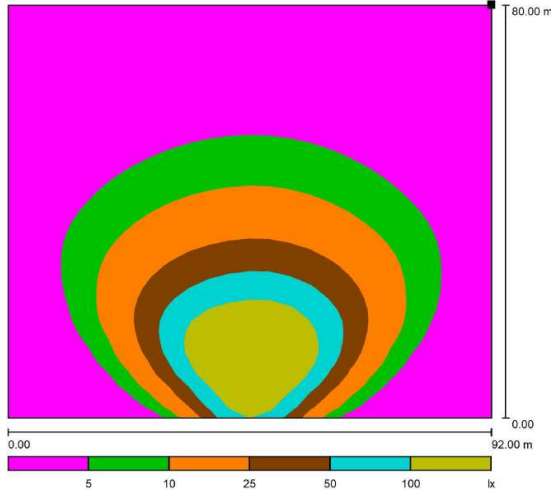
***Consult Atlas Copco for conditions reference.

Atlas Copco will keep the rights to change any data when necessary due to any reason.

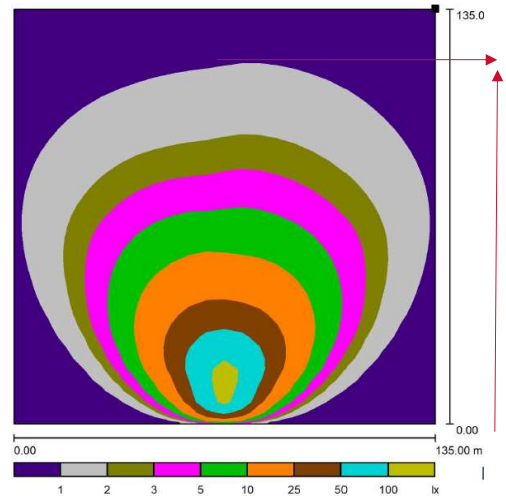
Canopy		
Canopy		HardHat®
Type		Undercarriage
Engine		
Brand and Model		Kohler KDW702
Speed	rpm	1500 1800
Rated net output (PRP)	kW	5 6
Coolant system		Coolant
Aspiration / Combustion system		Natural / Direct Injection
Number of cylinders	Cylinder	2
Speed governor		Mechanical
Capacity of oil sump	l	4,7
Capacity of cooling system	l	1,1
Electrical system	Vdc	12
Emission stage		Stage V
Alternator		
Brand and Model		ACA132BL
Rated output	kVA	3 4
Protection degree		IP23
Insulation class		H
Number of wires	Wires	4

Lamps

Number of lights	Unit	4
Technology		SMD LED
Floodlight power	W	350
Total Lumen	lm	210.000



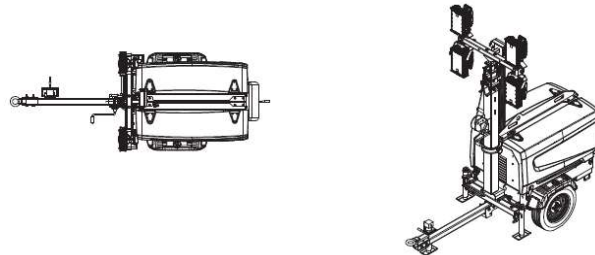
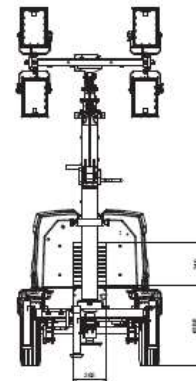
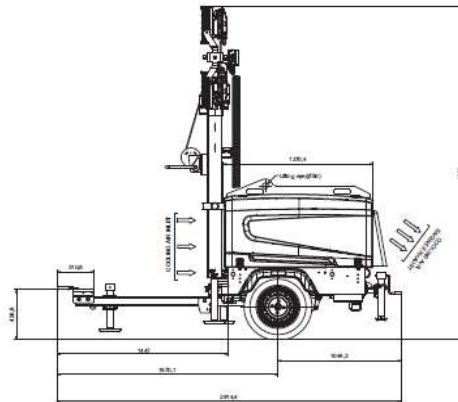
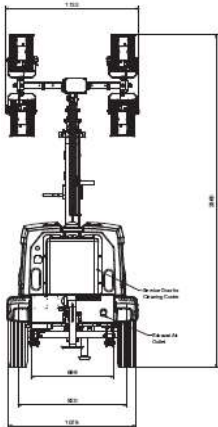
7.360 m² avg 20 lux



12.102 m² min 1 lux

Dimension and weight

Length x Width x Height in transport mode	mm	1892 x 1108 x 2941
Length x Width x Height in operation mode	mm	2904 x 2318 x 7516
Weight (dry / wet)	kg	702 / 796



Mechanical Options
Spark Arrestor
Towing hitch combo
Towing hitch ball coupling 2 inch
Towing hitch ring 2.5 inch
Adjustable towing support
Electrical Options
Cubicle ELCB with universal socket 230V 50Hz 240V 60Hz
Cubicle ELCB without socket
Cubicle with universal socket 230V 50Hz 240V 60Hz
Road light system
E-Stop
Earth pin
Battery isolator
DC E-winch
Lc1003™