

MAN B&W 12V23H

Specifications

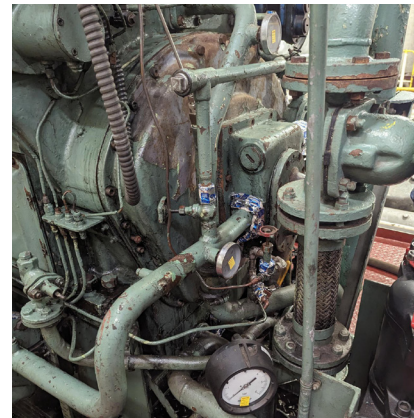
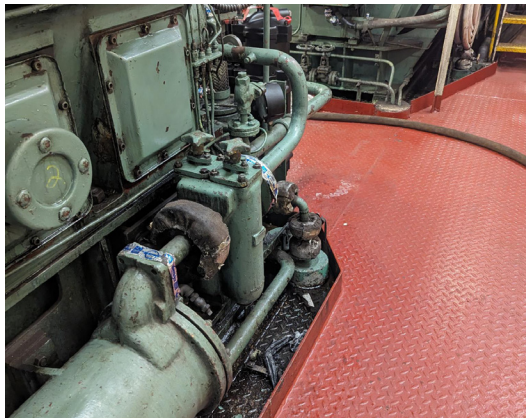
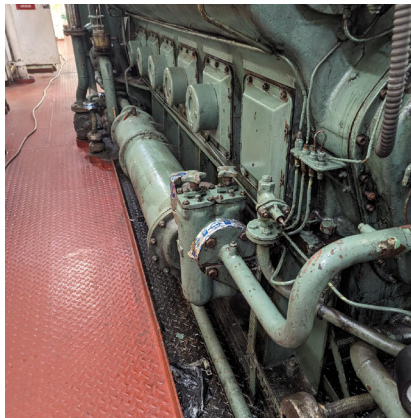
Engine Model
MAN B&W 12V23H

LO Type
SAE 30 Mobilgard 312

Fuel Grade
MGO, 420 litres

Installation

Two IOW Group MP600 centrifugal filters were retrofitted onto two B&W 12V23H engines, paired with a Magnaline 032 pump. These filters are engineered to capture microscopic particles that bypass primary full-flow filters, helping engines run more efficiently and reliably while reducing maintenance and costs. The Magnaline pump range provides leak-free, high-performance operation.



After

