

## Engine: MAN 8L 27/38

### Specifications

Company: MSC

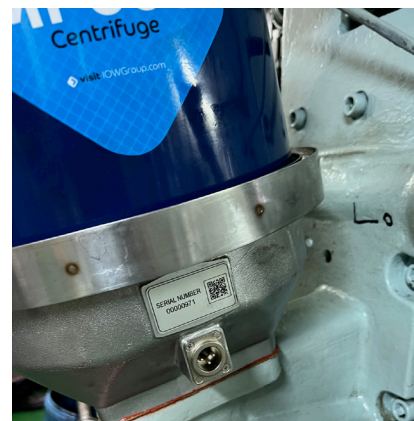
Vessel Names: M/V Shimin

Engine: MAN 8L 27/38, kW 2720 @ 800 rpm

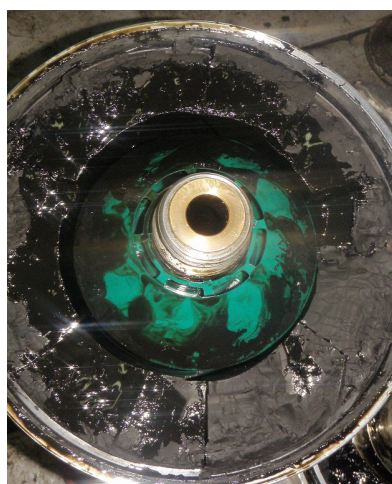
### Installation

Our client undertook a free trial of an IOW Group MP600 centrifugal filter, directly replacing an old FM600 to see if IOW Group's technology can remove more harmful particulate from the engines lubrication oil.

The MP600 operated at 5 bar and had an SCU 0003 installed to monitor the performance of the IOW Group centrifuge.



### Results



- Run time of 270 hours
- Removed 35mm of soot
- 4500rpm
- SCU 0003 notified operator when service was needed and displayed rpm