

MAN B&W 9L21/31

Specifications

Engine Model
MAN B&W 9L21/31

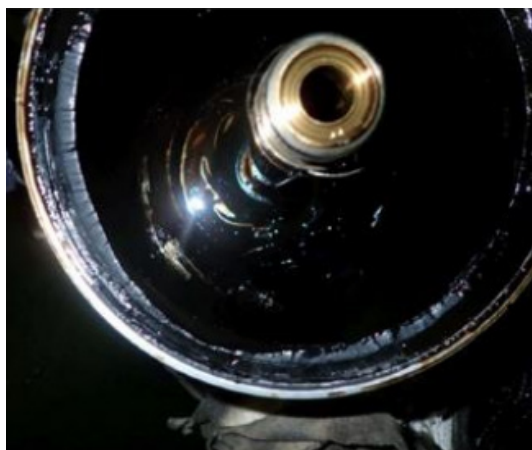
Oil Type
Total Aurelia T1 4030

Fuel
HFO RMK 500

Installation

The client installed an IOW MP600 to replace an outdated FM600 oil separator on Generator Engine No. 3 of the ANL Wyong container vessel. Upgrading to IOW Group's latest centrifugal technology is quick and straightforward thanks to the bolt-off, bolt-on design. The MP600 also features integrated remote monitoring, allowing engineers to track performance in real time and receive service alerts when needed.

Results



Analysis								New Oil	Engine
Appearance					Opaque	Opaque	Opaque		
K Viscosity at 40 °C cSt					144.7	150.4	153.4	140	1 to -1 SAE
K Viscosity at 100 °C cSt					14.5	15.00	15.3	14	
Flash Point °C					>200	>200	>200	>= 230	> 185
Water % Vol					<0.1	<0.1	<0.1		< 0.2%
Soot % wt					<0.1	<0.1	<0.1		< 1.5%
Asphaltenes % Wt						0.39	0.48		
Base Number mKOH/a					17.5	14.6	15.3	30	> 50%

- Sludge Accumulation 3 times higher than existing centrifuge
- 3.5kg removed after 655 hrs. with 560 litre new oil top-up
- Further 3kg removed in the following 186 hours @ >16g/hr. dirt removal
- Lube oil system cartridge filter life increased by up to 60% due to continuous cleaning of sump oil
- Life of generator engine sump oil will increase by 30% to 50%
- Asphaltenes present at between 0.39 - 0.48% wt. which is half the 0.79% of sister vessel.
- All centrifuge parts found in good condition following the trial