

Results

2024



Sound



Maximize your crop's access to nutrients, all season long.

In 2024, the Maximum Acre and Efficient Acre programs, powered by SOURCE® and BLUEPRINT™, delivered consistent yield improvements across a range of crops, maximizing both agronomic performance and grower ROI. These comprehensive solutions optimize nutrient efficiency, enhance plant resilience and drive higher yields across diverse growing conditions. From corn and soybeans to potatoes and sugarbeets, trials demonstrated measurable gains in productivity and economic returns, reinforcing the value of an integrated approach to crop management.

At the core of these programs, SOURCE and BLUEPRINT continued to prove their effectiveness in unlocking plant potential. With win rates exceeding 75% in key crops like corn and soybeans, growers saw meaningful improvements in nutrient uptake, root development and overall yield lift. SOURCE enhances microbial activity to increase nutrient availability, while BLUEPRINT strengthens plant-fungal interactions to expand root access to water and nutrients. Together, they provide a powerful biological foundation for improving plant health and maximizing farm productivity.

We invite you to explore the results in this report to see how these solutions performed across different environments. Whether you're looking to push yield potential, improve nutrient efficiency or enhance plant resilience, the data highlights how SOURCE and BLUEPRINT within the Maximum Acre and Efficient Acre programs drive consistent agronomic and economic returns.

Jeff Divan
Senior Director, Agronomy
Sound Agriculture

Executive Summary 2

CROPS

Corn: Maximum Acre 4

Corn: Efficient Acre 8

Corn: Silage 22

Soybean 28

Cotton 34

Wheat 38

Expansion Crops

Forages 46

Sugarbeet 48

Potato 50

Canola 52

Pulses 54



CORN MAXIMUM ACRE RESULTS



Products

SOURCE DC

BLUEPRINT Liquid

BLUEPRINT Powder

All Time Average

Yield Impact

6-12+ bu

Win Rate

84%

Avg ROI/ac

\$10-30+

The Maximum Acre solution is the ultimate chemistry + biology 1-2 punch, ensuring your crop gets the nutrients it needs all season long. SOURCE + BLUEPRINT work together to unlock and deliver essential nutrition, maximizing your crops' health and yield.

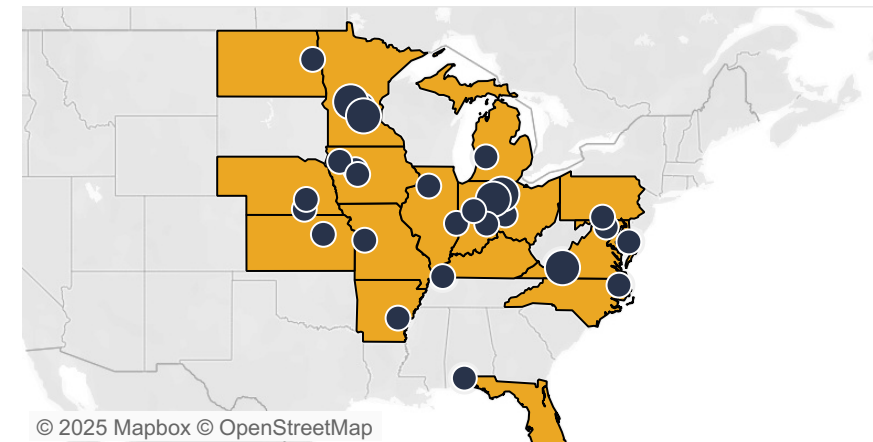
This powerful synergy provides a 6-12+ bu increase with an ultra-consistent 84% win rate. Backed by 32 independent data points from 2024 CRO strip trials, large plot commercial studies and third-party large plot studies, growers are seeing a \$10-\$30 per acre ROI—proof that Maximum Acre is the go-to solution for maximizing yield and profitability.

What is NUE?

A Nutrient Use Efficiency (NUE) score is a way to capture the relationship between how much of a particular nutrient is applied and yield. For NUE, a lower number represents higher efficiency, or a smaller amount of an input like nitrogen fertilizer required per bushel.

$$\text{NUE} = \frac{\text{lbs N}}{\text{bu}}$$

CORN MAXIMUM ACRE Commercial Trials | 2024



© 2025 Mapbox © OpenStreetMap

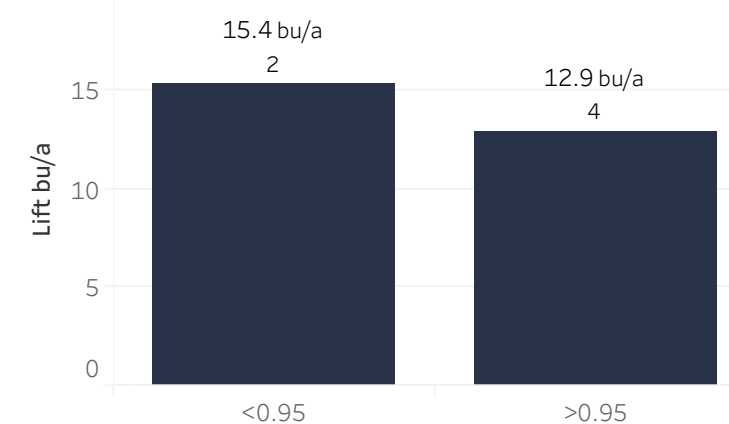
Yield Lift Average

7.4 bu/a

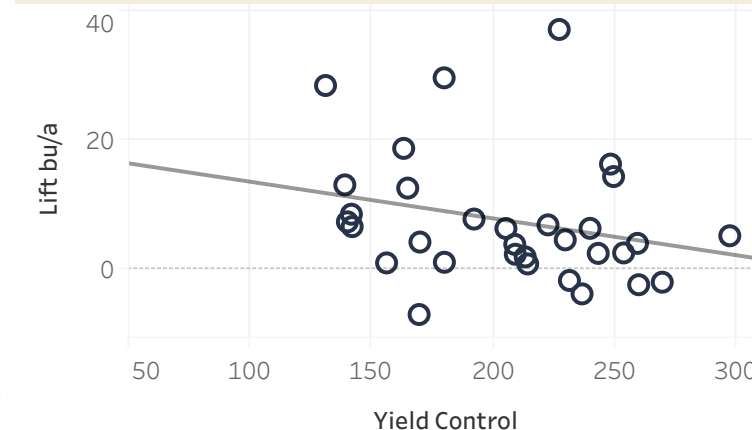
n= 32

Win Rate 84%

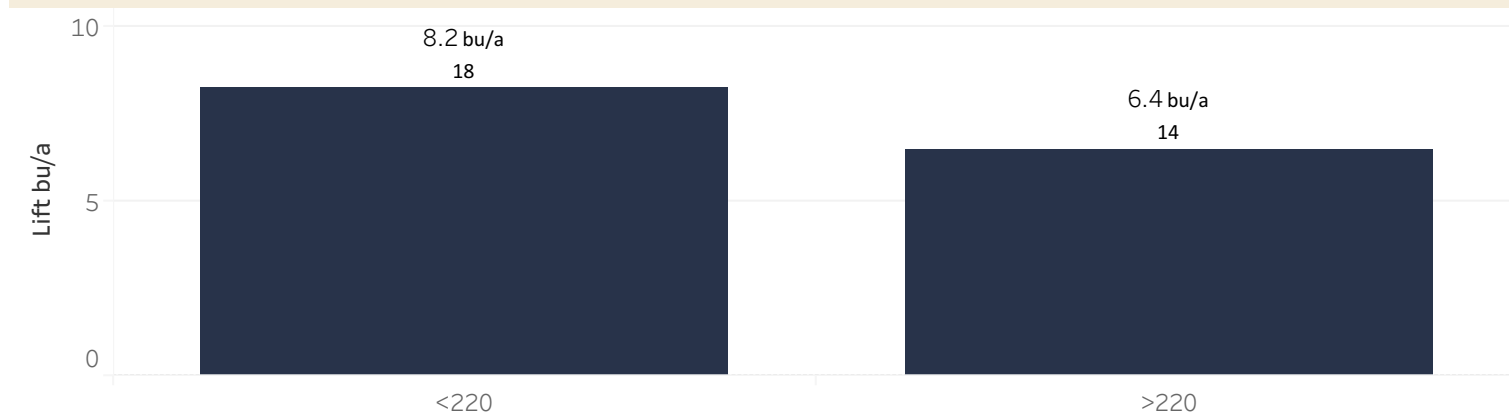
Yield Lift by NUE



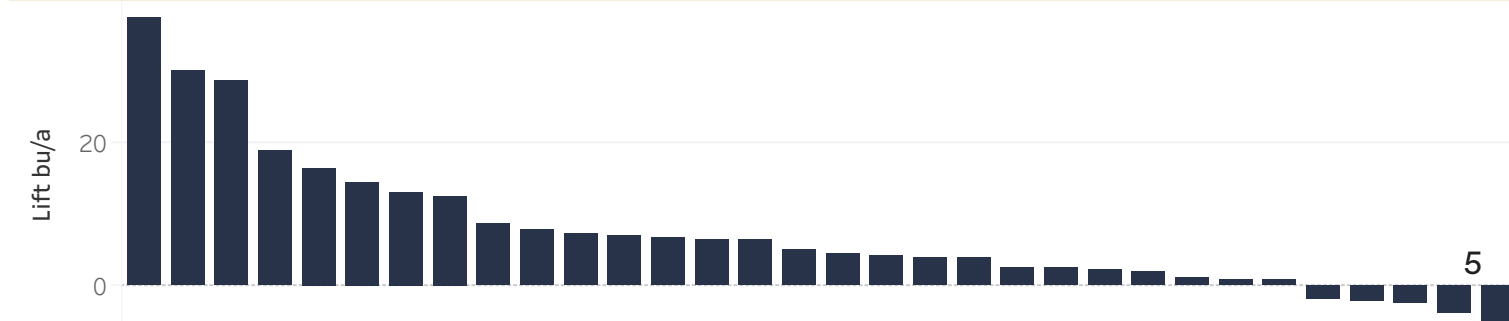
Yield by Yield Environment



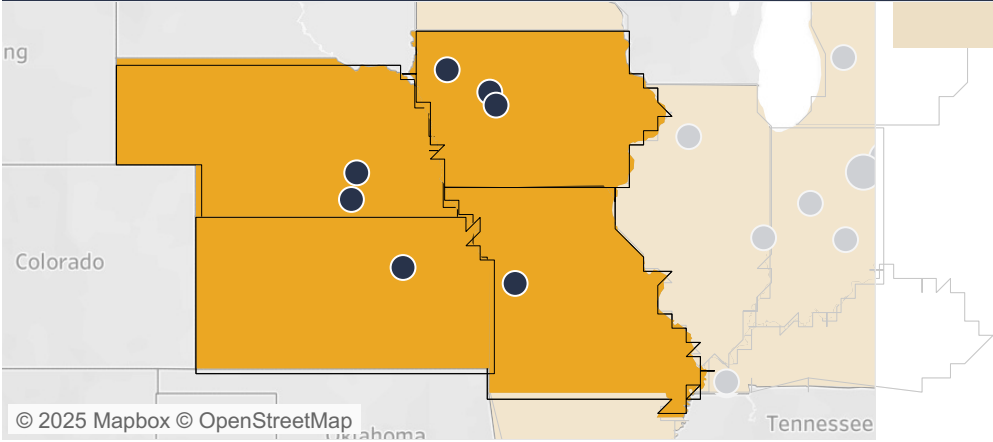
Yield Lift by Yield Environment



All Trials



CORN **MAXIMUM ACRE** FEATURED REGIONS
IA, NE, KS, MO | 2024



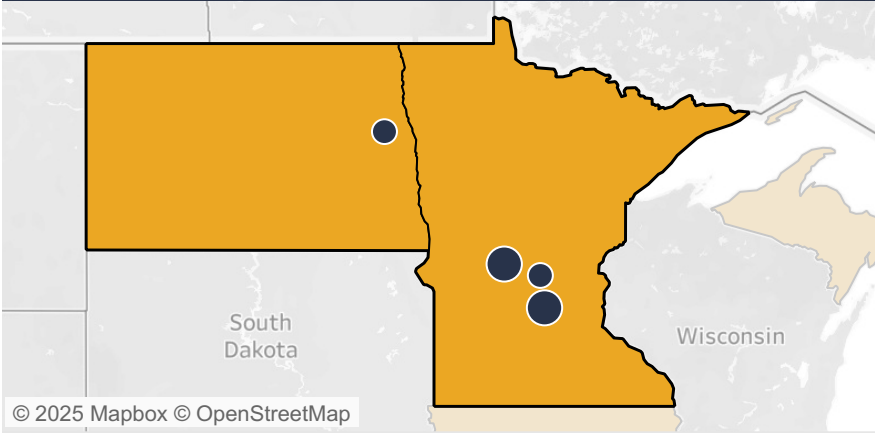
Yield Lift Average

13.3 bu/a

n= 7

Win Rate 83%

MN, ND | 2024



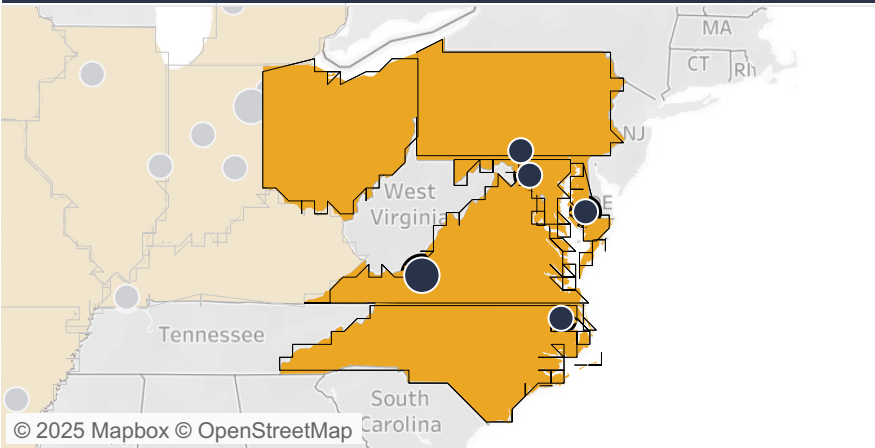
Yield Lift Average

9.2 bu/a

n= 6

Win Rate 83%

OH, PA, MD, DE, VA, NC | 2024



Yield Lift Average

8.8 bu/a

n= 6

CORN **MAXIMUM ACRE** COMPARISON PHOTOS
Commercial Trials | 2024



CORN EFFICIENT ACRE RESULTS

Products

SOURCE DC

N + P Reduction

25 units N+P

ROI / ac

\$40+

N Reduction Only

25 units N

ROI Win Rate

60%

ROI / ac

\$10+

P Reduction Only

25 units P

ROI Win Rate

77%

ROI / ac

\$20+

*ROIs include \$5/ac Efficient Acre incentive.

CORN EFFICIENT ACRE

Nutrient Reduction Commercial Trials | 2021 - 2024

© 2025 Mapbox © OpenStreetMap

ROI by Reduction Type

Reduction Type	ROI (\$/a)	Yield (bu/a)	n
N Reduction	\$5.70/a	0.8 bu/a	n= 65
P Reduction	\$17.34/a	2.0 bu/a	n= 8
N&P Reduction	\$40.36/a	3.7 bu/a	n= 21

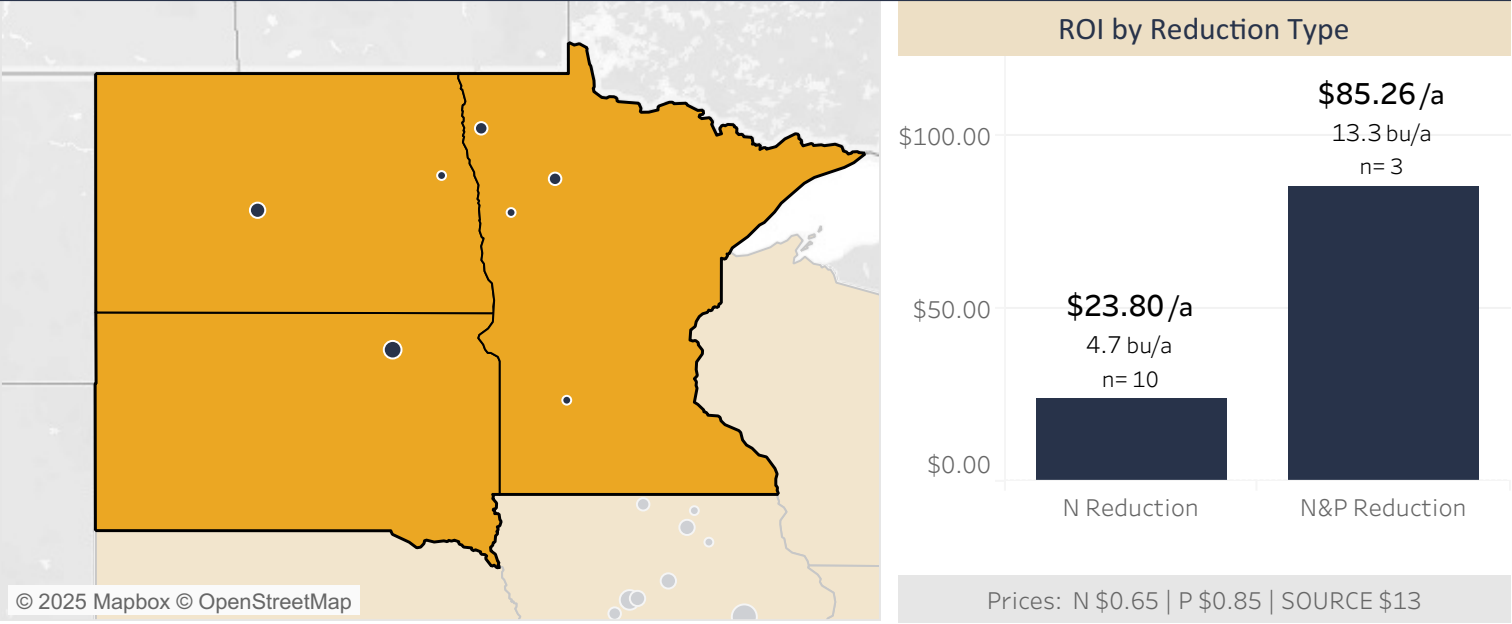
ROI Prices:
N \$0.65 | P \$0.85
Corn \$4.66 | SOURCE \$13

With Sound's Efficient Acre solution, you can take a proactive and more profitable approach to your fertility program and replace synthetic fertilizer with confidence. SOURCE's ability to replace 25 units of N and P without sacrificing yield has been rigorously tested in 121 trials over 4 years from 2021–2024.

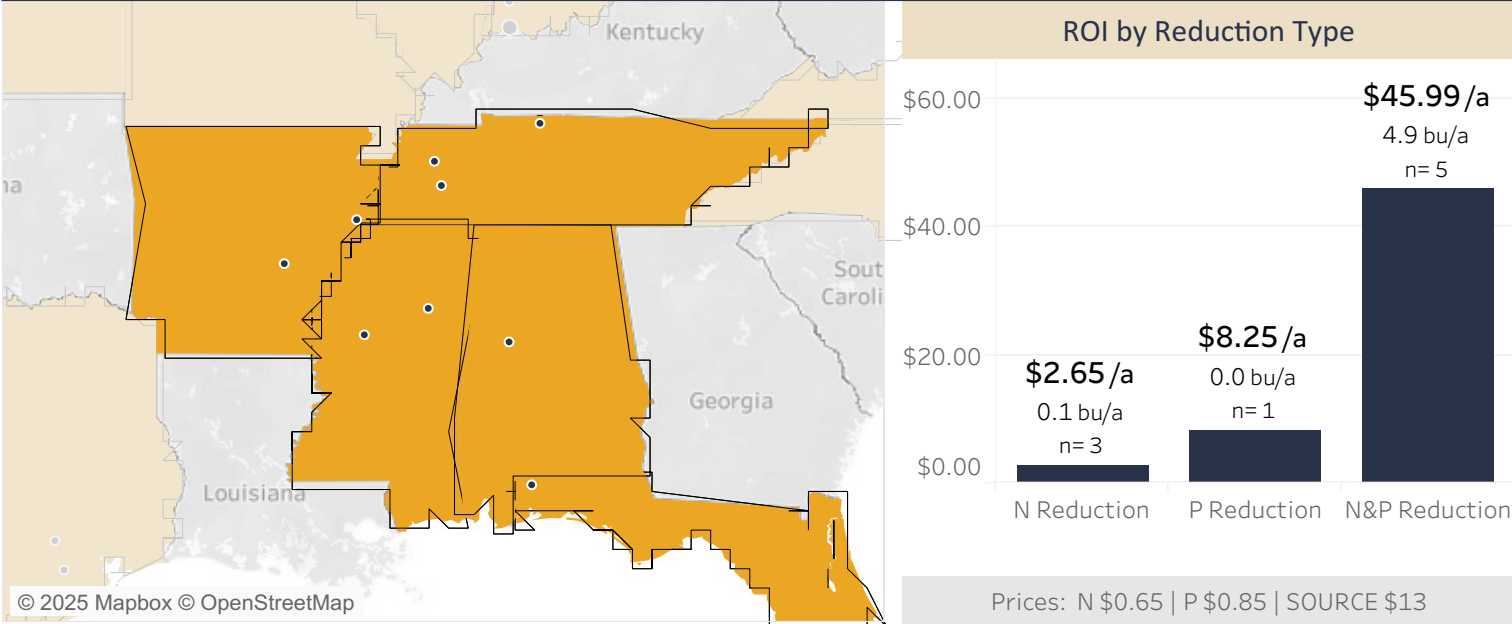
This level of data provides confidence in placement recommendations. Use SOURCE to replace N when the NUE is greater than or equal to 0.9 units of N/bu. Use SOURCE to replace P whenever soil test values are not low: Mehlich 3 ICP: >25 ppm; Olson: >9 ppm; Bray P1: > 15 ppm.

These trials demonstrate the value of using SOURCE as a core part of a fertilizer plan, delivering over \$30 of fertilizer savings with the potential for added bushels in the right environments. Combined with our Efficient Acre incentive of up to \$10/ac, SOURCE helps growers maximize the return on their fertilizer investment without risk.

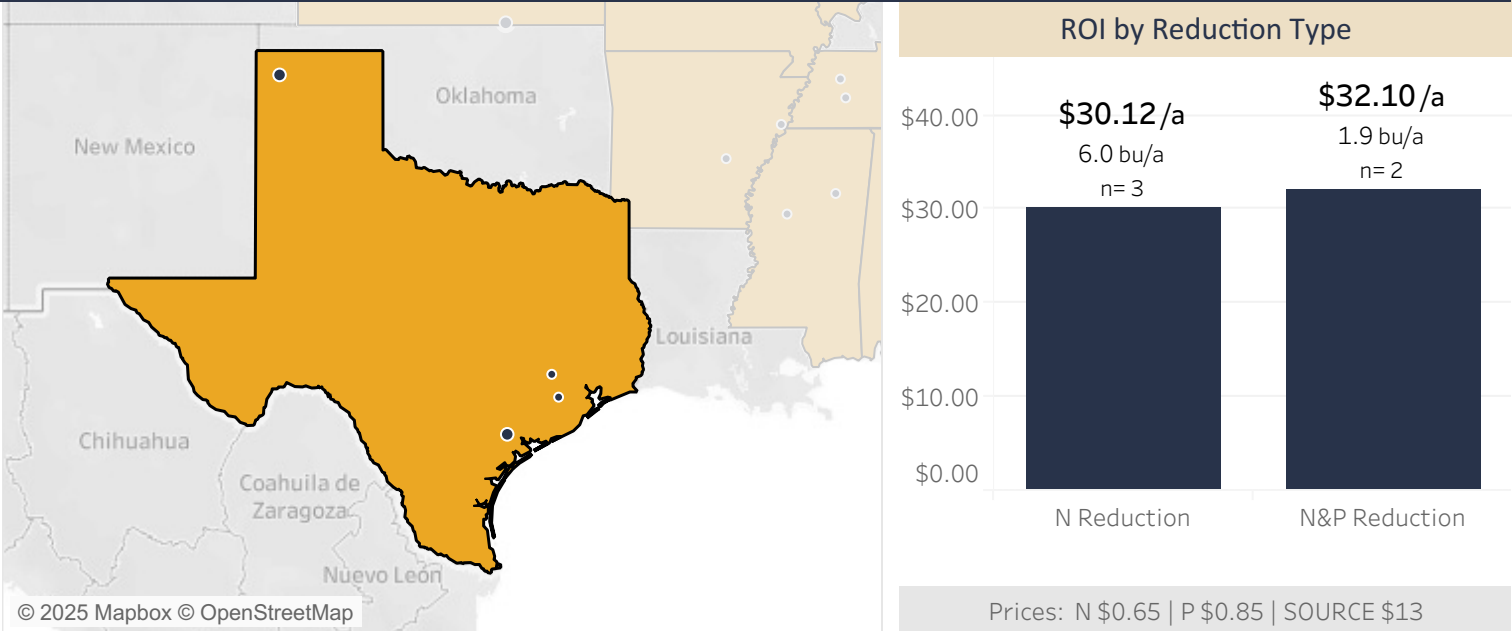
CORN EFFICIENT ACRE FEATURED REGIONS
MN, ND, SD | 2021-2024



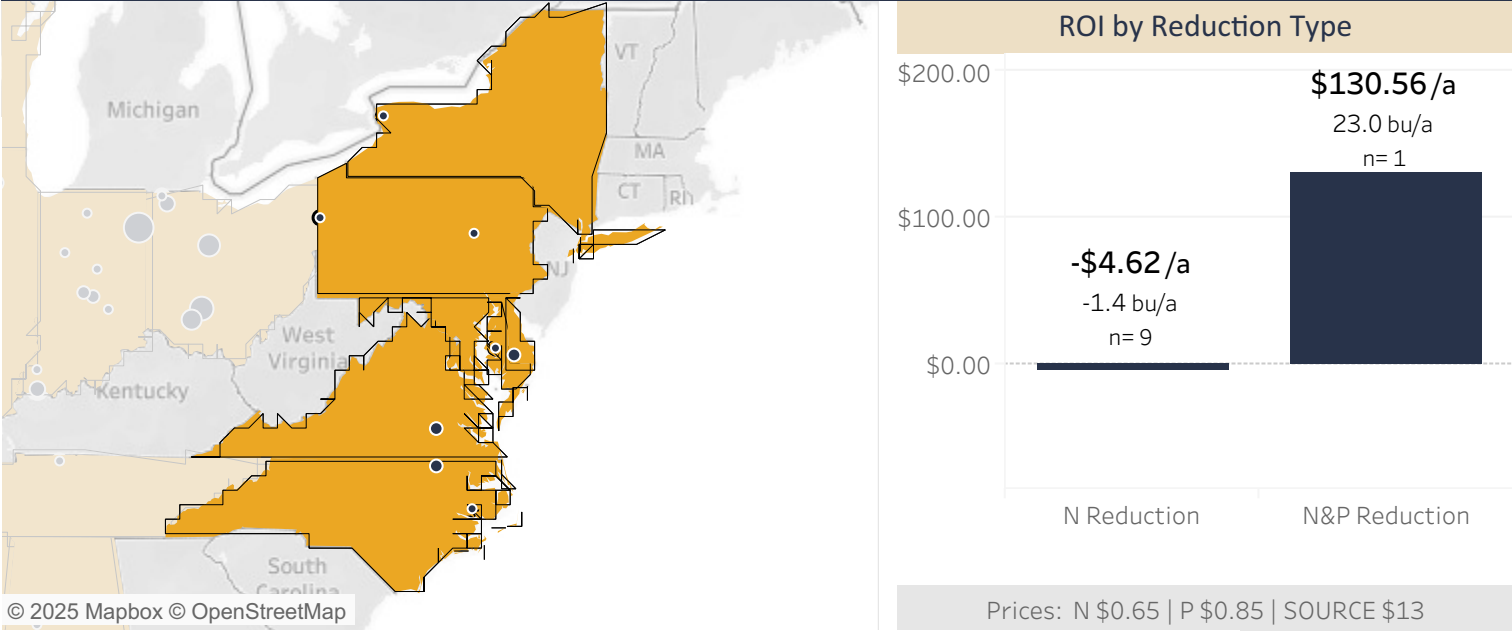
CORN EFFICIENT ACRE FEATURED REGIONS
AR, MS, TN, AL, FL | 2021-2024



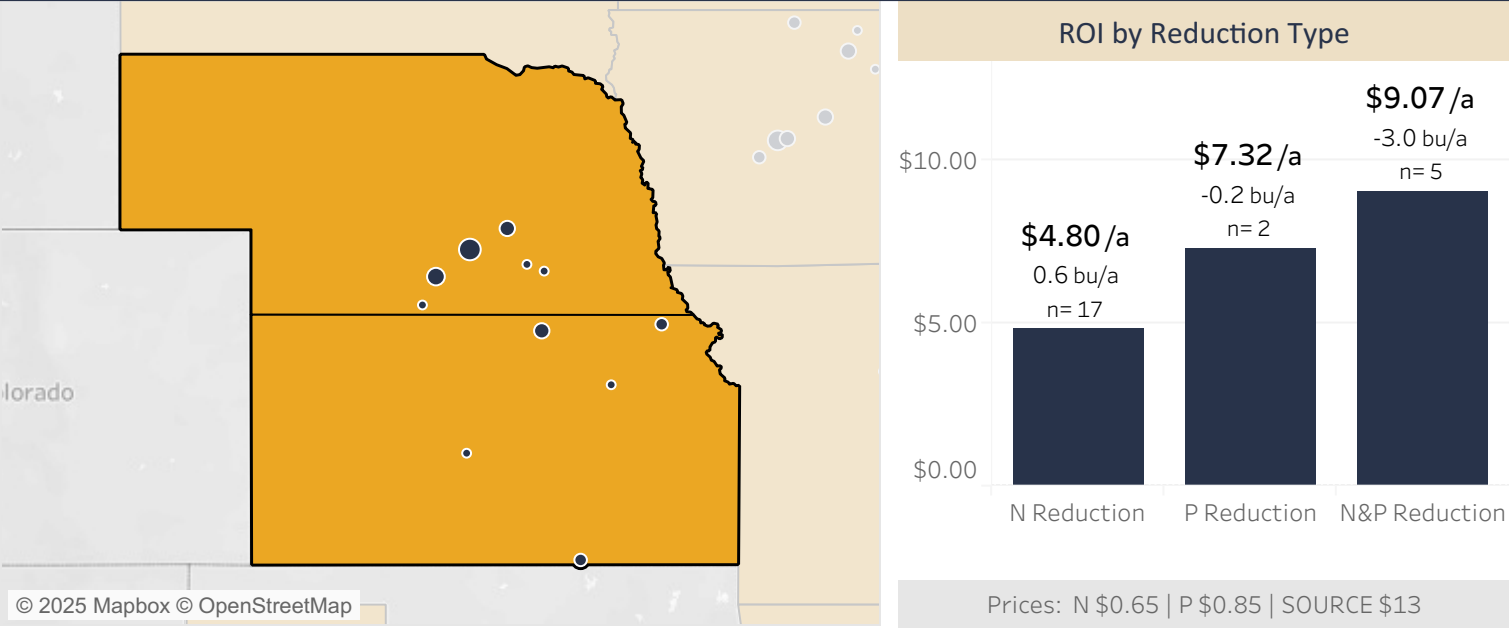
TX | 2021-2024



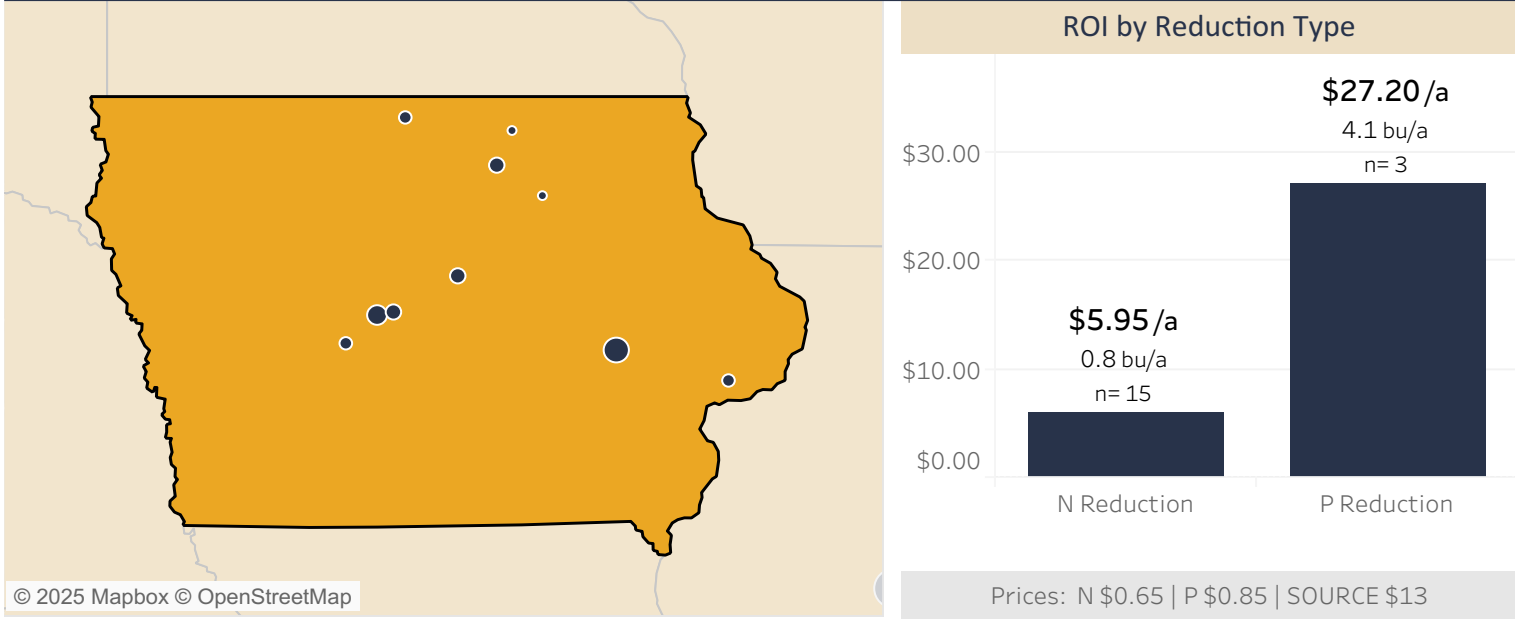
NY, PA, MD, DE, VA, NC | 2021-2024



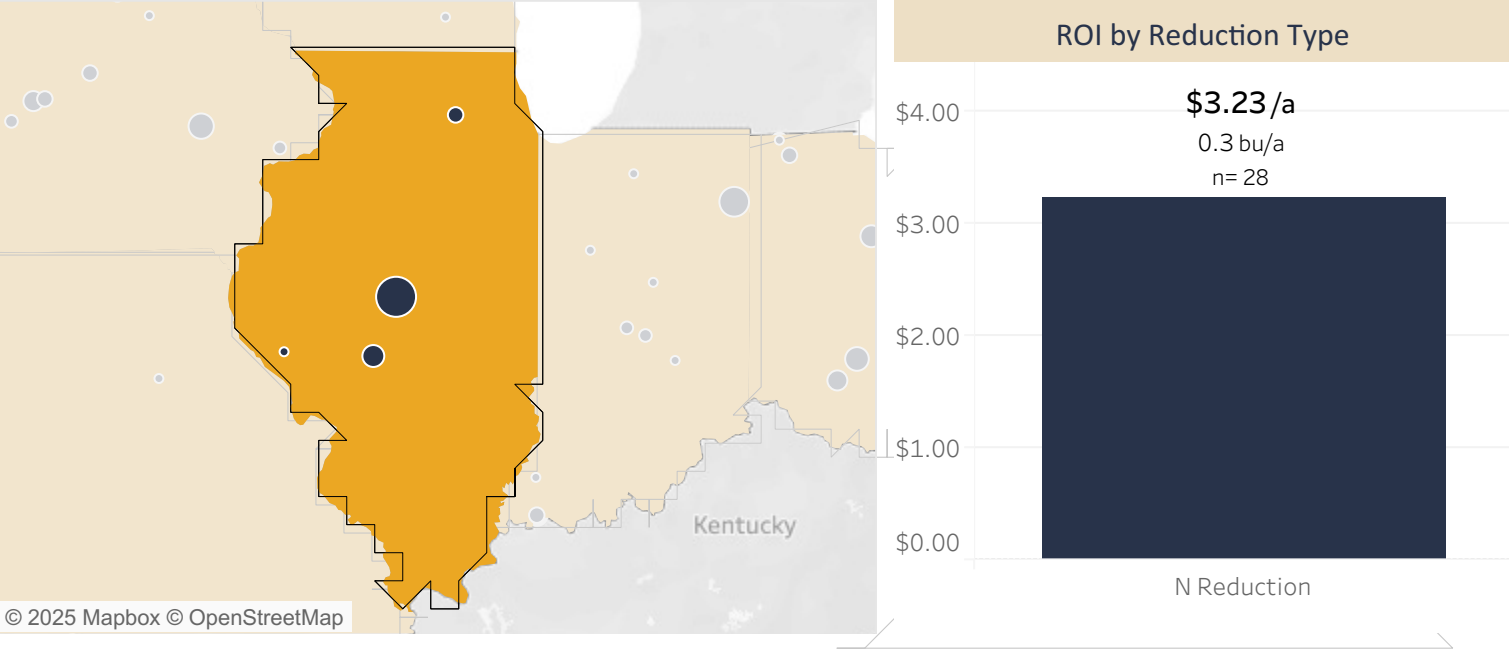
CORN EFFICIENT ACRE FEATURED REGIONS
NE, KS | 2021-2024

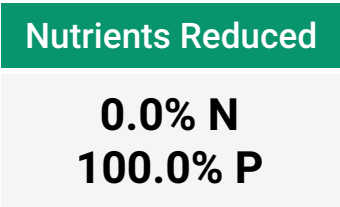
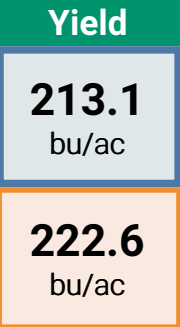
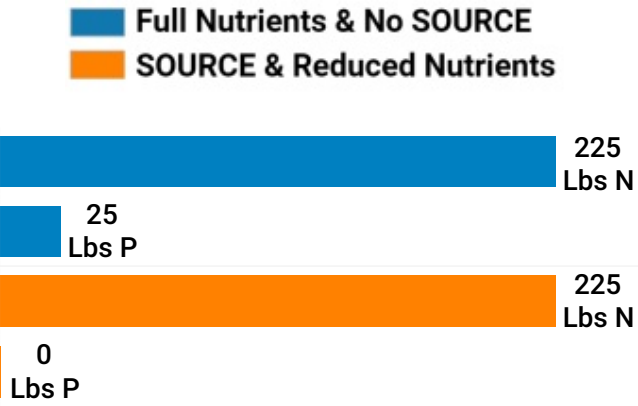
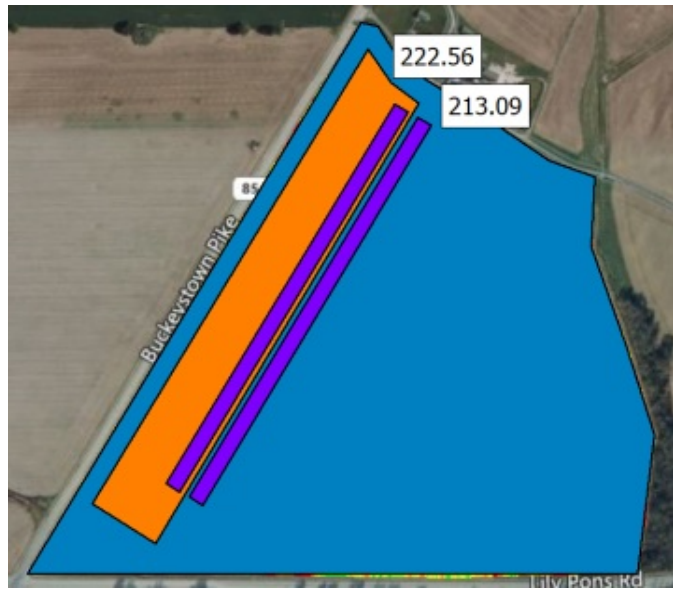


CORN EFFICIENT ACRE FEATURED REGIONS
IA | 2021-2024



IL | 2021-2024





Financial Impact (per acre)

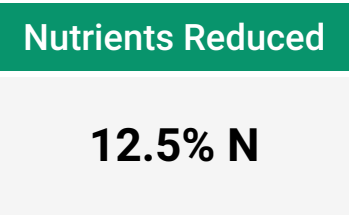
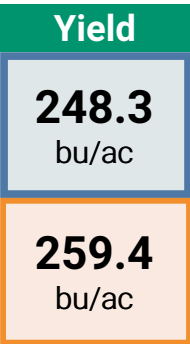
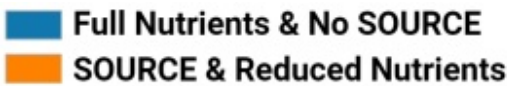
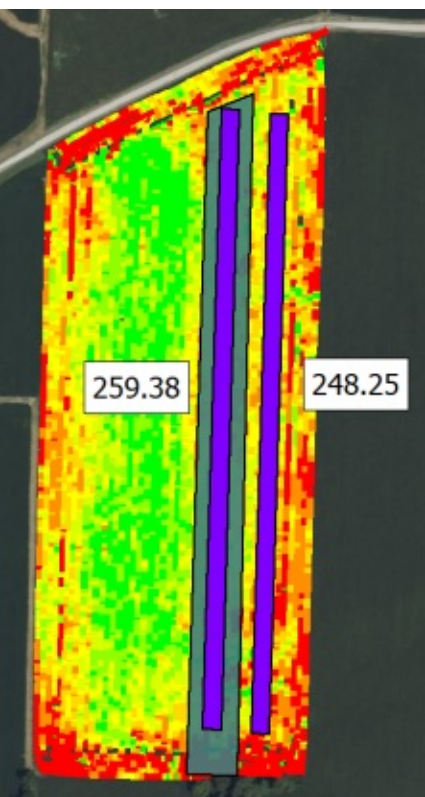
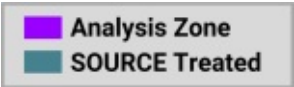
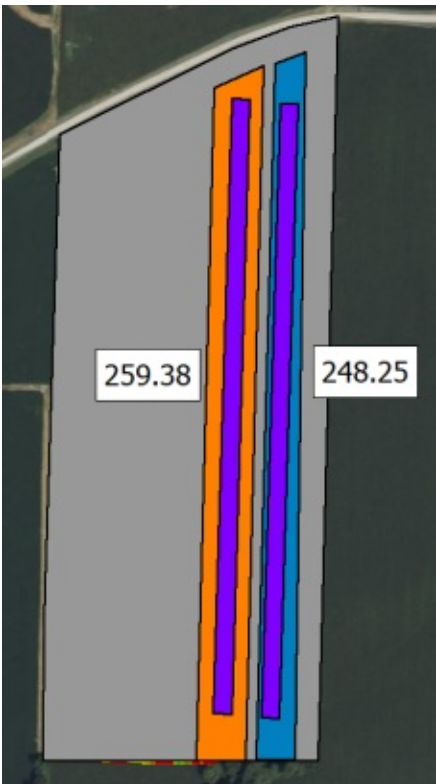
SOURCE Cost:	\$15.00
SOURCE Lift Profit:	\$44.27
Fertilizer Savings:	\$21.25

Profitability per acre: + \$50.52

SOURCE Cost	Crop Price	N cost/unit	P cost/unit
15.00	4.66	0.00	0.85

Trial Summary

Prior Crop:	Corn
Coiver Crop:	Wheat
Tillage:	No Till
Irrigation:	None
Manure:	None
NUE:	1.1
Yield Lift:	9.5



Financial Impact (per acre)

SOURCE Cost:	\$15.00
SOURCE Lift Profit:	\$51.73
Fertilizer Savings:	\$15.00

Profitability per acre: + \$51.73

SOURCE Cost	Crop Price	N cost/unit	P cost/unit
15.00	4.66	0.60	0.00

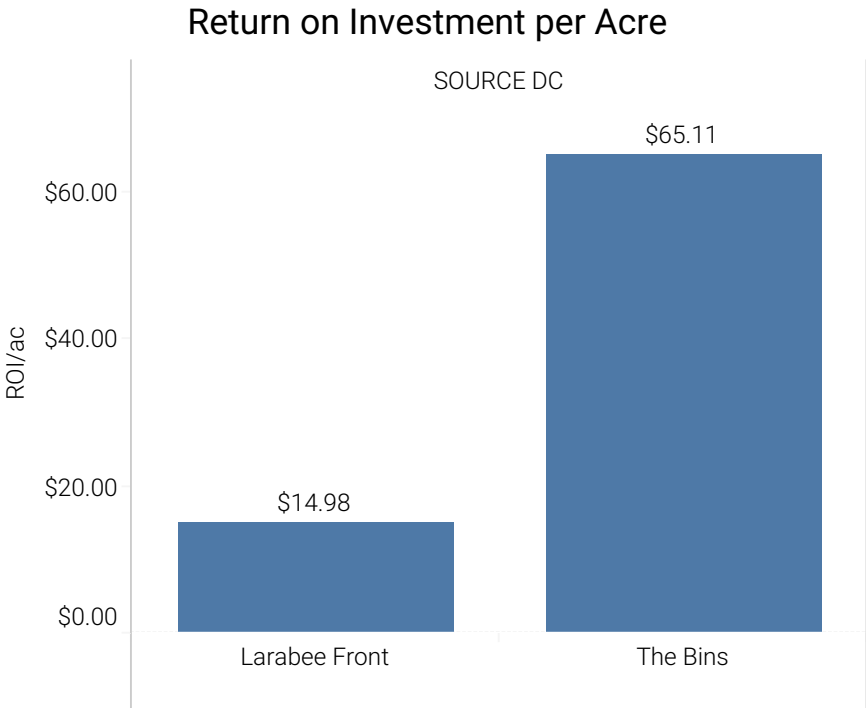
Trial Summary

Prior Crop:	Soybean
Coiver Crop:	None
Tillage:	Full Tillage
Irrigation:	None
Manure:	None
NUE:	0.8
Yield Lift:	11.1



Program Summary

Field	Product	App Stage	N	N Reduced	P	P Reduced
The Bins	DC	V4	250.0	15.0	100.0	25.0
Larabee Front	DC	V4	200.0	6.0	100.0	25.0

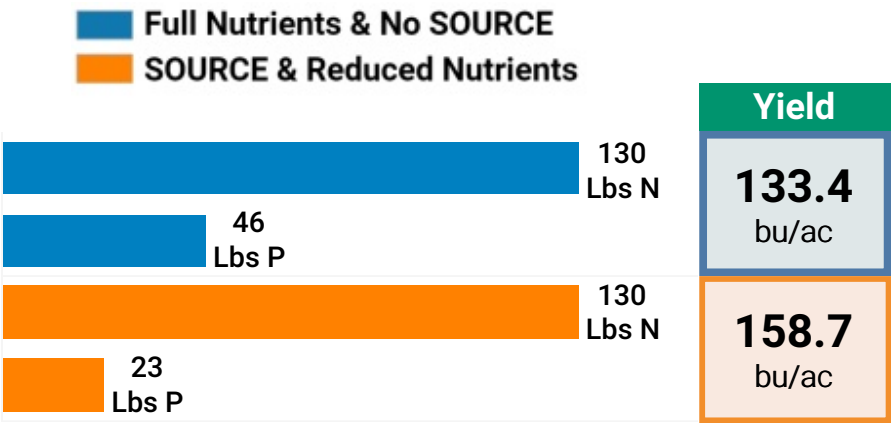
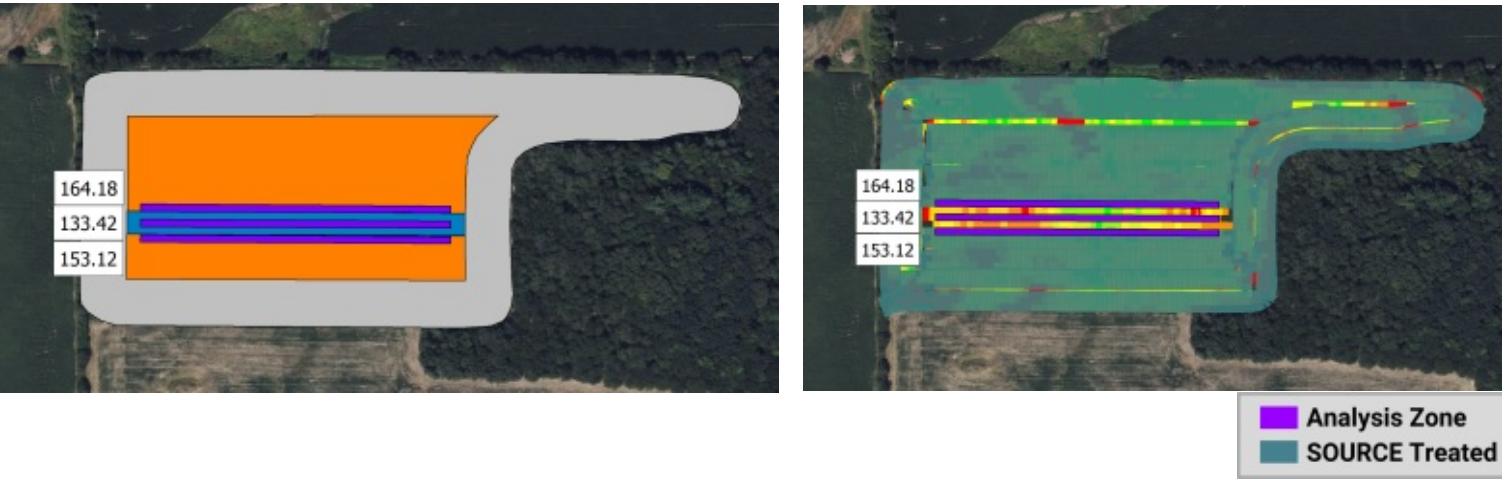


Fert Savings/ Acre

\$27.55 /ac

Avg. N cost/unit	\$0.60
Avg. P cost/unit	\$0.85
Avg. Crop Price	\$4.66
Avg. SOURCE Cost	\$15.00

Note: Cost per unit N is the Avg. of Oct 2023 and April 2024 prices



Nutrients Reduced

50.0% P

Financial Impact (per acre)

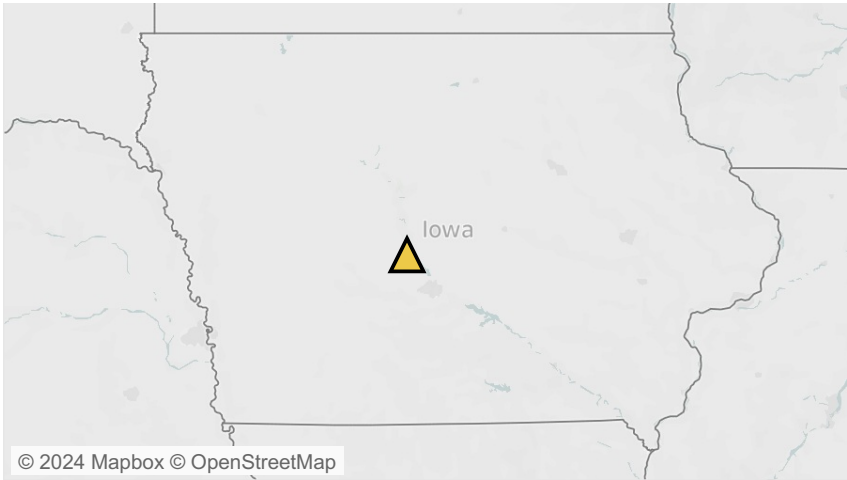
SOURCE Cost:	\$15.00
SOURCE Lift Profit:	\$117.43
Fertilizer Savings:	\$19.55

Profitability per acre: **+ \$121.98**

SOURCE Cost	Crop Price	N cost/unit	P cost/unit
15.00	4.66	0.00	0.85

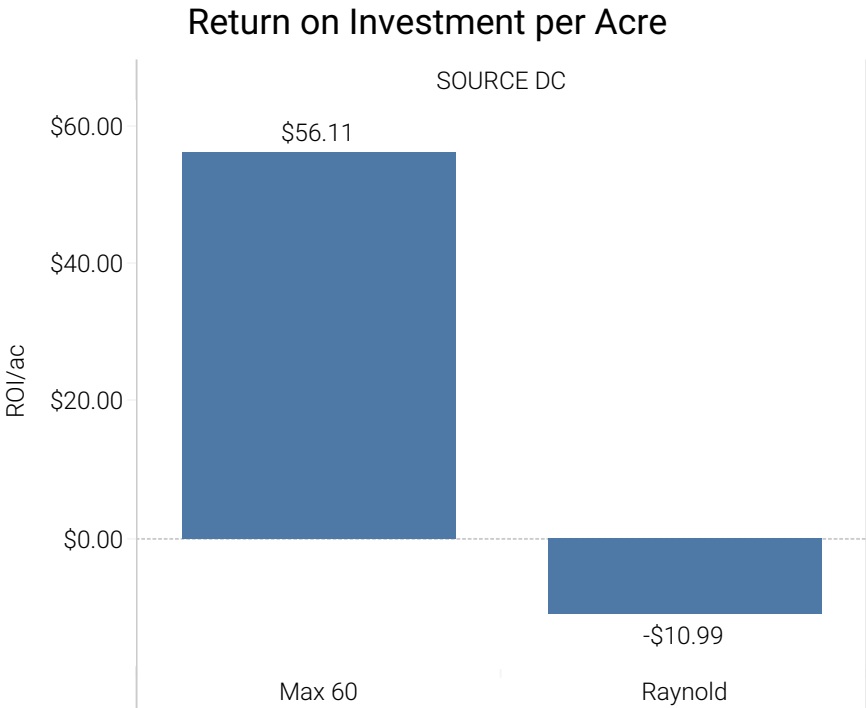
Trial Summary

Prior Crop:	Soybean
Coiver Crop:	Cereal Rye
Tillage:	No Till
Irrigation:	None
Manure:	None
NUE:	1.0
Yield Lift:	25.2



Program Summary

Field	Product	App Stage	P	P Reduced	Yield Lift
Max 60	DC	V4	78.00	25.00	10.74
Raynold	DC	V4	72.20	25.00	-3.74

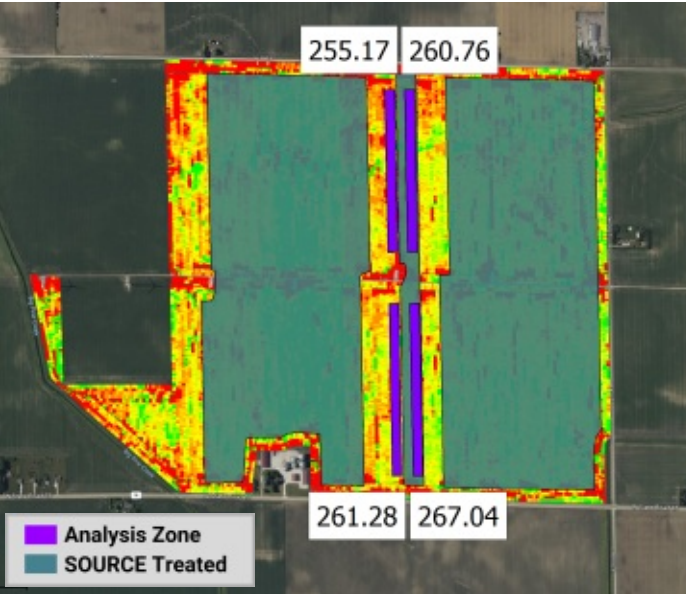
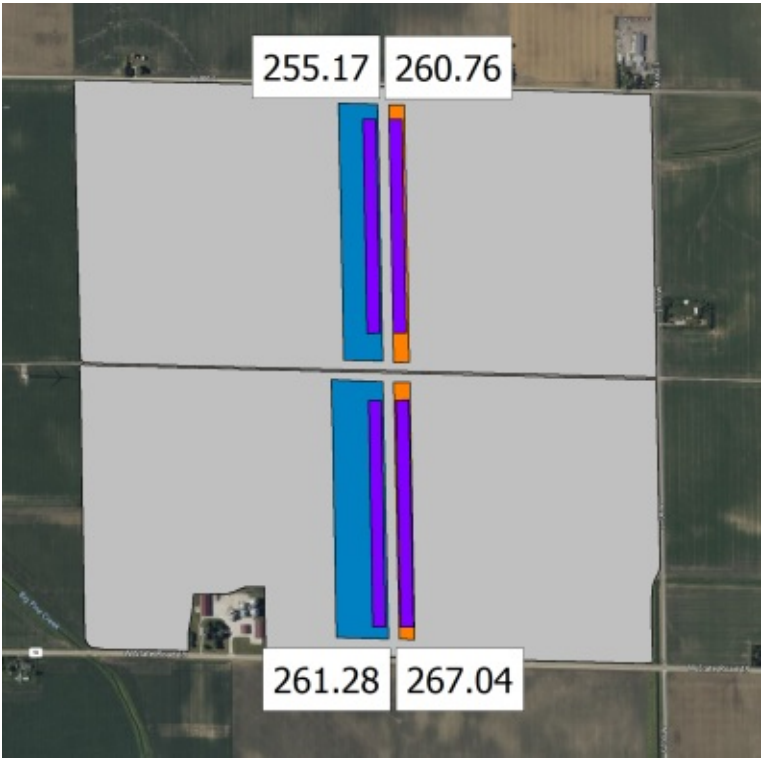


Fert Savings/ Acre

\$21.25 /ac

Avg. N cost/unit	\$0.00
Avg. P cost/unit	\$0.85
Avg. Crop Price	\$4.66
Avg. SOURCE Cost	\$15.00

Note: Cost per unit N is the Avg. of Oct 2023 and April 2024 prices



Full Nutrients & No SOURCE
SOURCE & Reduced Nutrients



Yield
258.2 bu/ac
263.9 bu/ac

Nutrients Reduced

11.3% N

Financial Impact (per acre)

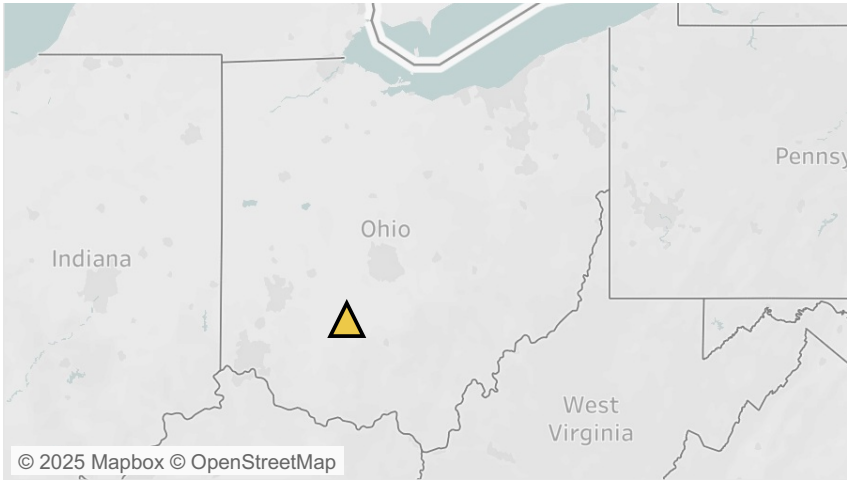
SOURCE Cost:	\$15.00
SOURCE Lift Profit:	\$26.56
Fertilizer Savings:	\$16.20

Profitability per acre: **+ \$27.76**

SOURCE Cost Crop Price N cost/unit P cost/unit

Trial Summary

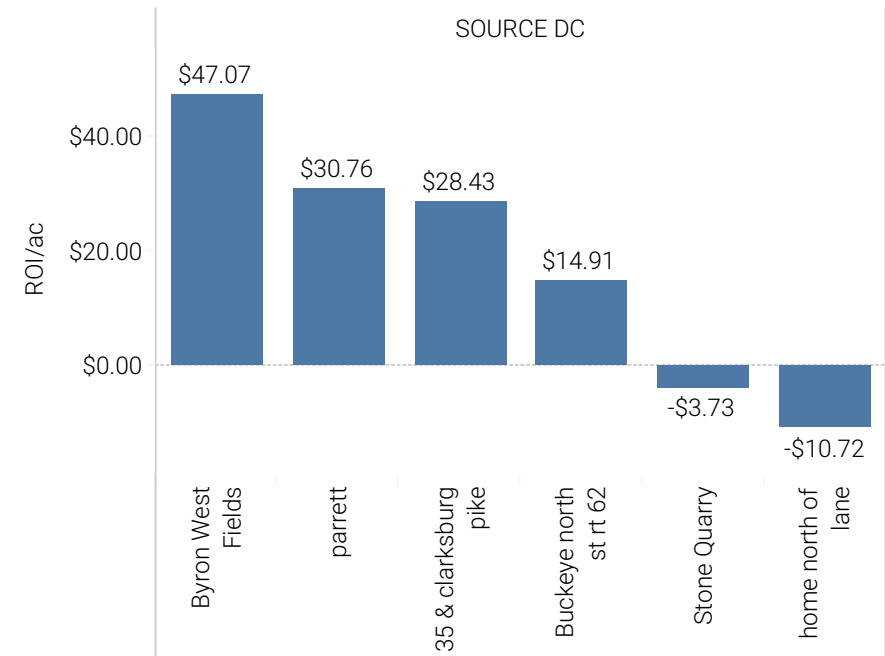
Prior Crop:	Corn
Coiver Crop:	None
Tillage:	Full Tillage
Irrigation:	None
Manure:	None
NUE:	0.9
Yield Lift:	5.7



Program Summary

Field	Product	App Stage	N	N Reduced	Yield Lift	ROI/ac
Byron West Fields	DC	V4	195.0	25.0	10.1	\$47.07
parrett	DC	V4	195.0	25.0	6.6	\$30.76
35 & clarksburg pike	DC	V4	195.0	25.0	6.1	\$28.43
Buckeye north st rt ..	DC	V4	195.0	25.0	3.2	\$14.91
Stone Quarry	DC	V4	195.0	25.0	-0.8	-\$3.73
home north of lane	DC	V4	195.0	25.0	-2.3	-\$10.72

Return on Investment per Acre



Fert Savings/ Acre

\$15.00 /ac

Avg. N cost/unit	\$0.60
Avg. P cost/unit	\$0.00
Avg. Crop Price	\$4.66
Avg. SOURCE Cost	\$15.00

Note: Cost per unit N is the Avg. of Oct 2023 and April 2024 prices



CORN SILAGE RESULTS



Products

SOURCE DC

Yield Impact
.8-1.4+ tons

Win Rate
77%

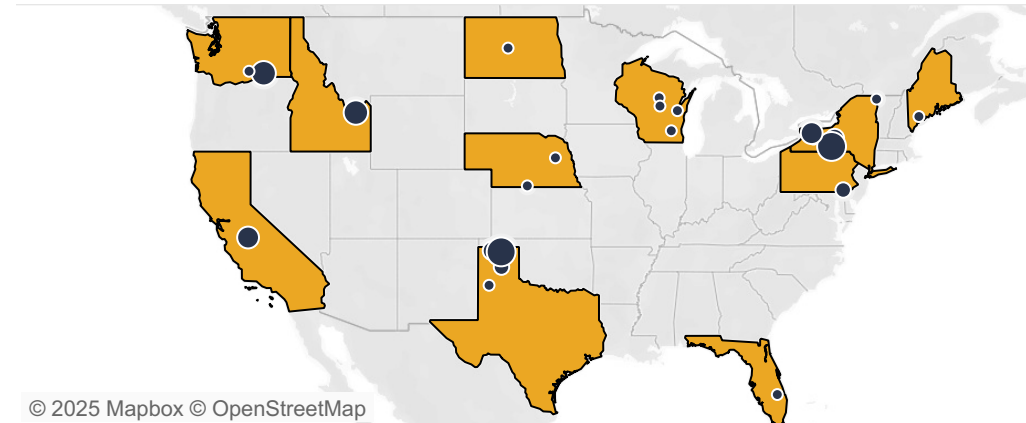
Avg ROI/ac
\$30-50+

SOURCE consistently delivers value for silage growers by increasing biomass and quality. The 4-year average yield improvement is nearly 1 T/ac with a 77% win rate.

Our experience with silage over 4 years has revealed two important aspects of proper placement. First, the application timing matters: we recommend the V4-V6 timing window. Next, as shown in the chart, growers who apply less than 100 units of synthetic nitrogen achieve even greater results, averaging 1.4 T/ac uplift.

SOURCE has been tested in every major silage-producing region and consistently provides \$30+ per acre in return to silage growers.

CORN SILAGE RESULTS Commercial Trials | 2021 - 2024



© 2025 Mapbox © OpenStreetMap

Yield Lift Average

0.9 tons/a

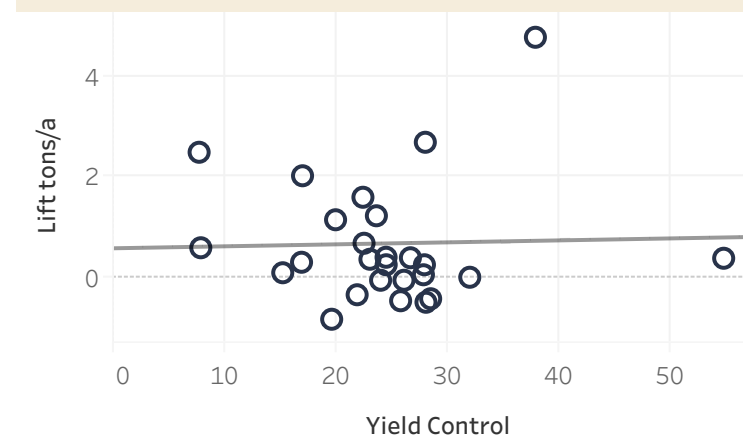
n= 56

77% Win Rate

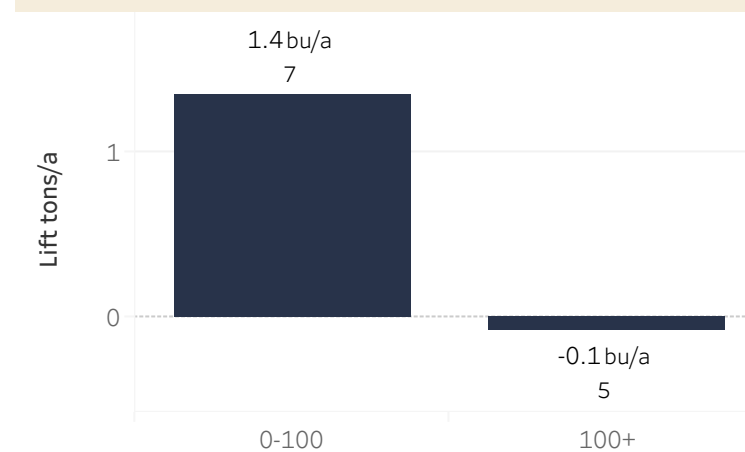
Year
2020 to 2024

Field Type
All

Yield lift by Yield Environment



Yield Lift by Total N Applied



SOURCE NON-TREATED

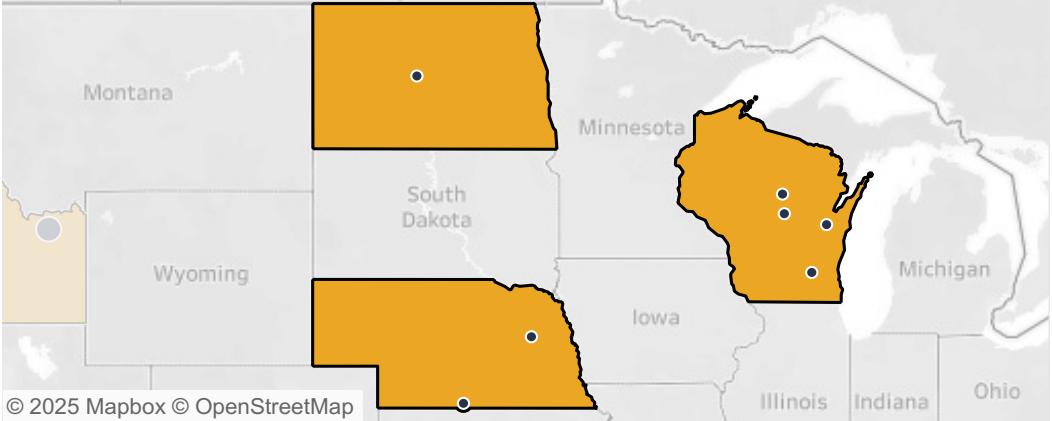


SOURCE NON-TREATED



SOURCE NON-TREATED

CORN SILAGE **FEATURED REGION**
ND, NE, WI | 2021-2024

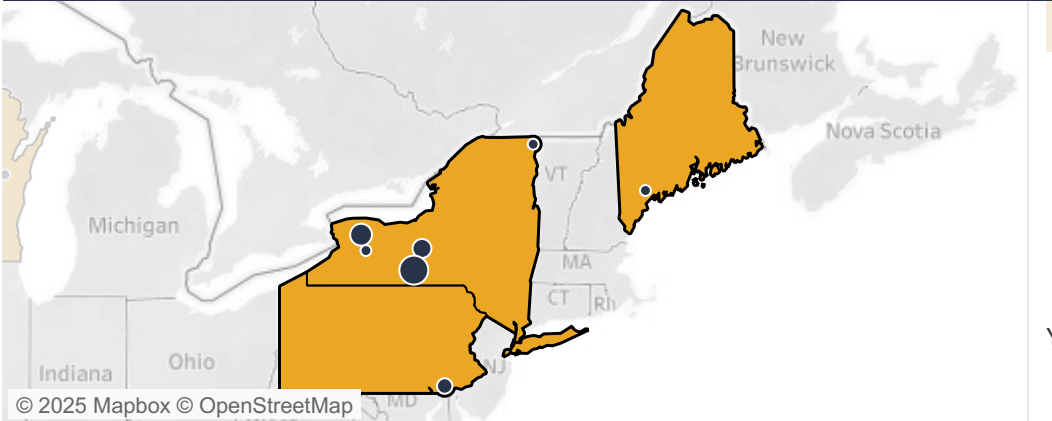


Yield Lift Average

1.1 tons/a
n= 7
86% Win Rate

Year
2020 to 2024
Field Type
All

ME, NY, PA | 2021-2024

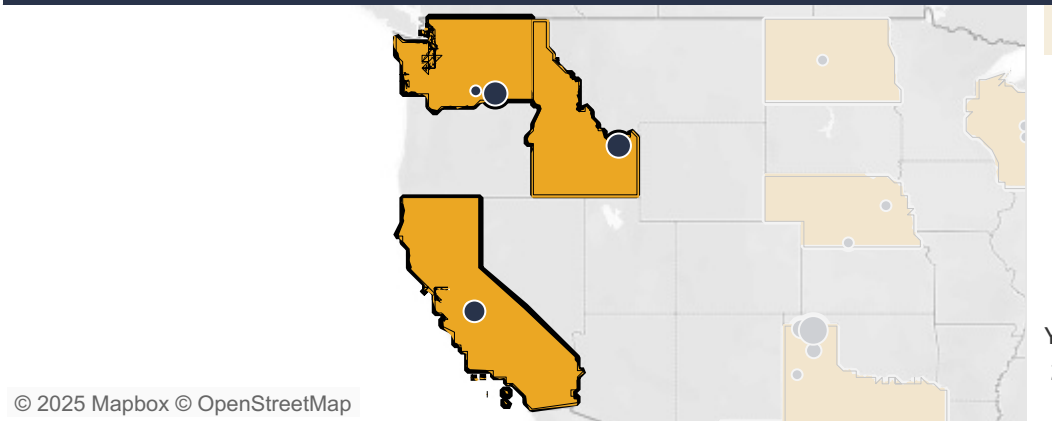


Yield Lift Average

0.8 tons/a
n= 19
73% Win Rate

Year
2020 to 2024
Field Type
All

CA, WA, ID | 2021-2024



Yield Lift Average

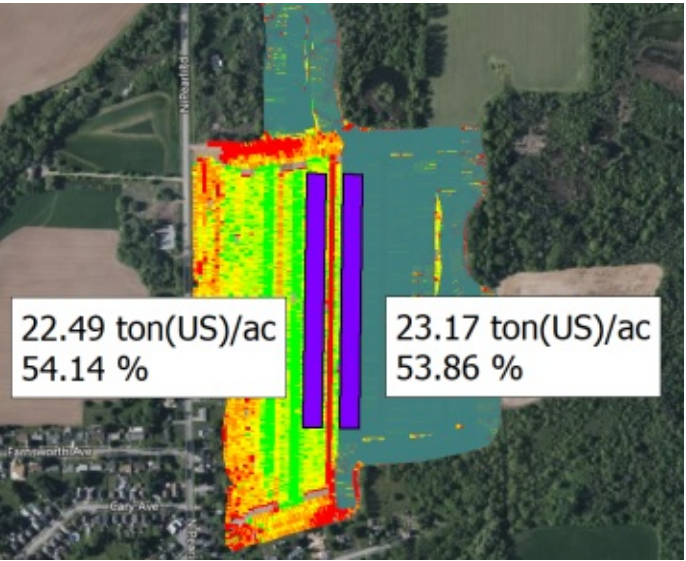
1.3 tons/a
n= 16
81% Win Rate

Year
2020 to 2024
Field Type
All

CORN SILAGE **FEATURED TRIAL**
NY | 2024

Field Information

Prior Crop: Silage Corn
Cover Crop: None
Tillage: Strip Till
Irrigation: None
Manure: Dairy/Cattle
Manure (Liquid-Lagoon)
Total N:



Analysis Zone
SOURCE Treated

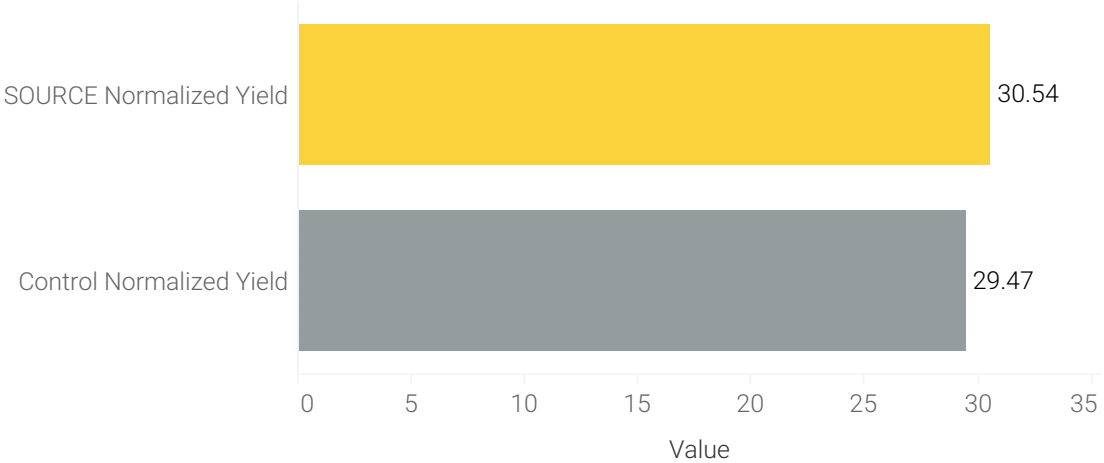
22.49 ton(US)/ac
54.14 %

23.17 ton(US)/ac
53.86 %

Trial Results

* Yield below are normalized to 65% moisture for consistency *

Field	Crop	Product	Application Stage	SOURCE Normalized Yield	Control Normalized Yield	Normalized Yield Lift
Field 307	Silage Corn	DC	Null	30.54	29.47	1.08



Average % Gain
+ 3.65%

ROI
+ \$38.82

NY

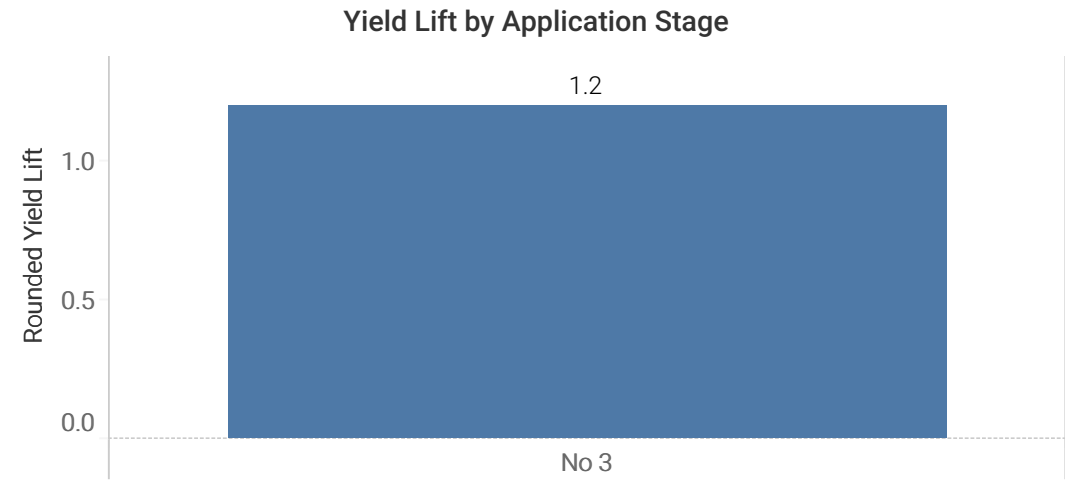
Crop Price \$50.00
SOURCE Cost \$15.00

CORN SILAGE **FEATURED TRIAL**
WA | 2024



Trial Summary

Field	SOURCE Yield	Control Yield	Yield Lift	ROI
No 3	24.8	23.6	1.2	\$45.00



Average Yield Lift
+ 1.2 tons/ac

Average % Gain
+ 5.1%

WA

SOURCE DC

Crop Price	\$50.00
SOURCE Cost	\$15.00



SOYBEAN MAXIMUM ACRE RESULTS



Products

SOURCE DC

BLUEPRINT Liquid

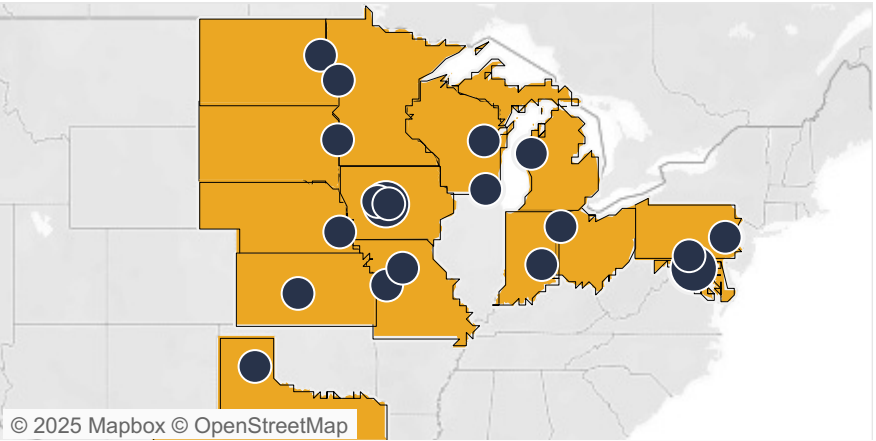
BLUEPRINT Powder

Yield Impact
2-4+ bu
Win Rate
60%
Avg ROI/ac
\$10-20+

The Maximum Acre Solution is the ultimate chemistry and biology 1-2 punch, ensuring your crop gets the nutrients it needs all season long. SOURCE + BLUEPRINT work together to unlock and deliver essential nutrition, maximizing your crops' health and yield.

This powerful synergy provides up to a 2-4+ bu increase with a 60% win rate in soybeans. With a strong dependence on weather, yield can be challenging to impact on soybeans. But the Maximum Acre solution provides insurance that your soybeans get what they need and have the potential to take advantage of favorable conditions.

SOYBEAN MAXIMUM ACRE Commercial Trials | 2024



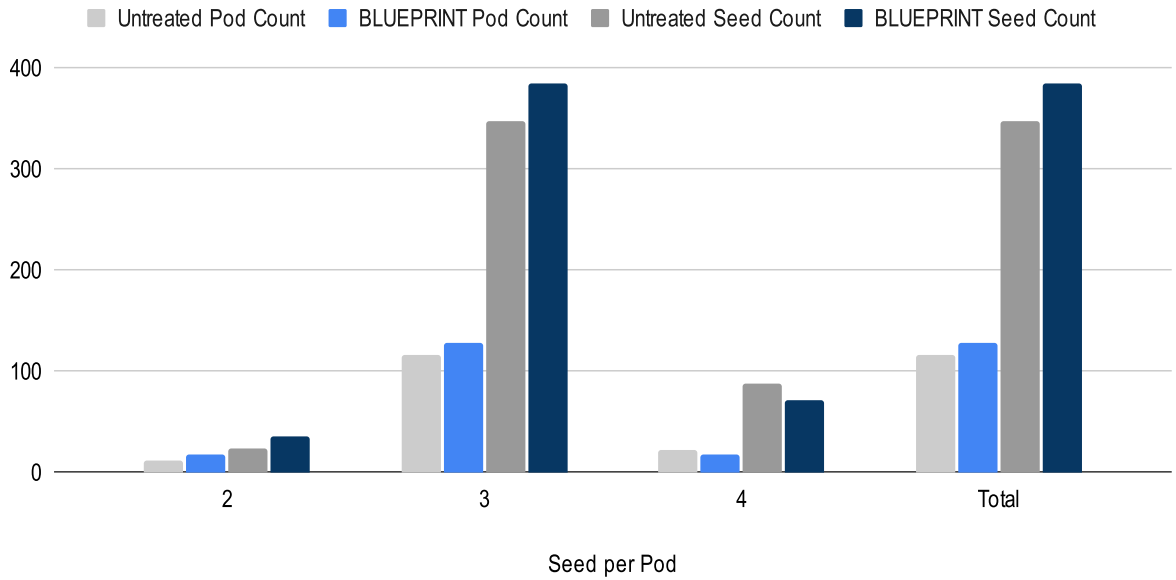
Yield Lift Average

2 bu/a

n=22

Win Rate: 59%

Featured Trial - Seed & Pod Count



Notes: In this soybean trial, SOURCE & BLUEPRINT are shown here to increase both pod count and seed count vs. the control.



Field Information

Prior Crop:

Cover Crop:

Tillage:

Irrigation:

Manure:

Total N:

Corn

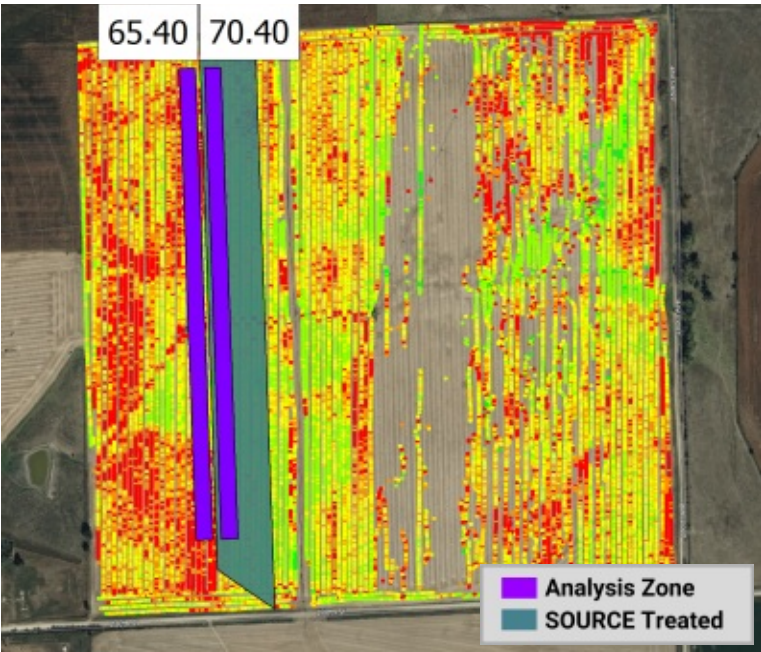
None

No Till

Pivot

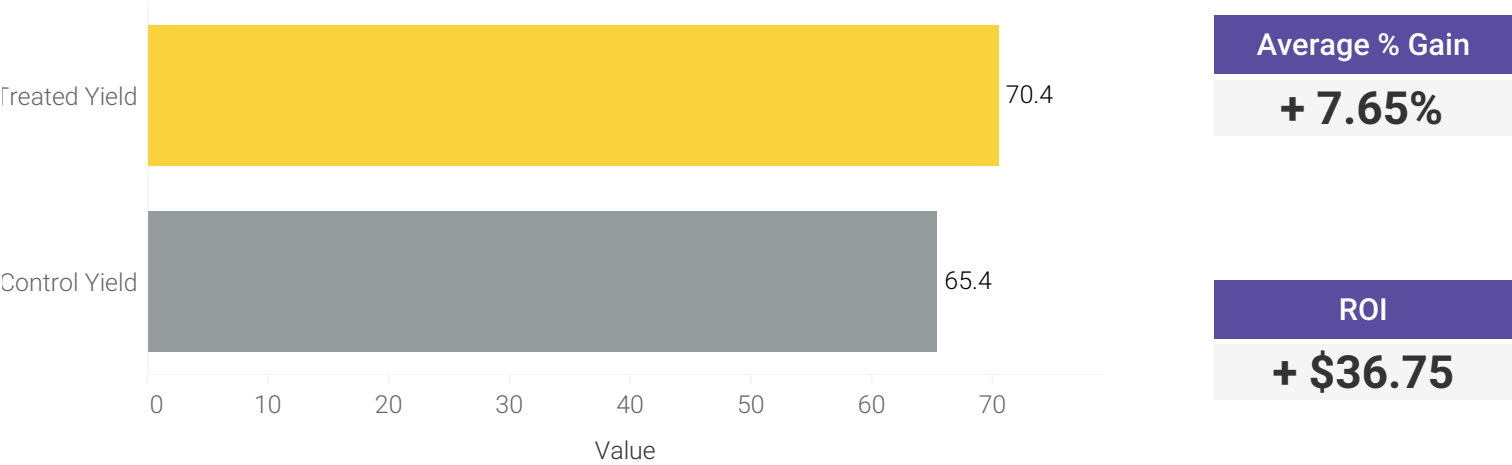
None

0.00



Trial Results

Field	Crop	Product	Application Stage	Treated Yield	Control Yield	Yield Lift
Wilson SE	Soybean	DC	Null	70.4	65.4	5.0



NE

Crop Price	\$11.55
SOURCE + Charge Cost	\$21.00

Field Information

Prior Crop:

Cover Crop:

Tillage:

Irrigation:

Manure:

Total N:

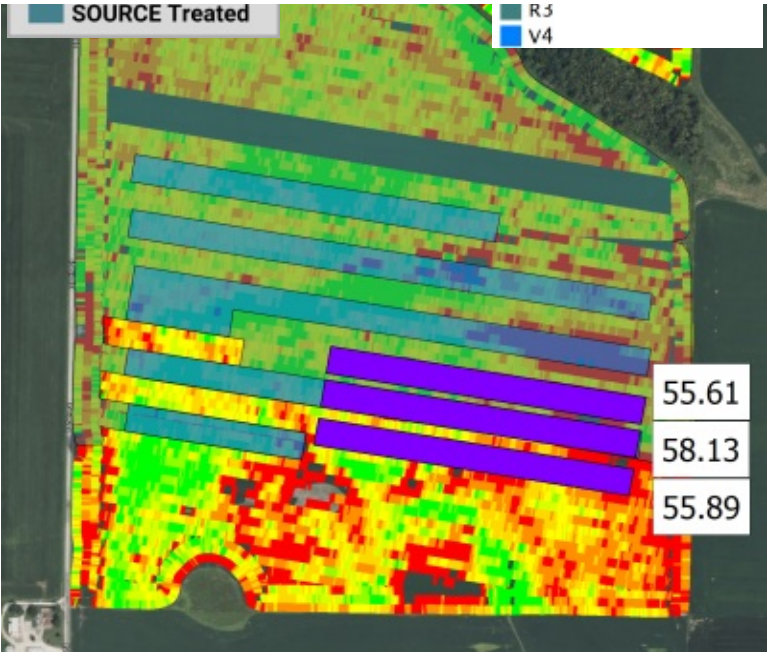
Corn

None

Full Tillage

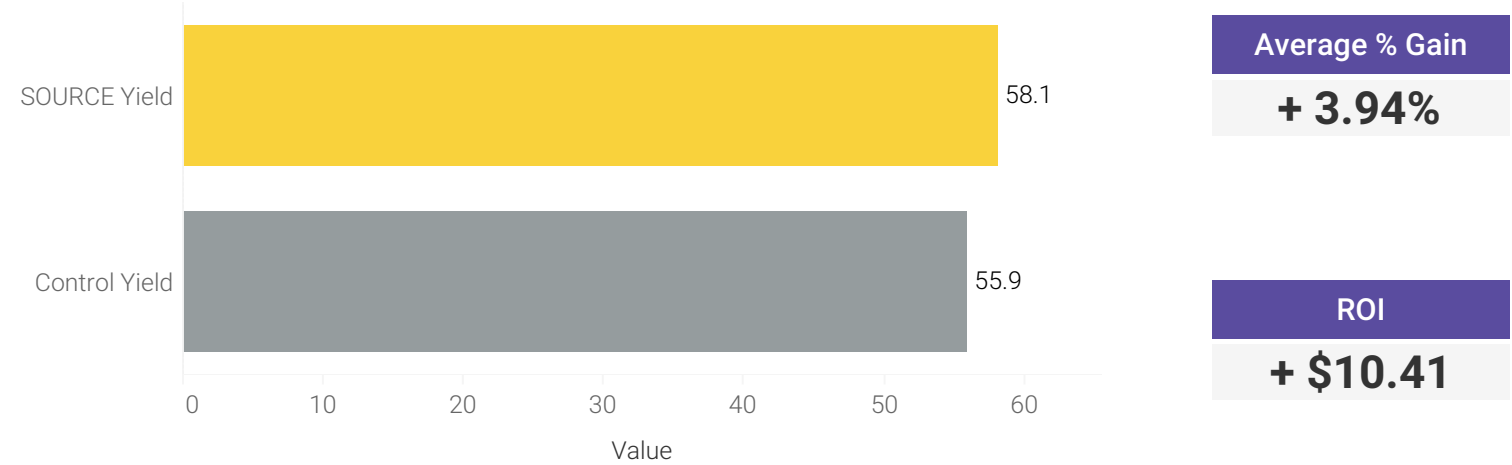
None

None



Trial Results

Field	Crop	Product	Application Stage	SOURCE Yield	Control Yield	Yield Lift
Miller	Soybean	DC	V4	58.1	55.9	2.2



IL

Crop Price	\$11.55
SOURCE Cost	\$15.00

SOYBEAN COMPARISON PHOTOS
Commercial Trials | 2024



SOURCE+
BLUEPRINT

NON-TREATED



SOURCE+
BLUEPRINT

NON-TREATED



SOURCE+
BLUEPRINT

Untreated
NON-TREATED



SOURCE+
BLUEPRINT

NON-TREATED



SOURCE+
BLUEPRINT

NON-TREATED



COTTON RESULTS

Products

SOURCE XC

SINGLE APPLICATION

Yield Impact
70+ lb

Win Rate
73%

ROI/ac
\$30+

DOUBLE APPLICATION

Yield Impact
90+ lb

Win Rate
87%

ROI/ac
\$30+

SOURCE XC is the ultimate nutrient optimization solution for cotton. By improving nutrient availability and plant health, SOURCE helps cotton maximize yield potential while maintaining a strong return on investment.

A single application delivers 70+ lb/ac with a 73% win rate, and a double application boosts yield to 90+ lb/ac with an impressive 87% win rate, showing the power of an additional pass. Backed by extensive field trials across all major cotton-producing regions, growers are consistently seeing over \$30 per acre ROI, making SOURCE a proven solution for maximizing cotton yield and profitability.

COTTON RESULTS

CRO Trials | 2024

SOURCE vs. Control (Single and Double Application)

Location	SOURCE (Single Application)	SOURCE (Double Application)
Richmond, TX	245	295
Pantego, NC	-75	210
Waller, TX	170	200
Mantee, MS	185	160
Leland, MS	85	150
Jay, FL	45	135
Groom, TX	155	70
Memphis, TN	165	70
Levelland, TX	25	55
Edmondson, AR	10	40
Belvidere, NC	-100	30
San Angelo, TX	105	10
Blackville, SC	5	10
Chula, GA	70	-10
Belvidere, NC	-5	-40

SOURCE vs. Control Averages (Single and Double Application)

Treatment	Yield
Control	1222
SOURCE (Single Application)	1293.7
SOURCE (Double Application)	1313.1

35



SOURCE NON-TREATED



SOURCE NON-TREATED



SOURCE NON-TREATED



SOURCE NON-TREATED



WHEAT RESULTS



Products

SOURCE XC

Yield Impact

2-4+ bu

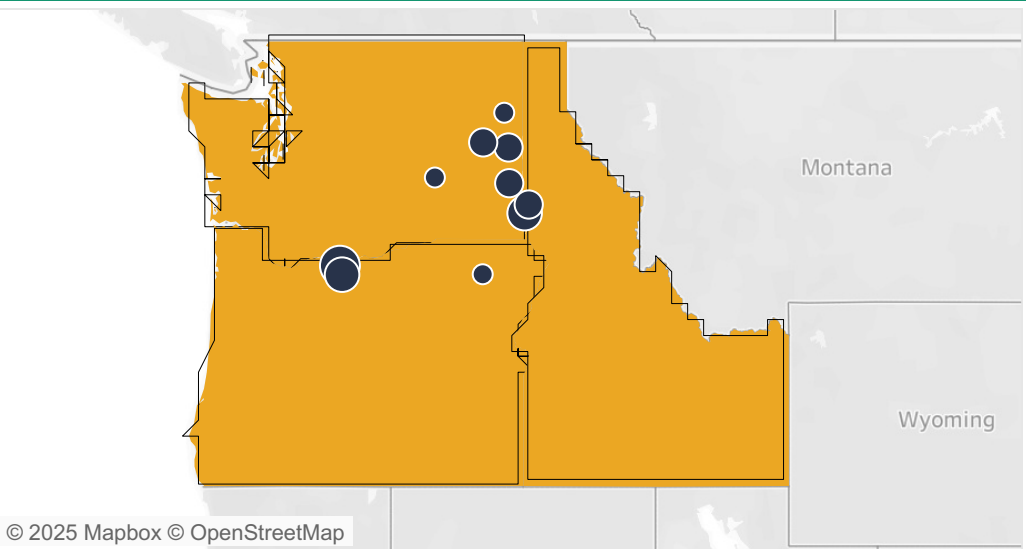
Win Rate

80%

SOURCE XC is the ultimate nutrient efficiency tool for wheat, delivering up to 2-4 bushels per acre with an 80% win rate.

By enhancing nutrient uptake and improving plant resilience, SOURCE helps wheat growers push for higher yields while maintaining strong standability. Trial data has shown impressive results in the Pacific Northwest. Growers can count on SOURCE XC to drive plant and soil health on every acre.

WHEAT FEATURED REGION OR, WA, ID | 2021 - 2024



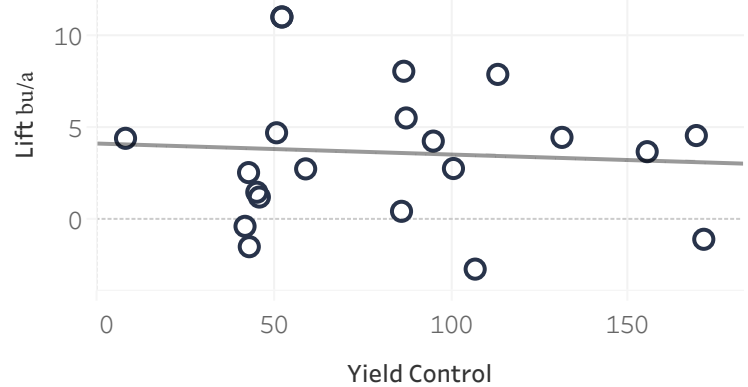
Yield Lift Average

3.6 bu/a

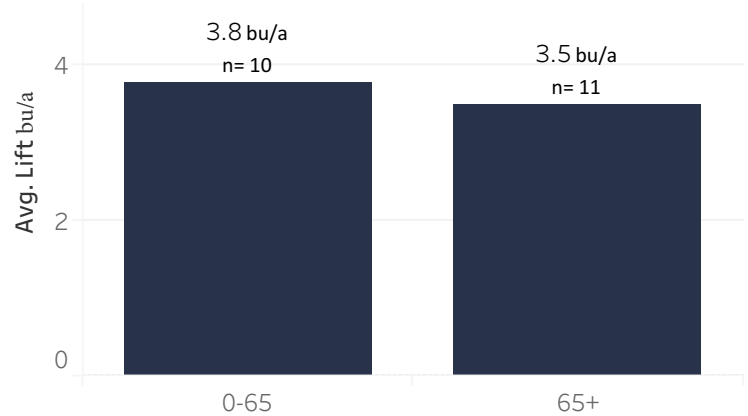
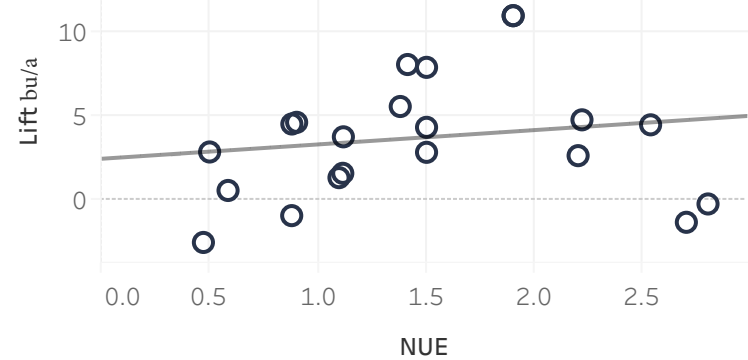
n= 21

81% Win Rate

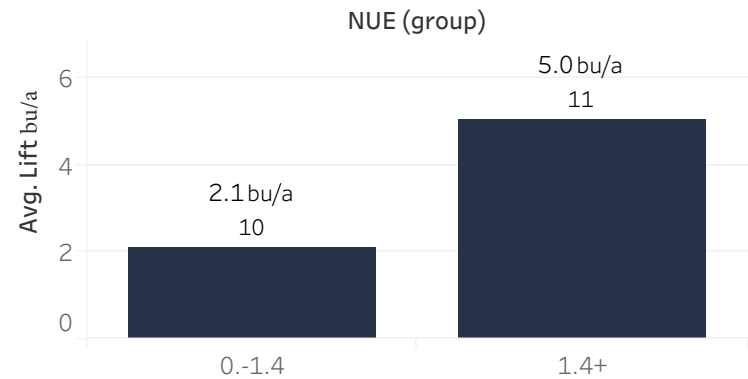
Yield Lift by Yield Environment



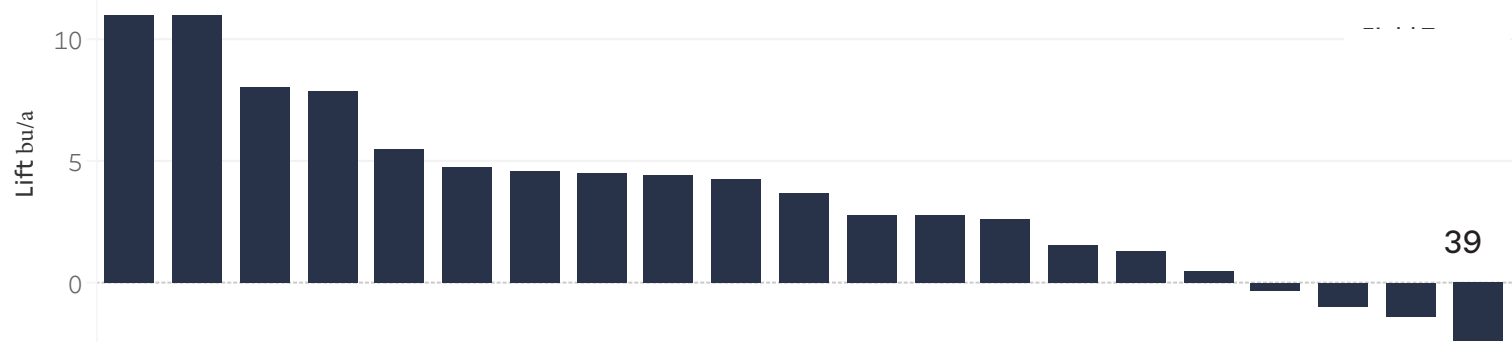
Yield Lift by Total N Applied



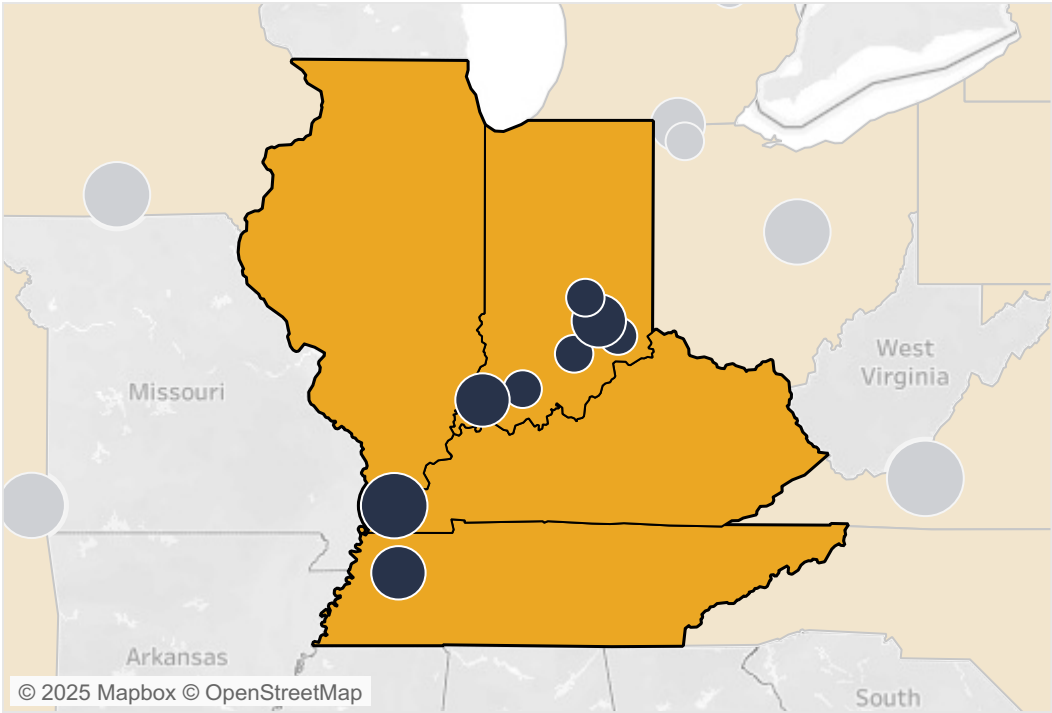
Yield by Total NUE



All Trials



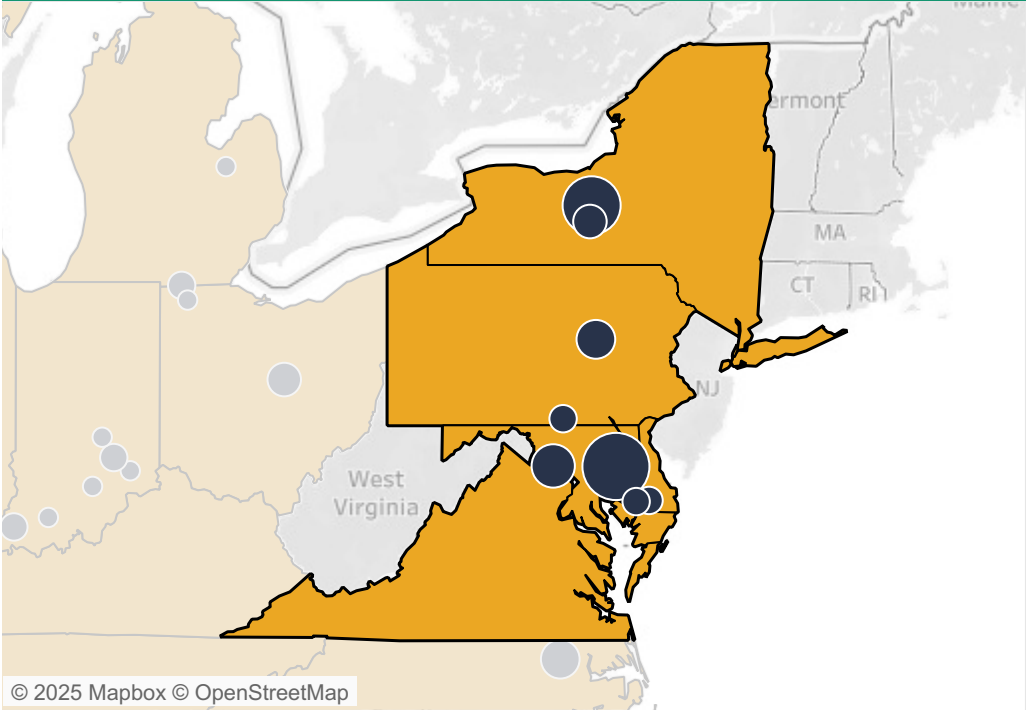
WHEAT FEATURED REGION
IL, IN, KY, TN | 2021 - 2024



Yield Lift Average

3.2 bu/a
n= 13
Win Rate: 69%

NY, PA, VA, MD, DE | 2021 - 2024

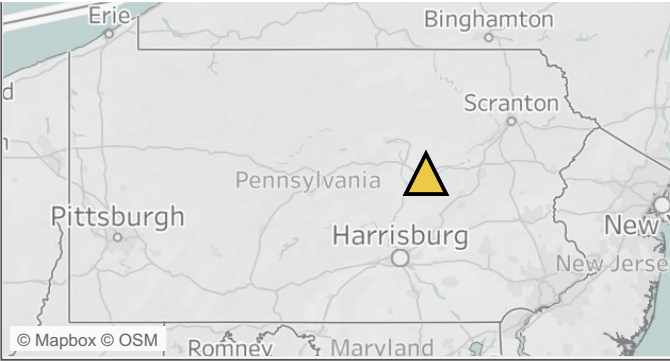


Yield Lift Average

1.7 bu/a
n= 43
Win Rate: 70%

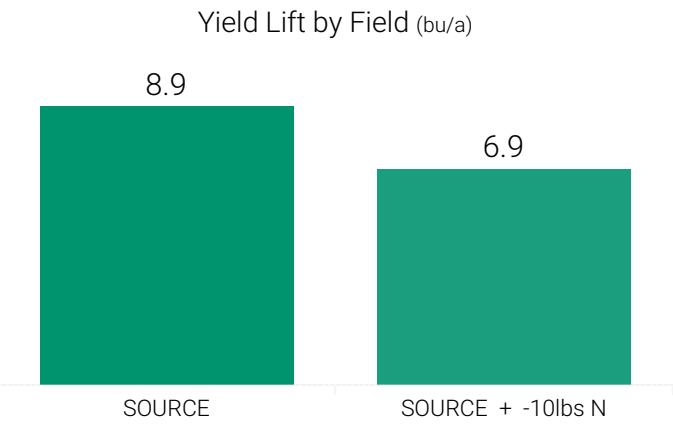
Year

WHEAT FEATURED TRIAL
PA | 2024



Field Summary

Farm	Crop	Field	Application Date	N Units Reduced	SOURCE Yield Avg	Control Yield Avg	Yield Lift per Acre
Pine Hurst Acres	Wheat	SOURCE + -10lbs N		10.0	124.4	117.5	6.9
		SOURCE			126.4	117.5	8.9

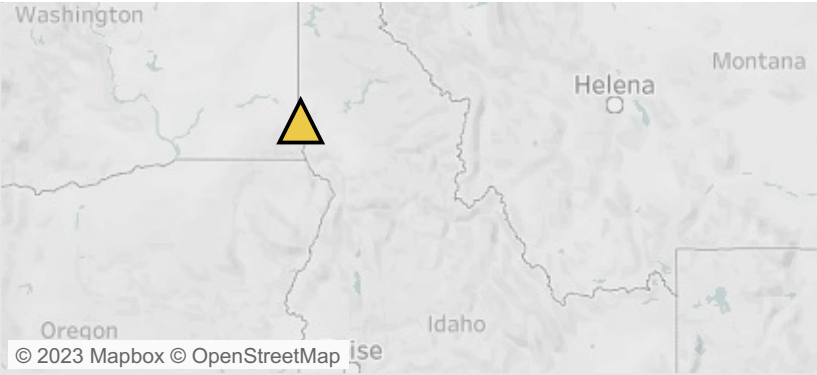


Average Yield Lift	
Wheat	+ 7.9 bu/a

Average ROI by Acre	
SOURCE	+\$39.98
SOURCE + -10lbs N	+\$32.38

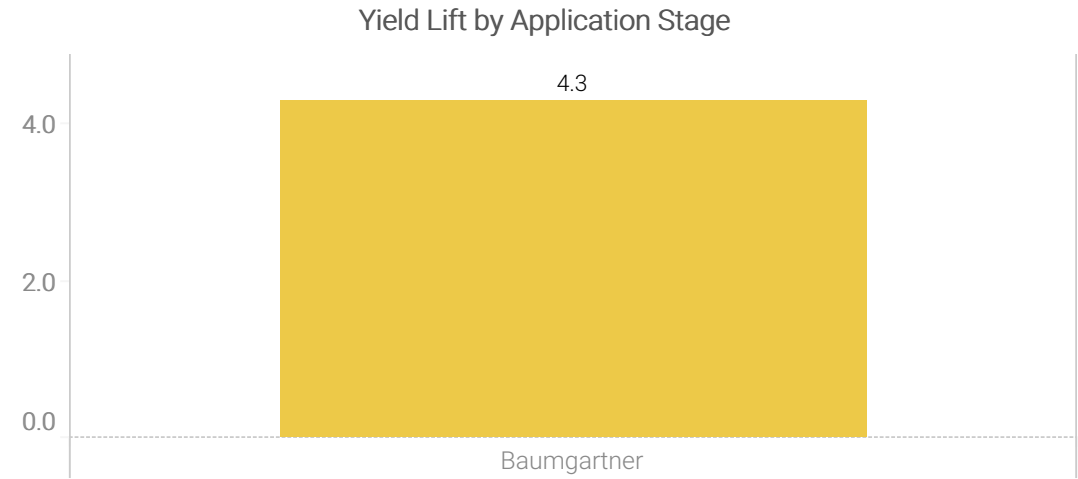
Wheat: \$6
SOURCE: \$13

Pennsylvania



Trial Summary

Field	Crop	Product	Application Stage	SOURCE Yield	Control Yield	Yield Lift per Acre
Baumgartner	Wheat	XC	F6	99.0	94.7	4.3



Average Yield Lift per Acre
+ 4.3 bu/ac

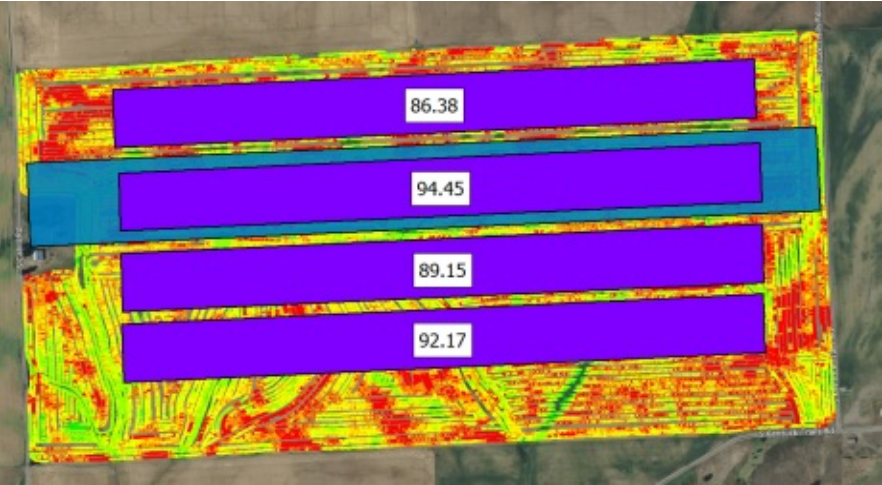
Average % Gain per Acre
+ 4.5% bu/ac

Idaho

XC

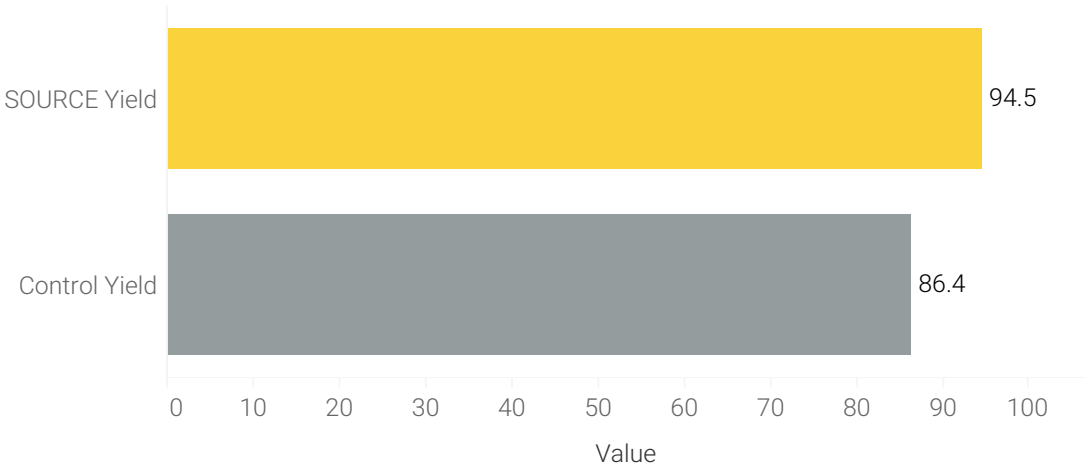
Field Information

Prior Crop: Wheat
Cover Crop: None
Tillage: No Till
Irrigation: None
Manure: None
Total N: 122.00



Trial Results

Field	Crop	Product	Application Stage	SOURCE Yield	Control Yield	Yield Lift
Hein HWS	Spring Wheat	XC	Null	94.5	86.4	8.1



Average % Gain
+ 9.38%

ROI
+ \$35.79

WA

Crop Price	\$6.27
SOURCE Cost	\$15.00

WHEAT COMPARISON PHOTOS

Commercial Trials | 2021 - 2024



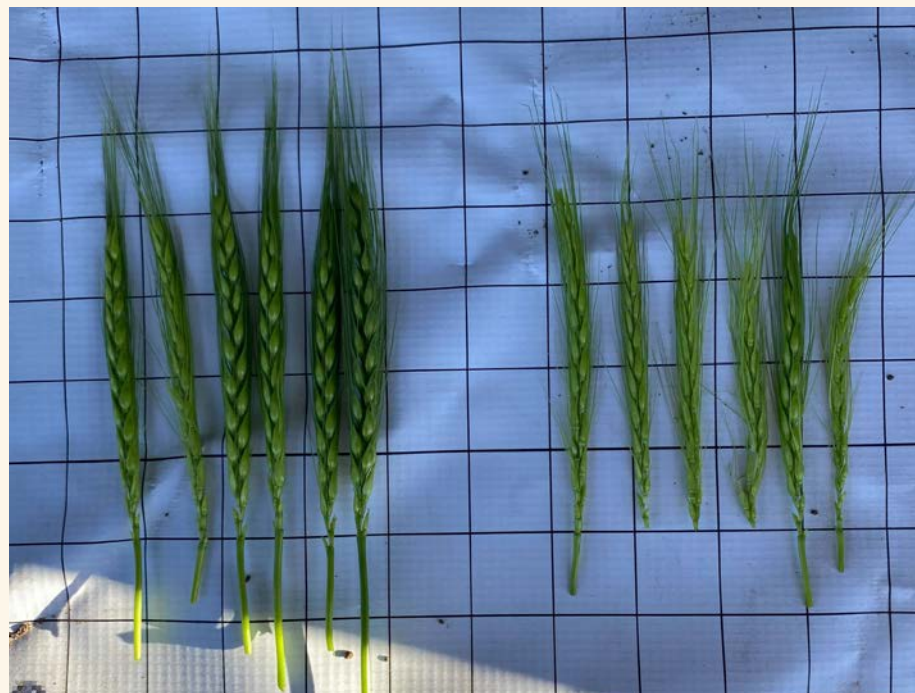
SOURCE

NON-TREATED



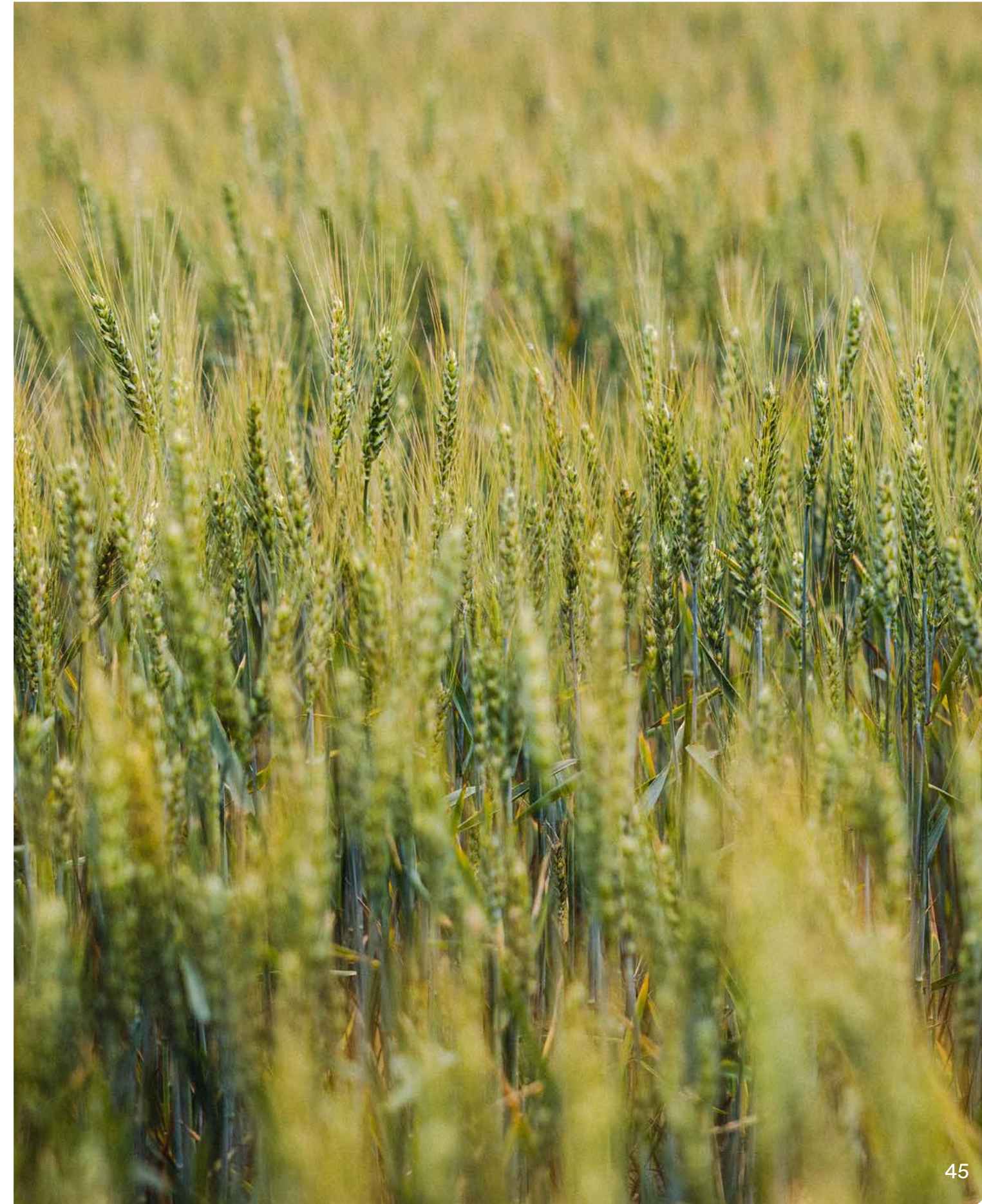
SOURCE

NON-TREATED



SOURCE

NON-TREATED



FORAGES

RESULTS



Products

SOURCE XC

GRASS HAY

Avg ROI/ac

\$100

Win Rate

95%

SOURCE delivers strong ROI on forages like grass hay and alfalfa by increasing biomass due to improved nutrient access throughout the season.

In grass hay, SOURCE generated an average of over \$100 per acre with a 95% win rate, delivering consistent profitability across all acres. For alfalfa, SOURCE delivered over \$20 per acre with an 89% win rate from increased biomass, while also supporting higher-quality forage.

ALFALFA

Avg ROI/ac

\$21

Win Rate

89%

Even more impressive, biomass increases were not limited to the first cutting after the SOURCE application, but were observed on subsequent cuttings throughout the season.

FORAGES COMPARISON PHOTOS

Commercial Trials | 2021 - 2024



SOURCE

NON-TREATED



SOURCE

NON-TREATED

Notes: SOURCE was applied on the left half of this field. Trial administrator noted that the SOURCE applied half was visibly greener sooner than the non-treated part of the field.





SUGARBEET RESULTS



Products

SOURCE DC

Yield Impact

1.2+ tons

Win Rate

67%

Avg ROI/ac

\$72

SOURCE is a proven nutrient efficiency tool for sugarbeets, delivering an average yield lift of 1.2 tons per acre with a 67% win rate and an average ROI of \$72 per acre.

By improving nutrient availability, SOURCE helps sugarbeets push yield without sacrificing sucrose levels. In fact, 71% of trials saw an increase in sucrose levels. Backed by six independent trials, growers are seeing proven performance and reliable returns across various environments.

SUGARBEET COMPARISON PHOTOS Commercial Trials | 2024



SOURCE

NON-TREATED



SOURCE

NON-TREATED



SOURCE

NON-TREATED



POTATO RESULTS



Products

SOURCE DC

Yield Impact
38+ cwt
Win Rate
75%

SOURCE is a proven tool for improving nutrient access and delivery to potatoes. SOURCE provides an average yield lift of over 38 cwt per acre with a 75% win rate.

By optimizing nutrient availability throughout the season, SOURCE helps potatoes maximize their yield potential while maintaining crop quality and consistency in potato size.

POTATO COMPARISON PHOTOS Commercial Trials | 2024



SOURCE

NON-TREATED



SOURCE

NON-TREATED

Notes: In these trials, SOURCE was shown to increase both the uniformity and quantity of potatoes.



CANOLA RESULTS



Products

SOURCE DC

Yield Impact
105 lb
Win Rate
100%
Avg ROI/ac
\$38

SOURCE DC is an easy-to-use tool to improve yields in canola. By increasing access to nitrogen, phosphorus and micronutrients throughout the season, SOURCE delivers significant yield increases.

CANOLA COMPARISON PHOTOS Commercial Trials | 2024



SOURCE™

NON-TREATED



SOURCE™

NON-TREATED



SOURCE™

NON-TREATED



SOURCE™

NON-TREATED



PULSES RESULTS



Products

SOURCE DC

BANNER PEA

Yield Impact

81+ lb

Win Rate

100%

CHICKPEA

Yield Impact

95+ lb

Win Rate

100%

LENTIL

Yield Impact

75+ lb

Win Rate

100%

EDIBLE BEANS

Yield Impact

251+ lb

Win Rate

100%

PULSES COMPARISON PHOTOS Commercial Trials | 2024

SOURCE DC is an easy-to-use tool to improve yields in pulses. By increasing access to nitrogen, phosphorus and micronutrients throughout the season, SOURCE delivers significant yield increases across a wide variety of pulses. SOURCE performed consistently, winning on all trials in this category.

While nutrient efficiency can be an afterthought, growers can see significant returns in pulses by activating beneficial microbes in their soil that deliver more nutrients throughout the season.



Field Information

Prior Crop:

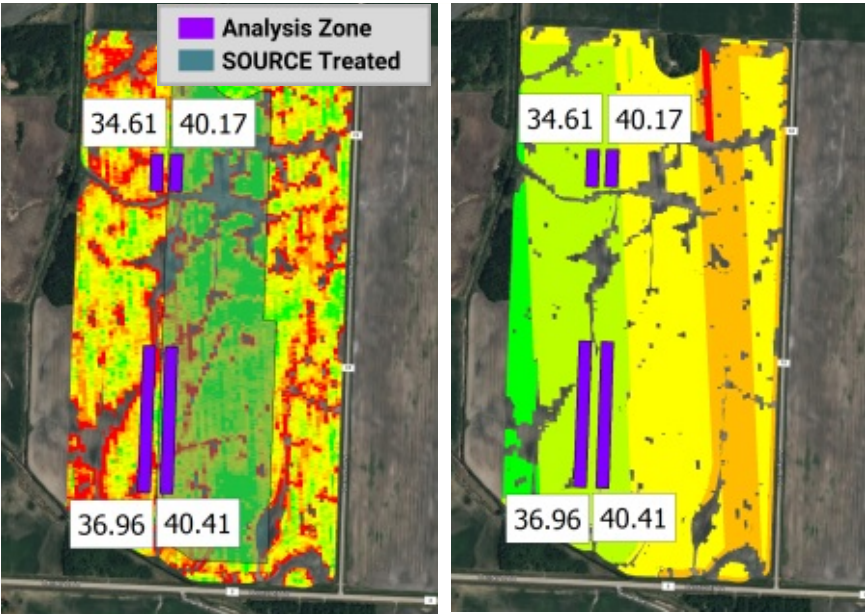
Cover Crop:

Tillage:

Irrigation:None

Manure:

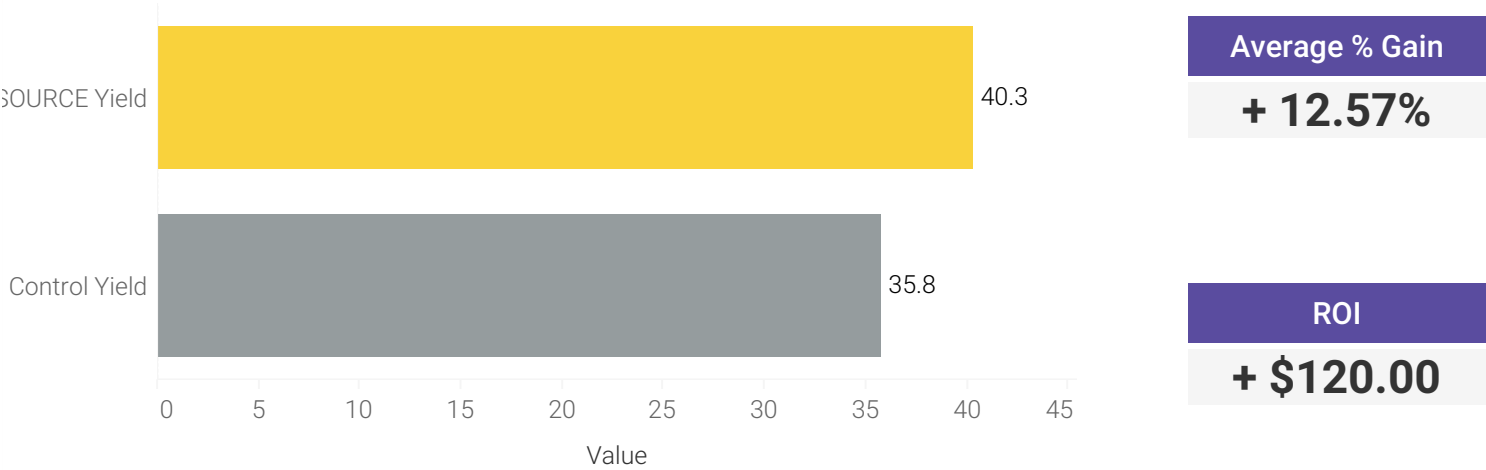
Total N:



Trial Results

Field	Crop	Product	Application Stage	SOURCE Yield	Control Yield	Yield Lift
Kyles	Black Beans	Null	Null	40.3	35.8	4.5

Zones placed to keep harvest date c..



MN

Crop Price	\$30.00
SOURCE Cost	\$15.00

Sound



www.sound.ag
support@sound.ag
[@sound_ag](https://twitter.com/sound_ag)

Sound



© 2025 Sound Agriculture Company. All Rights Reserved. Always read and follow label instructions.