



Rhyl High School, Grange Road, Rhyl. Denbighshire. LL18 4BY



01745 343533



rhyl.high@denbighshire.gov.uk



# YSGOL UWCHRADD Y RHYL RHYL HIGH SCHOOL



Joining our school community





## Croeso i Ysgol Uwchradd Y Rhyl Welcome to Rhyl High School

At Rhyl High School, our vision is to equip our pupils to be **Good, Brave, Happy** and **Healthy** and to give our pupils skills to be lifelong learners and experiences fit for the 21st century enabling them to have successful futures.

To realise this vision, we create a nurturing, safe and aspirational environment for pupils to learn. An environment that celebrates Cymraeg, diversity and respect. This allows our children to be inspired, develop a sense of Cynefin and to be tolerant of and value others.

We aim to equip pupils with skills for life and routes to success so they can achieve our vision of 'Being the Best we can be'.

We care about our pupils, their successes, their difficulties and their wellbeing and work in close partnership with our parents/carers and others to make school life rewarding, stimulating and enjoyable.

Being part of the community in Rhyl is really important to us. It is difficult to put across in writing just how special Rhyl and our school is. The energy on our corridors, the warmth of our relationships and the pride we feel every day of being associated with this school is immense.

*We look forward to meeting and working with you.*

## Key Information

### SCHOOL DAY TIMES

8:40am - 9:40am	<b>Lesson 1</b>
9:40am - 10:40am	<b>Lesson 2</b>
10:40am - 10:55am	<b>Form Time</b>
10:55am - 11:15am	<b>Break</b>
11:15am - 12:15pm	<b>Lesson 3</b>
12:15pm - 1:15pm	<b>Lesson 4</b>
1:15pm - 1:55pm	<b>Lunch</b>
1:55pm - 2:55pm	<b>Lesson 5</b>

### TIMETABLES

Pupils study 50 lessons throughout a fortnight. Each week on their timetables will vary slightly and will be called Week 1 and Week 2. Pupils must check their timetables carefully, be aware of which week it is, and ensure they bring the correct equipment/kit into school.

### LEARNING

At Rhyl High School we have embraced the curriculum reforms and as a result we aim to build a resilient learning community, one which focuses on equipping our pupils to be Good, Brave, Happy and Healthy as they transition through each key stage. We believe it is our responsibility to ensure that what we create in the classroom reflects the reality of the future and in doing so enable progression for all pupils, ensuring successful futures and skills for lifelong learning. Including careers and work related experiences.

***There is Homework Club Monday to Thursday.***

Every child in **Year 7, 8 & 9** is issued with weekly homework, this will take the form of 5 x 30min tasks per week:

- 1 x 30 min task set by English department (Seneca website)
- 1 x 30 min task set by Maths department (Mathswatch website)
- 1 x 30 min task set by Science department (Seneca website)
- 2 x 30 min tasks of independent study on a subject of their choice. There are a variety of recommended websites they can use for this, these are listed in the 'Wider Learning' section of our school webpage.

Every child in **Year 10 & 11** is issued with fortnightly homework, this will take the form of 10 x 1hr tasks per fortnight:

- 1 x 1 hr task set by English department (English Google Classroom)

- 1 x 1 hr task set by Maths department (Mathswatch website)
- 1 x 1 hr task set by Science department (Seneca website)
- 7 x 1hr tasks where it will be down to the pupils to decide what their focus should be, with guidance from all their teachers.

**Some examples of tasks that could be completed are:**

- Attend after-school revision sessions in the various subjects that they study.
- Work through practice GCSE exam papers.
- Some teachers may choose to set work on a subject based 'Google classroom', pupils will be directed to these if that is the case.
- Pupils can use the recommended websites on the 'Wider Learning' section of our school webpage/revision website

This is to support the pupils to get the best GCSE grades that they can achieve and is about the pupils investing in themselves and their futures.

Rhyl High School provides a variety of additional opportunities beyond the formal curriculum.

Rhyl High School will care for and nurture our pupils and show them ways to aim high and build confidence, including through our inclusive additional learning provision areas.

### UNIFORM

The school recognises that the image that its pupils display is important in the ethos created in the school and has a clearly defined uniform and presentation policy, which all pupils are expected to comply with.

**Our uniform stockists are:**

- **Jean Emporium Unit 3 Piazza Shopping Centre Sussex Street Rhyl**
- **Simply Logo Ltd Rear 51 Vale Road Rhyl**
- **First Class Clothes 19 Kings Avenue Prestatyn**

**Please remember:** School Blazer, Jumper, Tie and Skirt can only be bought from the above stockists, but Trousers and Shirts can be purchased from a wide range of suppliers including supermarkets.

### Our school uniform consists of:

- Grey/purple RHS blazer (optional)
- Purple/grey RHS jumper
- School tie - stripe with house colour
- A white shirt that buttons to the neck either long or short sleeve. (NOT aertex)
- Dark grey or black school trousers (NO jeans or leggings)
- A RHS tartan box pleat skirt of an appropriate length
- Dark plain socks, grey knee-high socks, grey or black tights
- All black footwear



### Our P.E. kit consists of:

- RHS Logo T-Shirt
- RHS Logo long sleeve top (optional)
- Plain black - shorts, leggings or training bottoms
- GCSE PE Kit if applicable

### Labelling of clothing

Please ensure that all clothing and possessions are marked with your child's name. The school will not accept responsibility for lost or damaged belongings.

### EQUIPMENT

All students are expected to have the following stationery in school every day:

- Black pens
- Pencils
- Ruler
- Pencil case
- Eraser
- Highlighter

### FOOD IN SCHOOL

#### School dinners

We encourage healthy eating here at school and pupils all remain on site for their lunch. They can choose from a packed lunch or a school meal from our canteen.

#### A typical daily choice can include:

- A range of sandwiches, wraps and rolls
- A pasta pot with a variety of sauces
- Meal of the day
- Pizza

- Chicken strips
- Fresh fruit, yoghurt and fruit juices

We operate a cashless payment system, which allows parents to manage budgets and keep track of food choices. ParentPay is a secure, cloud-based system that allows parents to manage their child's account online using any mobile phone, tablet, laptop or PC. More information can be found on the ParentPay website [www.parentpay.com](http://www.parentpay.com)

### Free school meals

Children of families who are on specific types of benefits may be eligible for Free School Meals. You can find out if your child is eligible through the Denbighshire County Council website. [Denbighshire County Council Website](http://Denbighshire County Council Website)

A free school meals allowance of £2.95 per day is automatically added to your child's ParentPay account, so no child is identified as receiving Free School Meals. Parents can top up their child's account as they wish to provide additional spending money.

### Snacks and drinks

Pupils may bring a healthy snack from home to eat at break time and bring a drink / refillable drinks bottle to school to drink throughout the day. Water fountains are located around the school site.

**\*Energy drinks are NOT permitted in school.**

### BEHAVIOUR

At Rhyl High School we aim to treat young people as individuals, encouraging them through praise and reward. However, there will be occasions when sanctions are necessary to reinforce our high expectations. The aim of sanctions is to educate pupils and to help them to reflect and make better choices moving forward.

The school reserves the right to set detentions at break and lunchtime without prior notice. Prior notice will be given for any detentions after school.

### COMMUNICATIONS

At Rhyl High School we communicate with parents both collectively, e.g. via Newsletters and e mails and individually, e.g. via reports, Parents' Evening and individual calls/meetings where required. Parents can contact school by email at [rhyl.high@denbighshire.gov.uk](mailto:rhyl.high@denbighshire.gov.uk) and can also access the school website: [Rhyl High School Website](http://Rhyl High School Website) and school Facebook page: [Rhyl High School Facebook](http://Rhyl High School Facebook) to keep up-to-date with current developments, check key dates, read newsletters and see photos of recent events and activities.



## ATTENDANCE

### Every day counts...

Rhyl High School is committed to providing all children with the best start in life and works hard to ensure that all children attend school regularly. Reducing absence from school is a key priority for the school, Denbighshire and the Government.

### Why does attendance matter?

Attending School on a regular basis is the key to your child doing well at school and will set them up with good routines for later life and the working world, as well as giving your child the opportunity to:

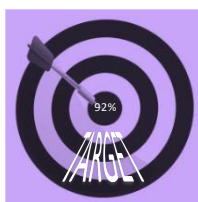
- Make lots of friends and feel included.
- Learn new things and develop many skills.
- Increase confidence and self esteem
- Improve social skills
- Achieve potential and fulfil aspirations.

### 90% attendance

Many people believe that 90% attendance is very good. However, over a whole school year, a pupil with 90% attendance would miss four weeks of lessons. A pupil with 90% attendance would also spend more time away from school over the year than in school. If a pupil's attendance for their whole time at Secondary school was 90% they would have missed 97.5 days of school, that's half a school year.

### OUR SCHOOLS MINIMUM TARGET ATTENDANCE IS:

Above 92%



### Celebrating attendance

We reward good attendance with praise postcards and celebration assemblies. All pupils with a 100% attendance for the month will be entered into a prize draw to win a 'Love to Shop' voucher. In addition, there will be additional rewards for the Form with the highest attendance on a half termly basis. Attendance is also a criteria for an invite to the reward trips.

### Term time holiday

Please be mindful that absence due to a holiday is not, and never has been a parent's/carer's entitlement. If a holiday in term time cannot be avoided due to exceptional

circumstances, an absence request form should be completed. The Headteacher will then decide whether or not to authorise this absence.

### Support with school attendance

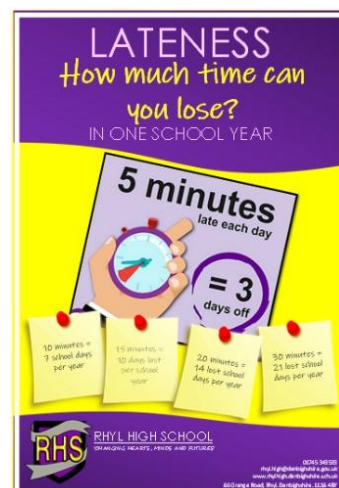
Please remember that if there are reasons why your child is missing school then keep the school informed. If your child is off school, then speak to the school as early as possible on the first day of their absence.

Where possible let the school know in advance of any planned absences e.g. hospital appointments.

Where possible make medical/dental appointments out of school hours.

## PUNCTUALITY

As a school, we are committed to working with you as parents/carers to promote excellent attendance and punctuality for our pupils. Please assist us by ensuring that your child arrives in school **before 8.40am as lessons start at 8.40am**. When a child arrives late to school it can be very disruptive for the child, the teacher and other children in the class. If your child arrives to school late, they will be marked as late on the register. If your child arrives very late i.e. after the register has closed; this an Unauthorised Absence. Detentions will be issued as a sanction for arriving at school late. Persistent late arrival at school may also lead to a Fixed Penalty Notice being issued.



The school will notify whoever has been nominated as the pupil's contact on the day if a child is absent with no reason provided. Please inform the school whenever circumstances change to ensure all contact details are always kept up to date. School will offer every support where there are attendance issues to try and address the difficulties.

## ELECTRONIC APPLIANCES

At Rhyl High School we expect pupils to have mobile phones and other electronic equipment turned off and out of sight during lessons. If phones or electronic devices are seen or heard they will be confiscated for the remainder of the lesson. If a pupil refuses, this is escalated in line with the policy.

## Our Vision, Ethos and Values

### The school's main objective is

#### *'to be the best we can be'*

for ourselves  
for our school  
for our community  
to share and learn  
to experience and grow  
to be motivated, resilient, happy and ready for life

We achieve this by working together, encouraging and rewarding effort and developing good relationships between parents/carers, pupils and staff. Everyone has an important part to play and this agreement sets out the expectations and responsibilities of all parties if the best results are to be achieved.

### ETHOS AND ENVIRONMENT

At Rhyl High School we aim to provide a happy, safe and caring environment for pupils.

We expect pupils to show good manners and consideration for others, including care of the school's property.

At Rhyl High School we provide opportunities for the spiritual, moral, cultural and social development of our pupils. We encourage them to develop a sense of responsibility for their own actions and for the well-being of others.

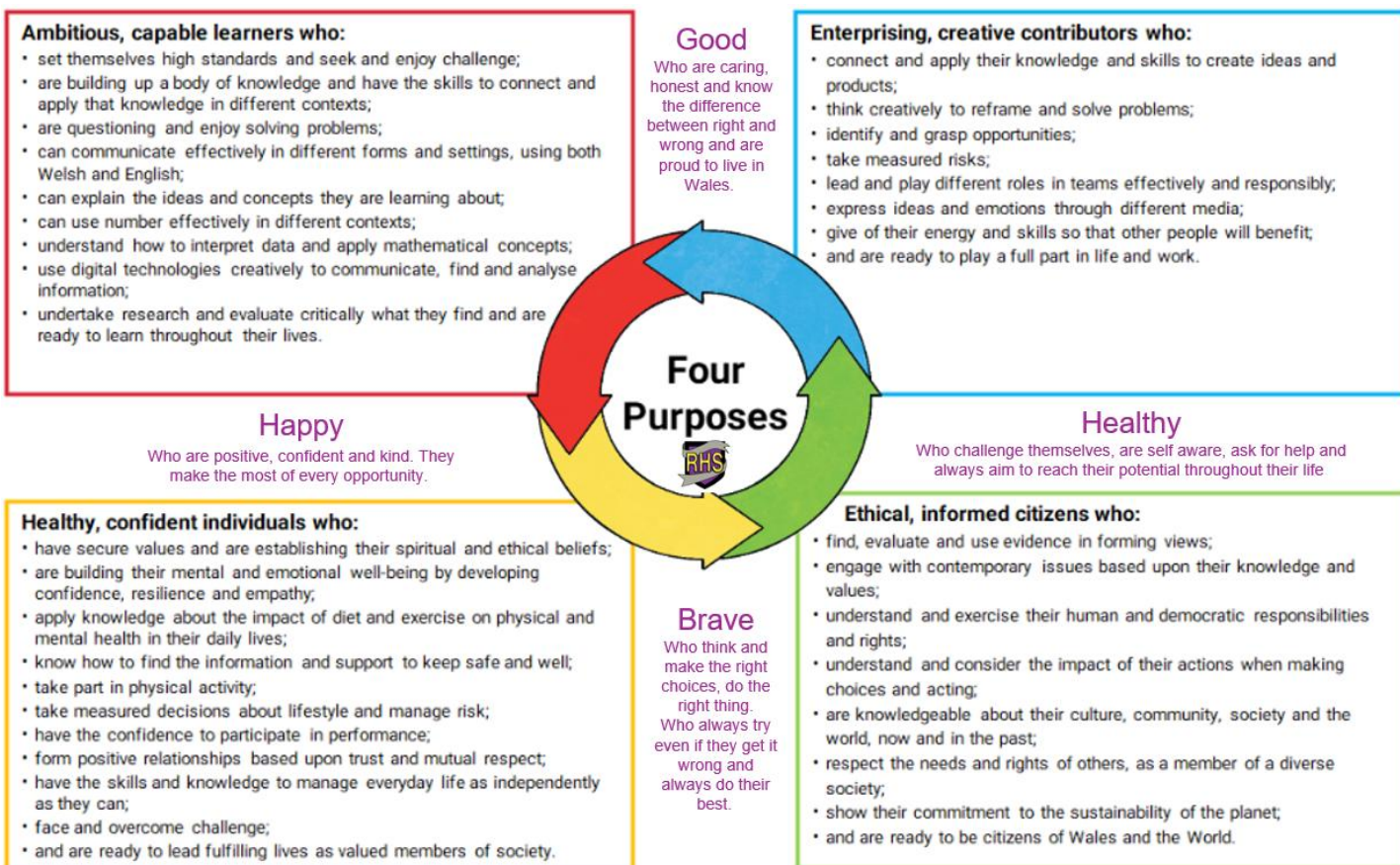
The school have a proactive anti-bullying policy and our broad PSE curriculum educates pupils on matters such as social media, online dangers, healthy relationships and promotes kindness.

### PEDAGOGICAL PRINCIPLES

To support effective teaching and learning, we remain committed to the 12 pedagogical principles, with a particular focus on:

- Encouraging collaboration to enhance shared learning experiences.
- Creating authentic contexts that make learning meaningful and relevant.
- Embedding assessment for learning principles to support progress and reflection.
- Reinforcing cross-curricular skills in literacy, numeracy, and digital competence, while providing opportunities to apply them in practice.
- Supporting social and emotional development and fostering positive relationships to create a nurturing learning environment.

This approach ensures that pupils are engaged, challenged, and equipped with essential skills for their future.





# Rhyl High School



## Being the best we can be

**For ourselves  
For our school  
For our community**

**To share and learn  
To experience and grow  
To be motivated, resilient, happy and ready for life**

WE ARE  
not perfect human beings,  
NOR DO WE HAVE TO  
pretend to be,  
BUT IT IS NECESSARY  
FOR US TO BE THE  
best version of ourselves  
WE CAN BE.



*We are proud to be welsh and  
promote a culture and ethos where  
using every day welsh is encouraged  
and celebrated. We have an active  
'Criw Cymraeg' who act as  
ambassadors for welsh language.*