

Every Day Counts...

Rhyl High School is committed to providing all children with the best start in life and works hard to ensure that all children attend school regularly. Reducing absence from school is a key priority for the school, Denbighshire and the Government. The majority of parents/carers at Rhyl High School ensure that their children attend school regularly.

Why should my child attend school every day?

100% = Best chance of success!

Poor attendance will impact on learning. Very poor attendance has a significant impact on learning.

At Rhyl High School:

- Almost 75% of pupils who's school attendance was at, or above, the minimum expected of 92% gained 5 or more GCSEs at A* to C grade
- Pupils with an attendance at or above the minimum expected of 92% were more than 5 times more likely to get 5 or more GCSEs including English and maths at A* to C grade
- All pupils who gained 5 x A*-A grades had attendance at or above the minimum expected of 92%

TACKLING ABSENCE.....

Increases children and young people's opportunities

Increases children's attainment and

Support with School Attendance

Please remember that if there are reasons why your child is missing school then keep the school informed. If your child is off school, then speak to the school as early as possible on the first day of absence. Please contact your child's Head of year to discuss any issues or concerns impacting on attendance,

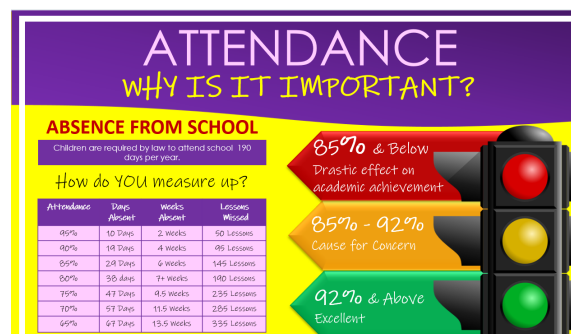
If no notification of absence is received, the school will contact parents/carers via the absence notification and/or a subsequent letter to find out why.

Where possible let the school know in advance of any planned absences e.g. hospital appointments.

Where possible make medical/dental appointments out of school hours.

Parents/carers should provide reasons for absences and the school must decide whether or not they authorise in line with Government Guidelines

Your child is expected to be in school for 189 days an academic year with 175 days off due to weekends and school holidays.



School Attendance



2025-26

Information for Parents and Carers

Why does attendance matter?

Attending School on a regular basis is the key to your child doing well at school and will set them up with good routines for later life and the working world, as well as giving your child the opportunity to:

- Make lots of friends and feel included.
- Learn new things and develop many skills.
- Increase confidence and self esteem
- Improve social skills
- Achieve potential and fulfil aspirations.

90% Attendance

Many people believe that 90% attendance is very good. However, over a whole school year, a pupil with 90% attendance would **miss four weeks of lessons**.

A pupil with 90% attendance would also spend more time away from school over the year than in school.

If a pupil's attendance for their whole time at Secondary school was 90% they would have missed 97.5 days of school, that's half a school year.

Absence and the Law

As a parent/carer you are committing an offence if you fail to make sure that your child attends regularly, even if they are missing school without your knowledge. This could lead to the initiation of legal proceedings

MINIMUM TARGET ATTENDANCE FOR 2025-26 is 92%



Celebrating Attendance

We celebrate and reward good and improved attendance with praise postcards and celebration assemblies. All pupils with a 100% attendance for the month will be entered into a prize draw to win a 'Love to Shop' voucher. In addition, there will be additional rewards for the Form with the highest attendance on a half termly basis.

Term Time Holiday

Family holidays should take place during the school holiday dates. These are published two years in advance. Please be mindful that absence due to a holiday is not, and never has been a parent's/carer's entitlement. If a holiday in term time cannot be avoided due to exceptional circumstances, an **absence request** form should be completed. The Head teacher will then decide whether or not to authorise this absence. Parents/carers may receive a Fixed Penalty Notice for an unauthorised holiday in term time.


Arriving late to school

When a child arrives late to school it can be very disruptive for the child, the teacher and other children in the class. If your child arrives to School late, they will be marked as late on the register. If your child arrives very late i.e after the register has closed; this is an Unauthorised Absence. Persistent late arrival at school may also lead to a Fixed Penalty Notice being issued.

LATENESS

How much time can you lose?

IN ONE SCHOOL YEAR




10 minutes = 7 school days per year

15 minutes = 10 days lost per school year

20 minutes = 14 lost school days per year

30 minutes = 21 lost school days per year



RHYL HIGH SCHOOL

"CHANGING HEARTS, MINDS AND FUTURES"

01745 343533

rhyl.high@denbighshire.gov.uk

www.rhylhigh.denbighshire.sch.uk

86 Grange Road, Rhyl, Denbighshire, LL18 4BY