

i'll
remember
you[®]



Clement L.
PANTALONE
Funeral Home, Inc.

**SERVING OUR COMMUNITY
SINCE 1971**

Ph 724.837.0020 pantalone.com

409 West Pittsburgh St. Greensburg, PA 15601

Natale N. Pantalone, Supervisor

Sharing memories *and telling stories* of a special life

Saying Goodbye

It's never easy, but saying goodbye is a natural and healthy part of the grieving process.

At our funeral home, this can take place in a number of ways. From a more traditional ceremony joined by family and friends, to a private, meaningful service with your immediate family.

Regardless of how you want to say goodbye, our professional staff is ready to serve.

Sharing the Story

A caring parent, a lifelong friend - every life tells a story.

Our team will help you share that story in a unique and appropriate way. We believe in celebrating the life of the individual by recognizing how they touched the lives of others. This is the story that we all have to share.

Cremation Choices

Choosing cremation offers several choices for service and memorialization. The following considerations will help you determine the type of event that would be most meaningful to you, your family, and friends.

- *Do you prefer to offer friends and extended family the opportunity to say goodbye and offer their love and support with a public viewing or memorial?*
- *Do you prefer to conduct ceremonial services at a church or place of worship?*
- *If family and friends are coming from a great distance, do you prefer to arrange a memorial service following the cremation?*

Whatever your preference, our staff will work one-on-one with you to create an appropriate tribute. To help simplify the planning and arrangement process, the offerings described on the following pages represent the most popular choices of our families who elect cremation. Each of these packages offer our Signature Service Commitment.

Choosing a Final Resting Place

Following the service and the cremation process, there are several options for choosing a peaceful, final resting place, including:

- H** Home - Keeping in your private residence
- N** Niche - Designated place in a church or mausoleum
- B** Burial - Traditional placement in a cemetery
- S** Scattering - Spread in a special location



the Community Gathering

A personalized service with traditionally planned, beautiful events to commemorate your loved one.

Package E Service Includes:

- Visitation at our Funeral Home
- Use of facilities, equipment and staff for up to four hours day before funeral service
- Funeral Service
- Memorial package
- Transfer of remains to Funeral Home
- Embalming
- Preparation of remains
- Crematory fee
- 2 PA death certificates
- Allowance for permanent urn from tier 3 selections
- Excludes Committal service and automotive equipment

Price: \$8,485

We can accommodate large or small groups and arrange both traditional and non-traditional services.



the Evening Service with Visitation

An evening service to
honor a loved one.

Package F Service Includes:

- Visitation at our Funeral Home
- Use of facilities, equipment and staff for viewing from 4:00 pm until time of services at 7:30 pm
- Memorial package
- Transfer of remains to Funeral Home
- Embalming
- Preparation of remains
- Crematory fee
- 2 PA death certificates
- Allowance for permanent urn from tier 3 selections
- Excludes Committal service and automotive equipment

Price: \$7,485

We can accommodate large or small groups and arrange
both traditional and non-traditional services.



the Single Day Service with Visitation

A single day service to
honor a loved one.

Package G Service Includes:

- Visitation at our Funeral Home
- Use of facilities, equipment and staff for one (1) hour viewing before funeral ceremony or service
- Memorial package
- Transfer of remains to Funeral Home
- Embalming
- Preparation of remains
- Crematory fee
- 2 PA death certificates
- Allowance for permanent urn from tier 3 selections
- Excludes Committal service and automotive equipment

Price: \$6,985

We can accommodate large or small groups and arrange
both traditional and non-traditional services.



the Friends & Family Goodbye

A memorial service for family and friends to share memories and show their support.

Package H Service Includes:

- Memorial / Funeral service in our funeral home
- Use of facilities, equipment and staff for up to 1.5 hours before service in Funeral Home
- Memorial package
- Transfer of remains to Funeral Home
- Preparation of remains
- ID viewing in our Funeral Home
- Crematory fee
- 2 PA death certificates
- Allowance for permanent urn from tier 3 selections
- Excludes Committal service and automotive equipment

Additional Options:

- *Cardboard Cremation Case – \$95.00
- *Dressing – \$295.00
- *Conduct Committal Service at cemetery – \$495.00
- *Additional gathering per 2-hour period on same day – \$600.00
- *Additional gathering for three hours on day before service – \$1,400.00

Price: \$4,900.00

Additional Cremation options available on page 10

*We can accommodate large or small groups and arrange
both traditional and non-traditional services.*



the Private Informal Goodbye

A personal and private opportunity for your immediate family to say goodbye.

Package I Service Includes:

- ID viewing in our Funeral Home
- Use of facilities, equipment and staff
- Transfer of remains to Funeral Home
- Preparation of remains
- Crematory fee
- 2 PA death certificates
- Preparing and submitting of death notices and obituaries
- Notify and assist with Insurance Claim forms, Pension forms, Social Security, Retirement forms
- Memorial Package
- Allowance for permanent urn from tier 3 selections
- Excludes Committal service and automotive equipment

Additional Options:

- *Cardboard Cremation Case – \$95.00
- *Dressing – \$295.00
- *Conduct funeral service off site with urn – \$895.00
- *Committal service at cemetery on separate day - \$495.00

Price: \$3,300.00

Additional Cremation options available on page 10

Private Goodbye's are limited to a small gathering of immediate family for a brief period of time.



the Direct Cremation

Package J Service Includes:

- Photo identification of deceased
- Limited use of facilities, equipment and staff
- Transfer of remains to Funeral Home
- Preparation of remains
- Crematory fee
- 2 PA death certificates
- Cardboard cremation case

Additional Options:

*Home Removal - \$275

**Funeral invoice must be paid in full at time of arrangements by cash, certified check, debit card or credit card (3% documentation fee for swipe/chip card / 4% manual entry credit card)

***Any additional request revert to Package I (Basic Cremation)

Price: \$2,295.00

Additional Cremation options available on page 10

*We can accommodate large or small groups and arrange
both traditional and non-traditional services.*

Additional Cremation Options

ID Viewing Options

ID Viewing of unembalmed remains

- Positive ID from photo, Package J
- Positive ID from actual viewing of the deceased by only 1 person or photo
- Package H or I

ID Viewing of embalmed remains added to Package H, I or J

- Private immediate family viewing for 20 - 30 minutes by up to 10 people
- No service
- Limited staff
- Use of Chaise Bed Viewer ID

Embalming ID Dressing

Chaise Bed Viewer Insert

\$1,345

The next viewing option would be Package G

Funeral Service with Remains Prior to Cremation

These options can be added to Package I for those families wishing to have a funeral service in the funeral home or off site place of worship with their loved one prior to the cremation process. The body is not embalmed and placed into refrigeration for up to 48 hours. They are then placed in a rental casket.

Additional refrigeration is available for \$80 per day if needed.

- Conduct funeral service off site with rental casket and hearse.... \$1,595.00
- Conduct funeral service in our funeral home with rental casket \$1,995.00

Comparison of Available Selections

Description	E	F	G	H	I	J
24 Hour/365 day availability	X	X	X	X	X	X
Transfer of deceased to funeral home	X	X	X	X	X	X
Consultation and arrangements with family	X	X	X	X	X	X
Securing and recording vital statistics	X	X	X	X	X	X
Preparing & filing necessary permits and authorizations	X	X	X	X	X	X
Notify Social Security	X	X	X	X	X	X
Holiday Grief Program	X	X	X	X	X	X
Crematory Fee	X	X	X	X	X	X
2 PA Death Certificates	X	X	X	X	X	X
Obtain Veteran Flag	X	X	X	X	X	X
Preparing and submitting death notices and obituaries	X	X	X	X	X	
Notify and assist with Insurance, Pension and Retirement forms	X	X	X	X	X	
Notify and assist with Social Security Appointment	X	X	X	X	X	
Photo Prayer Cards	X	X	X	X	X	
Laminated memorials (cards, notices)	X	X	X	X	X	
Customized Thank you Cards	X	X	X	X	X	
Assist with Veterans Benefits	X	X	X	X	X	
Allowances for Tier 3 Urn Selection	X	X	X	X	X	
Arrangements with cemetery and clergy	X	X	X	X		
Use of staff for viewing/service	X	X	X	X		
Photo Boards / Memorial Photo DVD	X	X	X	X		
Handling, listing, arrangements of floral pieces	X	X	X	X		
Personalized Register Book	X	X	X	X		
Crucifix/Cross	X	X	X	X		
Embalming	X	X	X			
Restoration, cosmetics, dressing and casketing	X	X	X			

Rental Casket Selections



Norwood (Rental)

Oak
Satin Medium Tutone Timber /
Shaded Finish Rosetan Crepe
Interior
Price: \$1,600



Barrett (Rental)

Solid Cherry
Gloss Russet Cherry Finish
Ivory Velvet Interior Price:
\$1,900



Casket Selections



Longley
Carte Veneer
Medium Cherry Finish
Rosetan Crepe Interior
Price: \$2,400



Clivedon Poplar Satin Medium
American Maple Finish

Rosetone Crepe Interior
Price: \$2,800



Wilton
Poplar
Gloss Dark Walnut Finish
Rosetan Crepe Interior
Price: \$3,600



[Everlasting - 71214271](#)
Cherry urn with raised panels.
Engraving options available.



[Fidelity Roma - 71007334](#)
Cast bronze urn in simple design.
Shown w/ optional personalization.



[Expressions 4x6 Photo Urn - 71085971](#)
Cherry photo urn comes as shown or with your choice of engraving



[Alicante - 3AAA6](#)
Alabaster urn in shades of purple.
Engraving options available.



Venice - 3TB100

Brass urn with pewter finish in classic design



Avon Cherry - 3WW100

Cherry hardwood urn with natural finish



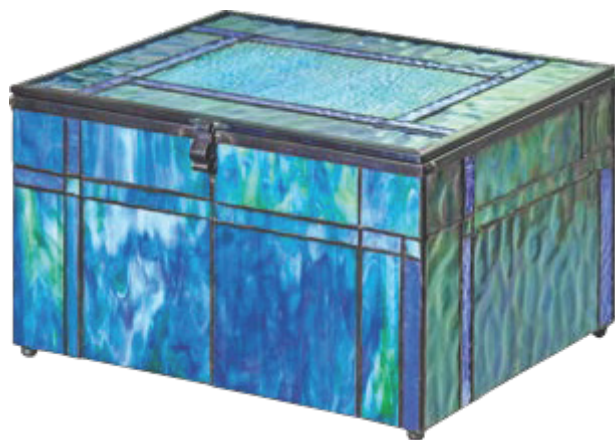
Forest Haze - 71009010

Urn made of natural stone with unique color and pattern.
Charm not included.



Waterlily Dragonflies - 71210448

Hand-painted composite urn with dragonfly scene



H
N
B
S

Seaside - 3GMBBLU

Handmade stained glass memory chest in shades of blue



H
N
B
S

Green Marble - 3WM450

Cultured marble urn in green.
Engraving options available.



H
N
B
S

Mother of Pearl - 71009855

Brass urn with natural mother of pearl.
Charm not included.



H
N
B
S

Athens Pewter Blue - 71007338

Brass and pewter urn constructed from high grade materials



Home



Niche



Burial



Scattering



Personalize with engraving

Memorial Jewelry



Cross w/ Clear CZ
Stone 3EMJ11



Open Teardrop w/
Clear CZ Stone
71085935



Remembrance Tree
71210429



Toggle Closure Charm
Bracelet with Heart w/
Clear CZ Stone
71085964



Plain Heart*
3EMJ12



Carbon Fiber Cross
11031544



Carbon Fiber Bracelet
11031540 – 8.75" L X .5" W
71214467 – 7.75" L X .5" W

Personal Expressions™ Jewelry



Stainless Steel Pocket Knife
w/o Chamber
71204978



Stainless Steel Round Ring
w/ Chamber* 71204949



Sterling Silver Petite Dog Tag
w/ Chamber*
71204898

*Jewelry holds small amounts of cremated remains.

Celebration of Life Services

Professional Services

24 Hour/365 day availability to respond to any request you have for service

Transfer of deceased to funeral home

Embalming

Restoration, cosmetics, coordination of hairdresser, dressing and casketing

Services of funeral director and staff:

- Consultation and arrangements with family
- Securing and recording vital statistics
- Securing, preparing and filing necessary permits, authorizations, and notices
- Arrangements with cemetery, air carrier, clergy
- Preparing and submitting death notices and obituaries
- Notify and assist with Insurance Claim forms, Pension forms, Social Security, Retirement forms and Veterans
- Provide work, school and airline releases or attendance verifications
- Arrange for a procession of autos to the church and /or cemetery and luncheon

Use of equipment and staff for committal service at cemetery

Acceptance and arrangements of floral deliveries

Flower delivery and/or disposition

Arrangements with organizations for vigils/prayer services or other services

Holiday Grief Program

Laminated memorials (cards, notices)

Use of Funeral Home music and PA system

Notary Services

Website hosting of obituary and condolence register page

Personalized Celebration of Life Service

Use of Photo Boards

Memorial Photo DVD

Taping of funeral services in the funeral home

Facilities

Use of facilities and staff for viewing

- Supervision of visitation
- Valet parking
- Handling, listing, arrangements of floral pieces
- Provide coffee and tea service
- Use of lounge area
- Make contribution envelopes to charities available
- Supervision of funeral ceremony

Motor Equipment

Lead vehicle

Hearse

Family car (14 passenger)

Flower car/utility vehicle

Escort vehicle

Memorial Package

Crucifix/Cross

Personalized Register Book

Personalization of Prayer cards with photo

Customized Thank you Cards



your purchase **CAN HELP** change a life



With the purchase of a Matthews Aurora™ Funeral Solutions casket, a donation is made to the Matthews Children's Foundation.

The Foundation then awards grants to non-profit organizations whose sole purpose is to support and ensure a brighter future for children in every community.



i'll
remember
you®

Prices are effective as of January 1, 2026
and are subject to change without notice.