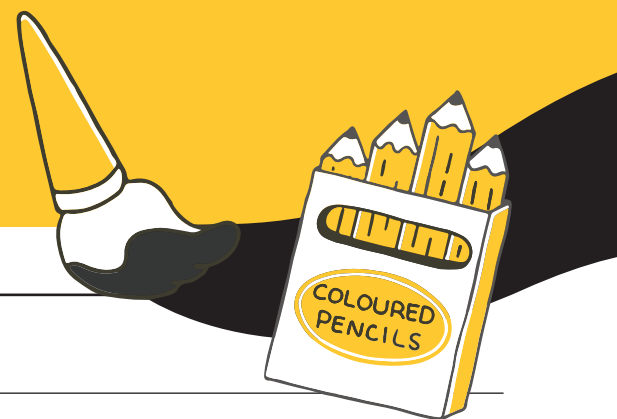




# Classroom activity for Years 7-8



## R U OK? art activity

|  |   |
|--|---|
| <b>Duration</b>                        | One-hour lesson; ideally completed over 2 lessons.  |
| <b>Learning intention</b>              | Students consider what connection means to them.  |
| <b>Activity focus</b>                  | Students think about connection and how they connect with the people in their lives.<br>Students express these thoughts about connection through the creation of a piece of art.  |
| <b>Resources required</b>              | <ul style="list-style-type: none"> <li>○ Pen and paper for brainstorm.</li> <li>○ Materials to create student artwork; all types of mediums will be accepted in the R U OK? Art Competition, excluding videos, three-dimensional sculptures, and use of AI.</li> </ul>  |
| <b>Curriculum and wellbeing themes</b> | <ul style="list-style-type: none"> <li>○ Help-giving</li> <li>○ Personal and social skills</li> <li>○ Relationships</li> </ul>  |
| <b>Success criteria</b>                | <ul style="list-style-type: none"> <li>○ Identify what connection means to me.</li> <li>○ Consider the ways I currently connect with the people in my life, including my friends.</li> </ul>  |
| <b>Activity description</b>            | <p><b>Part 1 – Introduce the R U OK? Student Art Competition.</b></p> <p>Explain to students that R U OK? is running a National Art Competition for year 7 and 8 students, which involves creating an artwork that answers the question ‘what does connection mean to you?’</p> <p><b>Part 2 – Silent Brainstorm</b></p> <p>Ask students to think about what artwork they will create to address this question.<br/>Encourage them to consider:</p> <ul style="list-style-type: none"> <li>○ Why is connection important?</li> <li>○ How do you connect with the people in your life?</li> <li>○ Who do you feel connected to? Encourage students to think broadly and consider school friends, family members, pets, neighbours, people they play sport with etc.</li> <li>○ When do you feel most connected with yourself?</li> </ul> <p><b>Part 3 – Creation of individual student artwork</b></p> <p>Students work individually, using materials and mediums of their choosing, to create an artwork that answers the question ‘what does connection mean to you?’</p> <p>After all artworks are complete, encourage students to share what they have created with the class.</p> |
| <b>Reflection question</b>             | <ul style="list-style-type: none"> <li>○ Who are you going to connect with this week?</li> </ul>  |
| <b>Supporting resources</b>            | <div>  <p>Isaac Humphries<br/>R U OK? ambassador &amp; professional basketball player<br/>and a professional basketball player.</p> <p><u><a href="#">Tips for being a good friend, with Isaac Humphries</a></u></p> </div> <div>  <p><u><a href="#">#FriendBetter with R U OK?</a></u></p> </div>   |