



**KINSMEN
HOMES**
Built on Family Values

The Morgan

1,842 sq. ft.

3 or 4 bedroom, 2 bath

Elevation Option A



FRONT ELEVATION "A"



FRONT ELEVATION "A" w/ OPT STONE



FRONT ELEVATION "A" w/ SIDE EXTENSION



FRONT ELEVATION "A" w/ OPT 3 CAR

Prices, plans, dimensions, features, specification, materials and availability of homes or communities are subject to change without notice or obligation. Illustrations are artist depictions only and may differ from completed improvements. Not all options available in all communities. All Rights Reserved.



**KINSMEN
HOMES**
Built on Family Values

The Morgan

1,842 sq. ft.

3 or 4 bedroom, 2 bath

Elevation Option B



FRONT ELEVATION "B"



FRONT ELEVATION "C" W/ OPT STONE



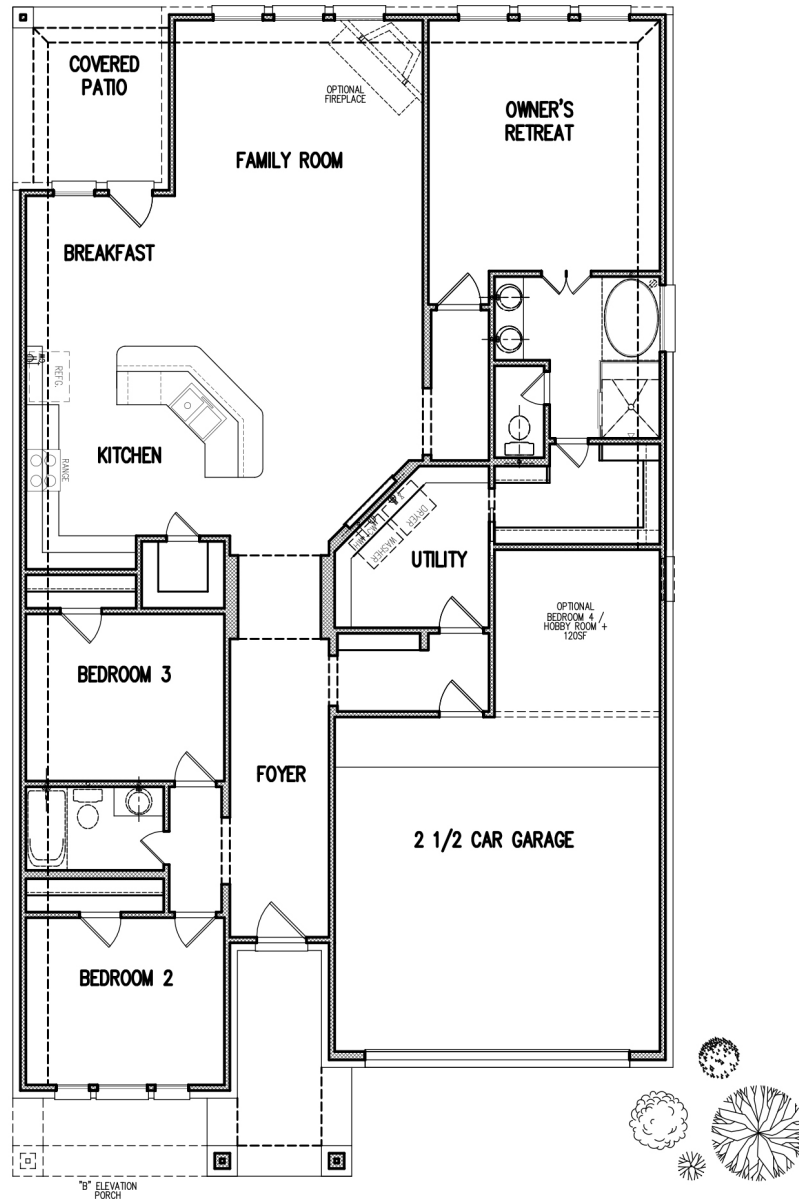
FRONT ELEVATION "C" W/ OPT SIDE EXTENSION



FRONT ELEVATION "C" W/ OPT 3 CAR

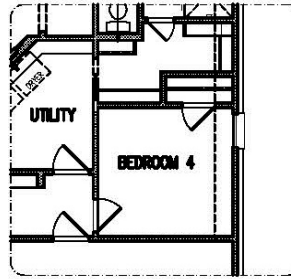
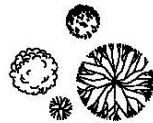
Prices, plans, dimensions, features, specification, materials and availability of homes or communities are subject to change without notice or obligation. Illustrations are artist depictions only and may differ from completed improvements. Not all options available in all communities. All Rights Reserved.

The Morgan

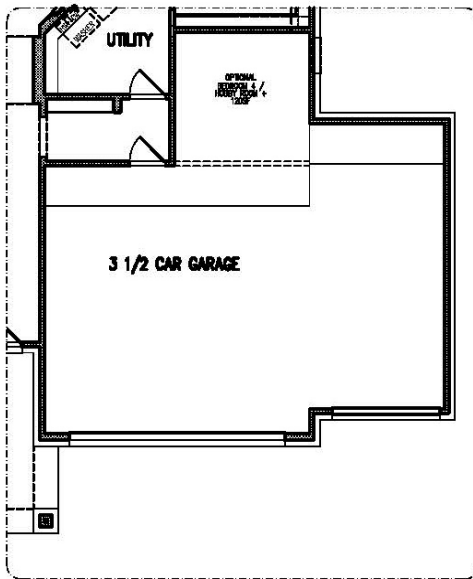
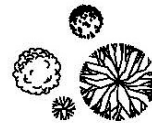


Prices, plans, dimensions, features, specification, materials and availability of homes or communities are subject to change without notice or obligation. Illustrations are artist depictions only and may differ from completed improvements. Not all options available in all communities. All Rights Reserved.

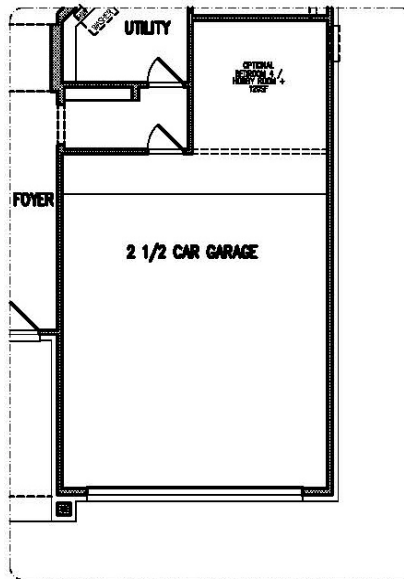
The Morgan



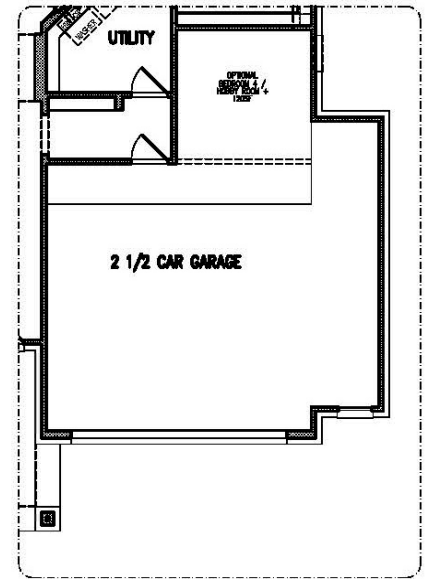
OPTIONAL BEDROOM 4/HOBBY ROOM



OPTIONAL 3 1/2 CAR GARAGE



OPTIONAL 5' FRONT EXTENSION



OPTIONAL 5' SIDE EXTENSION