



THE EPIPHANY OF THE LORD

"WHERE IS THE NEWBORN KING OF THE JEWS? WE SAW HIS STAR
AT ITS RISING AND HAVE COME TO DO HIM HOMAGE." MATTHEW 2:2

PARISH SCHEDULE & DIRECTORY

RECTORY OFFICE

Monday—Friday 10:00 am—2:00 pm

ADDRESS: 1 Pineswamp Road
Ipswich, MA 01938

TELEPHONE: 978-356-3944

FAX: 978-356-9592

WEEKEND MASS

Saturday 4:00 p.m.

Sunday 9:00 a.m. & 11:00 a.m.

WEEKDAY MASSES

**Monday, Tuesday, Thursday, Friday and
Saturday 9:00 a.m.**

There is no daily Mass on Wednesday

GUIDE FOR IN-PERSON WORSHIP

The requirement for Masks has been lifted. However, for those who are not vaccinated or are more comfortable wearing a mask, please continue to. We also ask those who attend to social distance from those not in your household when possible.

If for any reason these directives and guidelines need to be increased by the CDC, we will update and post them to our website www.ipswichcatholics.org.

Thank you for your understanding and cooperation.

SACRAMENTS

RECONCILIATION

SATURDAYS 3:00—3:45 PM or by appointment.
Please wear a mask when in the confessional.

BAPTISM

If you are planning a baptism in the future, please call the rectory to make arrangements 978-356-3944.

MARRIAGE

If you are an engaged couple, please call Fr. Tom directly at least 6 months prior to the intended date.

RCIA & FAITH FORMATION

Questions regarding current, upcoming programs and/or sacramental programs available at our parish, please contact rectory at 978-356-3944.

STAY UP TO DATE THROUGH EMAIL

When important information is sent to registered parishioners, it is conveyed through email. Please let us know when your email has changed. Thank you.

CONTACT INFORMATION

PASTOR: Rev. Thomas E. Keyes

PRIEST IN RESIDENCE: Rev. John G. Kiley

OFFICE MANAGER: Joanne DiNatale

978-356-3944 rectory@ipswichcatholics.org

RELIGIOUS EDUCATION COORDINATORS:
978-356-3944 EXT. 28

Elementary: Gabriela Twaalfhoven
gtwaalfhoven@ipswichcatholics.org

Middle and High School: Elisa St. Clair
elisastclair@ipswichcatholics.org

MUSIC MINISTER: John Maher
978-500-6789 johnmaheripswich@gmail.com

MAINTENANCE: Branden Soroka

FINANCE COUNCIL CHAIR: Michael Nelligan

PARISH MINISTRY CONTACTS

CATHOLIC WOMEN'S CLUB

Bonni Berkowitz, President | 617-549-2744
berky000@gmail.com

MUSIC MINISTRIES

John Maher | 978-500-6789
johnmaheripswich@gmail.com

SAINT VINCENT DE PAUL

James McCarthy, President | 978-992-6151

KNIGHTS OF COLUMBUS

James Foley | 978-360-2799

For more information, contact the parish office.

Consider sharing your gifts and talents.

NEW TO OUR PARISH?

If you are new to Our Lady of Hope, please introduce yourself to Fr. Tom following Mass. To formally register with our parish, contact the rectory office at 978-356-3944.



Let the Priest know if you would like to use a hearing assist box before Mass. If you have any questions, please call the rectory at 978-356-3944.

Thank You

MASS INTENTIONS

Saturday, January 7

4:00pm—Weekend Mass

Sunday, January 8

9:00am—Weekend Mass

11:00am—Weekend Mass

Monday, January 9

9:00 am—Weekday Mass

Tuesday, January 10

9:00 a.m.—Weekday

Wednesday, January 11

No Daily Mass on Wednesdays

Thursday, January 12

NO DAILY MASS

Friday, January 13

NO DAILY MASS

Saturday, January 14

9:00 am—Ada Subrizio 49th Anniversary

4:00pm—Weekend Mass

Sunday, January 15

9:00am—Weekend Mass

11:00am—Earl & Barbara Parker

ONLINE GIVING

We offer this convenience to our parishioners and visitors. Online giving is an easy and secure way to make contributions to support our parish. You may contribute using direct withdrawals (ACH) or credit cards. Visa, MasterCard and American Express are all accepted.

To contribute using online giving, simply visit our website: ipswichcatholics.org and follow the instructions. For assistance, call the rectory.

Remember God's will in yours...

When you leave a bequest to the Church in your will or estate plan, you express your commitment to the future of your parish. You also return some of the blessings God gave to your life and leave an eternal message of what is important to you. Please consider including Our Lady of Hope Parish when preparing your will.

For more information contact Fr. Tom Keyes or call the rectory office at 978-356-3944 or email: rectory@ipswichcatholics.org



PRAYER REQUESTS

WE ASK PARISHIONERS TO PRAY...

† For all those who are sick, especially Katelyn Caruso, Denise Polli, Gerrie O'Brien, Melissa Faino Palelli, Mikey Grover, Kyrsten Weber, Arline Thornell, Irene Stackpole, Connie Donovan, Connie, Christine & John Vallis, Maria Masse, Ed Manning, Lou Best, Patricia Foley, J. P. Quinn and Virginia Morin and all those infected with the Covid-19 virus.

† For the children attending our Faith Formation classes.

† For those who work on front line with Covid-19 virus

† For those who work and live in war-torn countries, especially in the Ukraine

† For Barbara Berkowitz and all the deceased members of our parish

† For the safety and good health of all missionaries

† For all who serve our country in the Armed Forces

† For peace in our world, especially Ukraine.

† For the unborn children

† For all those affected by natural disasters

PLEASE NOTE:

In order to keep our prayer list current, names will remain on the list for four weeks. Please resubmit by contacting the rectory office. Names should be submitted by the individual or immediate family member.



DONATIONS:

OFFERTORY: \$ 7,682.05 { DEC. 18 & JAN. 1 }

CHRISTMAS CLERGY: \$8,454.00

THANK YOU TO ALL WHO GENEROUSLY SUPPORT OUR PARISH.

GRAND ANNUAL COLLECTION

The 2022-2023, Grand Annual Collection is well underway. If you did not receive a letter, there are extras on the exit tables of the Church and rectory porch. We are grateful to all who have already generously contributed to this important collection. As of this past weekend we have received \$91,944.64 in donations.

The Grand Annual is a vital collection for the financial needs of the Parish. The success of our Capital Campaign allowed us to meet the expenses which were incurred from all the renovations. The Grand Annual will help us to continue to take care of the additional costs of running the Parish and keeping up with necessary repairs.

FROM THE PASTOR



The Church and the world have celebrated the Nativity, the Birth of Christ, Christmas for over two thousand years. It has been celebrated in many ways throughout the centuries. The different cultures, the differing traditions, have really brought us what and how we celebrate in our own times. Like Life, it has continually changed and will change as time goes on. Many feel that my way of celebrating Christmas is the right way, your way is wrong. Often times this leads to disagreement, even conflict.

The often heard saying "Put Christ back into Christmas" is nice, but I think misunderstood. Where does it want us to put Christ back into? Into a simple greeting, into the name of a celebration, the name of a holiday weekend? Personally I think it is not into a word, Christmas. So where do we put Christ? Into your own life, into your own heart, into your own soul! It is putting Christ back into yourself! That is how we celebrate Christmas. Customs, cultures and traditions change and will change, but one unchangeable reality is Christ. That is what we celebrate.

Now that the "religious" part of this note is done let me talk about something coming in the New Year, Collaboration, the joining of Our Lady of Hope Parish in Ipswich with St. Paul Parish in Hamilton/Wenham. Why and When?

The decline of the number of priests and other religious in the Archdiocese, the lower number of people in the Parishes make it a question of reality! The joining of two or three Parishes into one Collaborative makes it stronger with strength to go forward in our present changing world.

You will be hearing more about the Collaborative in the coming months. But I do want to mention a few realities of the Collaborative process that is necessary.

When the process begins, the Pastor of the Parish is asked to resign. There will be a new Pastor and Team in the Collaborative. Remember! One Pastor for Our Lady of Hope and St Paul. Who that will be has not been determined. Any priest of the Archdiocese could apply for our Collaborative or one of the many others going through the same process. He will not be named until late March or April, so don't ask, we do not know.

I was asked, as were the other Pastors going through the Collaborative process, to offer my resignation as Pastor. I have done as the Archbishop requested, it will take effect on June 1, 2023. As for my future, it may be the time for me to retire, but that remains a personal decision in the future.

As we prepare to enter a New Year, 2023, I personally view all the above as a good thing. We always need new beginnings to give us strength and hope. Together we should continue to follow the example of Our Lady of Hope, trust in the Lord who leads us into the future.

Merry Christmas and Hopeful New Year!

Fr. Tom Keyes



THE BEAUTIFUL CHRISTMAS FLOWERS
ON THE ALTAR WERE DONATED
IN LOVING MEMORY OF:

FRANK AND JOAN NOLAN
ELIZABETH AND HAROLD BALCH
BARBARA BALCH INGARI
PETER K. PRYBOT
ELEAZER CARTER RICHARDSON
O'NEILL FAMILY
BENEDETTO FAMILY
EMILY DRISCOLL
FRANK ANTONUCCI
JACQUELINE ZABRISKIE GANNON
HARRY AND COSMIA TAKIS
ED AND LOUISE KEENAN
GARVIN FAMILY
BOUTCHIE FAMILY
FRANCIS FAMILY
CHARLES L. SMITH
JAMES J. CULLEN
PAMELA FOLEY
GUY ARENA
STEPHANIE M. ROSE
EDWARD Z. MACKEY
JANE CARTER AND FORREST CARTER
JACK KELLEHER
SOPHIE AND JOHN BIALEK
NORMAN W. FERRICK

RAOUL & YOLANDE GAGNON
CHESTER & VIRGINIA ROGERS
EDGAR A. TURNER
WILLIAM AND JENNIE CYNKUS
FRANK AND MARY VIDMAR
MARY ELLEN DONNELLY FULTON
JAMES NIKITAS
JESSIE AND JOSEPH SAROKA
THOMAS SAROKA
JUDITH AND DAVID NIKITAS
CHUCK CODY
EAMONN L. McDONNELL
MARIE LAMBE
MARK AND EILEEN HAYES
ALICE AND CLIF KIESLING
LOU MALAQUIAS
DEBORAH SHERIDAN
SARA ROSE JONES
PAUL A. BEAULIEU AND FAMILY
ASHLEY P. PERRY AND FAMILY
JOHN BIAGIOTTI
STANTON AND ANN PARISH
ALICE MCKENNA
DECEASED PRIESTS AND RELIGIOUS
WHO SERVED PARISHES IN IPSWICH

SAINT VINCENT DE PAUL SOCIETY ADVENT UPDATE

On Christmas Day, the angels tell the shepherds that the Messiah was born and where to find him. How and when are we told where to find Jesus? We believe that God reveals his divine presence every day in the smile of another, in someone's generous offer, in a plea for help, in the cry of the poor and oppressed, in the aging needing a listening heart, in the sick needing a consoling hand. Our vocation as Vincentians is to draw near to the poor and needy in our community and to strive to see the face of Jesus in those we serve. This is the essence of Vincentian spirituality.

We are grateful for the continued generosity of our Lady of Hope Parish members, who, through your poor box donations each week, provide us the means to serve the poor and needy of our community. We provided food and fuel assistance to 17 individuals and families this past Thanksgiving. These individuals and families represent our neighbors; the aged, recent immigrants, and those wrestling to stay on their financial feet through medical setbacks. We plan to do the same with God's grace and your financial support this Christmas season and throughout 2023.

The needs are great: over the past year, your contributions have allowed us to provide over \$2000 in rental assistance, \$3000 in utility assistance, and \$5000 in food assistance to the poor and needy in Ipswich. The rising energy, housing, and food prices we are all experiencing are having a dramatically more significant impact on the poor among us. Your support in this Christmas season and year-long will allow us Vincentians to continue to personally present the face of Our Lady of Hope Parish charity to our immediate neighbors in need.

Please consider contributing whatever amount you can afford to our poor boxes. Please reflect if Christ is calling you in the new year to serve Jesus by participating with your fellow parishioners in our SVDP chapter here at our Lady of Hope Parish.

The mystery of the birth of Jesus is supremely a mystery of love. The language of God at Christmas is one of love. The only gift we can offer our newborn Savior is our hearts, within which lie our wills. Aligning our will work ever more closely with God's will, at all times and in all circumstances, is the only gift we can offer our savior on Christmas day and throughout the year.

SPECIAL COLLECTIONS:**FUEL COLLECTION**

The Fuel collection is a great help in funding the anticipated cost of the parish heat and utilities this winter. Thank you to all who have generously donated to this important fund \$7,855.00. The collection continues to be taken up during the month of January. Donations can be mailed, put on rectory porch or dropped in the weekend collection baskets. Again, thank you in advance for your continued generosity to this important collection that supports Our Lady of Hope Parish.

CHURCH IN LATIN AMERICA—JANUARY 21-22

This collection supports the Church in Latin America (CLA). The CLA provides support for pastoral projects in financially poorer dioceses in Latin America and the Caribbean. CLA funds catechetical and lay leadership programs, youth ministry, evangelization programs, and formation programs for religious priests and deacons. CLA is making it possible for the Catholic faithful in the Western hemisphere to help each other. Please visit: www.usccb.org/catholicgiving/opportunities-for-giving/latinamerica/index.cfm for more information.

PROTECTING GOD'S CHILDREN

All volunteers who minister in the Archdiocese must attend the Protecting God's Children training and complete the Code of Conduct form. In addition, every year all current volunteers and new volunteers must complete a CORI Form. Our Lady of Hope has begun the process for CORI completion for all volunteers and forms are available at the exit of the hall. Contact the rectory office to verify your ID (driver's license or passport) once completed. There have been downsides to the Pandemic, but an upside has been online training sessions for the Protecting God's Children (Virtus) program. Which might be more convenient to those with busy schedules.

If you will be volunteering and have not yet attended a training, the Child Advocacy office is now providing 'live' weekly PGC trainings on Zoom through Virtus throughout the summer. Just go to the usual Virtus.org, the 'Live Training' tab and Pre-register for an upcoming live training session – and you will find the schedule for adults to complete their PGC requirement with the Archdiocese of Boston via Zoom (Braintree).

You will also see other Live sessions being offered in person throughout the diocese, so if you prefer; you can attend in person at others listed too. If you register for a training, please let us know once completed and forward a copy of your completion certificate to the rectory office.

CURSILLO

**An opportunity to deepen your faith |
The Boston Cursillo Movement |
www.bostoncursillo.org**

The Cursillo is a "little course in Christianity" that begins on a Thursday evening and concludes Sunday afternoon. Each Cursillo is an encounter with Christ in a small community of the Church, in order that Christ's love and grace can be brought to every aspect of life. Fr Bill Murphy and Mary Ann McLaughlin will be the Spiritual Directors of upcoming weekends.

The Boston Cursillo Weekends will be held at The Notre Dame Spirituality Center 30 Jeffrey's Neck Rd, Ipswich MA 01938. For more information call: Chris Graf 617-332-5548

The dates for the Cursillo Weekends are:

**Women's Weekend ~ February 9 – 12, 2023
Men's Weekend ~ March 23 -26, 2023**

OUR LADY OF HOPE MEN'S GROUP

Our Lady of Hope Men's Group invites you to come join us Saturday mornings from 7:00 - 9:00 in the church hall, for light refreshments and Christian fellowship in an easy-going, informal atmosphere.

PARISH ROSARY GROUP

Praying the Rosary for those affected by abortion

Please join us every Tuesday at 7 PM in the upper Church for reciting the Rachel Rosary, intercessory prayer for victims of post-abortion syndrome. Rachel Rosary is a positive and appropriate means of praying for those affected by abortion. All are welcome to attend each week or as you are able.

VOCATIONS

Interested in learning how you can lend your talents to encouraging those men called to be holy priests? Want to explore vocational discernment, seminary life, and the life of seminarians and priests? Come see the new vocations website at www.vocationsboston.org and feel free to contact the Vocation Office by phone at 617-746-5949.

WORLDWIDE MARRIAGE ENCOUNTER

Worldwide Marriage Encounter is sponsoring a variety of in-person and virtual marriage experiences, some on weekends and some on seven weekdays. Couples will explore their relationship with each other, God, and the Church. Registration is limited and a \$100 application fee is required. For more information or to apply, call Joe & Ginny Vattelle at 800-710-9963 or visit them at <https://www.mema.org/>.

PARENTING JOURNEY

By Sheri Wohlfert



ENCOURAGING HEALTHY EATING WITH OLDER KIDS

Last month we offered some tips for the mealtime battle arena. We'd like to offer a few more helpful ideas for peaceful meal-times, especially for older eaters.

It's not about the carrots!

Often it isn't about the food at all. It's an attempt to have control of something. Struggles with eating are often about emotions that have nothing to do with what's on the plate. Patiently get to the bottom of things and separate the applesauce from the tiredness, frustration or whatever else might be going on in your child's life.

Food is fuel, not a reward!

It's all about balance. Help your children focus on eating a variety of healthy foods to fuel their body and help them grow strong and stay healthy. Vegetables aren't the enemy that must be conquered before the sugary surprise at the end. This can send a message that the food on their plate is somehow not as valuable or important as the dessert.

Don't set up camps!

Not only are we trying to build up healthy bodies, we are aiming for healthy body image as well. If we label foods as good foods and bad foods, kids can lose their sense of balance. An occasional piece of chocolate cake isn't the enemy, but we need to teach our kids that different foods can do different things for our body. Comments such as, "Eating that will make you fat" or "People who care

about their health never eat those things" can be tough for a kid to understand and can lead to feelings of shame.

Change is OK!

What happens if your pre-teen comes home and wants to become a vegetarian? The first step if you are a cheeseburger-loving household is to take a breath. There are a few things to remember. Have a conversation about the root of the change. Is there a sincere desire to change or is it precipitated by peers? Do some homework. Study together what nutrients a person needs during their teen years and figure out how this new style of eating will meet these needs. Take it for a test drive. Find some recipes that look interesting and prepare them together. At the end of the test drive, evaluate and see where you stand. One thing to be clear about is the need for teamwork with food prep; help them understand you still have to feed the rest of the family so two separate dinner menus can't happen without help.

Grace!

Ask God for the grace to give your worries over to him — to remember they may make less than stellar food choices when they aren't in your kitchen. It's not just about one meal or one weekend, it's about making mostly good choices much of the time.

Prayer!

When we pray together before meals, we are trusting that the God who created and adores us will nourish, sustain and bless us and our bodies.

©FaithCatholic

LENTEN PARISH MISSION

Our parish will hold a Lenten Parish Mission with Sr. Briege McKenna and Fr. Pablo from Monday, March 27, through Thursday March 30. Sr. Briege is a renowned international speaker and has been instrumental in bring the love of Jesus and His healing presence into the lives of countless people. We are blessed to have her and Fr. Pablo coming to Our Lady of Hope. Further details will follow. For more info on Sr. Briege cf. www.sisterbriege.com

Summer of 2023:

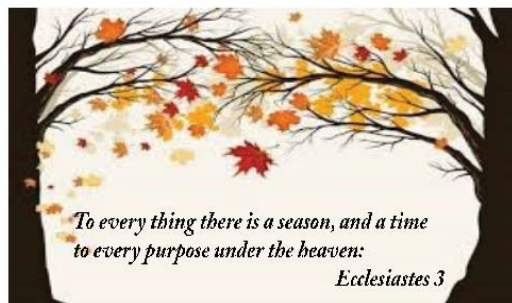
Fr. John will be leading a pilgrimage to Ireland with **206 Tours** in the summer of 2023 from July 30 to August 8.

We will visit **Dublin**

**Wicklow · Glendalough ·
Tipperary · Rock Of
Cashel · Kerry · Dingle Pen-
insula · Shannon · Cliffs Of
Moher · Corcomroe
Abbey · Galway · Corrib
Lake · Clonmacnoise · Knock.**
For more info cf.

For more info, visit www.pilgrimages.com/frkiley

OUR LADY OF HOPE PARISH
2022 GRAND ANNUAL COLLECTION



*We have so much to be grateful for;
God has blessed us abundantly.*

If you have not yet made your gift to our Grand Annual Collection, please join your fellow parishioners and support your parish at this time.

XXXXXXXXXXXXXXXXXXXXXXXXXXXXXXXXXXXX

2022 Grand Annual Collection

Our Lady of Hope Parish
Ipswich, Massachusetts

Name: _____

Address: _____

City, State Zip: _____

Email: _____

Please make checks payable to:
Our Lady of Hope Parish

Please prayerfully consider:

Pledge 2 Monthly Payments

☐ \$1,000.00 \$500.00 per month
☐ \$500.00 \$250.00 per month
☐ \$350.00 \$175.00 per month
☐ Other \$

Check One:

☐ Single Payment in Full☐ Send Monthly Reminder Statements

☐ I have made my payment online at www.inswichcatholics.org

www.rznickeinstromkz.org

Gift Total: \$ _____
 Enclosed Amount: \$ _____

Enclosed Amount:	\$
Balance Due:	\$

2022 CONTRIBUTION STATEMENTS

Please let us know if you would like a 2022 statement of the contributions you made in OLOH envelopes, contact the Rectory office at 978-356-3944. For those who have been making contributions through Online Giving, you are able to print a statement yourself when logged into your account. The Parish is also able to issue contribution statements for donations that include those made through Online Giving. If you are not currently receiving envelopes and would like to, let us know.

World Youth Day
Lisbon – August 2023

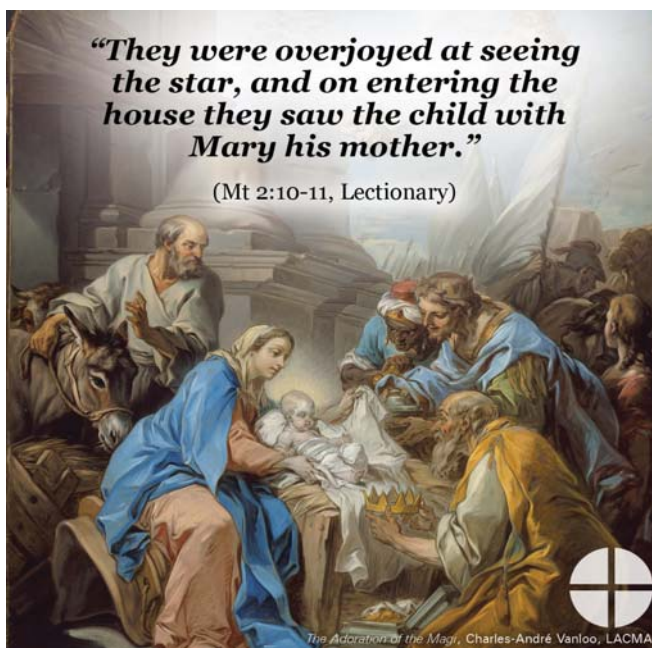
Although the specific dates have not yet been confirmed by the Vatican, we know that the location for the next International World Youth Day Gathering is Lisbon, Portugal, and that it will be held in August of 2023.

The Archdiocese of Boston is once again partnering with Dube Travel to provide a pilgrimage opportunity for groups and individuals who want to attend. The pilgrimage that Dube Travel is offering includes a visit to the Fatima shrine and sites associated with the apparition of Our Lady whose Feast Day was celebrated on May 13th. Visit the website for the Shrine of Our Lady of the Rosary of Fatima to learn more about the apparition and the shrine itself:

<https://www.fatima.pt/en>. To request to be added on future updates for World Youth Day Lisbon email: cdonoghue@rcab.org.

“They were overjoyed at seeing the star, and on entering the house they saw the child with Mary his mother.”

(Mt 2:10-11, Lectionary)





QUIZ

Can you choose the correct endings?

- Jerusalem was to rise up in splendor because:
(a) it was to be rebuilt (b) its enemies would be defeated (c) its light had come?
- People would come from Sheba bearing:
(a) gold and frankincense (b) arms (c) gifts from God?
- St. Paul said that Gentiles and Jews were now:
(a) made equal in Christ (b) separated for ever (c) under God's curse?
- The astrologers sought a new king because:
(a) they had seen his star (b) they had studied ancient books (c) they had had a vision?
- After they saw Jesus, the astrologers:
(a) reported to Herod (b) returned by a different route (c) stayed for a year?

ANSWERS

The correct answers are: 1(c); 2(a); 3(a); 4(a); 5(b)

WORDSEARCH

Can you find and circle the words listed below?

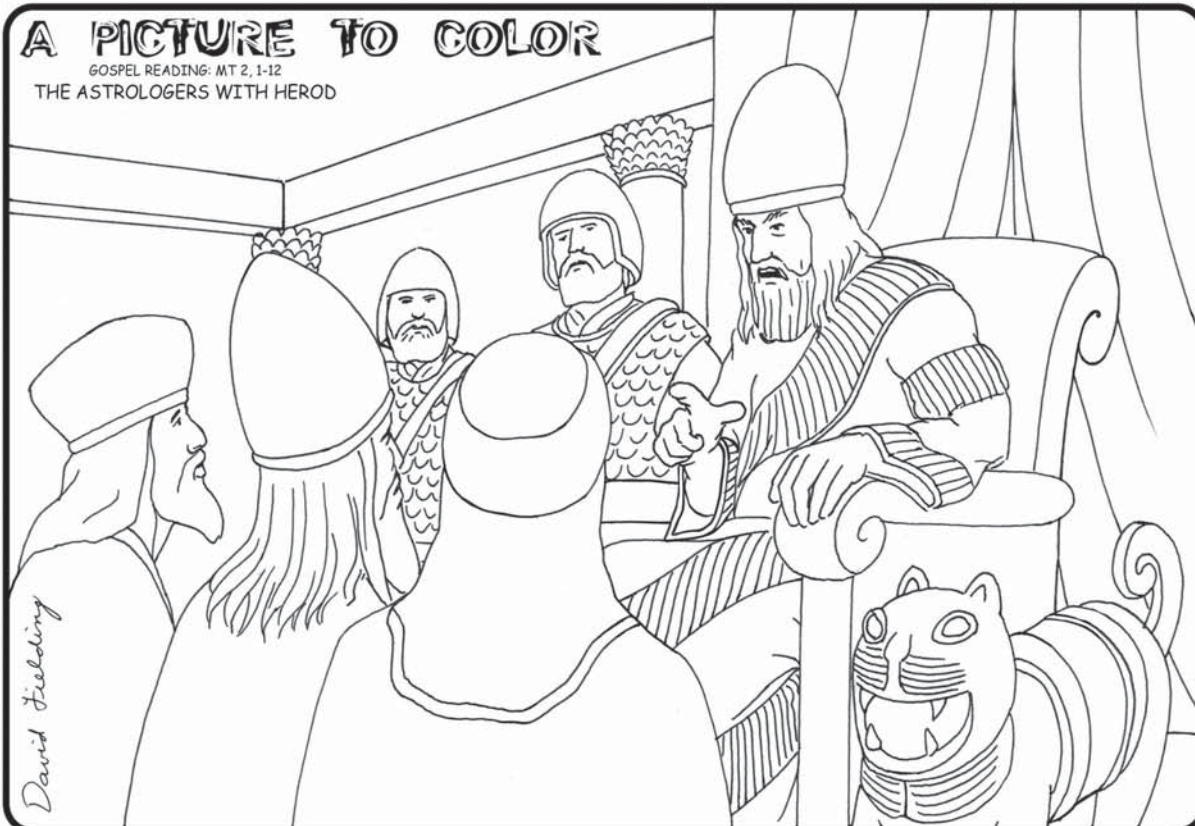
GOSPEL SECRET HEROD
LIGHT APOSTLES KING
GLORY PROPHETS RULER
RICHES PROMISE CHILD
SEA SPLENDOR GIFTS

Solution to last week's crossword



A PICTURE TO COLOR

GOSPEL READING: MT 2, 1-12
THE ASTROLOGERS WITH HEROD



© 2008 Karides Lic. to St. George Publishing



Donate Your Vehicle

Call (844) 518-0031 to donate
your car, truck, boat, RV,
and more today!

How it Works:



1. Contact Us
Call (844) 518-0031



2. Schedule Pickup
We'll pick up your
vehicle for FREE -
at a time and place
convenient for you.



3. Receive Top
Tax Deduction
You may qualify for
a tax deduction.

- Support Veteran Nonprofits.
- Free Pickup & Towing.
- Top Tax Deduction.

What kinds of vehicles can I donate?

Veteran Car Donations accepts most cars, trucks, boats, RVs,
and motorcycles. We can pick up your vehicle, running or not.

It gets better: your car donation can be picked up within
24 hours, and in some cases even the same day.



Donate Your Vehicle Today
844-518-0031



While we appreciate every donation, in some cases, we find that we are unable to accept certain vehicles, watercraft, and/or recreational vehicles due to the prohibitive costs of acquisition. If you have any questions, please give us a call at (844) 518-0031



How Your Vehicle Donation Helps Veterans

Your vehicle donation directly helps us to provide our nation's
heroes with much needed programs and services, such as:

- Essential Medical Care and Mental Health Services
- Mentoring, Job Skills Training, and Employment Assistance
- Food, Emergency Shelter, and Housing for Homeless Veterans
- Post-Traumatic Stress Disorder (PTSD) Therapy and Grief Counseling



FROM
\$2,049*
\$1,799*

FREE ONBOARD CREDIT

GRAND ALASKAN CRUISE & TOUR

12 days, departs May - September 2023

**Vancouver • Ketchikan • Juneau • Skagway •
Glacier Bay • Anchorage • Denali • Fairbanks •
and more** — Visit Denali National Park and Glacier Bay
National Park on the same incredible trip! Cruise through
the Gulf of Alaska and the Inside Passage as you discover
the best of the Frontier State by land and by sea.



promo code N7017
1-866-557-0753

* Prices are per person based on double occupancy plus \$299 in taxes & fees. Single supplement and seasonal surcharges may apply. Add-on airfare available. Onboard Credit requires purchase of Ocean View or Balcony Cabin. Offers apply to new bookings only, made by 12/31/22. Other terms & conditions may apply. Ask your Travel Consultant for details.

Your kitchen
wishes
granted.

ShelfGenie
EVERYTHING WITHIN REACH®
a Neighborly company

**50% OFF
INSTALL!**

12
MONTH
NO
INTEREST
NO
PAYMENTS
*No Approved Credit

Custom Glide-Out Shelves. Easy access, less stress, your kitchen wishes granted.

Call for Your **FREE** Design Consultation **(855) 625-9032**

*Limit one offer per household. Must purchase 5+ Classic/Designer Shelves. EXP 12/31/22. Independently owned and operated franchise. © 2022 ShelfGenie SPV LLC. All rights Reserved.

Whittier - Porter Funeral Home

Six High Street, Ipswich (978) 356-3442



Serving Our Community
For Over 100 Years

Robert B. Porter
Director

Pre-Need Planning
Grief and Healing
Lending Library

We remain true to our vision to positively affect
the lives of every person, business and organization
within the communities we serve.



INSTITUTION FOR SAVINGS

BUILDING STRONGER COMMUNITIES TOGETHER SINCE 1820.

978-462-3106 • institutionforsavings.com



Call today and receive a
FREE SHOWER PACKAGE
PLUS \$1600 OFF

SAFE STEP
WALK-IN TUB

1-855-408-5943

With purchase of a new Safe Step Walk-In Tub. Not applicable with any previous walk-in tub purchase. Offer available while supplies last. No cash value. Must present offer at time of purchase. CSLB 1082165 NSCB 0082999 0083445

IF YOU LIVE ALONE YOU NEED A MEDICAL ALERT At HOME or AWAY

* GPS * Fall Alert * 24/7 * 365 Monitoring
Ambulance * Police * Fire * Family/Friends



MDMedAlert™

As Low As **\$19⁹⁵**/month



GPS Mobile Above

No Contract • No Fees • Easy Setup • md-medalert.com **CALL 800-890-8615**

"Jesus Wept." John 11:35

Prepare for power outages today

WITH A HOME
STANDBY GENERATOR

GENERAC®

**\$0 MONEY DOWN + LOW MONTHLY
PAYMENT OPTIONS**

Contact a Generac dealer for full terms and conditions

**REQUEST A
FREE QUOTE**

CALL NOW BEFORE THE
NEXT POWER OUTAGE

(855) 401-9893



FREE 7-Year Extended Warranty*
– A \$695 Value!

*To qualify, consumers must request a quote, purchase, install and activate the generator with a participating dealer. Call for a full list of terms and conditions.

LeafFilter®
GUTTER
PROTECTION

**BACKED BY A
YEAR-ROUND
CLOG-FREE
GUARANTEE**

BEFORE LeafFilter

AFTER LeafFilter



EXCLUSIVE LIMITED TIME OFFER!

20% OFF + 10% OFF

YOUR ENTIRE
PURCHASE*

SENIORS &
MILITARY!

FINANCING THAT FITS YOUR BUDGET!*



*Subject to credit approval. Call for details.

Promo Code: 285

FREE GUTTER ALIGNMENT + FREE GUTTER CLEANING*



**CALL US TODAY FOR
A FREE ESTIMATE**

1-888-674-0885

Mon-Thurs: 8am-11pm, Fri-Sat: 8am-5pm, Sun: 2pm-8pm EST

A COMPANY OF
LEAFHOME

*For those who qualify. One coupon per household. No obligation estimate valid for 1 year. **Offer valid at time of estimate only. 2The leading consumer reporting agency conducted a 15 month outdoor test of gutter guards in 2010 and recognized LeafFilter as the "#1 rated professionally installed gutter guard system in America." Manufactured in Plainville, Michigan and processed at LMT Mercer Group in Ohio. See Representative for full warranty details. Registration# 0366920922 CSLB# 1035795 Registration# HIC-0649905 License# CB056678 License# RCE-51604 Registration# C127230 License# 559544 Suffolk HIC License# 52229-H License# 2102212986 License# 262000022 License# 262000403 License# 2106212946 License# MHIC111225 Registration# 176447 License# 423330 Registration# R731804 License# 50145 License# 408693 Registration# 13VH09953900 Registration# H-19114 License# 218294 Registration# PA069383 License# 41354 License# 7656 DGPL #10783658-5501 License# 423330 License# 2705169445 License# LEAFFNW822JZ License# WV056912

MORRIS FUNERAL HOME

45 North Main Street • Ipswich, MA (978) 356-2422

John A. Morris
Owner &
Parishioner

www.morrisfh.com



Gone But Not Forgotten, LLC

Headstone Cleaning &
Site Grooming

978-968-7476

cleaningatgonebutnotforgotten@gmail.com

<https://sites.google.com/view/gonebutnotforgottenllc/home>

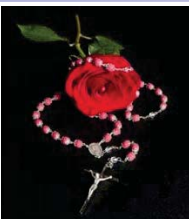


Now Scheduling
Spring Clean-Ups!

Rosaries from Flowers

"Handmade from the Flowers
of your Loved One"

www.rosariesfromflowers.com



841 Main Street
Tewksbury, MA 01876
(978) 851-9103



Ray Gosselin
Realtor



617-543-9841

Ray@ChurchillProp.com

266 Cabot St
Unit 7 Beverly, MA



www.ChurchillProp.com

**AD SPACE
AVAILABLE**
617-779-3771



Closed Mondays
& Tuesdays

We will not be serving lunch or
brunch during this time

Dinner Hours
Wednesday & Thursday
4:30-8

Friday & Saturday
4:30-9
Sunday
4-7:30



Function Rooms Available

51 Linebrook Road
Ipswich, MA 01938
978.356.1640

Nails Etc. Day Spa

c'est la vie

Advanced Products and Treatments For a
Healthy Skin and Body!

Full Day &
Med Spa Services

978-356-9491 | www.nailsetcdayspa.org
34 Market Street Ipswich, MA

"Feed My Sheep" John 21:17

**AD SPACE
AVAILABLE**

617-779-3771



- Fellow Parishioner -

Toni Riddle GRI

Real Estate Advisor / REALTOR®
978-233-2832
triddle@windhillrealty.com
16 Market Street - Ipswich
www.windhillrealty.com



A TRADITION OF EXCELLENCE FOR OVER 25 YEARS!

MEMBER - WHITTIER HEALTH NETWORK

MASCONOMET

Healthcare Center

123 High Street, Topsfield, MA (978) 887-7002 • whittierhealth.com
Accepts all HMO's, Medicare and Commercial Insurance

Respite Care • Longterm Care
• Adult Day Care
Extended Rehabilitation
& Restorative Care



22 Brown Square, Ipswich
(Former Site of Barton Stone)
Monuments - Markers - Memorial Plaques
Expert Cemetery Lettering & Monument Cleaning

Rita Parent 978-356-2334
1889memorials@verizon.net



SUPPORT OUR PRIESTS
THIS CHRISTMAS

Your gift helps care for the
health and well-being of
priests in good standing.

Give today at
clergytrust.org



**IT'S NOT TOO LATE!
INSTALL THIS FALL AND
SWIM ALL SEASON IN 2023!**



Gibraltar Pools & Spas

RT. 1, TOPSFIELD
978-887-2424

FREE
Computerized
Water Testing!