



PROJECT ERGOHUMAN G2



PROJECT ERGOHUMAN G2 OVERVIEW

The remastered Project Ergohuman is the ideal operator chair for large or small scale office fit-outs where an affordable, high-end chair that supports employee wellbeing and productivity is desired. Designed for intuitive and quick adjustment, the Project Ergohuman is the perfect seating solution for corporate offices and shift work environments.

The redesigned Gen-2 model features a button on the left to control the new forward seat tilt function in addition to the ingeniously simple single lever which operates the three most frequently used chair functions (seat height, seat slide and back tilt). Other new features include a tension dial on the backrest for fine-tuning the integrated lumbar support; and armrest width control in addition to height, depth, and angle adjustability.

Project Ergohuman G2 boasts 91% recyclability, has Greenguard Gold Certification, and meets EN 1335 for certified 8-hour use. It's stocked in black with a durable nylon base with black W-mesh on fast track delivery, or in a choice of coloured mesh upholstery on a longer lead time.





PROJECT ERGOHUMAN G2 FEATURES

FEATURES

- Synchro mechanism
- Durable black frame
- Height-adjustable split backrest design
- Right lever for:
 - seat height
 - seat slide (50 mm)
 - lockable back tilt
- Left lever for forward seat tilt
- Recline tension control
- Integrated lumbar support with tension control
- 4D adjustable armrests with soft-touch pads:
 - height, width, depth, and angle
- Enhanced waterfall front seat
- Black nylon base with 65 mm castors
- Black W-mesh on fast track

OPTIONS

- Adjustable headrest
- Choice of coloured mesh upholstery*
- Legrest*
- Coat hanger*

* on a longer lead time



PROJECT ERGOHUMAN G2 DIMENSIONS



DIMENSIONS (mm)

Overall height: 1180-1370

Overall depth: 675

Overall width: 675-690

Base diameter: 675

Seat height: 500-600 (range 100)

Seat depth: 490-540 (range +50)

Seat width: 510

Back height: 550 (range +50)

Arm height from seat: 150-250 (range 100)

Armrest width range: 15 + 15

Armrest depth: 295-235 (range 40)

Armrest angle: 60° in / 10° out

Armpad tilt: 42°

OPTIONAL:

Headrest stem height range: 75

Headrest angle: 35°

Legrest extension: 400

WEIGHT LOADING

Warrantied for use by persons up to 110 kg.

PROJECT ERGOHUMAN G2 CREDENTIALS

CERTIFICATION

- o EN1335-1
- o ANSI/BIFMA X5.1-2017
- o GREENGUARD GOLD
Greenguard Certification Standards have established performance-based standards to define products and processes with low chemical and particle emissions for use indoors.

WEIGHT LOADING

- o Warrantied for users weighing up to 110 kg

Comfort Seating has been verified meeting the requirements of ISO 14067 :20 18

CARBON FOOTPRINT CO₂e

Raw material:	106.069 Kg
Manufacture phase:	2.029 Kg
CO ₂ e cradle to gate:	108.097 Kg

RECYCLABILITY



MATERIAL ANALYSIS

PLASTIC	52.98%
ALUMINIUM ALLOY	33.56%
STEEL	4.90%
UPHOLSTERY	3.86%
PU	4.70%

RECYCLED CONTENT

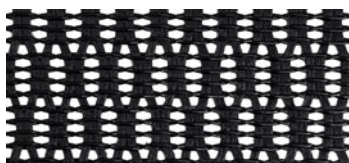
PLASTIC	29%
ALUMINIUM ALLOY	10%
STEEL	10%
UPHOLSTERY	-
PU	-
TOTAL Manufactured using recycled content	20%



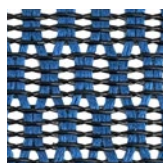


PROJECT ERGOHUMAN G2 TEXTILES

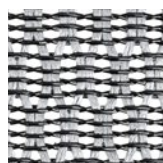
W MESH



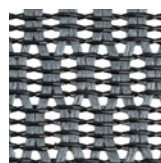
BLACK (STANDARD)
W09-01



BLUE
W09-18



WHITE
W09-24

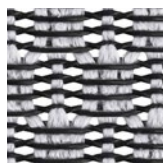


GREY
W09-53

T MESH



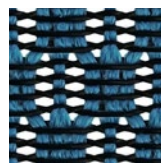
BLACK
T-168-B1



LIGHT GREY
T-168-B2



SCARLET
T-168-B3



COBALT
T-168-B4



PINK
T-168-B5



GREEN
T-168-B6







COMFORTUK HQ
Riverbank Mill
2 Stoneygate Road
Newmilns, Ayrshire
United Kingdom, KA16 9AJ

T+44 (0)1560 324 446
Ehello@comfort.global