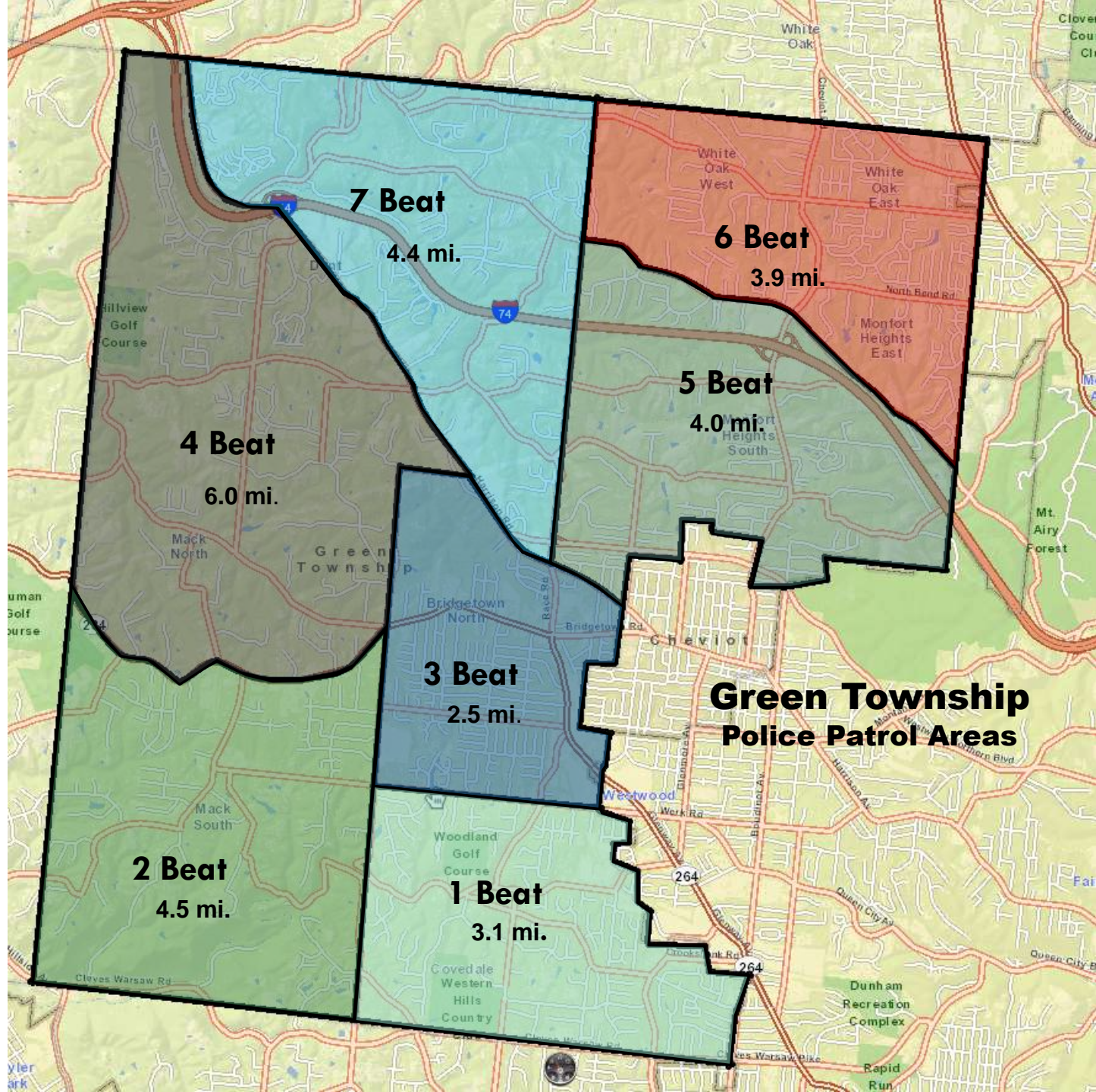


GREEN TOWNSHIP POLICE DEPARTMENT

Currently Staffed with 59 officers

- 41 Assigned to the Patrol Section
- 12 Assigned to Investigations/Problem Oriented Policing Unit
- 2 School Resource Officers
- 1 Property Maintenance Officer
- 2 Command-Level Administrative Officers
- 1 Chief of Police





SERVICES PROVIDED BY OUR PATROL OFFICERS

- Vacation House Checks
- Business Checks
- Birthday with the Badge
- Toys, Tots, and Cops
- Citizens Police Academy
- School Checks
- Fingerprinting Services
- Honor Guard for Community Events



CHANGES FROM 2014



- In 2014, we had 35 Green Township officers supplemented by 12 sheriff's deputies for a total of 47 officers.
- In 2018, the compliment of sheriffs deputies provided to the township was reduced to 5, GTPD officers increased to 42.
- The sheriffs office stopped providing patrol services in Green Township in 2021. However, we still have a great working relationship and are members of their Regional Narcotics Unit.
- In order to replace the sheriffs deputies and to have enough staff to meet community expectations, the number of officers has been increased to 59 today.
- Although the number has improved significantly, Green Township still has the lowest officer to citizen ratio of all departments in the area.

OFFICER TO CITIZEN RATIO

(OFFICERS PER 1,000 RESIDENTS)

Amberley Village	7.03	Madeira	2.95
Blue Ash	2.76	Mariemont	5.12
Cheviot	1.85	Montgomery	2.03
Cincinnati	3.41	Mt. Healthy	3.00
Colerain	1.05	National Average	2.40
Deer Park	2.58	Newtown	3.70
Delhi	1.11	North College Hill	2.59
Evendale	11.24	Norwood	2.78
Forest Park	1.81	Ohio Average	2.20
Glendale	6.53	Reading	2.08
Golf Manor	3.41	St. Bernard	3.93
Green Twp	0.98	Sharonville	2.83
Greenhills	3.21	Springdale	3.45
Harrison	1.91	Springfield Twp	1.34
Indian Hill	3.52	Terrace Park	3.82
Lockland	4.55	West Chester	1.35
Loveland	1.80	Wyoming	2.17

Green Township is the only local community with an officer to citizen ration less than 1.0

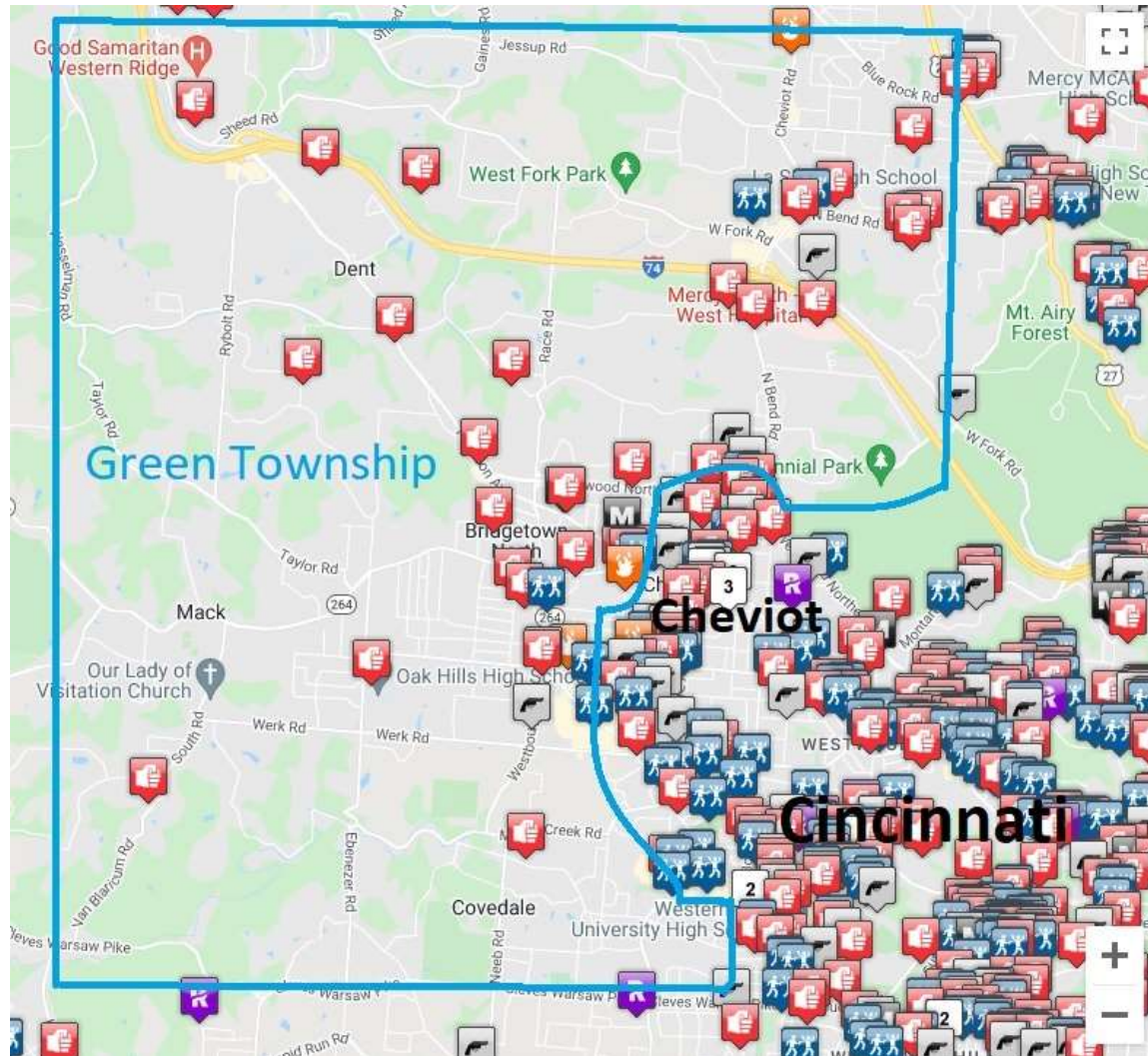
CHALLENGES AHEAD



- Significant crime challenges in some jurisdictions bordering Green Township
- An increase in violent crime near the township, following nationwide trends
- Continued growth in both residential population and commercial development resulting in an increased demand for services
- Hiring and retaining police officers in an extremely challenging law enforcement labor market

2021 VIOLENT CRIME

(MURDER, AGGRAVATED ASSAULTS, ROBBERIES, RAPES)



PROJECTED FUTURE OPERATIONAL NEEDS TO GREEN TOWNSHIP SAFE!

- Maintain Current Service Level Improvements
 - We are reaching a staffing level that allows the manpower and flexibility to respond to community needs and expectations.
- Increase patrol staffing during peak demand hours
 - A slight increase in our afternoon through early evening patrol staffing, when demand is highest.
- Increase staffing in investigations and problem oriented policing units
 - Focus on innovative, effective, long term solutions to neighborhood quality of life issues.
- Keep Green Township Safe!