



RIGTRANS

20ft Open Top Heavy Duty



Brief Specifications:

External dimensions: 6,058mm x 2,438mm x 2,591mm (high) 20'0" x 8'0" x 8'6" (nominal)

Internal dimensions: 5,861mm x 2,250mm x 2,238mm (high) 19'2" x 7'4" x 7'4"

Cubic capacity: 29.5m³, 1,041ft³

Tare weight: 3,700 kgs, 8,160lbs.

Payload: 16,000kgs, 35,270lbs.

Maximum Gross Weight: 19,700 kgs, 43,430lbs.

Features: TIR compliant tarpaulin, removable roof bows, fixed or swinging header option

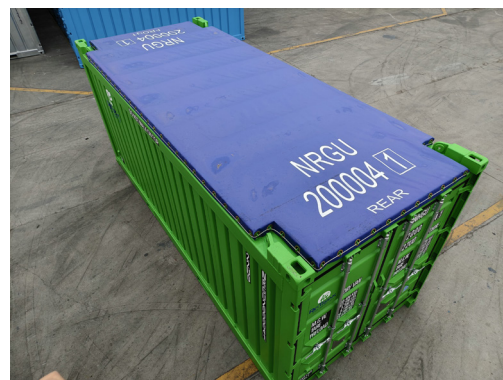
Special application: Heavy duty design

Certification: DNVGL-ST-E271 (DNV2.7-1), ISO10855, ISO1496/CSC, TIR

Due to continuous product development, all specifications are indicative. Individual container's dimensions may differ.

Rigtrans' own range of Open Tops is designed, manufactured and certified to DNVGL-ST-E271 (DNV 2.7-1), EN12079 and ISO10855. 10ft and 20ft units are also certified to ISO1496/CSC and ISO6346. DNV-GL certified sling sets can be supplied.

To make for efficient land based depot operation, all model types are fitted with fork lift pockets and all Open Tops can be multi stacked with their slings fitted. Internally, a range of lashing points is provided to suit multiple types of cargo. Options include, tarpaulins with roof bows, fixed or swinging rear header bars, cargo safety nets, drainage or tanking options and TIR compatibility. For delivery, 2 x 10ft units can be paired to create a 20ft ISO module enabling cost efficient delivery by containership.



2000-NRGU-250723.

Rigtrans Intermodal Limited

Registered Office: 20 Edenfield Gardens, Worcester Park, Surrey KT4 7DT
Registered in England No. 10519137

T +44 (0) 20 8330 6888
M +44 (0) 7836 695569
E sales@rigtrans.com
W rigtrans.com