



Opening Doors to Better Communities







Welcome to your new home at the Hudson Collection, a limited selection of 28 single family homes. Set in the historic city of Jurupa Valley, this new home community is designed to create a sense of pride in ownership with its lasting value that will endure for years to come. We have taken great care to create a peaceful setting where your family can grow, explore, experience, and enjoy the lifestyle you always envisioned. Conveniently located to nearby shopping, the Hudson Collection is a short drive for weekend fun in the nearby mountains or a family day at the beach.

Brought to you by the RC Hobbs Companies, The Hudson Collection, is another one of the many exceptional home communities that are a result of over 40 years of real estate excellence. "While many things have changed since our founding, one thing remains the same: our commitment to building quality and value into each of our homes ...including yours."



Ⓐ

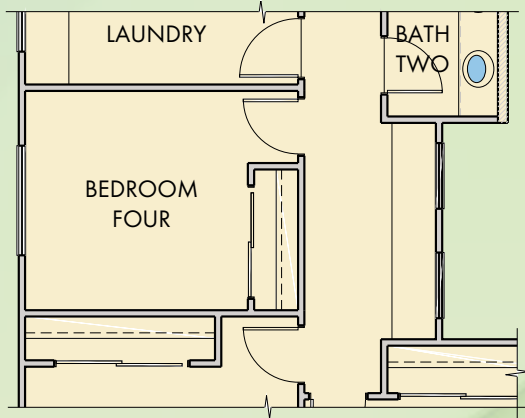
RESIDENCE ONE SPANISH

RESIDENCE ONE FARMHOUSE

Ⓑ

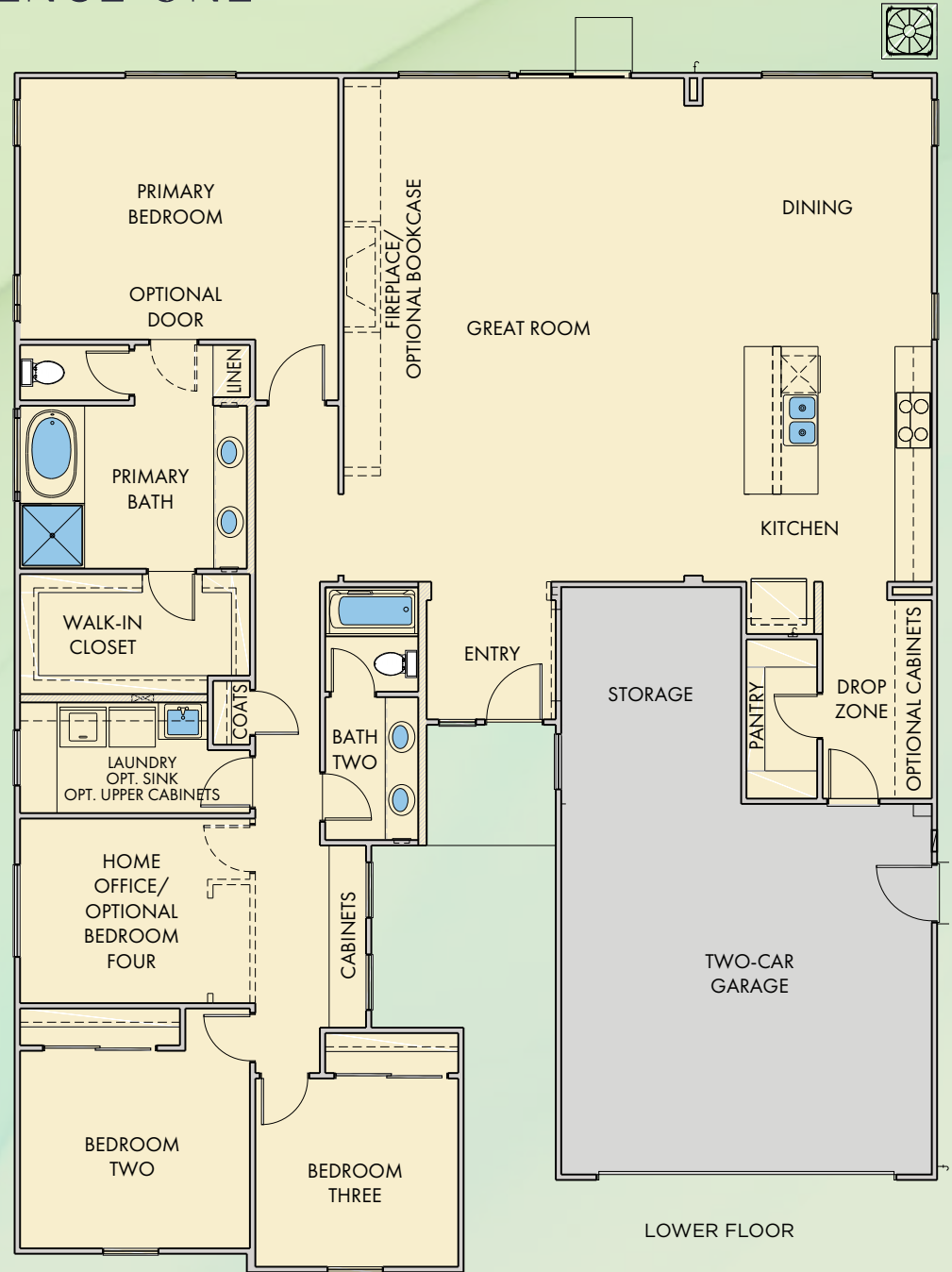


RESIDENCE ONE



OPTIONAL BEDROOM FOUR

- ATTRACTIVE SINGLE STORY HOME
- 2,450 SQ. FT. OF LIVING SPACE
- THREE BEDROOMS, TWO BATHROOMS
- OPTIONAL FOURTH BEDROOM
- CONTEMPORARY KITCHENS WITH GRANITE COUNTERTOPS
- FIREPLACE
- LAUNDRY ROOM
- TWO-CAR ATTACHED GARAGE WITH ADDITIONAL STORAGE



LOWER FLOOR



In a continuous effort to improve its products, the seller reserves the right at its sole discretion to make changes or modifications to maps, plans, specifications, materials, features, options, amenities and colors without notice. All maps, plans, landscaping and elevation renderings are artist's conceptions and are not to scale. Hudson offers detached homes with an association supported by its residents that maintains the common areas and facilities for a monthly fee. Membership is automatic. Models do not reflect racial preference. Square footage listed is an estimate. Prices are subject to change without notice. CA DRE#02131080





**RESIDENCE TWO
SPANISH**

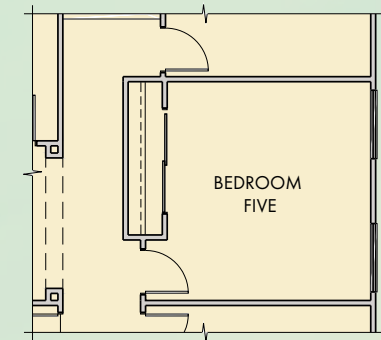
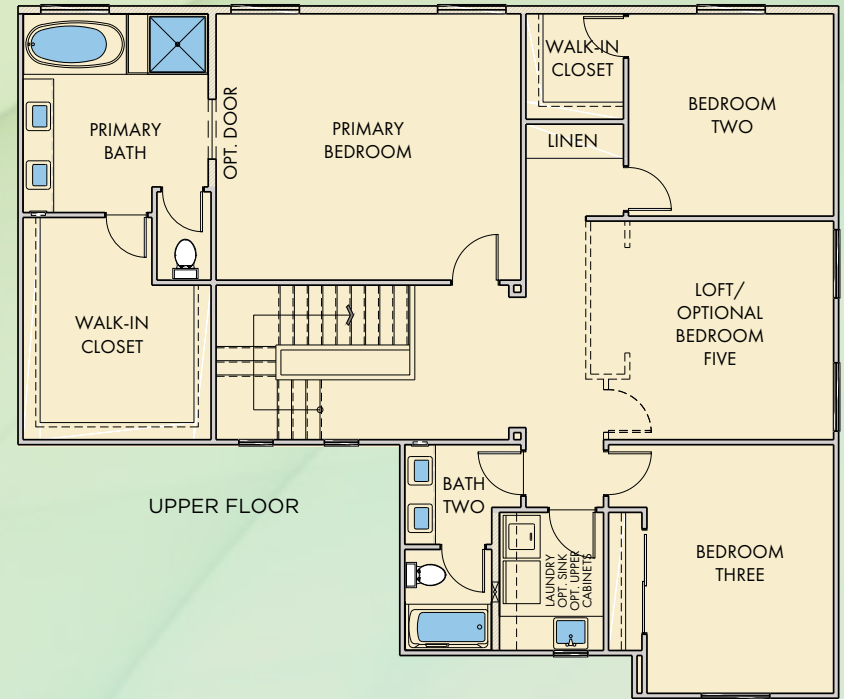
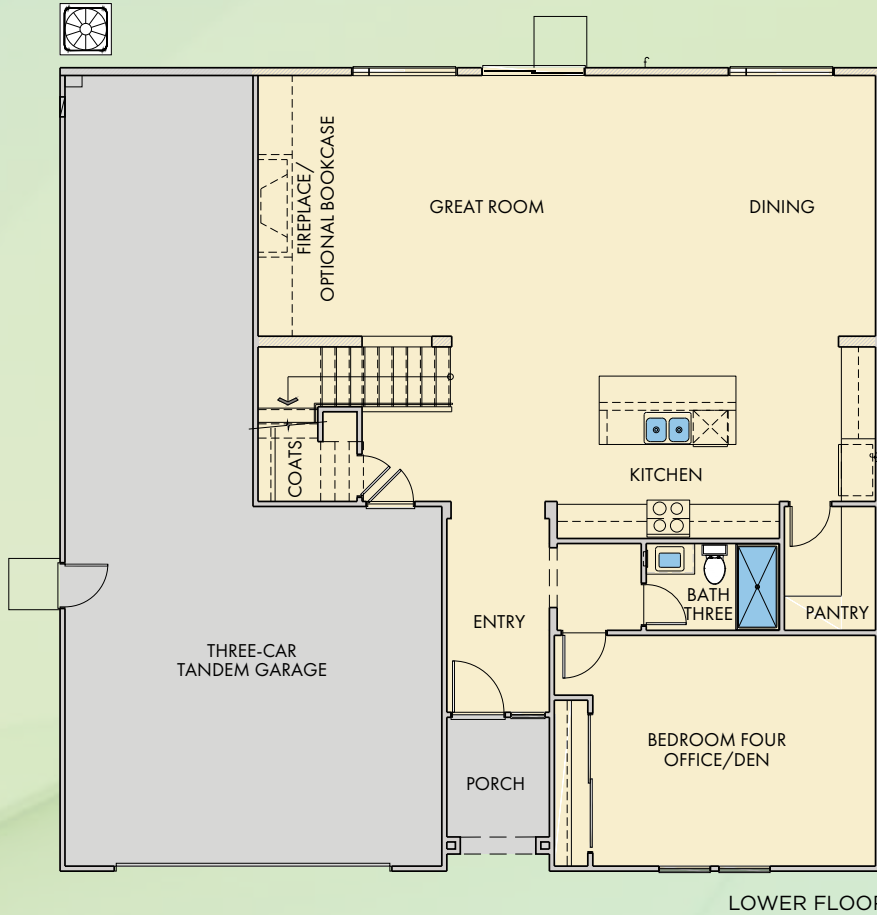
(A)

**RESIDENCE TWO
FARMHOUSE**



(B)

RESIDENCE TWO



- ATTRACTIVE TWO STORY HOME
- 2,927 SQ. FT. OF LIVING SPACE
- FOUR BEDROOMS, THREE BATHROOMS, OPTIONAL FIFTH BEDROOM
- CONTEMPORARY KITCHENS WITH GRANITE COUNTERTOPS
- FIREPLACE
- UPSTAIRS LAUNDRY ROOM
- THREE-CAR TANDEM GARAGE
- FRONT PORCH



**RESIDENCE THREE
SPANISH**

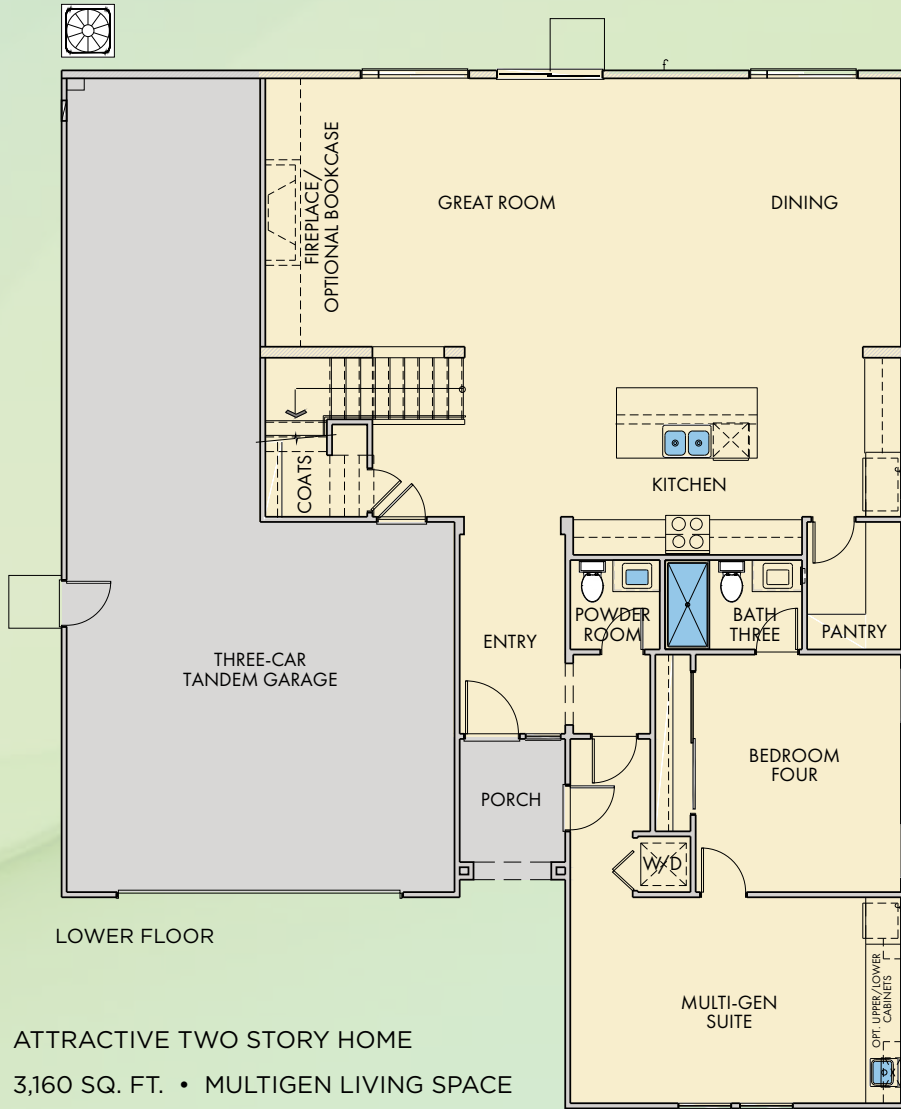
Ⓐ

**RESIDENCE THREE
FARMHOUSE**



Ⓑ

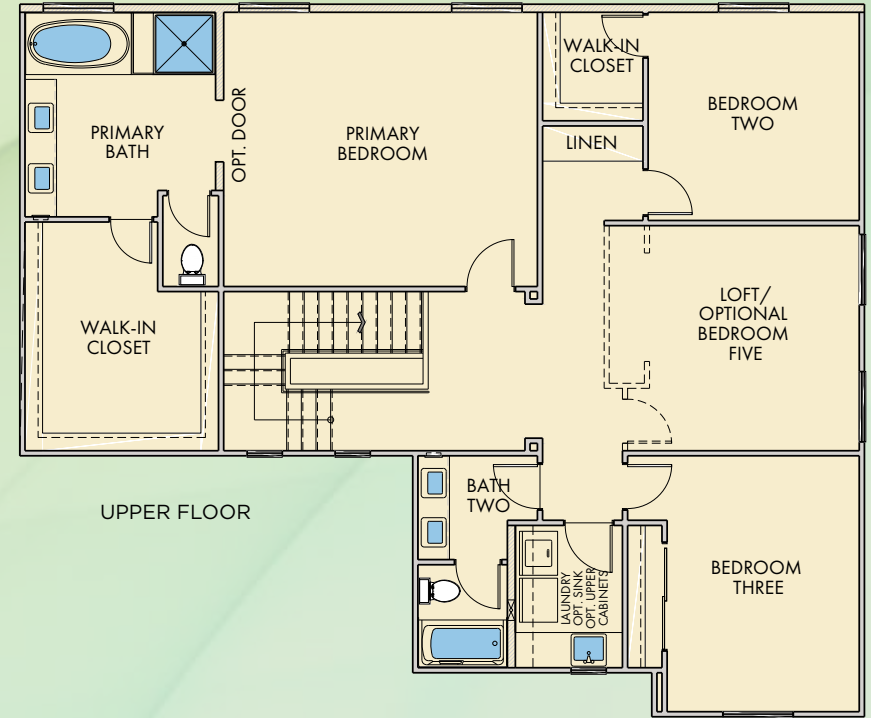
RESIDENCE THREE



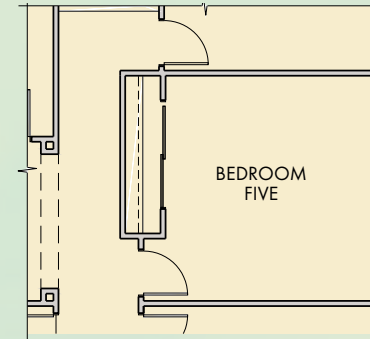
LOWER FLOOR

ATTRACTIVE TWO STORY HOME
 3,160 SQ. FT. • MULTIGEN LIVING SPACE
 FOUR BEDROOMS, THREE BATHROOMS,
 PLUS POWDER BATH
 OPTIONAL FIFTH BEDROOM
 CONTEMPORARY KITCHENS WITH
 GRANITE COUNTERTOPS

FIREPLACE
 UPSTAIRS LAUNDRY ROOM
 THREE-CAR OVERSIZE TANDEM GARAGE



UPPER FLOOR



OPTIONAL FIFTH BEDROOM



FEATURES

TECHNOLOGY & ENERGY

- Energy Efficient Low-E vinyl windows and insulated entry doors
- 3 coat stucco
- ERV Fan (Energy Recovery Ventilator)
- Economical, thermostatically controlled, gas forced-air heating with pilotless ignition
- Code Compliant HVAC system air conditioning with energy-efficient programmable thermostat
- Water conserving, low flush toilets
- Water conserving bath and shower heads
- Energy-saving weather-stripping on all exterior doors and interior doors leading to the garage
- 200 amp service panel
- Safety-conscious fire sprinkler system with smoke detectors and carbon monoxide sensor
- Standard tankless water heater
- Ask us about our solar program

QUALITY CONSTRUCTION

RC Hobbs Company, Inc. is committed to earning the trust of our homeowners by delivering a structurally and architecturally well-built house. Our homeowner's will have peace of mind knowing their houses were built with:

- Fire-resistant, concrete tile roof
- Weatherproofing systems at windows and exterior wall penetrations that exceed traditional building standards
- Air barrier system
- Manufactured flooring systems providing exceptional strength and performance

EXTERIOR FEATURES

First impressions make all the difference! The following exterior features have been carefully selected to provide each RC Hobbs home with its own sense of "curb appeal."

- Architectural styling showcasing Spanish and Farmhouse designs
- 2 panel plank self arched insulated entry door
- Spacious attached two-car / three-car-tandem garages with direct home access (per plan)
- Sectional roll-up garage door
- Drywalled garages (not painted)
- Service door with concrete stoop
- Front yard landscaping including automatic irrigation system and rain sensor
- Smart front door lock
- Gas stub in the backyard for BBQ

THE RC HOBBS EXPERIENCE

- A high-performance home engineered for energy efficiency, cost savings and comfort
- One-year RC Hobbs Homes limited warranty

INTERIOR FEATURES

Spacious rooms and elegant features help make a house a home. Features that make RC Hobbs Home special are:

- Nine-foot ceilings at first floor
- Ceramic tile in entryway, vinyl flooring in kitchen, baths, and laundry
- Spacious linen storage (per plan)
- Interior laundry room
- Natural gas stub for dryer
- Cheyenne Style interior doors
- Fireplace
- Cat 6 telephone outlet in kitchen
- TV / Data and phone outlets in primary bedroom
- Flat screen TV pre-wire in great room
- Low VOC paints and carpets for better indoor air quality
- Great room, loft, and primary bedroom pre-wire for optional ceiling fan

KITCHEN APPLIANCES

RC Hobbs homes are designed with spacious kitchens to serve your family and entertain your guests. The kitchen is the focal point of many homes, and your kitchen has been designed to include:

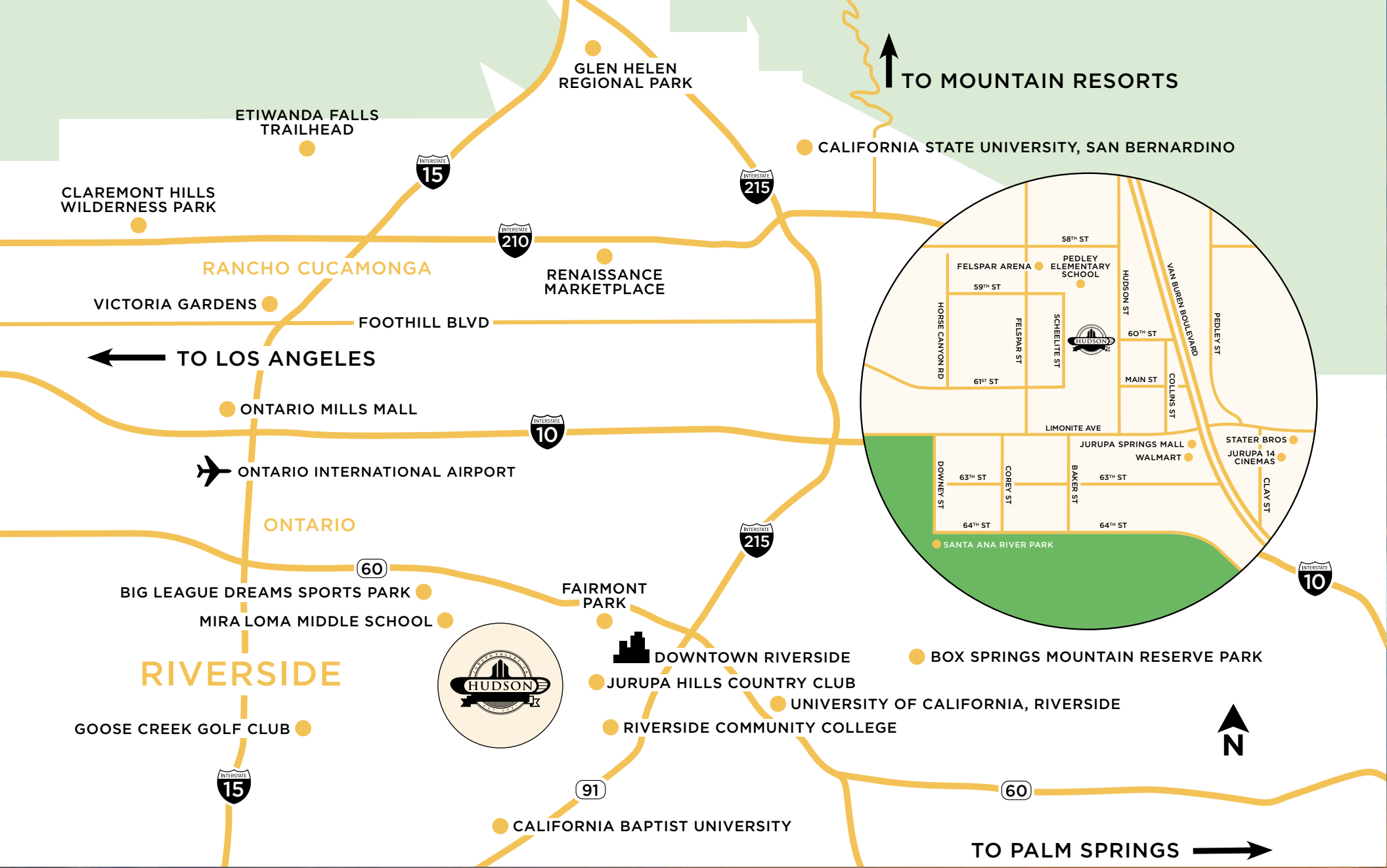
- Whirlpool stainless steel appliance package, including:
 - 30" gas (range)
 - Multi-cycle Energy Star dishwasher
 - Microwave oven with vented hood
- Food preparation and eat-in island (per plan)
- Single basin stainless steel sink, with chrome pull-out spout
- Granite slab countertops with 6" backsplash
- Pre-plumbed for refrigerator ice maker
- LED lighting throughout
- Insinkerator disposal

PRIMARY SUITE

The primary bedroom and bath have been designed with a perspective that goes beyond conventional floor plans to create a private suite that includes:

- Adult-height vanities
- Luxurious soaking tub and shower combo (per plan)
- Quality Sparkling Peerless Chrome Faucets
- Durable E-Stone countertops
- Spacious walk-in closet with shelf and pole





RCHobbs.com/Hudson-Collection
 Lontrice Dorton - 626.226.8046 - Lontrice@RCHobbs.com
 9031 BLACK THORN ST, JURUPA VALLEY CA 92509



In a continuous effort to improve its products, the seller reserves the right at its sole discretion to make changes or modifications to maps, plans, specifications, materials, features, options, amenities and colors without notice. All maps, plans, landscaping and elevation renderings are artist's conceptions and are not to scale. Hudson offers detached homes with an association supported by its residents that maintains the common areas and facilities for a monthly fee. Membership is automatic. Models do not reflect racial preference. Square footage listed is an estimate. Prices are subject to change without notice. CA DRE#02131080

