

Accessories

- Waterproof Cover
- Leg Support
- Multi Positional Base
- Sensory Rocker Base
- Activity Table
- Posture Wedge
- Head Rests
- Sensory Arms
- Seat Width Reducer*
- Seat Depth Reducer*
- Lap Belt
- Transport Base

* Allowing longevity of use



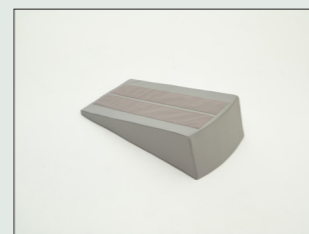
SEAT REDUCER



HEAD REST



WATERPROOF COVER



POSTURE WEDGE

Einstein Sizes

Einstein is available in four sizes to accommodate for all children from toddler to adulthood.

Product Number	2	2.5	3	3.5
User Height (cm)	90-110	111-130	131-150	151-170
Age Guide	2-5	5-9	9-12	12-16

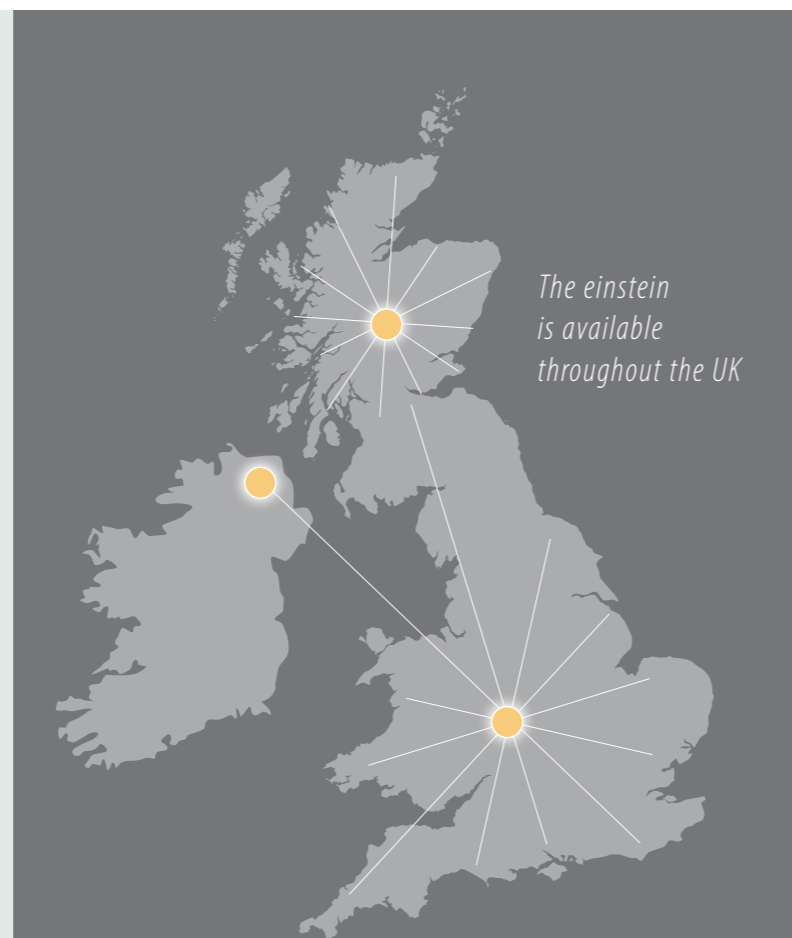
✓ DELIVERY, INSTALLATION AND TRAINING BY SPACESAVERBEDS

✓ HOME AND SCHOOL ASSESSMENTS ACROSS THE UK

✓ CE MARKED CLASS 1 MEDICAL DEVICE



Call us on 01905 347 538
info@spacesaverbeds.co.uk
www.spacesaverbeds.co.uk



The einstein is available throughout the UK

einstein

Gravity Chair



einstein

Gravity Chair



LEG SUPPORT

What is the Einstein and where is it used?

The Einstein is a gravity bearing support chair, designed to promote stability and postural support for children through to adulthood. The chair's low centre of gravity naturally encourages a stable seating position. It also provides a calming sensation due to the enclosed feel of sitting in the chair in a stable manner. It has a number of accessories that enable the perfect seating position to be adopted.

The Einstein is best used for individuals that require a seating position to support their trunk, especially those with postural and musculoskeletal instabilities. It can also be used by those individuals that require a calming seating space, such as those with autism or ADHD. It can be used in a home or school environment.



LAP BELT



HEAD SUPPORT CUSHION



SENSORY ARMS

Benefits of the Einstein

The Einstein features narrow lateral body guides, that help support various body sections (Such as the torso and limbs) in therapeutic positions. This provides relief for pain, reduces stress on joints, and can help prevent or treat conditions like contractures and spasms. The design also offers temporary pressure relief for specific body areas, which can be particularly beneficial during the postoperative recovery phase.

The support systems of the Einstein are beneficial for individuals with significantly reduced or absent trunk stability or severe trunk deformities, helping to (conditionally) correct, relieve, or support sitting or lying positions. The system's body-encompassing design provides support and positioning effects, such as pelvic stabilisation and lateral support for the pelvis and thorax. The Einstein helps compensate for severe body misalignments and postural instabilities. The goal is to enable sitting or lying in a physiologically correct posture without discomfort.



SHOWN WITH WOODEN SLEIGH BASE



Multi Positional Base

The Award Winning Patented sleigh base allows the users position in the Einstein to be adjusted whilst they are seated, by simply moving the product by holding the arms and gently sliding to the preferred position. The Einstein is a CE marked Class 1 Medical Device and is manufactured in Germany

SHOWN WITH
ACTIVITY TABLE

