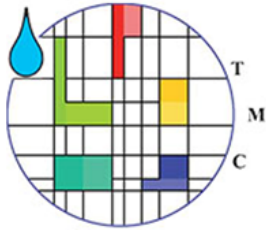


Terrazza TMC® Kit Manual



Terrazza MC® Innovators in **green**
cleaning technology

1. Maintenance and control of the brush

1.1. Checking the brush length

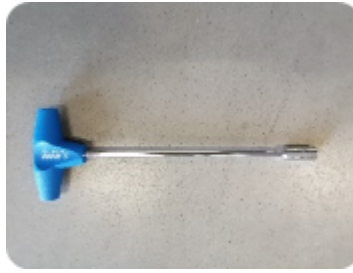
The green brush bristles should always be more than 1 cm longer than the white bristles. The perfect instrument to measure this is your own finger.



Image: Check the length of the green brush bristles compared to the white bristles

1.2. Raising the green brush

Step 1: Detach the block brush via the internal bolt with the supplied T-key (size 10).



Supplied T-key



Raising plates for elevating block brushes

Step 2: Place the intermediate plate under the green block brush.



Image: Placement of the intermediate plate under the green block brush

Step 3: Tighten the bolt. Pay attention to positioning! Ensure that the block brush and intermediate plate are mounted correctly to prevent damage.



Image: Correctly mounted brush with intermediate plate

2. Handy Wheels Installation

Step-by-step installation:

1. Use the bracket at the back of the device to attach the Handy Wheels.



Image: The bracket at the back of the device for Handy Wheels attachment

2. Place the Handy Wheels with the green marking downward on the bracket.



Image: Placement of the Handy Wheels with green marking downward

3. Ensure that the adjustment bar with holes is free and not rotated.



Image: The adjustment bar must be able to move freely and not be rotated

4. Slide the 2 clamps into the provided openings to secure the lower part.



Image: Placement of the clamps in the provided openings

5. Take the adjustment bar from number 3 and place the bolt through the green marking and through the provided opening at the top of the machine bracket.



Image: Placement of the bolt through the green marking

6. Secure the assembly. You are ready to use the Handy Wheels.

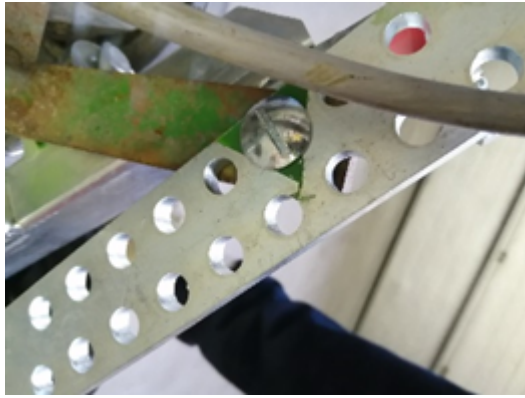



Image: The fully installed and secured Handy Wheels

3. Cleaning

 **Tip:** If this is your first time, practice with the cleaning device in the middle of a terrace or driveway. If possible, practice beforehand on a smooth surface.

3.1. Cleaning without the Handy Wheels

Startup



Image: Correct body posture during cleaning



Image: Incorrect work position with the machine

Important startup points:

- **Handle placement:** Place the machine handle at or below belt height (never higher!!)
- **Body posture:** Keep the device close to your body and hold the handle without applying pressure
- **Starting position:** Do not push the arm bracket up or down when starting. The correct height is where the handle remains without contact
- **Neutral zone:** Find the center point (the neutral zone)


Control: - If you do this perfectly, the device will remain stationary when starting and afterwards - If you now push the handle upward, the device will go to the right - If you

push lightly downward, the device will go to the left

Cleaning process

Working width and movement: - The right side is the side used to clean the edges - The right machine side will always work deepest in the joints - We clean over a width of approximately 1 meter - We go with the machine from left to right and vice versa - We do this 3 to 4 times over the same line (3 or 4 x 5 seconds per pass)

Working method: - Move and step backward during cleaning! - Continue doing this over a surface of 1m² to maintain overview - Now rinse this first m² thoroughly and check if all dirt is removed - Is everything clean? Repeat these actions on the parts still to be cleaned - If the surface is not clean, see next step "heavy soiling"

 **Tip:** Always start at the highest point and work toward the drain. This ensures that water can always flow away.

3.2. Cleaning with the Handy Wheels

Startup


Preparation: - Place the Handy Wheels on the machine with the green connection points - Adjust the height via the adjustment bar and bolt (also on the green attachment point, see Handy Wheels manual) - **Note:** set the adjustment bar so that the brush is always nicely horizontal (flat on the ground)

Body posture: - Place the machine handle at or below belt height (never higher!!) - Keep the device close to your body and hold the handle without applying pressure - Use the machine like a shopping cart. Simply steer the handle toward the direction you want to go with the machine

Cleaning process

Working width and movement: - The right side is the side used to clean the edges - The right machine side will always work deepest in the joints - We clean over a width of approximately 80 centimeters - We move with the machine from left to right and vice versa - We do this 3 to 4 times over the same line (3 or 4 x 5 seconds per pass)

Working method: - Move and step backward during cleaning! - Continue doing this over a surface of 1m² to maintain overview - Now rinse this first m² thoroughly and check if all dirt is removed - Is everything clean? Repeat these actions on the parts still to be cleaned - If the surface is not clean, see next step "heavy soiling"

 **Tip:** Always start at the highest point and work toward the drain. This ensures that water can always flow away.

3.3. For heavy soiling

Location	Method	Description
On the tiles	Sand as abrasive	Use sand as additional abrasive (not in combination with coating!)
In the joints	Steel block brush	Use the supplied steel block brush. Place the steel block brush on the mother brush

 **Info:** *If desired, both possibilities can be combined.*

Good luck with your Terrazza TMC® Kit!

For questions or support, contact your supplier.

© Terrazza MC - Innovators in green cleaning technology