



SWS 14528



SWS 14551



SWS 14550



SWS 14529



SWS 14548



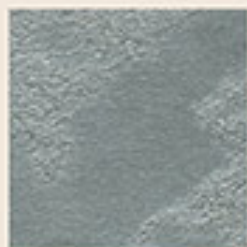
SWS 14559



SWS 14530



SWS 14542



SWS 14569



SWS 14531



SWS 14540



SWS 14570



SWS 14543



SWS 14541



SWS 14571

# Swahili



# Swahili



Rivestimento decorativo testurizzato per interni ad effetto metallizzato oro e argento

Applicare SWAHILI con pennello "spalter", in uno o due strati. Il prodotto può essere diluito con massimo 20% di acqua in funzione dell'effetto estetico desiderato. Resa: 6-7 m<sup>2</sup>/l. Per maggiori informazioni consultare la scheda tecnica.

Decorative textured interior trowel-on coating with gold and silver metallic patterns

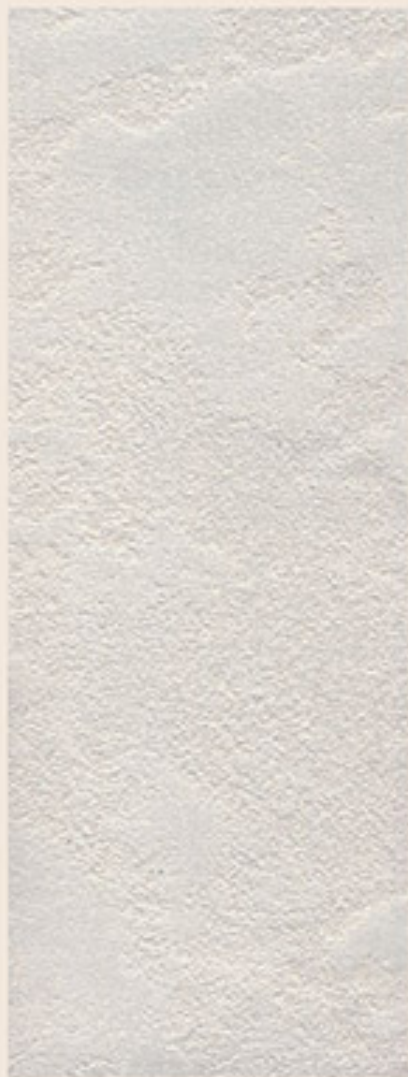
Apply SWAHILI with "spalter" brush, in one or two layers. The product can be diluted with maximum 20% of water according to the desired effect. Yield: 6-7 m<sup>2</sup>/l. For more information please check the technical data sheet.

Rivêtement décoratif texturé pour intérieurs à effet métallisé or et argent

Appliquez SWAHILI avec pinceau type "spalter" en une ou deux couches. Le produit peut être dilué avec 20% d'eau maximum, en fonction de l'effet esthétique désiré. Rendement: 6-7 m<sup>2</sup>/l. Pour plus d'informations consultez la fiche technique.

Texturierte dekorative Innenwandbeschichtung mit metallisiertem Gold und Silber Effekt

Eine oder zwei Schichten SWAHILI mit einem „spalter Pinsel“ auftragen mit maximal 20% Wasser verdünnen. Das Produkt kann je nach dem gewünschten ästhetischen Effekt mit bis zu 20% Wasser verdünnt werden. Ergiebigkeit: 6-7 m<sup>2</sup>/l. Für weitere Info bitte siehe technisches Merkblatt.



SWAHILI BASE SILVER

# Swahili



SWAHILI BASE GOLD

Le tessute qui s'applique, par conséquent à quelle de finition, sera indiquée. Per una corretta lettura dei colori si raccomanda di consultare questa cartella alla luce solare. Colors and patterns illustrated are for guidance only. The exact pattern, colors and shades may vary from those shown.



SWS 14503



SWS 14502



SWS 14501



SWS 14506



SWS 14505



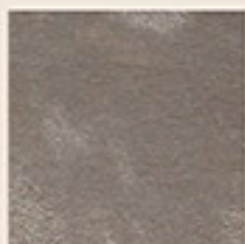
SWS 14500



SWS 14504



SWS 14504



SWS 14532



SWS 14505



SWS 14552



SWS 14533



SWS 14507



SWS 14553



SWS 14535

# Swahili





SWG 14700



SWG 14722



SWG 14721



SWG 14732



SWG 14733



SWG 14736



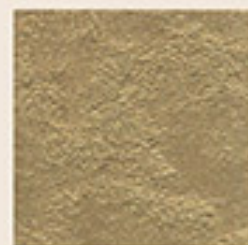
SWG 14701



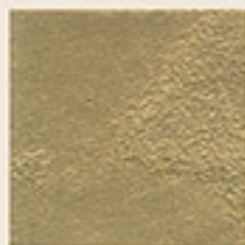
SWG 14720



SWG 14719



SWG 14710



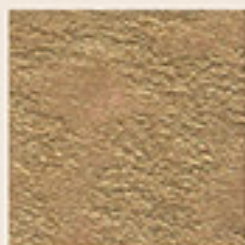
SWG 14731



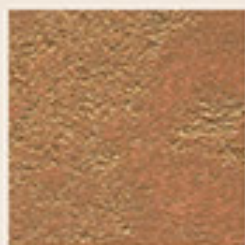
SWG 14726



SWG 14702



SWG 14706



SWG 14718



SWG 14708



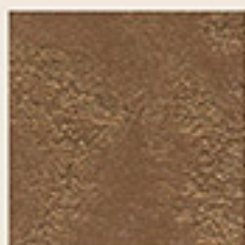
SWG 14729



SWG 14724



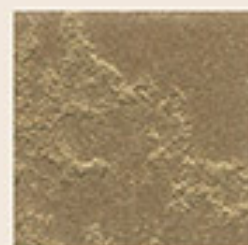
SWG 14703



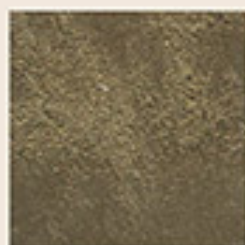
SWG 14704



SWG 14717



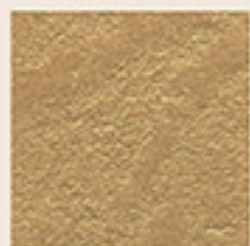
SWG 14709



SWG 14728



SWG 14725



SWG 14707



SWG 14705



SWG 14716



SWG 14711



SWG 14730



SWG 14727



SHANDUNG EFFECT - SWS 14602 s/n NONALUX E BIANCO



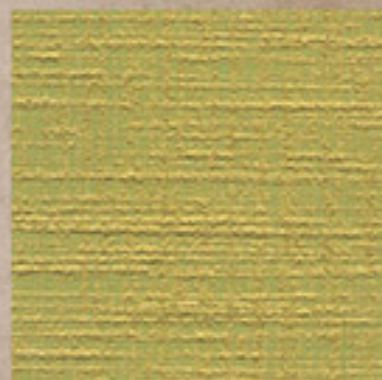
SWS 14603



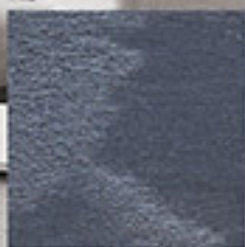
SWS 14609



SWS 14601



TARAN EFFECT - SWS 14607 s/n NONALUX E IP 4147



SWS 14604



SWS 14605



SWS 14606