

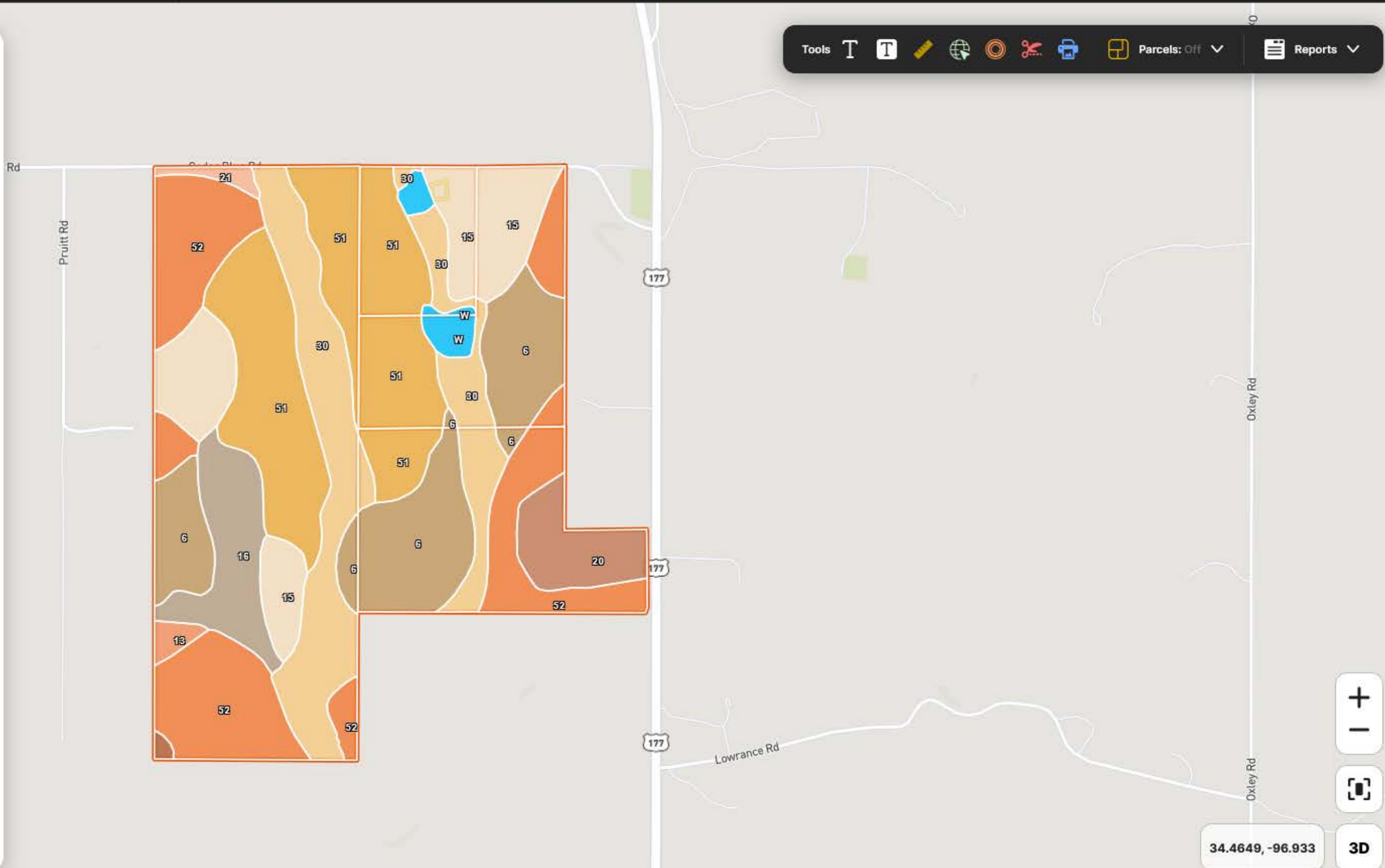
### Soil Report

All Polygons: 397.99 ac

Acres Capabilities WAPI

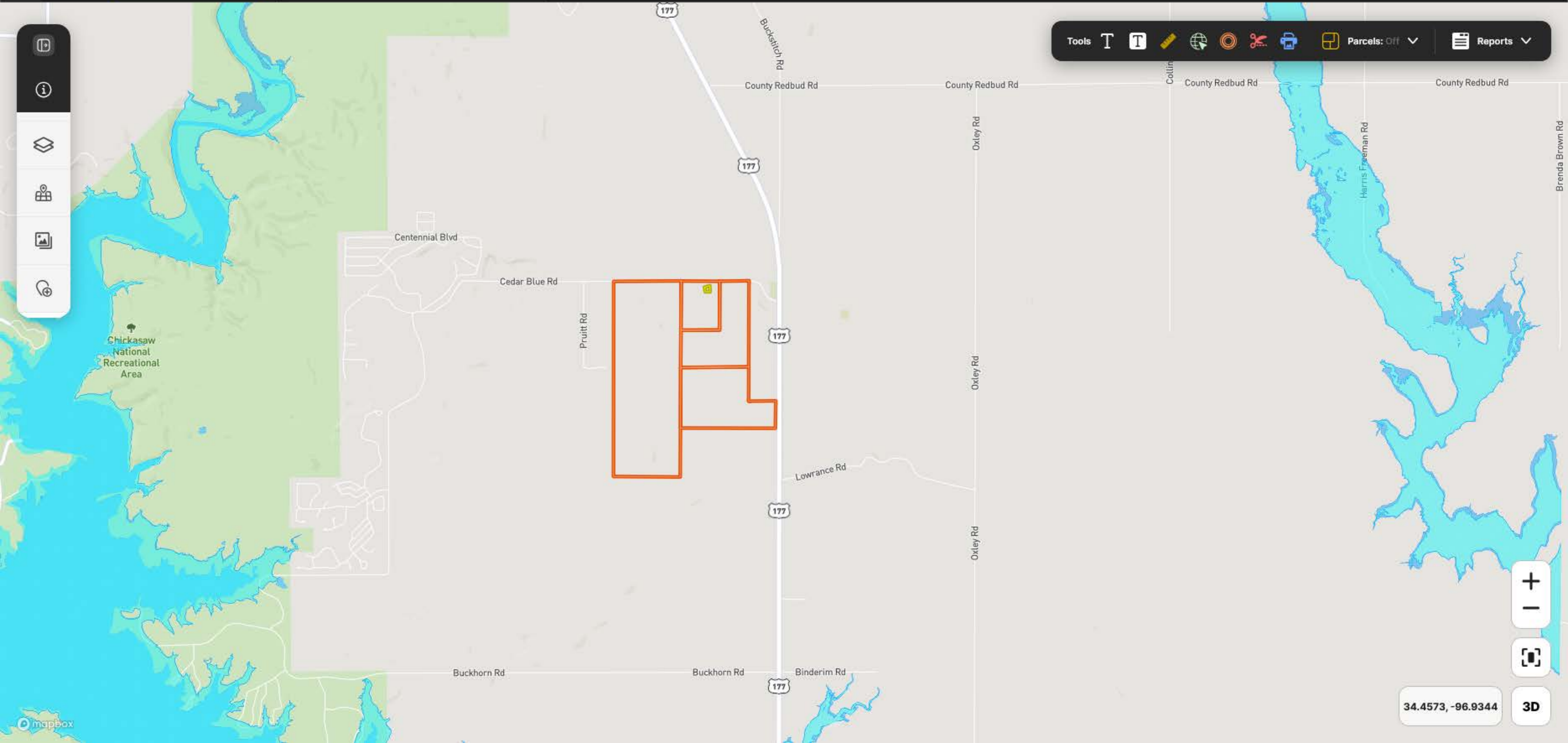
Code	Description	Acres	%	CPI	NCCPI	CAP
51	Shidler-Clarita complex, 3 to 8 percent slopes	93.68	23.54%	-	36	7s
52	Shidler-Rock outcrop complex, 3 to 8 percent slopes	79.81	20.05%	-	-	7s
30	Garvin and Elandco soils, 0 to 1 percent slopes, frequently flooded	67.51	16.96%	-	40	5w
6	Burleson clay, 1 to 3 percent slopes	61.21	15.38%	-	43	2s
15	Clarita clay, 3 to 5 percent slopes, moderately eroded	44.22	11.11%	-	59	3e
16	Clarita clay, 5 to 12 percent slopes, moderately eroded	23.54	5.91%	-	56	6e
20	Durant loam, 1 to 3 percent slopes	16.30	4.1%	-	53	3s
W	Water	6.09	1.53%	-	-	8

Print Delete



- 
- 
- 
- 
- 
- 

Tools Parcels: Off Reports



34.4573, -96.9344

3D

### Pruit Hwy 177 Ranch

Basemap Modern USGS

Overlays

#### My Items

- Labels (4)
- Boundary 1
- Boundary (4)

#### Image Gallery

Add images to showcase your property. Drag images here or click the button below

Add Images

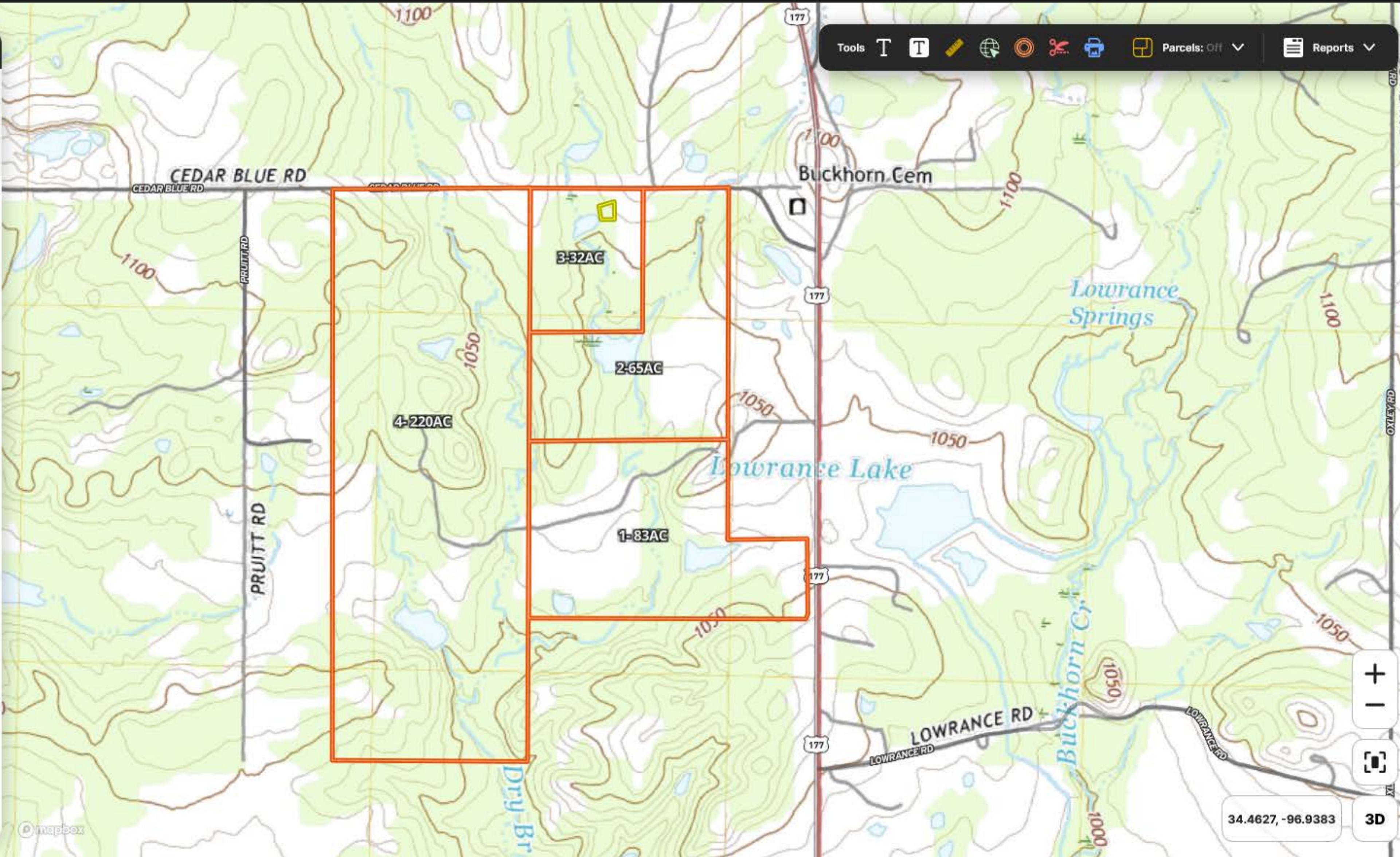
Import up to 10 Images at once | Maximum image file size: 20mb

#### Add Items

Item set: [Ranching](#)

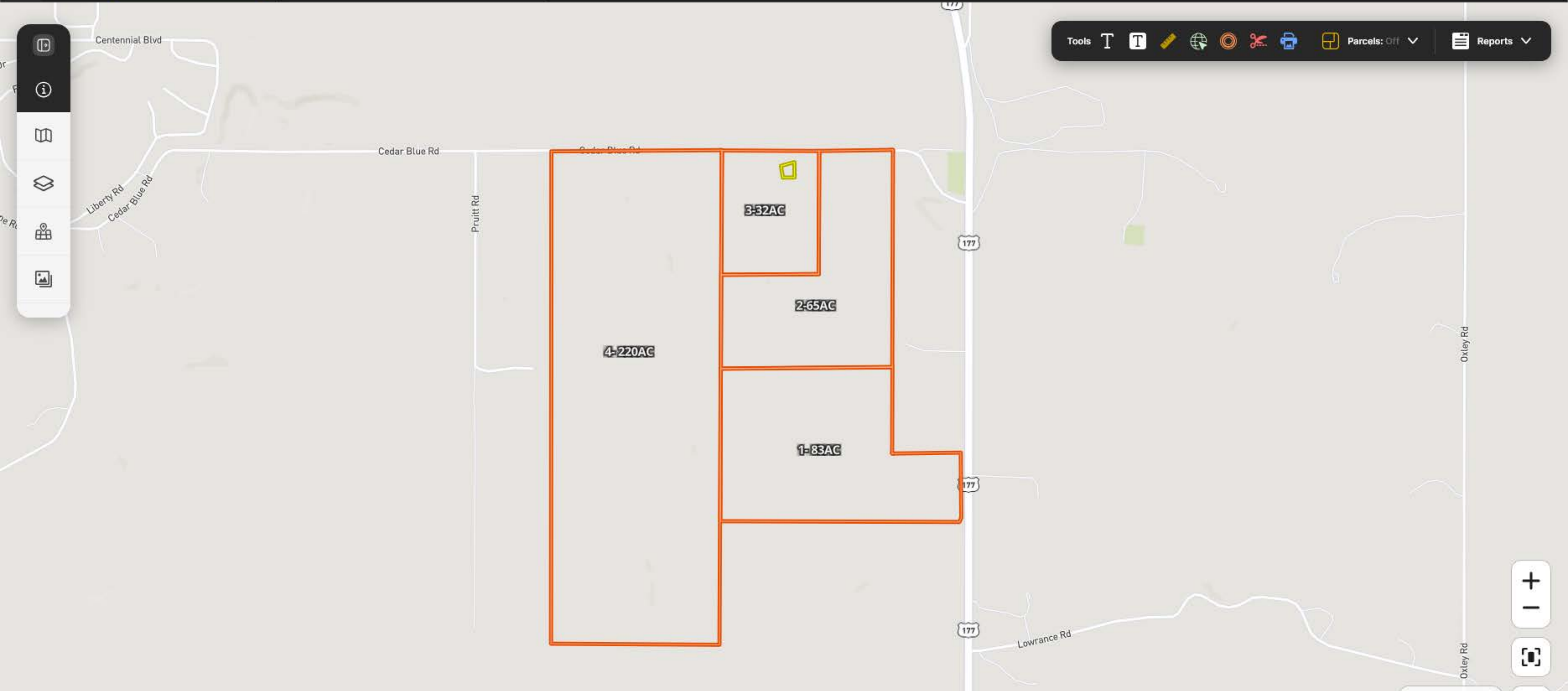
- All
- Points
- Lines
- Shapes

- Barn
- Cabin
- Blind
- Dump



Vertical sidebar with icons for map navigation and layers.

Tools menu with icons for text, measurement, pan, zoom, and other map functions.



Map navigation controls including zoom in (+), zoom out (-), and a location pin icon.

34.4577, -96.94 3D