

TACO CLASSICAL SERIES

2026/27 SEASON



RUTH REINHARDT
MUSIC DIRECTOR

SUBSCRIBE TODAY!

401.248.7000

TICKETS.RIPHIL.ORG/SUBSCRIBE

Bring your group & save!
401.248.7004 • amann@riphil.org

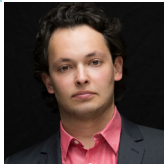


REINHARDT

OPENING WEEKEND: BEETHOVEN'S "PASTORAL"

Saturday, September 19, 2026 | 7:30pm

Ruth Reinhardt, conductor
Yevgeny Kutik, violin



KUTIK

BARBER: *The School for Scandal: Overture*
ERIC NATHAN: Violin Concerto
WORLD PREMIERE, RI PHIL COMMISSION
BEETHOVEN: Symphony No.6 (*Pastoral*)

BRAHMS & BEETHOVEN

Saturday, October 17, 2026 | 7:30pm

Ruth Reinhardt, conductor
Denis Kozhukhin, piano

PARRY: *Elegy for Brahms*
BRAHMS: Symphony No.3
BEETHOVEN: Piano Concerto No.5 (*Emperor*)



KOZHUKHIN

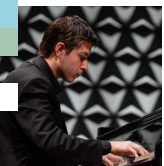


REIF

RIDE OF THE VALKYRIES!

Saturday, November 21, 2026 | 7:30pm

Christian Reif, conductor
Estefan Iatcekiw, piano



IATCEKIW

WAGNER: *Ride of the Valkyries*
Clara SCHUMANN: Piano Concerto
DVOŘÁK: *The Wood Dove*
RAVEL: *La Valse*

ROMANTIC CHOPIN

Saturday, January 23, 2027 | 7:30pm

Ruth Reinhardt, conductor
Alessio Bax, piano

R. STRAUSS: *Don Juan*
SHOSTAKOVICH: Symphony No.1
CHOPIN: Piano Concerto No.2

SIDE-BY-SIDE PERFORMANCE WITH STUDENTS FROM
THE RI PHILHARMONIC YOUTH ORCHESTRA

BAX



VASSILEVA

VALENTINE'S WEEKEND: TCHAIKOVSKY'S FIFTH

Saturday, February 13, 2027 | 7:30pm

Ruth Reinhardt, conductor
Vivi Vassileva, percussion

JOAN TOWER: *Fanfare for the Uncommon Woman*
JOHN CORIGLIANO: *Conjurer*
(Percussion Concerto)
TCHAIKOVSKY: Symphony No.5

NORTHERN LIGHTS - NIELSEN & SIBELIUS

Saturday, March 13, 2027 | 7:30pm

Benjamin Manis, conductor
Brannon Cho, cello

NIELSEN: *Helios: Overture*
TCHAIKOVSKY: *Variations on a Rococo Theme*
SIBELIUS: Symphony No.5



MANIS



CHO



SPANO

SPANO CONDUCTS PUCCINI

Saturday, April 10, 2027 | 7:30pm

Robert Spano, conductor
Lauren Carroll, soprano
Veronica Siebert, mezzo-soprano
Reed Gnepper, tenor
Thandolwethu Mamba, baritone

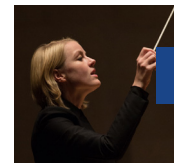
PUCCINI: *La Bohème*, Act III
LEONCAVALLO: Prologue from *Pagliacci*
ROSSINI: "Una voce poco fa" from *The Barber of Seville*
MASCAGNI: Intermezzo from *Cavalleria rusticana*
CILEA: "È la solita storia del pastore" from *L'Arlesiana*
VERDI: "È strano, è strano... Ah fors'è lui... Sempre libera" from *La traviata*
RESPIGHI: *Pines of Rome*

SEASON FINALE: RUTH CONDUCTS BEETHOVEN'S MISSA SOLEMNIS

Saturday, May 1, 2027 | 7:30pm

Ruth Reinhardt, conductor
Providence Singers, Christine Noel, Artistic Director
Katie Van Kooten, soprano

BEETHOVEN: *Missa Solemnis*



REINHARDT



PROVIDENCE SINGERS

ADD
ON

HANDEL'S MESSIAH

Sunday, December 13, 2026 | 3:00pm

Christine Noel, conductor
Providence Singers, Christine Noel, Artistic Director

The greatest story ever told. The most majestic music ever conceived. Handel's inspiring *Messiah* – an epic performance featuring the Providence Singers, Christine Noel, Artistic Director. Rejoice Greatly!



SPONSORED BY



All TACO Classical Series concerts are held on Saturdays
at 7:30pm at The VETS, Avenue of the Arts, Providence.

Artists and programs are subject to change.