

Standard Features

CONSTRUCTION STANDARDS & FEATURES GUIDE

QUALITY MATERIALS COME STANDARD

Thoughtfully selected products, energy-efficient systems, and durable construction are included throughout every Coval Home.

- ◆ 100% LED high-efficiency lighting
- ◆ 50-amp electric-vehicle charging circuit
- ◆ Moen plumbing fixtures
- ◆ Two-panel interior doors, painted-white
- ◆ Pine tongue-and-groove soffits in covered areas
- ◆ Heating and air conditioning included
- ◆ Milgard windows with lifetime warranty

Available features vary by plan. Please ask your Home Consultant for current specifications.

ENERGY SMART

Efficient lighting, HVAC

QUALITY BRANDS

Moen, Milgard, Kohler, Aristokraft, and more

BUILT TO LAST

Durable materials selected for Northwest living



Kitchen & Bathroom

- **Cabinetry:** Aristokraft staggered cabinets with crown molding, soft-close doors and drawers, dovetail drawer construction, and eight standard finishes
- **Kitchen island:** USB charger and outlet
- **Backsplash:** 6-inch subway tile in 4 color options
- **Countertops:** Multiple standard selections
- **Sinks:** Stainless steel
- **Showers:** 4- to 5-foot showers with glass-door enclosure
- **Bathtub:** White fiberglass tub/shower combination
- **Primary bathroom:** Double vanity *
- **Toilets:** Elongated, comfort-height
- **Mirrors:** Frames included

Doors, Millwork & Trim

- **Interior doors:** Two-panel, painted white
- **Trim:** Craftsman profile, painted white
- **Shelving:** Included in specified closets and pantries
- **Door hardware:** Satin finish

Interior Paint & Floor Covering

- **Paint:** Sherwin-Williams eggshell finish in 9 color options
- **Flooring:** Luxury vinyl plank in 6 color options
- **Carpet:** 6-lb. pad with 9 color options

Plumbing Features

- **Faucets:** Moen, satin finish
- **Water heater:** 50-gallon, Tier 4, high-efficiency hybrid *
- **Piping:** PEX Plastic
- **Kitchen:** Ice-maker provision
- **Hose bibs:** 2 exterior, frost-free

Lighting & Electrical

- **Lighting:** 100% LED high-efficiency
- **Light fixtures:** Satin-nickel finish
- Recessed LED can lights *
- **Electrical panel:** 200 amp
- **Large-home panel:** 320 amp in homes over 2,700 sq. ft.
- **Ventilation:** Panasonic whisper-quiet fans throughout
- **Exterior outlets:** 2 weatherproof
- **Interior outlets:** Combination USB/110V
- **EV charging:** 50-amp circuit
- **Electrical panel:** Solar-ready

Windows & Exterior Doors

- **Windows:** Milgard low-E, white vinyl, double-pane; U-factor 0.25
- **Sliding glass door:** Milgard *
- **Garage:** Access door and overhead door with top-panel windows
- **Front entry:** Codel fiberglass door with top window

COORDINATED CHOICES

Multiple colors and finish selections

TRUSTED PRODUCTS

Recognized brands throughout the home

MODERN CONVENIENCE

USB power, EV circuit, and solar-ready panel

* Available on most homes. Ask your Home Consultant for plan-specific details.

Foundation

- **Stem wall:** 3 feet
- **Crawl space:** Minimum 30 inches
- **Ground cover:** Black-poly vapor barrier over footing and up foundation wall
- **Garage slab:** 4 inches thick
- **Footings:** Minimum 12 inches x 6 inches

Floor System

- IBC-approved hung 11-7/8-inch I-joist floor system
- 23/32-inch tongue-and-groove floor sheathing, glued and nailed

Framing

- Vaulted ceilings *
- **Garage walls:** 2x6 studs at 16 inches on center
- **Interior walls:** 2x4 studs at 16 inches on center
- **Exterior walls:** 2x6 studs at 16 inches on center

Insulation

- BIBS blown-in-blanket insulation
- **Exterior walls:** R-21
- **Attic:** R-49
- **Garage walls and ceiling:** R-19
- **Floors:** R-38
- Super foam and seal

Wall Covering

- **Drywall:** Light orange-peel finish
- PVA primer applied as a vapor barrier
- **Garage:** Sheetrocked, insulated, and fire-taped
- **Garage lighting:** LED

Exterior Siding & Trim

- **Weather barrier:** Tyvek moisture-barrier house wrap
- **Siding:** James Hardie plank on the entire exterior
- **Gables:** 8-inch bargeboard with 1 x 4 trim
- **Fascia:** 5/4 x 6-inch white wood
- **Covered outdoor areas:** Pine tongue-and-groove soffit
- **Gutters:** White aluminum gutters and downspouts

Roofing

- **Roof:** 50-year architectural Class B
- **Trusses:** Engineered at 24 inches on center
- **Gable overhang:** 12-inch plywood
- **Eave overhang:** 16 inches
- **Standard roof pitch:** 5/12
- **Roof sheathing:** 7/16 inch

Interior Climate & Efficiency

- **Heat pump:** High-efficiency electric ductless, 11 HSPF *
- **ADUs:** Mini-split system
- Heating and air conditioning included
- Smart thermostat *
- **Whole-house ventilation:** Quiet fan, 50/80/100 CFM
- **Energy rating:** HERS certification available on request*

DURABLE CONSTRUCTION

Engineered framing and quality exterior materials

ENERGY PERFORMANCE

Insulation, efficient systems, and HERS certification

NORTHWEST READY

Assemblies selected for regional weather and comfort

* Available on most homes. Ask your Home Consultant for plan-specific details.

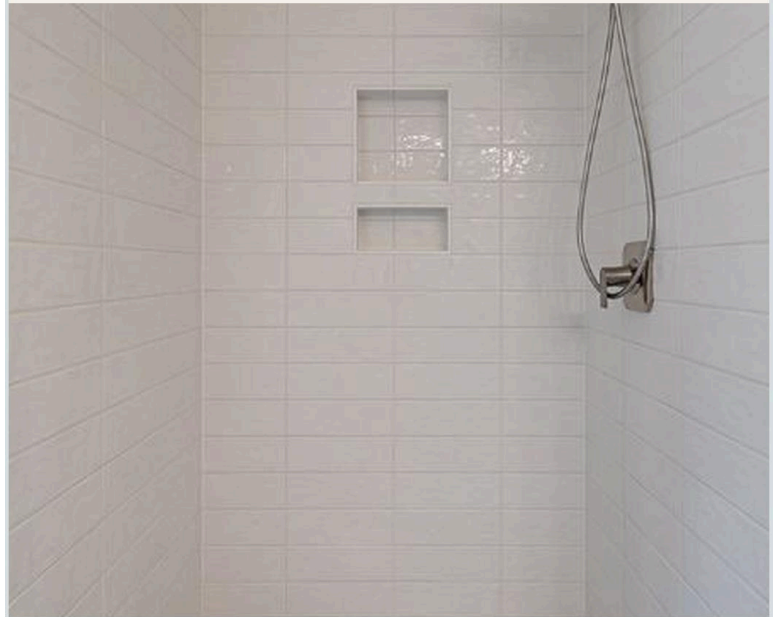
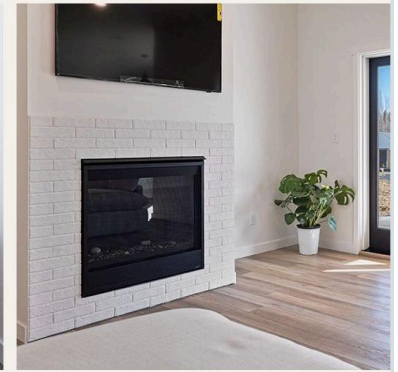
Popular Upgrade Options

PERSONALIZE YOUR HOME AROUND THE WAY YOU LIVE

COVAL
H O M E S

Choose from finish, comfort, and architectural upgrades to create a home that feels distinctly yours.

- Quartz and granite countertops
- 9-foot ceilings
- Walk-in tubs
- Double-oven cabinets
- Additional cabinetry
- 8- and 12-foot sliding glass doors
- 7/12 roof pitch
- Custom tile showers
- Black and bronze hardware finishes
- Extended outdoor living spaces
- Electric and gas fireplaces
- French and barn doors
- Black window packages
- Timber-framed porches
- Farmhouse sinks
- Board-and-batten siding
- Stone veneer siding
- Heated tile floors
- Custom hood vents
- Hemlock and alder door packages



MAKE IT YOURS

Upgrade availability and pricing vary by plan, region, and project. Visit COVALHOMES.COM or speak with your Home Consultant.