

# AUSTRALIA'S TOUGHEST TYRES MICKEY THOMPSON

BE A PART OF THE LEGEND

MICKEY THOMPSON

**M/T**

LEGENDARY OFF-ROAD TYRES

# BAJA BOSS M/T

## PREMIUM EXTREME MUD-TERRAIN

# MEET THE WORLD'S TOUGHEST MUD TERRAIN TYRE

	TYRE SIZE	LOAD INDEX	OD (MM)	TREAD DEPTH
15"	LT 33X12.5R15	108Q	831	16.7mm
	LT 35X12.5R15	113Q	878	16.7mm
16"	LT 285/75R16	126Q	838	15.1mm
	LT 315X75R16	127Q	877	16.3mm
17"	LT 33X12.5R17	114Q	838	16.7mm
	LT 35X12.5R17	119Q	883	16.7mm
	LT 37X12.5R17	124Q	934	17.5mm
	LT 305/65R17	121Q	830	16.7mm
	LT 285/70R17	121Q	839	15.1mm
18"	LT 315/70R17	121Q	878	16.7mm
	LT 33X12.5R18	118Q	830	16.7mm
	LT 35X12.5R18	118Q	883	16.7mm
	LT 305/60R18	126Q	830	16.7mm
20"	LT 285/65R18	125Q	848	15.1mm
	LT 35X12.5R20	125Q	881	16.7mm
	LT 285/55R20	122Q	828	14.7mm

## TYRE FEATURES



### ASYMMETRIC TREAD

Optimised for reducing noise, off-road traction, and on-road handling



### 4 PITCH SIDEBITERS

Increase off-road traction and reduce the chances of sidewall damage



### POWERPLY XD

Adds heavier denier cord to the third ply, providing better puncture resistance, quicker steering response & stability



### T4 SILICA REINFORCED COMPOUND

Provides excellent wet handling/braking performance, cut and chip resistance, and lasting treadlife



### STONE EJECTOR RIBS

Prevent gravel from being wedged into tread grooves



**10%** ROAD & SAND **90%** DIRT & MUD

## PREMIUM EXTREME MUD-TERRAIN

The Baja Boss M/T by Mickey Thompson is a top-tier mud terrain tyre with an advanced asymmetrical tread for reduced noise, excellent off-road traction, and on-road control. It features extreme Sidebiters for protection, a Powerply XD 3-Ply construction for sidewall strength, and a silica-reinforced compound for durability.



BAJA BOSS M/T

# BAJA BOSS A/T

## PREMIUM HYBRID ALL-TERRAIN

	TYRE SIZE	LOAD INDEX	OD (MM)	TREAD DEPTH
16"	LT 265/75R16	123Q	812	14.7mm
	LT 285/75R16	126Q	835	14.7mm
17"	LT 33X12.5R17	114Q	834	14.7mm
	LT 35X12.5R17	119Q	876	14.7mm
	LT 37X12.5R17	124Q	931	14.7mm
	LT 265/65R17	121Q	775	14.7mm
	LT 305/65R17	121Q	834	14.7mm
	LT 265/70R17	121Q	809	14.7mm
	LT 285/70R17	121Q	838	14.7mm
	LT 295/70R17	121Q	856	14.7mm
18"	LT 315/70R17	111Q	876	14.7mm
	LT 255/85R17	111Q	878	14.7mm
	LT 33X12.5R18	118Q	827	14.7mm
	LT 35X12.5R18	118Q	878	14.7mm
	LT 265/60R18	119Q	781	14.7mm
	LT 305/60R18	126Q	827	14.7mm
	LT 265/65R18	116Q	801	12.7mm
	LT 285/65R18	125Q	842	14.7mm
20"	LT 275/70R18	125Q	849	14.7mm
	LT 295/70R18	129Q	877	14.7mm
	LT 305/70R18	126Q	896	14.7mm
	LT 35X12.5R20	125Q	881	14.7mm
	LT 37X12.5R20	126Q	932	14.7mm
	LT 275/55R20	120Q	818	14.7mm
	LT 285/55R20	122Q	830	14.7mm
	LT 305/55R20	125Q	856	14.7mm
	LT 275/60R20	123Q	849	14.7mm
	LT 285/60R20	125Q	854	14.7mm
LT 295/60R20	126Q	870	14.7mm	
LT 275/65R20	126Q	877	14.7mm	
LT 285/65R20	127Q	878	14.7mm	

# MICKEY THOMPSON'S MOST INNOVATIVE HYBRID A/T TO DATE

## TYRE FEATURES



### T1 COMPOUND

Provides excellent wet handling/braking, lasting tread life, and wet weather traction



### POWERPLY XD

Adds heavier denier cord to the angled third ply, providing improved puncture resistance, quicker steering response, and greater stability



### EXTREME SIDEBITERS

150% Deeper than the Baja Legend EXP for a bold look and extreme off-road traction/protection



### ASYMMETRIC TREAD

Optimised for reduced noise, off-road traction, and on-road handling



### THREE-PEAK MOUNTAIN SNOW-FLAKE DESIGN

On all sizes 12.5 (315) and narrower



## EXTREME SIDEBITERS

150% DEEPER SIDEBITERS THAN THE BAJA ATZP3 FOR A BOLD LOOK, EXTREME OFF-ROAD TRACTION AND PROTECTION



**60%** ROAD & SAND **40%** DIRT & MUD



BAJA BOSS A/T

# BAJA LEGEND EXP

HYBRID ALL-TERRAIN

# PROOF THAT LEGENDS NEVER DIE

	TYRE SIZE	LOAD INDEX	OD (MM)	TREAD DEPTH
15"	LT 31X10.5R15	109Q	781	14.7mm
	LT 33X12.5R15	108Q	836	14.7mm
16"	LT 245/70R16	118Q	757	14.7mm
	LT 265/70R16	121Q	784	14.7mm
	LT 305/70R16	124Q	840	14.7mm
	LT 265/75R16	123Q	810	14.7mm
	LT 285/75R16	126Q	838	14.7mm
	LT 315/75R16	127Q	883	14.7mm
17"	LT 265/65R17	120Q	782	14.7mm
	LT 305/65R17	121Q	835	14.7mm
	LT 265/70R17	121Q	810	14.7mm
	LT 275/70R17	121Q	826	14.7mm
	LT 285/70R17	121Q	840	14.7mm
	LT 295/70R17	121Q	853	14.7mm
18"	LT 35X12.5R18	118Q	875	14.7mm
	LT 265/60R18	119Q	775	14.7mm
	LT 305/60R18	126Q	825	14.7mm
	LT 275/65R18	123Q	821	14.7mm
	LT 285/65R18	125Q	839	14.7mm
	LT 265/70R18	124Q	835	14.7mm
	LT 295/70R18	129Q	874	14.7mm
20"	LT 275/55R20	120Q	821	14.7mm
	LT 285/55R20	122Q	828	14.7mm
	LT 275/60R20	123Q	836	14.7mm
	LT 275/65R20	126Q	880	14.7mm

## TRUSTED TYRES THAT REMAIN AHEAD OF THE COMPETITION



**60%** ROAD & SAND **40%** DIRT & MUD

The Baja Legend EXP hybrid all-terrain was developed with a blend of premium materials and legendary design to provide a balance of on-road performance and off-road traction. Featuring legendary Mickey Thompson Sidebiters, large surface area tread elements and wide voids provide the ultimate on-road and trail performance. T4 silica-reinforced compound provides excellent wet handling, durability, and tread life.

## TYRE FEATURES



### LEGENDARY BAJA INSPIRED TREAD

Large surface area tread elements with wide voids for an aggressive appearance, and great on/off-road performance



### T4 SILICA-REINFORCED COMPOUND

Provides excellent wet handling/braking performance, cut and chip resistance, and lasting treadlife



### NEXT-GEN LIGHTWEIGHT HIGH-TENSILE BODY PLYS

High-tensile keeps the same weight but adds 20% to sidewall strength and resistance to damage.



### OPTIMISED TREAD DESIGN AND GEOMETRY

Helps to reduce noise



**FEED THE BEAST WE CALL ADVENTURE**  
WITH TYRES BACKED BY DECADES OF RACING HERITAGE



LEGEND EXP

# BAJA LEGEND MTZ

## MUD TERRAIN

# DEFY LIMITS

	TYRE SIZE	LOAD INDEX	OD (MM)	TREAD DEPTH
15"	LT 31X10.5R15	109Q	781	14.7mm
	LT 33X12.5R15	108Q	836	14.7mm
	LT 31X10.5R15	109Q	781	14.7mm
	LT 33X12.5R15	108Q	836	14.7mm
16"	LT 245/70R16	118Q	757	14.7mm
	LT 265/70R16	121Q	784	14.7mm
	LT 305/70R16	124Q	840	14.7mm
	LT 265/75R16	123Q	810	14.7mm
17"	LT 265/65R17	120Q	782	14.7mm
	LT 305/65R17	121Q	835	14.7mm
	LT 265/70R17	121Q	810	14.7mm
	LT 275/70R17	121Q	826	14.7mm
	LT 285/70R17	121Q	840	14.7mm
18"	LT 35X12.5R18	118Q	875	14.7mm
	LT 265/60R18	119Q	775	14.7mm
	LT 305/60R18	126Q	825	14.7mm



## TYRE FEATURES



**POWERPLY 3-PLY SIDE WALL CONSTRUCTION**  
Provides increased puncture resistance and more responsive handling



**VARIABLE LENGTH & DEPTH FOUR-PITCH SIDEBITERS**  
Provides off-road traction and grip



**T4 SILICA-REINFORCED COMPOUND**  
Designed to provide excellent wet handling/braking performance, cut and chip resistance, and lasting treadlife



**BOLD & PROVEN MTZ TREAD**  
For an aggressive appearance and great on/off-road performance



**OPTIMISED TREAD DESIGN AND GEOMETRY**  
Helps to reduce noise



## BAJA LEGEND MTZ™: LEGENDARY TRACTION ON & OFF THE ROAD

The Baja Legend MTZ™ features an innovative design to deliver versatile mud terrain performance, providing excellent traction both on and off-road. Mickey Thompson's legendary Sidebiter® design elements and Powerply™ 3-Ply sidewall construction provide off-road performance, quick steering response, and stability while its T4 silica-reinforced compound fortifies on-road tread wear, wet performance, and treadwear durability.



LEGEND MTZ

# TECHNOLOGY. TESTED. PROVEN.

# FAST RESPONSE CONSTRUCTION

## T TREAD



OPTIMIZED TREAD DESIGN & GEOMETRY



EXTREME SIDEBITERS



ASYMMETRICAL TREAD



MUD SCOOPS



BAJA PROVEN TREAD STYLING



STONE EJECTOR RIBS

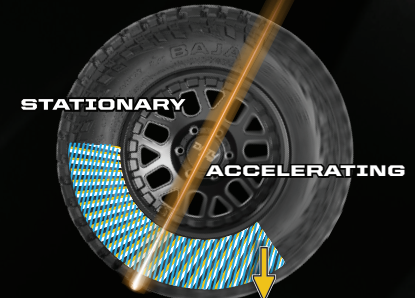
## T.C.C TREAD CARCASS COMPOUND

### TRADITIONAL RADIAL CONSTRUCTION 2 OR 3 BODY PLY



High Torque Twist

### MICKEY THOMPSON POWERPLY



Reduced Radial Torque Twist

POWERPLY improves cornering, steering response, and gets power to the ground faster. In cornering, the denier plies twist far less which means less tread squirm, giving you greater traction and faster response. Put simply, the tyre handles better and is safer than competitor tyres.

## C CARCASS



### POWERPLY

#### 3-PLY SIDEWALL CONSTRUCTION

The additional denier cord, combined at an angle, reduces softer rubber gaps between sidewall cords, improves tear resistance, and when coming out of a turn it returns steering to centre faster than traditional radial construction, resulting in less chance of losing control of your vehicle.



### POWERPLY XD

#### 10% STRONGER DENIER CORD

Powerply XD adds heavier denier cord to the angled third ply providing better puncture resistance, quicker steering response, and greater stability (LT-Sizes Only)

## C COMPOUND

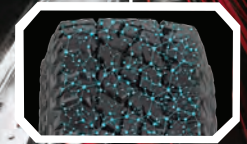


### T4 SILICA-COMPOUND

#### T4 SILICA-REINFORCED COMPOUND

Innovations in compound technology go way beyond grip. Modern compounds adapt to conditions and, together with the carcass, conform to the driving surface and limit rebound.

Mickey's high Silica Compound, which is chemically bonded to the rubber, results in a highly malleable, flexible tyre with immense cut and chip resistance, and good mileage.



TECHNOLOGY

# RACING LEGEND. INNOVATOR.

Mickey Thompson's legendary drive to win races in record time pushed him to innovate in tyre design. If a tyre held him back, he'd tweak it to ensure he crossed the finish line first.

An innovator in many fields, Thompson invented the "Christmas Tree" starting light systems for dragstrips, the wide oval tyre, nitrogen gas shocks in the U.S., and the Hydro-Barricade, a water safety wall for race tracks and highways.



**BIG ENGINES IN OFF-ROAD BUGGIES** Mickey became famous for putting big engines in off-road buggies. This is his rear-engine buggy powered by a V8 Chevy.



**FIRST TO CREATE SIDEBITERS** In 1977 Mickey Thompson pioneered tread-on-the-sidewall "Sidebiter" technology.



**THE LEGEND LIVES ON** Mickey Thompson succeeded through persistence, building record-setting cars for street races, dragstrips, and events like Bonneville, Indianapolis, Pan Am, and Baja.



**RACING UP THE STADIUM STEPS** Mickey shocked the off-road racing world by announcing he would host a race in a stadium. He did just that at the Los Angeles Coliseum in 1979, in front of 40,000 cheering fans.



**CALL HIM "MR.SPEED."** Mickey Thompson holds more speed and endurance records than anyone, with 295 set at Bonneville. He was also the first American to break the 400 mph barrier.



**WINNING THE BAJA 1000** Champion at Kresno in 1982, Mickey won the Baja 1000, setting a new record of 19 hours, 40 minutes, and 23 seconds.

**FASTEST MAN ON EARTH** Mickey set a new speed record of 406.6mph

1960

**MICKEY GOES BIG** Mickey developed a tall Light Truck 35" O.D. tyre

1973

**WINNING BAJA 1000** Mickey set a new speed record of 19 hrs, 40 mins & 23 secs

1982

**MOTORSPORTS HALL OF FAME** Earned by Mickey's contribution to motorsports

1990

**23° ANGLED TREAD** The Baja CLAW TTC tyre was redeveloped with directional tread

1998

**WORLD'S 1ST TYRE WITH DIRECTIONAL SIDEBITERS** The Baja CLAW TTC

2009

**BAJA BOSS M/T BAJA PRO X POWERPLY XD LAND SPEED RECORD** Danny Thompson sets new record of 448.757 mph at Bonneville

2018

**BAJA BOSS A/T** Mickey Thompson's best all-terrain to date

2021

**BOSS XS** A new extreme competition tyre is introduced to the world

2023

1963

**MICKEY THOMPSON TIRES WAS FOUNDED**

1977

**SIDEBITERS** Mickey developed sidewall tread to enhance off-road performance

1987

**QUIET ON AND OFF ROAD** Mickey Thompson developed the Bias Belted Carcass

1994

**INTRODUCED 17" 4X4 TIRES AND WHEELS** 17" Off-Road Racing Tyres and Wheels

2005

**POWERPLY** Third Angle Ply Carcass Construction was developed

2013

**REVOLUTIONARY NEW ATZ P3** A hybrid, new breed of all-terrain tyre is born (today's BOSS A/T)

2020

**BAJA PRO XS** New super traction and super strength tyre for the true enthusiast

2022

**A LEGEND IS BORN** Introduction of Legend EXP and Legend MTZ



HISTORY

# HARDCORE COMPETITION

OFF-ROAD RACING AND ROCK CRAWLING

## BAJA BOSS X

### COMPETITION PROVEN EXTREME TERRAIN TYRE

Packed with off-road features to handle tough conditions like rock crawling, mud, snow, sand, dirt, and gravel. It has a Sticky Competition Compound for unbeatable traction, large Sidebiters for extra grip, Powerply XD for better puncture resistance, quicker steering, and added stability, plus Stone Ejector Ribs to keep gravel out of the tread grooves. Not for on-road use.



## BAJA BOSS XS

### PERFORMANCE MUD-TERRAIN

The Baja Boss XS combines the game-changing technology of the 2019 Baja Boss M/T with the durability of the Baja Boss X. It features extreme SideBiters and a silica-reinforced compound, plus 4-ply PowerPly PRO sidewall technology for superior traction in rock crawling, desert racing, and short course racing.



## BAJA PRO XS

### WORLD'S TALLEST D.O.T. APPROVED LIGHT TRUCK TYRE

The BAJA PRO XS is perfect for rock crawling, mudding, and making a statement. As the tallest D.O.T.-approved LT tire, it features durable four-ply nylon sidewalls, flexible Dual Decoupling Grooves, mud scoops, large Sidebiters, angled shoulder scallops, and a symmetric tread for enhanced traction and cleaning power.



**MICKEY THOMPSON**  
**M/T**  
**LEGENDARY OFF-ROAD TIRES**

YOUR NEAREST AUTHORISED MICKEY THOMPSON STOCKIST IS:

IMPORTED & DISTRIBUTED BY:

